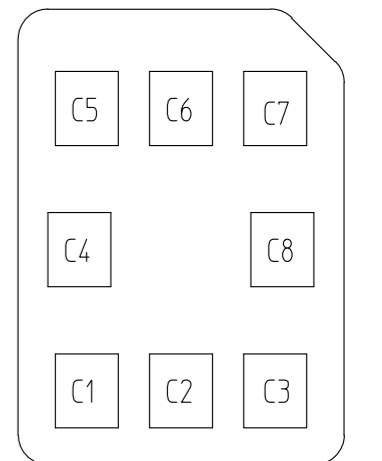
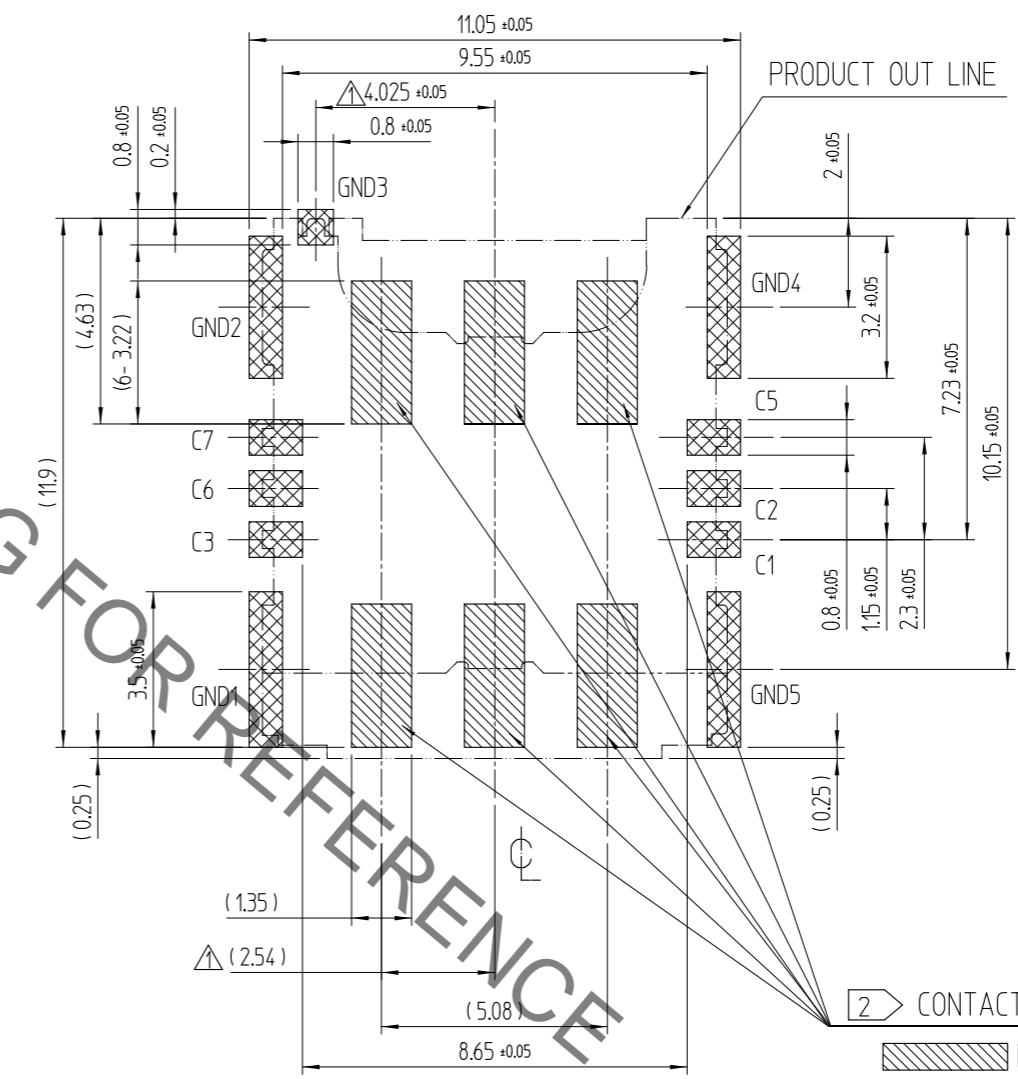
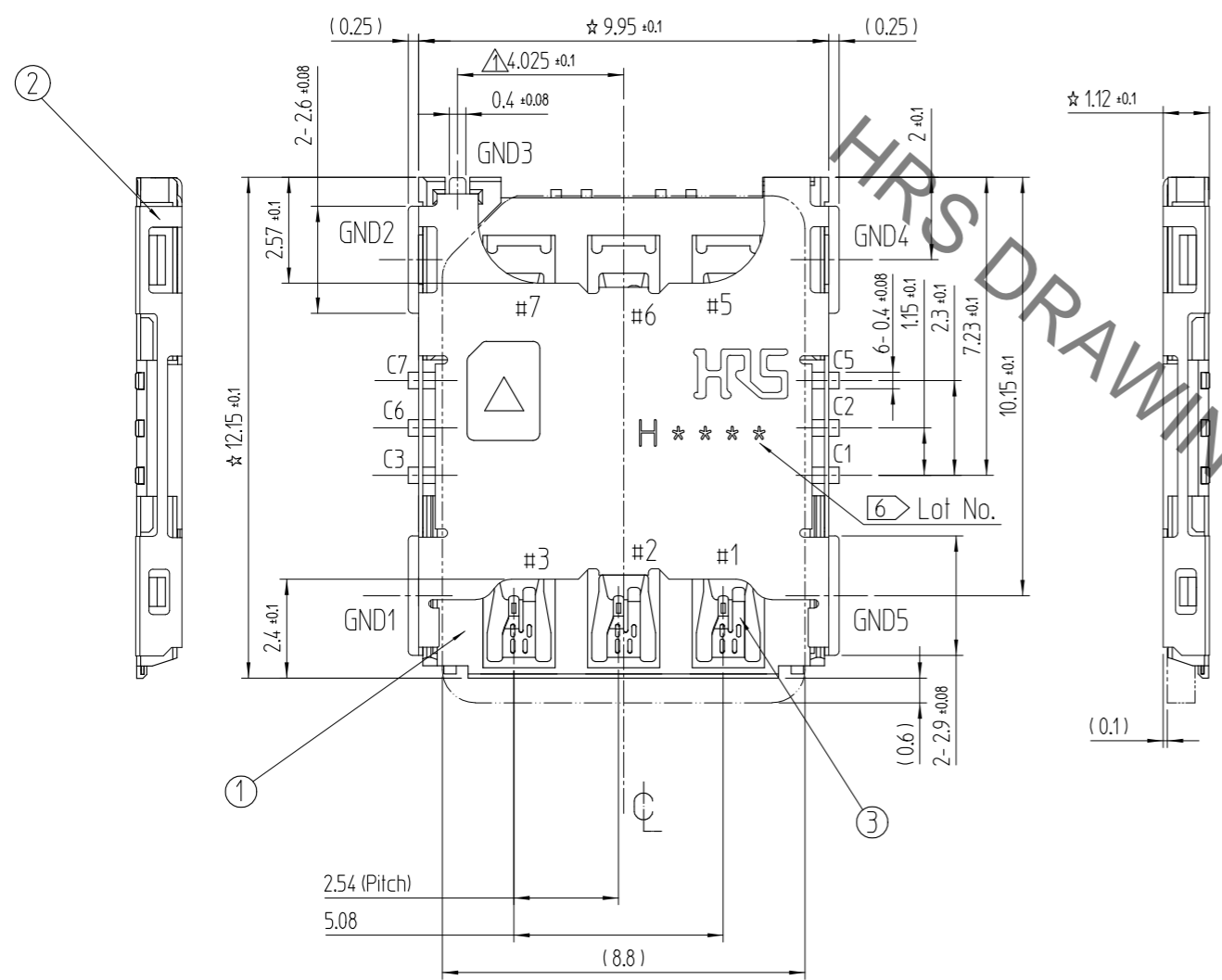


Aug.1.2020 Copyright 2020 HIROSE ELECTRIC CO., LTD. All Rights Reserved.  
In case of consideration for using Automotive equipment / device which demand high reliability, kindly contact our sales window correspondents.

△數 COUNT	訂正事項 DISCRIPTION OF REVISIONS	擔當 B Y	檢圖 CHKD	年月日 DATE	△數 COUNT	訂正事項 DISCRIPTION OF REVISIONS	擔當 B Y	檢圖 CHKD	年月日 DATE
7	RE-5-1589	N.J.W	A.B.H	17. 02. 27					

- △ 1. CO-PLANRITY SHALL BE 0.1mm MAX (BEFORE & AFTER REFLOW)
- ② NO PATTERNS PERMITTED IN THIS OBLIQUE - HATCHED AREA
- ③ SOLDER AREA - CROSS HATCHED AREA
- 4 PRODUCT SHALL NOT EXPOSE FROM THE PCB



NANO SIM CARD PAD LAY OUT

PIN No.	Name
C1	Vcc
C2	RST
C3	CLK
C5	GND
C6	Vpp
C7	I/O

NANO SIM CARD ASSIGNMENT

RECOMMEND PCB PATTERN LAYOUT (TOLERANCE :  $\pm 0.05$ )  
RECOMMEND METAL MASK THICKNESS = 0.12mm

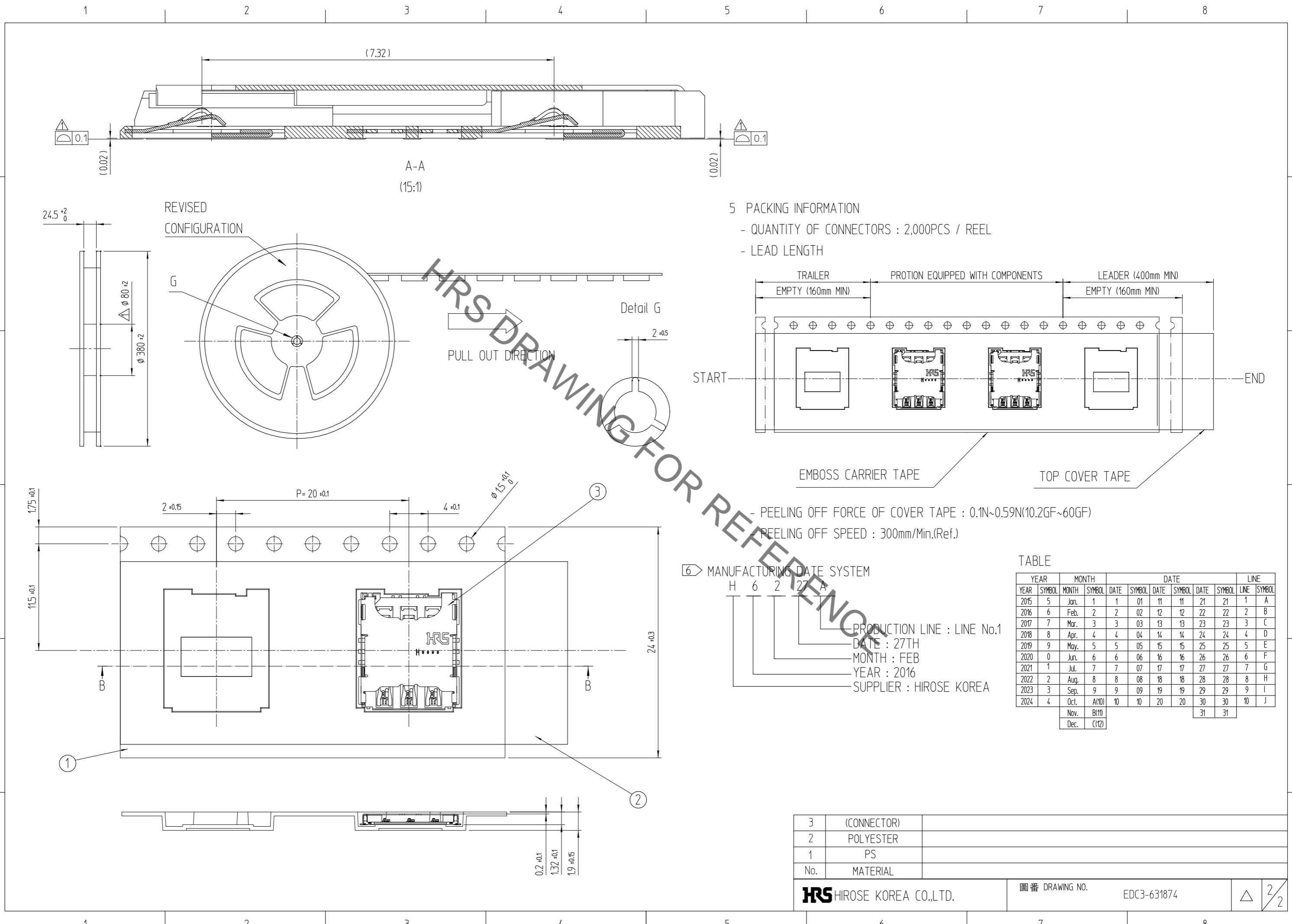
DRAWING FOR REFERENCE  
This is subject to change without notice

2	STAINLESS STEEL	MOUNTING AREA Au over Ni	3	COPPER ALLOY	CONTACT AREA Au over Pd-Ni over Ni
1	LCP	BLACK UL94-V0			MOUNTING AREA Au over Ni
NO.	MATERIAL	FINISH,REMARKS	NO.	MATERIAL	FINISH,REMARKS

CODE NO. (OLD)	DRAWN	DESIGNED	CHECKED	APPROVED	RELEASED
	M.J.CHEON 15.02.04	M.J.CHEON 15.02.04	J.H.CHOI 15.02.04	H.C.SONG 15.02.04	ENG 17.02.28 DEPT

 SCALE 5:1 UNITS mm	DRAWING NO. EDC3-631874  <b>HRS</b> HIROSE KOREA CO.,LTD.	PART NO. KP13C-6S-SF(800)  CODE NO. 6530-0007-2-800	<table border="1"> <tr> <td>1</td> <td>2</td> </tr> </table>	1	2
1	2				

Aug.1.2020 Copyright 2020 HIROSE ELECTRIC CO., LTD. All Rights Reserved.  
 In case of consideration for using Automotive equipment / device which demand high reliability, kindly contact our sales window correspondents.



3	(CONNECTOR)	
2	POLYESTER	
1	PS	
No.	MATERIAL	
<b>HRS</b> HIROSE KOREA CO.,LTD.		圖番 DRAWING NO. EDC3-631874
		△ 2/2