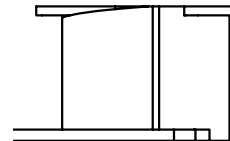
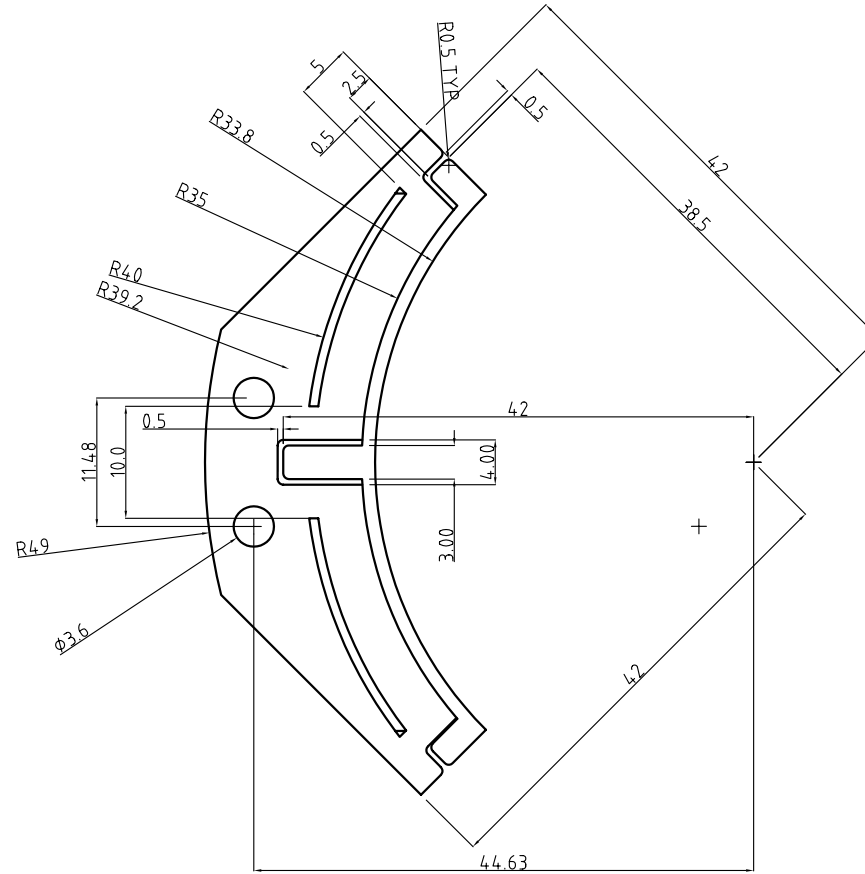
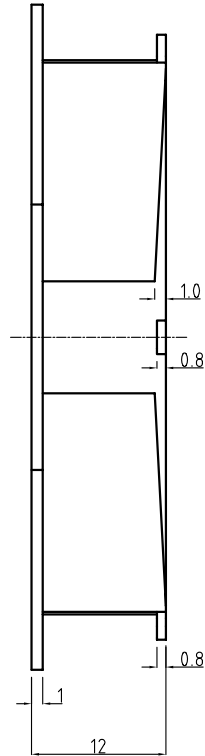
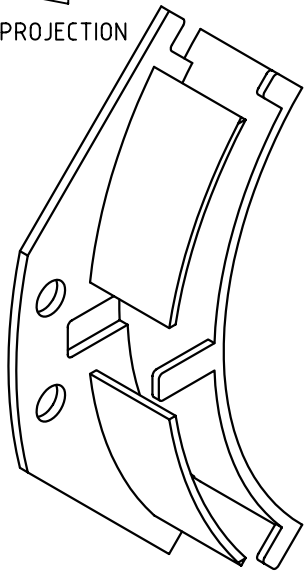


3rd ANG PROJECTION



REV	DESCRIPTION	DATE	APPROVED
1	INITIAL ISSUE	280900	CDD
2	MATL. SPEC. CHANGE	20/12/01	CN10

RICHCO ADDED RMS NO. 04/08/09

EFA04 34 P05 = EFA04 34 005 (RMS-390) WITH ADHESIVE PAD (RMS-143)
 EFA04 34 PR5 = EFA04 34 005 (RMS-390) WITH ADHESIVE PAD (RMS-143)
 AND RICHCO RIVET (RMS-56)
 EFA04 34 R05 = EFA04 34 005 (RMS-390) WITH RICHCO RIVET (RMS-56)

NOTES: F.R. NYLON 6 RADIFLAM SAE100 OR EQUIVLANT

MATERIAL	SEE NOTES	THIS DOCUMENT CONTAINS PROPRIETARY INFORMATION WHICH SHALL NOT BE REPRODUCED, TRANSFERRED TO OTHER DOCUMENTS, DISCLOSED TO OTHERS USED FOR MANUFACTURING OR ANY OTHER PURPOSE WITHOUT THE WRITTEN AUTHORISATION OF EUROPLUS FIBRE OPTICS LTD.
FINISH	Flash Free	
ICE No:		

DESCRIPTION
 35mm radius x 12mm high corner guide

ALL DIMS IN MM UNLESS STATED		GEN TOLS 0 = +/-0.5 0.0 = +/-0.3 0.00 = +/-0.1	EUROPLUS FIBRE OPTICS Europlus House, Thompson Drive, Anglia International Airpark, Rendlesham, Suffolk, IP12 2RQ. Tel: (01394) 445100 Fax: (01394) 445109		
DRAWN	CDD	DATE	280900	SIZE	FILE NAME
CHKD	CDD	DATE	280900	SCALE	2:1
DO NOT SCALE DRAWING			SCALE	2:1	
			DWG. No	EFA04 34 005	REV. 2
			SHEET	1 of 1	