

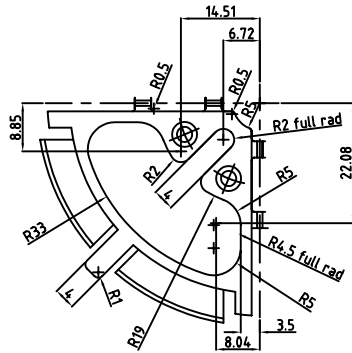
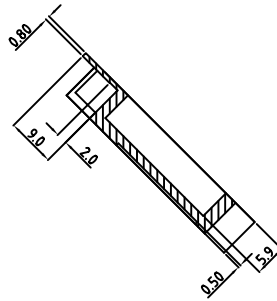
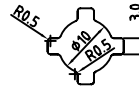
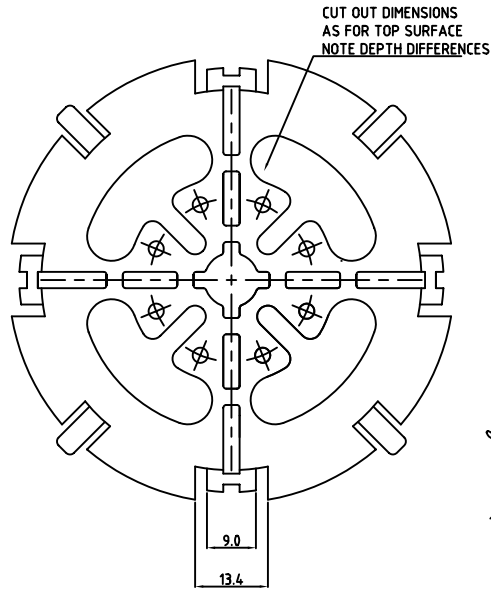


ALL DIMS IN MM UNLESS STATED

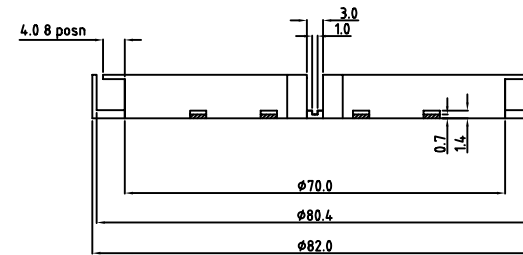
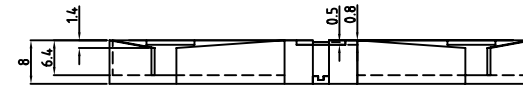
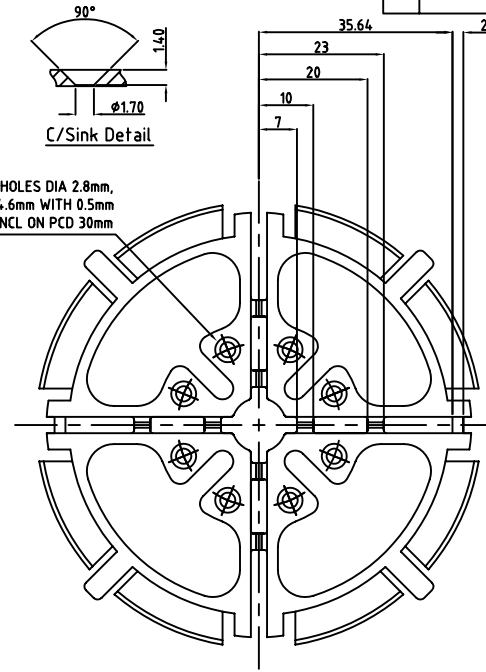
RICHCO ADDED RMS NO. 04/08/09

REV	DESCRIPTION	DATE	APPROVED
1	INITIAL ISSUE	050201	CDD

EFA04 76 ASS = EFA04 76 001 (RMS-390) WITH ADHESIVE PAD (RMS-143)



8 HOLES DIA 2.8mm,
C/SUNK DIA 4.6mm WITH 0.5mm
PARALLEL 90 DEG INCL ON PCD 30mm



No short shots or incomplete mouldings will be accepted

NOTES: No flashing allowed

MATERIAL	Sniamid C 50 H2	GEN TOLS	0 = +/-0.5 0.0 = +/-0.3 0.00 = +/-0.1	EUROPLUS FIBRE OPTICS	DESCRIPTION	THE DRAWING CONTAINS PROPRIETARY INFORMATION WHICH SHALL NOT BE REPRODUCED, TRANSMITTED TO OTHER DOCUMENTS, DISCLOSED TO OTHERS USED FOR MANUFACTURE OR ANY OTHER PURPOSE WITHOUT THE WRITTEN APPROVAL OF EUROPLUS FIBRE OPTICS LTD.	DRAWN	CDD	DATE	050201	SIZE	FILE NAME	DWG No	REV.	
FINISH	FLASH FREE			Unit 2, Deben Way, Melton, Woodbridge, Suffolk IP12 9BB Tel: (01394) 386811 Fax: (01394) 380572	FIBRE REEL 35mm RADIUS (8mm thick)		CHKD	CDD	DATE		SCALE	0476001	EFA04 76 001	1	
ICE No:											DO NOT SCALE DRAWING	SCALE	1.5:1	SHEET	1 of 1