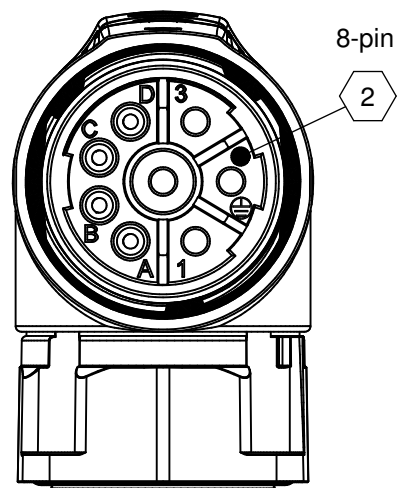


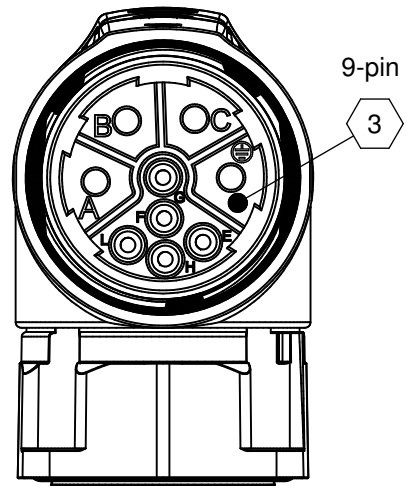
6-pin

1



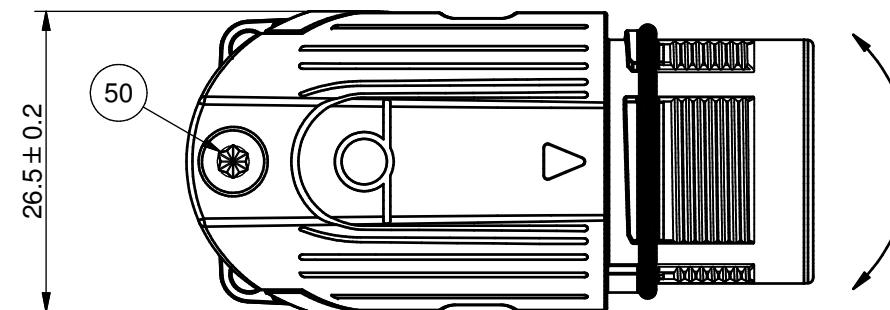
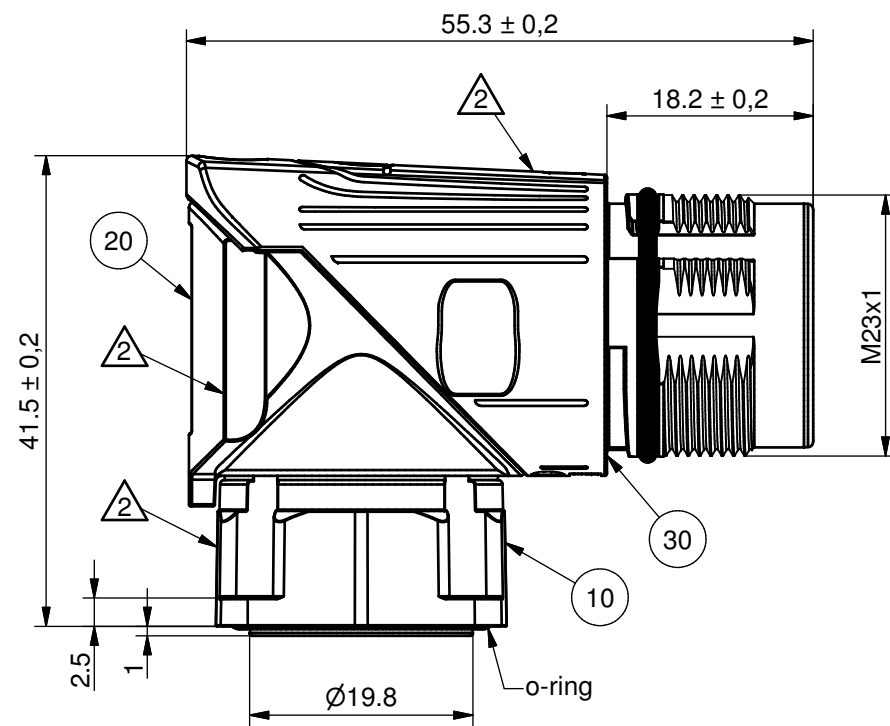
8-pin

2



9-pin

3



- surface
- BGD: black chromated
 - △3 = NiCr b 6-20µm
 - BGC: blue chromated
 - △2 = Zn 6-20µm - A
 - BGA: nickel plated
 - △1 = Cu 6-8µm Ni 4-6µm

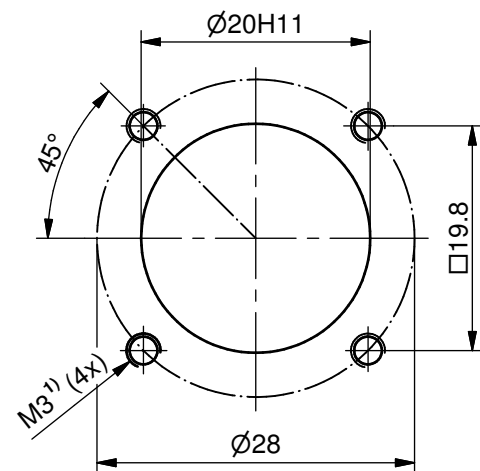
4 contact code
N 00 : without contacts

6-pin	
TE Part Nummer	IC Reference Nummer
BGC106N00001216000	BEDC106NN00001216000
8-pin	
TE part number	IC reference number
BGC110N00001216000	BEDC110NN00001216000
9-pin	
TE part number	IC reference number
BGC091N00001216000	BEDC091NN00001216000

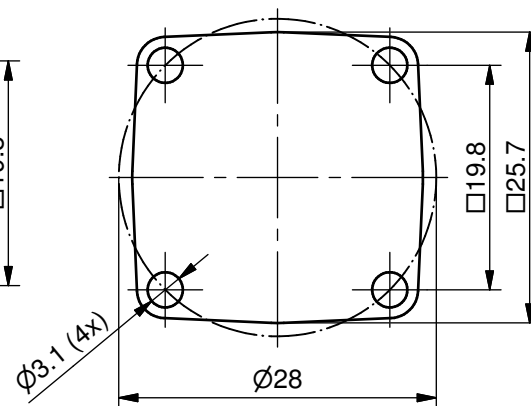
1) also possible with thread M2.5
assembly guidelines on www.intercontec.com/download/montageanleitungen

note: all part numbers are for connectors without contacts!
For connectors including contacts replace code "N 00" with code 4, see description on page 2.

mounting hole



flange dimensions



part list				
ITE	QTY	discription	material	surface/color
50	1	countersunk screw M3x10 DIN 267-30, hexalobular self-forming	steel	-
40	1	923 insulation insert (inside)	PA 66	black, white
30	1	923 front part IG3, speedtec-ready, with insulation insert, mating side	zinc diecast brass PA 66 FKM	2 1 red black
20	1	923 flange 25x25	zinc diecast FKM	2 black
10	1	923 socket IG3 rotatable	zinc diecast FKM	2 black

Weitergabe sowie Vervielfältigung dieser Unterlage, Verwertung und Mitteilung ihres Inhalts sind nicht gestattet, soweit nicht ausdrücklich zugestanden. Zuwiderhandlungen verpflichten zu Schadenersatz. Alle Rechte im Fall der Patenterteilung oder GM - Eintragung vorbehalten.

Transferand duplication of this base, utilization and communication of the contents are not permitted, until expressly conceded. Violation will result in a claim for damages. All rights reserved in case of a patent or utility model registration.

Alle Maße ohne Einheiten in mm
all dimensions without units in mm

Maßstab / scale 1,5:1
Zeichnungsnummer / drawing number 144126
Kundenzeichnung / customer drawing

Benennung / description
923 Winkeleinbaudose IG3 speedtec-ready, Flansch 25x25
923 receptacle angled IG3 speedtec-ready, flange 25x25

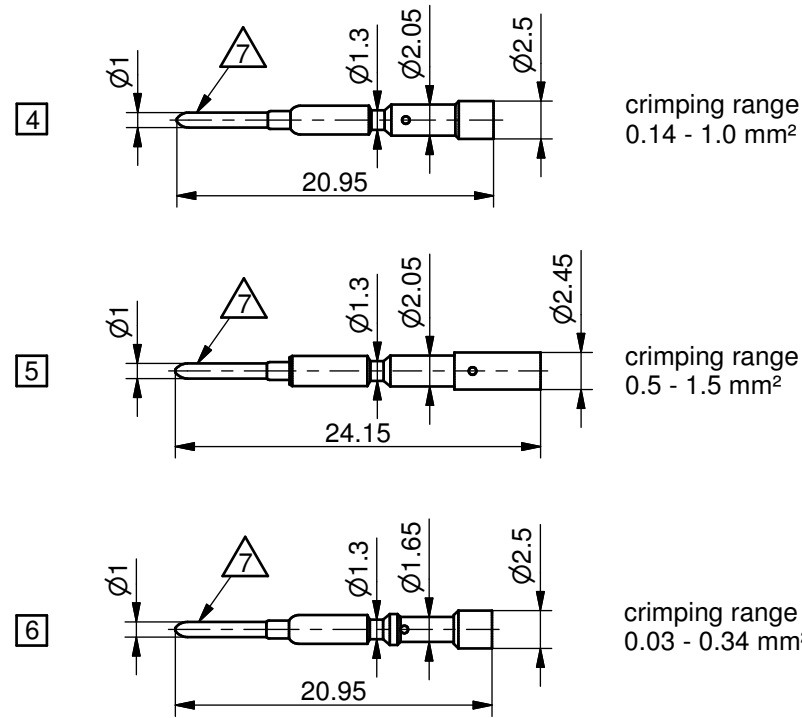
Teilenummer / part number see list
Gewicht / weight

20.03.2017 Huber 04.05.2017 Schellenb
Datum Name Datum Name
Bearbeitet Geprüft

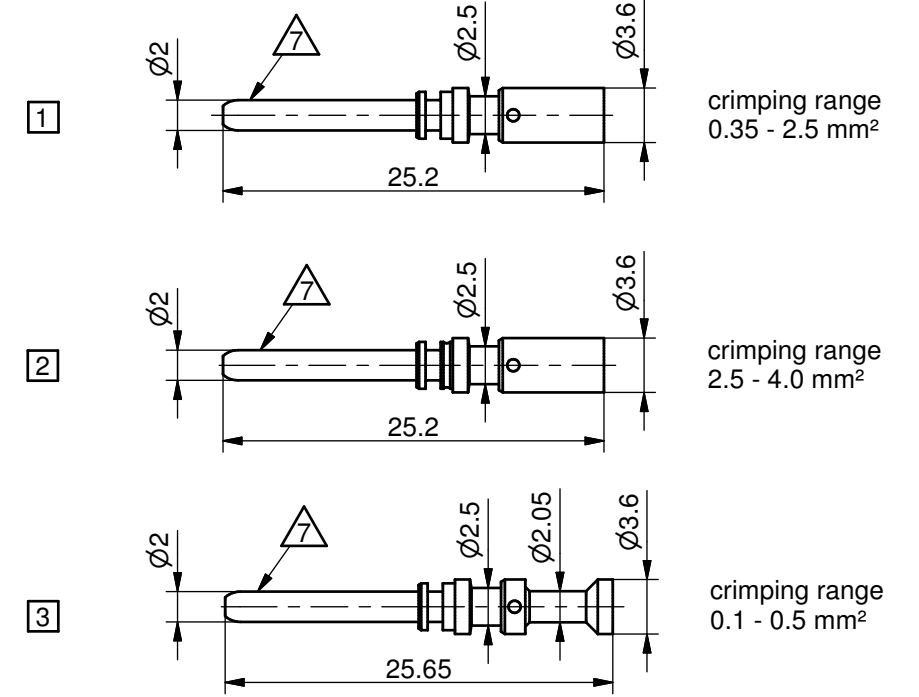
TE intercontec products

Z-Art MZ Bl. 1 von 2
doc.number Y7-0565-000-000

signal contact type: $\varnothing 1$ mm



power contact type: $\varnothing 2$ mm



4 contact code

contact code for 9 pin

TE contact code	IC ref. code	power contact type	QTY	signal contact type	QTY
N 00	NN 00	-	0	-	0
M 30	MR 30	1	4	4	5
M 44	MR 44	2	4	4	5
M 45	MR 45	1	4	6	5
M 50	MR 50	3	4	6	5
M 52	MR 52	1	4	5	5

* QTY inclusive spare parts surface

∇ = fl. Cu Ni2 Au0.2

contact code for 8 pin

TE contact code	IC ref. code	power contact type	QTY	signal contact type	QTY
N 00	NN 00	-	0	-	0
M 11	MR 11	1	4	4	4
M 19	MR 19	1	4	5	4
M 41	MR 41	3	4	6	4
M 42	MR 42	2	4	4	4
M 53	MR 53	1	1	-	-
M 93	MR 93	1	4	-	-

contact code for 6 pin

TE contact code	IC ref. code	power contact type	QTY
N 00	NN 00	-	0
M 14	MR 14	1	6
M 15	MR 15	3	2
M 18	MR 18	1	4
M 18	MR 18	2	4
M 36	MR 36	1	3
M 43	MR 43	2	6

Weitergabe sowie Vervielfältigung dieser Unterlage, Verwertung und Mitteilung ihres Inhalts sind nicht gestattet, soweit nicht ausdrücklich zugestanden. Zuwiderhandlungen verpflichten zu Schadenersatz. Alle Rechte im Fall der Patenterteilung oder GM - Eintragung vorbehalten.

Alle Maße ohne Einheiten in mm
all dimensions without units in mm

Transferand duplication of this base, utilization and communication of the contents are not permitted, until expressly conceded. Violation will result in a claim for damages. All rights reserved in case of a patent or utility model registration.

Maßstab / scale 1,5:1
Zeichnungsnummer / drawing number 144126
Kundenzeichnung / customer drawing

Rev.	Index	Datum	Name	Datum	Name
A	001	05.05.17	huber		
		Anderung	Bearbeitet		Geprüft

Benennung / description
923 Winkeleinbaudose IG3 speedtec-ready, Flansch 25x25
923 receptacle angled IG3 speedtec-ready, flange 25x25

TE intercontec products
connectivity

20.03.2017	Huber	04.05.2017	Schellenb
Datum	Name	Datum	Name
	Bearbeitet		Geprüft

Teilenummer / part number
see list
Gewicht / weight
Z-Art MZ
Bl. 2 von 2
doc.number Y7-0565-000-000