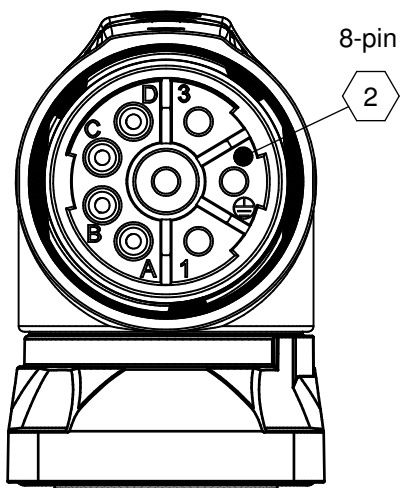
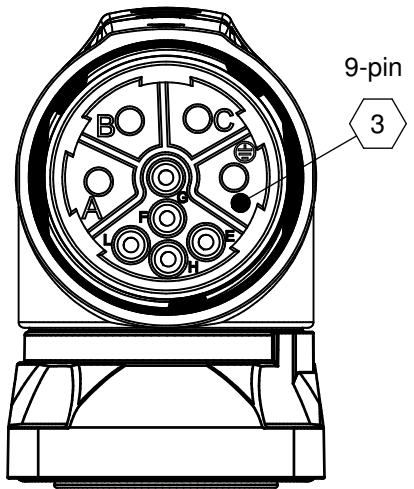


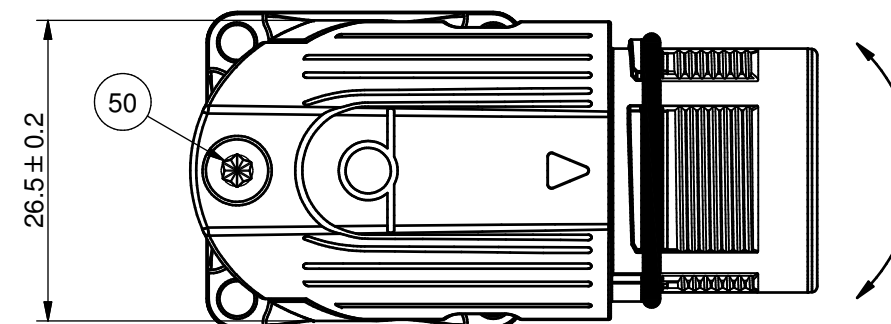
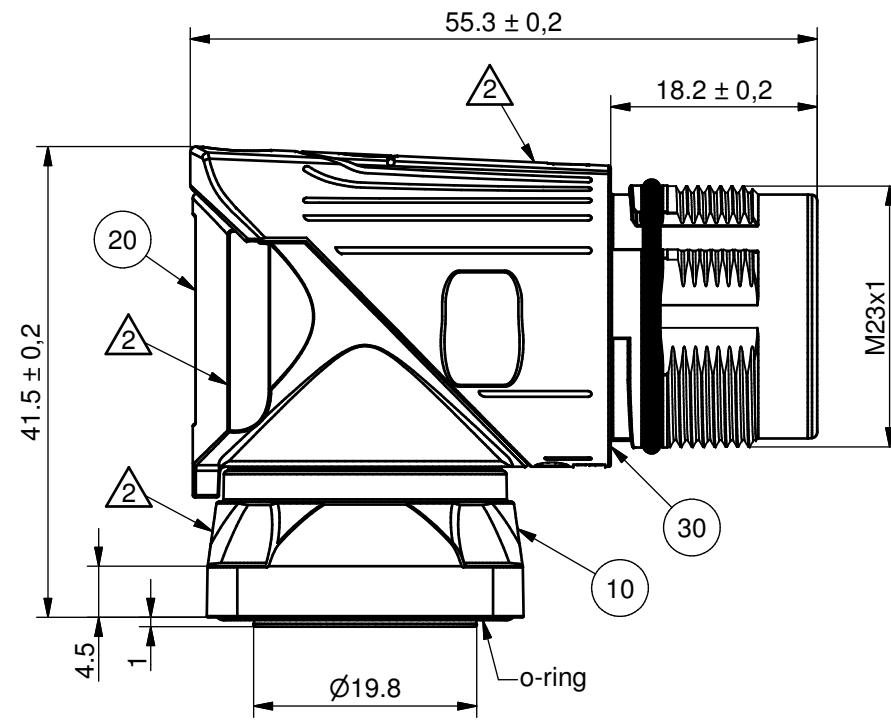
6-pin



8-pin

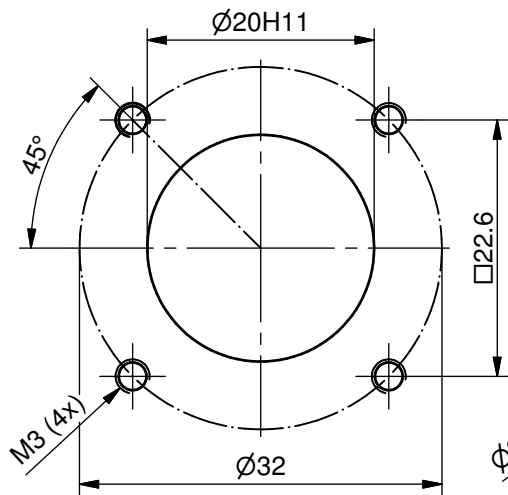


9-pin

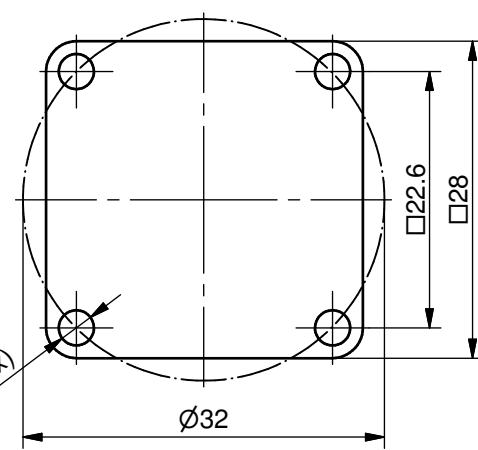


note: all part numbers are for connectors without contacts!
For connectors including contacts replace code "N 00" with code 4, see description on page 2.

mounting hole



flange dimensions



- surface
- BGD: black chromated
 - △3 = NiCr b 6-20µm
 - BGC: blue chromated
 - △2 = Zn 6-20µm - A
 - BGA: nickel plated
 - △1 = Cu 6-8µm Ni 4-6µm

4 contact code
N 00 : without contacts

6-pin	
TE Part Nummer	IC Reference Nummer
BGC106N00001200000	BEDC106NN00001200000

8-pin	
TE part number	IC reference number
BGC110N00001200000	BEDC110NN00001200000

9-pin	
TE part number	IC reference number
BGC091N00001200000	BEDC091NN00001200000

assembly guidelines on www.intercontec.com/download/montageanleitungen

part list				
ITE	QTY	discription	material	surface/color
50	1	countersunk screw M3x10 DIN 267-30, hexalobular self-forming	steel	-
40	1	923 insulation insert (inside)	PA 66	black, white
30	1	923 front part IG3, speedtec-ready, with insulation insert, mating side	zinc diecast brass PA 66 FKM	2 1 red black
20	1	923 flange 28x28	zinc diecast FKM	2 black
10	1	923 socket IG3 rotatable	zinc diecast FKM	2 black

Weitergabe sowie Vervielfältigung dieser Unterlage, Verwertung und Mitteilung ihres Inhalts sind nicht gestattet, soweit nicht ausdrücklich zugestanden. Zuwiderhandlungen verpflichten zu Schadenersatz. Alle Rechte im Fall der Patenterteilung oder GM - Eintragung vorbehalten.

Transferand duplication of this base, utilization and communication of the contents are not permitted, until expressly conceded. Violation will result in a claim for damages. All rights reserved in case of a patent or utility model registration.

Alle Maße ohne Einheiten in mm
all dimensions without units in mm

Maßstab / scale 1,5:1 Zeichnungsnummer / drawing number 144128 Kundenzeichnung / customer drawing

Benennung / description
923 Winkeleinbaudose IG3 speedtec-ready, Flansch 28x28
923 receptacle angled IG3 speedtec-ready, flange 28x28

Teilenummer / part number see list Gewicht / weight

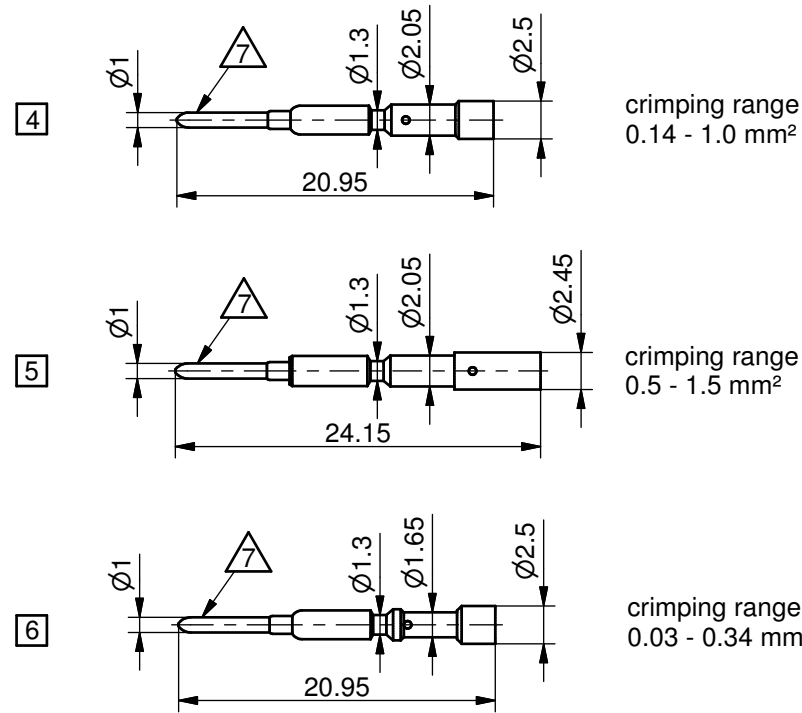
20.03.2017 Huber 04.05.2017 Schellenb
Datum Name Datum Name

Bearbeitet Geprüft

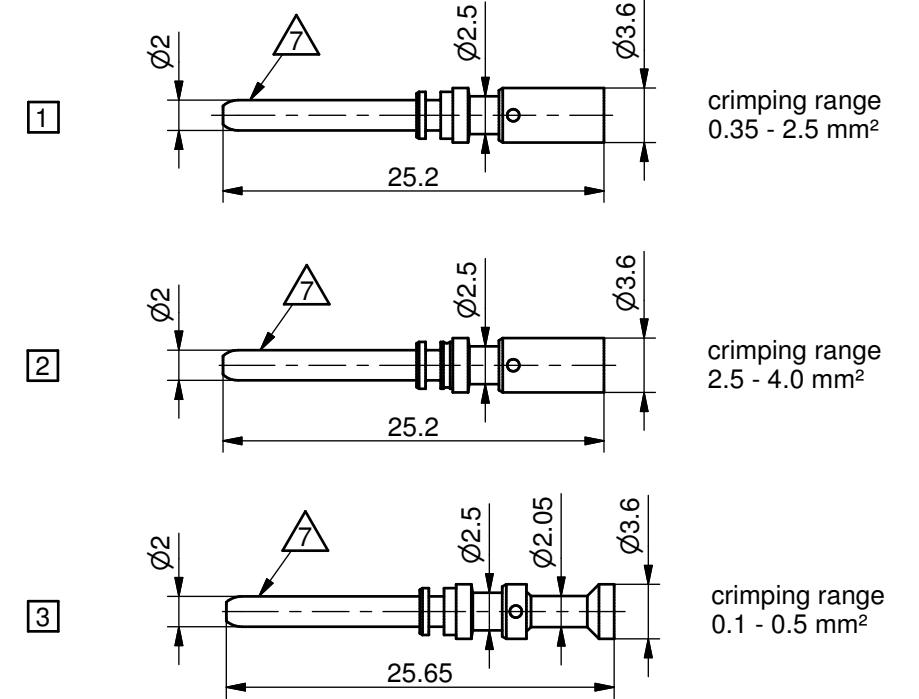
TE intercontec products

Z-Art MZ Bl. 1 von 2 doc.number Y7-0567-000-000

signal contact type: $\varnothing 1$ mm



power contact type: $\varnothing 2$ mm



4 contact code

contact code for 9 pin

TE contact code	IC ref. code	power contact type	QTY	signal contact type	QTY
N 00	NN 00	-	0	-	0
M 30	MR 30	1	4	4	5
M 44	MR 44	2	4	4	5
M 45	MR 45	1	4	6	5
M 50	MR 50	3	4	6	5
M 52	MR 52	1	4	5	5

* QTY inclusive spare parts surface

∇ = fl. Cu Ni2 Au0.2

contact code for 8 pin

TE contact code	IC ref. code	power contact type	QTY	signal contact type	QTY
N 00	NN 00	-	0	-	0
M 11	MR 11	1	4	4	4
M 19	MR 19	1	4	5	4
M 41	MR 41	3	4	6	4
M 42	MR 42	2	4	4	4
M 53	MR 53	1	1	-	-
M 93	MR 93	1	4	-	-

contact code for 6 pin

TE contact code	IC ref. code	power contact type	QTY
N 00	NN 00	-	0
M 14	MR 14	1	6
M 15	MR 15	3	2
M 18	MR 18	1	4
M 18	MR 18	2	4
M 36	MR 36	1	3
M 43	MR 43	2	6

Weitergabe sowie Vervielfältigung dieser Unterlage, Verwertung und Mitteilung ihres Inhalts sind nicht gestattet, soweit nicht ausdrücklich zugestanden. Zuwiderhandlungen verpflichten zu Schadenersatz. Alle Rechte im Fall der Patenterteilung oder GM - Eintragung vorbehalten.

Transferand duplication of this base, utilization and communication of the contents are not permitted, until expressly conceded. Violation will result in a claim for damages. All rights reserved in case of a patent or utility model registration.

Alle Maße ohne Einheiten in mm
all dimensions without units in mm

Maßstab / scale 1,5:1
Zeichnungsnummer / drawing number 144128
Kundenzeichnung / customer drawing

Rev.	Index	Datum	Name	Datum	Name
A	001	05.05.17	huber		
		Anderung	Bearbeitet		Geprüft

TE intercontec products connectivity

20.03.2017 Huber 04.05.2017 Schellenb
Datum Name Datum Name

Bearbeitet Geprüft

Benennung / description
923 Winkeleinbaudose IG3 speedtec-ready, Flansch 28x28
923 receptacle angled IG3 speedtec-ready, flange 28x28

Teilenummer / part number see list
Gewicht / weight
Z-Art MZ Bl. 2 von 2
doc.number Y7-0567-000-000