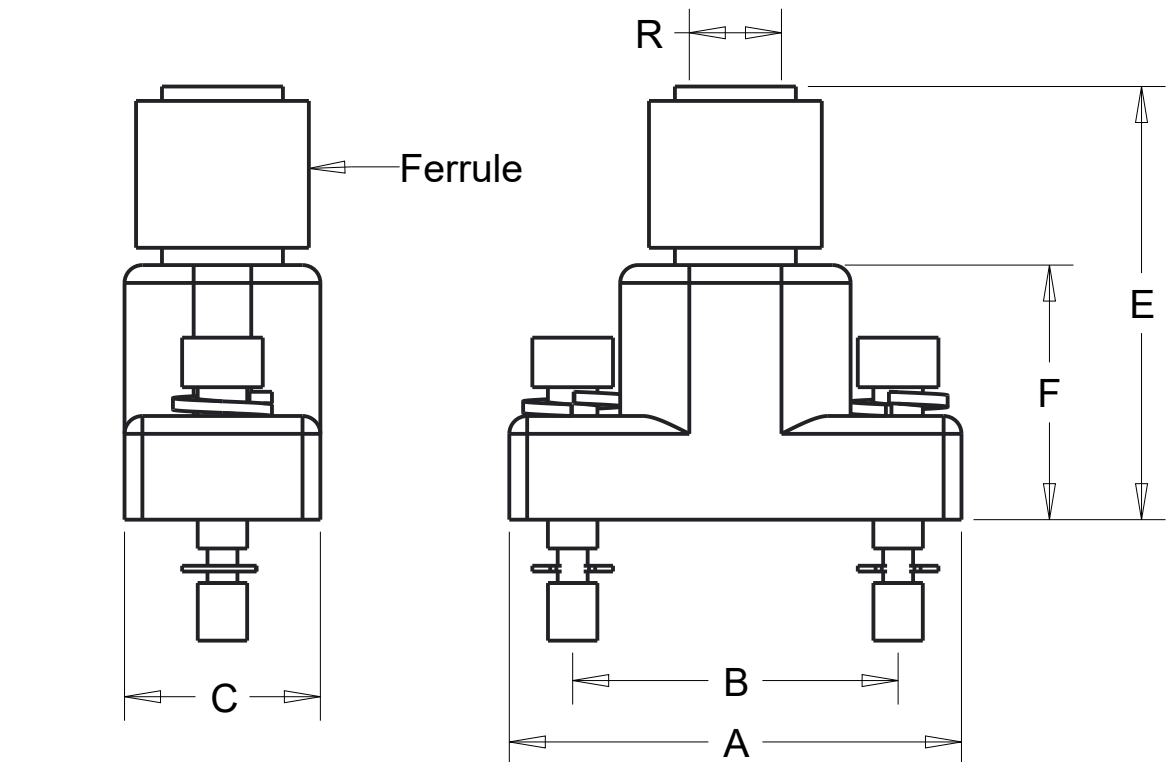


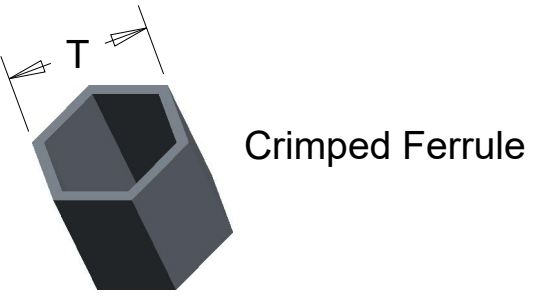
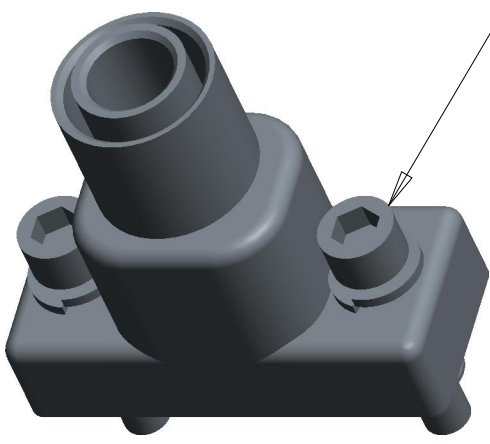
CATALOG #	Description
DCBST09AFN	Dura-Con Backshell, 9 Pin, 0.160" Dia Top Entry w/Ferrule, Nickel Plated
DCBST15BFN	Dura-Con Backshell, 15 Pin, 0.190" Dia Top Entry w/Ferrule, Nickel Plated
DCBST21CFN	Dura-Con Backshell, 21 Pin, 0.220" Dia Top Entry w/Ferrule, Nickel Plated
DCBST25DFN	Dura-Con Backshell, 25 Pin, 0.260" Dia Top Entry w/Ferrule, Nickel Plated
DCBST31EFN	Dura-Con Backshell, 31 Pin, 0.275" Dia Top Entry w/Ferrule, Nickel Plated
DCBST37FFN	Dura-Con Backshell, 37 Pin, 0.285" Dia Top Entry w/Ferrule, Nickel Plated
DCBST51GFN	Dura-Con Backshell, 51 Pin, 0.350" Dia Top Entry w/Ferrule, Nickel Plated
DCBST100HFN	Dura-Con Backshell, 100 Pin, 0.490" Dia Top Entry w/Ferrule, Nickel Plated

REV	DOCUMENT	APP	APPROVAL DATE
A	Initial Release		

SHELL SIZE	A	B	C	E	F	R	T
	MAX	±.005"	±.005"	±.020"	±.010"	±.005"	HEX
9	0.785	0.565	0.340	0.752	0.442	0.160	0.255
15	0.935	0.715	0.340	0.802	0.492	0.190	0.290
21	1.085	0.865	0.340	0.852	0.542	0.220	0.324
25	1.185	0.965	0.360	0.902	0.592	0.260	0.359
31	1.335	1.115	0.360	0.942	0.632	0.275	0.359
37	1.485	1.265	0.360	0.982	0.672	0.285	0.384
51	1.435	1.215	0.413	1.062	0.752	0.350	0.475
100	2.17	1.800	0.450	1.127	0.817	0.490	0.622



Hardware Kit Includes 2 Each:
 #2-56 Socket Head Screw for Sizes 9-51
 #4-40 Socket Head Screw for Size 100
 Lock Washer and Retaining E Clip



UNITS ENGLISH INCHES	PRO/E	CINCH	
DO NOT SCALE DRAWING	DESIGN ENGINEER D. Guinn	DATE 10/02/2020	TITLE Dura-Con EMI Backshell Straight Central Exit w Jackposts
UNLESS OTHERWISE SPECIFIED: ALL DIMENSIONS ARE IN INCHES	MATERIAL Aluminum		CONTROL SPEC NUMBER
FILLET/RADII .02 MAX.	MATERIAL SPEC NUMBER		PROJECT NUMBER
TOLERANCES XX ± .1 XXX ± .01 XXX ± .005 ANGULAR ± .5	FINISH As Specified		
CONFIDENTIAL THIS DOCUMENT IS THE PROPERTY OF CINCH. NEITHER THIS DOCUMENT NOR ANY OF THE INFORMATION CONTAINED IN IT MAY BE DUPLICATED OR DISCLOSED WITHOUT PRIOR WRITTEN CONSENT OF CINCH. ©COPYRIGHT 10/02/2020 CINCH	APPROVALS ON FILE		CAD FILE NUMBER DCBSTXXXXFN
	DRAWING NUMBER DCBSTxxxxyFN		CAGE IDENT NO. SIZE 71785 B
	SCALE 3.000		SHEET 1 OF 1

MODELED BY:
D. Guinn
1700 FINLEY RD
LOMBARD, IL 60148