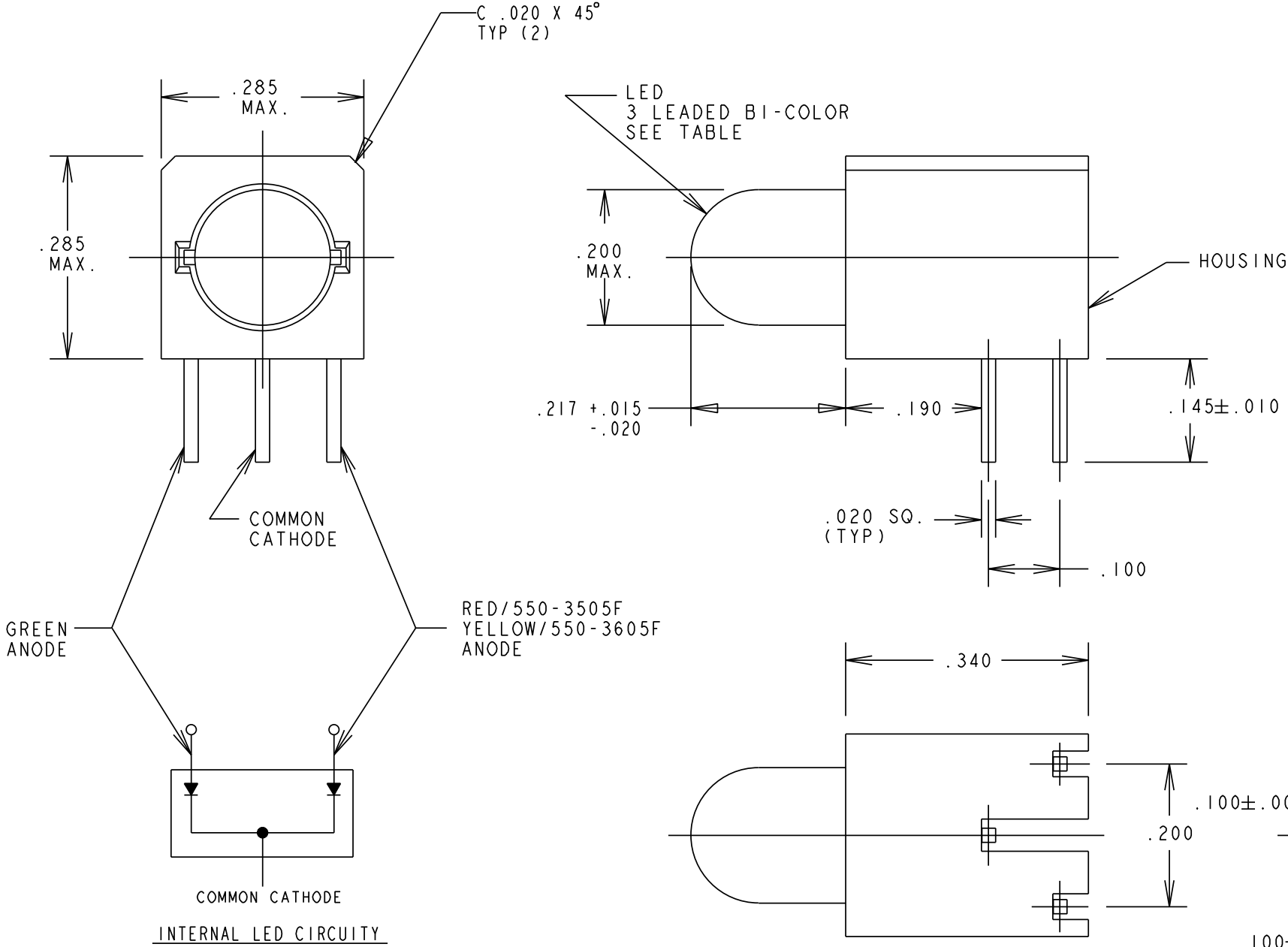


LED COLOR = RED/GREEN BI-COLOR 550-3505F						
OPERATING CHARACTERISTICS AT 25°C AMBIENT						
CHARACTERISTICS	LED COLOR	MIN	TYP	MAX	UNITS	TEST CONDITIONS
LUMINOUS INTENSITY	RED	2.1	5		mcd	I _F = 10 mA
	GREEN	4.2	8			
FORWARD VOLTAGE	RED		2.1	2.5	V	I _F = 10 mA
	GREEN		2.3	2.7		
REVERSE VOLTAGE	RED	5			V	I _R = 100 μA
	GREEN	5				
PEAK WAVELENGTH	RED		635		nm	
	GREEN		565			
VIEWING ANGLE	ALL		65		Degree	

LED COLOR = RED/GREEN BI-COLOR 550-3605F						
OPERATING CHARACTERISTICS AT 25°C AMBIENT						
CHARACTERISTICS	LED COLOR	MIN	TYP	MAX	UNITS	TEST CONDITIONS
LUMINOUS INTENSITY	YELLOW	2.1			mcd	I _F = 10 mA
	GREEN	4.2				
FORWARD VOLTAGE	YELLOW		1.6	2.5	V	I _F = 10 mA
	GREEN		1.6	2.7		
REVERSE VOLTAGE	YELLOW	5			V	I _R = 100 μA
	GREEN	5				
PEAK WAVELENGTH	YELLOW		583		nm	
	GREEN		565			
VIEWING ANGLE	ALL		65		Degree	

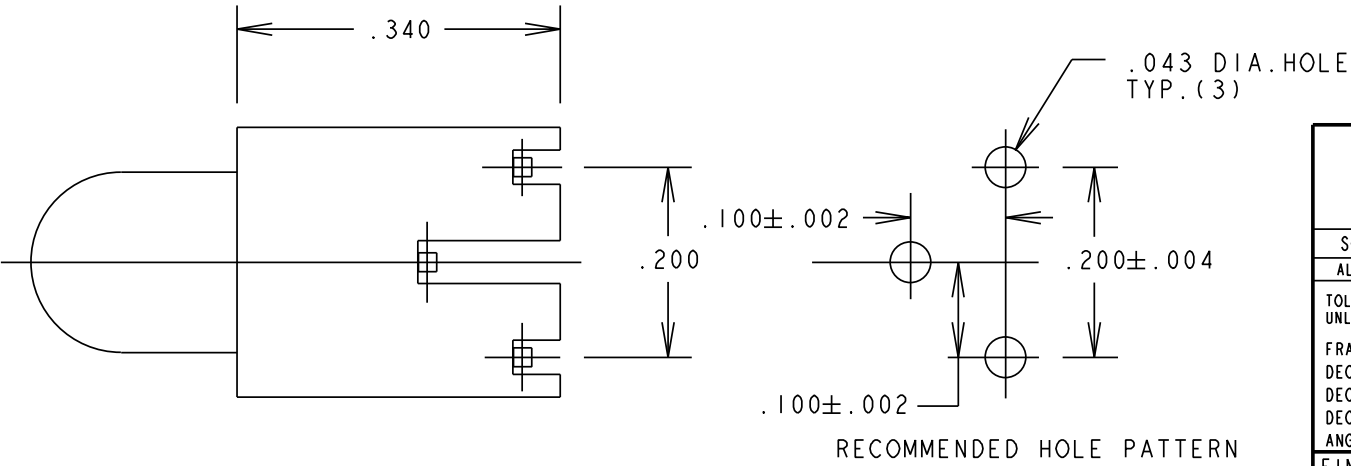
REV	ECN NO	REVISIONS	DRN	CKD	APP	DATE
A	—	NEW RELEASE	SM			




ABSOLUTE MAXIMUM RATING AT 25°C AMBIENT	UNITS	RED/GREEN	YELLOW/GREEN
POWER DISSIPATION	mW	135	135
DERATE LINEARLY FROM 50°C	mA/°C	0.5	0.5
AVERAGE FORWARD CURRENT	mA	25	25
PEAK FORWARD CURRENT	mA	90	90
TRANSIENT FORWARD CURRENT (10 μsec PULSE)	mA	500	500
LEAD SOLDERING TEMPERATURE, 5 SEC., 1/16" FROM BODY	°C	260	260
OPERATING TEMPERATURE	°C	-20 TO +85	-20 TO +85
STORAGE TEMPERATURE	°C	-55 TO +100	-55 TO +100

- NOTES:
- LEADS TO FIT INTO .043 DIA. HOLES SPACED AS PER HOLE PATTERN.
 - LED LEAD DIMENSIONS SHOWN ARE MEASURED AT HOUSING EXIT.
 - PIN NUMBERS FOR REFERENCE ONLY. DESIGNATION NON-EXISTENT ON PARTS.
 - DIALIGHT PART NO. 550-3505F, 550-3605F.

RoHS Compliant 550-3X05F
Part Numbers with the "F" suffix ending are RoHS Compliant.
Example: 550-3505F
Packaging is marked with "RoHS Compliant" label or equivalent markings.
Parts can be wave soldered, dip soldered or hand soldered using typical lead-free soldering process with max 260°C temp. for 5 sec.



THIS DRAWING AND THE CONTENTS HEREIN ARE CONFIDENTIAL AND THE SOLE PROPERTY OF DIALIGHT. REPRODUCTION OF THIS DRAWING OR CONSTRUCTION OF ANY PARTS WITHIN THIS DRAWING ARE FORBIDDEN WITHOUT THE WRITTEN CONSENT OF DIALIGHT.			
SCALE: DRAWING SCALE ALL DIM'S IN: INCHES (MM)		DRAWING NUMBER C - 17434	REV A
TOLERANCES: UNLESS OTHERWISE SPECIFIED FRACTIONS: ±1/64 DECIMALS (.XX): ±.01 DECIMALS (.XXX): ±.005 DECIMALS (.XXXX): ±.0005 ANGLES: ±1°		TITLE 5mm 3 LEADED BI-COLOR CBI RoHS COMPLIANT	
FINISH:		MATERIAL	
FSCM 83330		Dialight  FARMINGDALE, NJ 07727	1501 ROUTE 34 SOUTH FARMINGDALE, NJ 07727
		SHEET 1 OF 1	FAMILY TABLE: