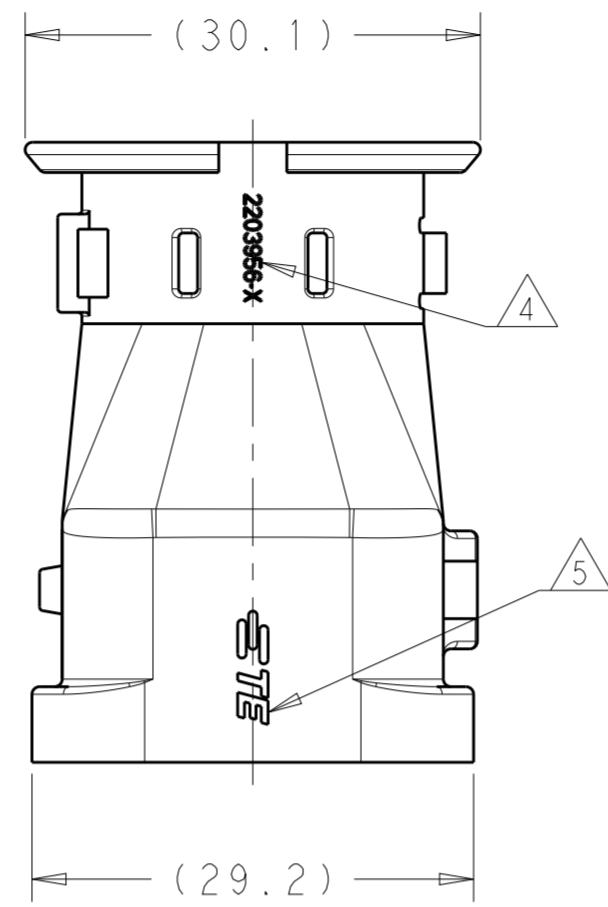
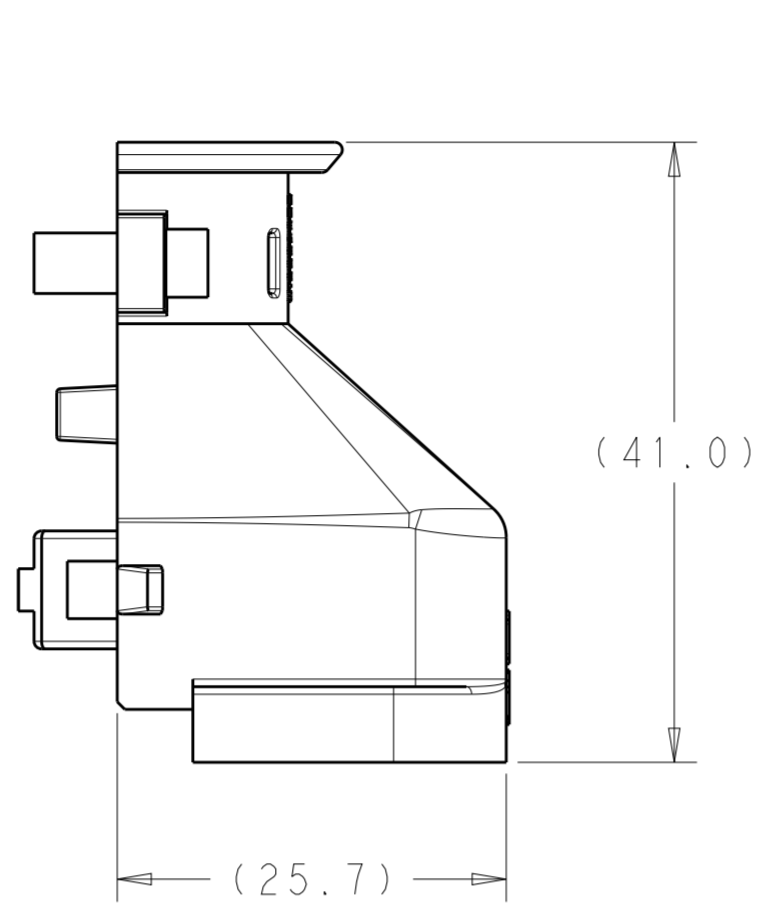
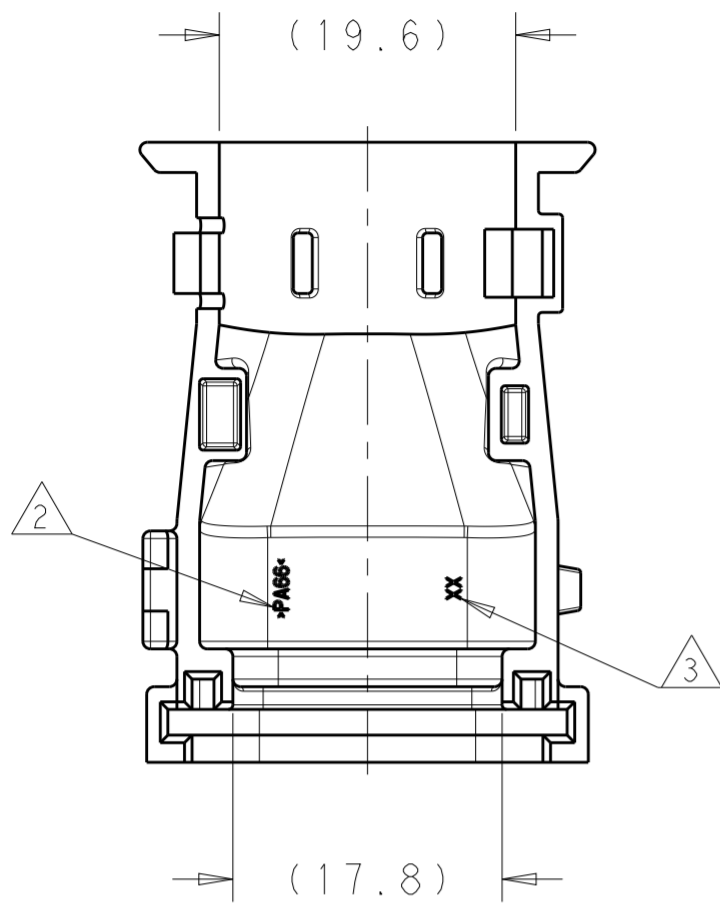


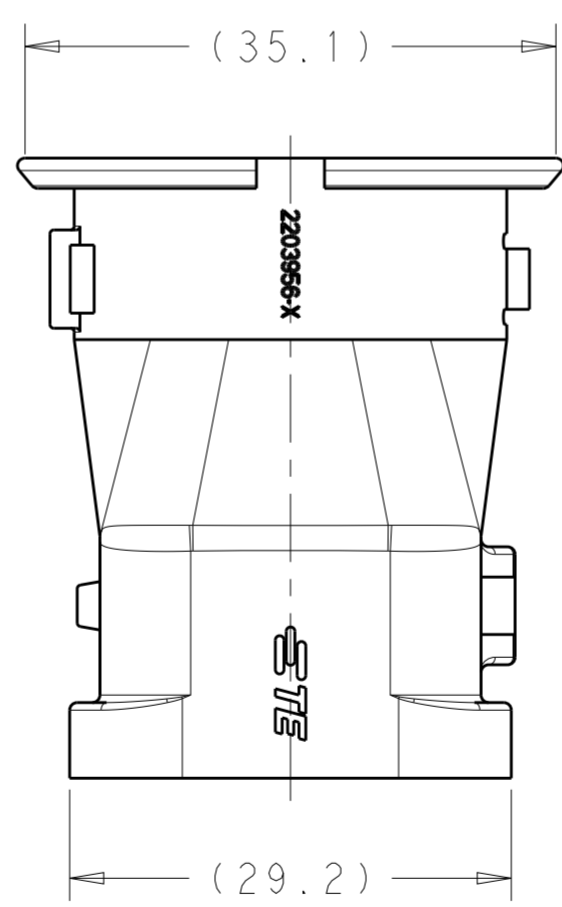
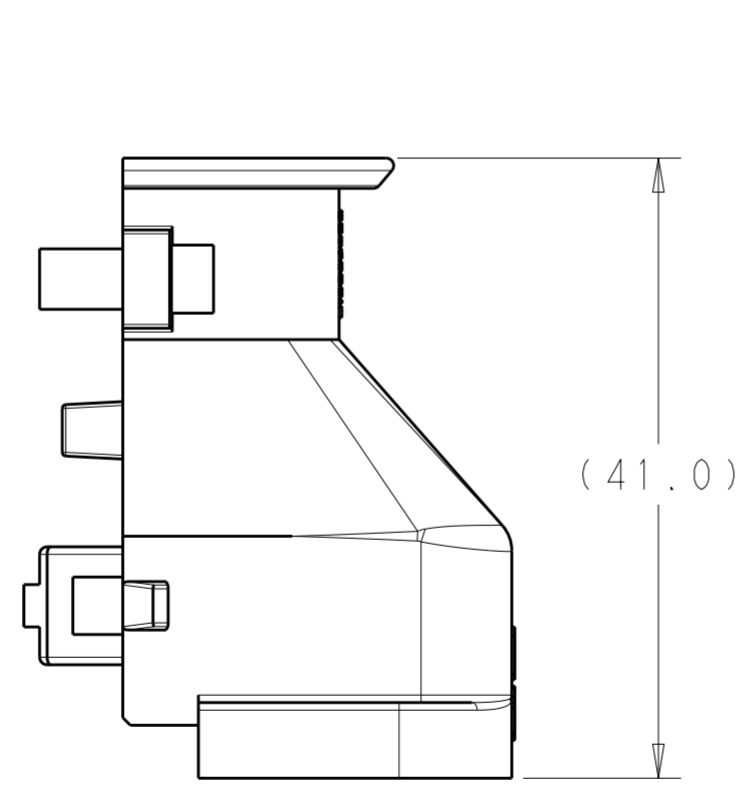
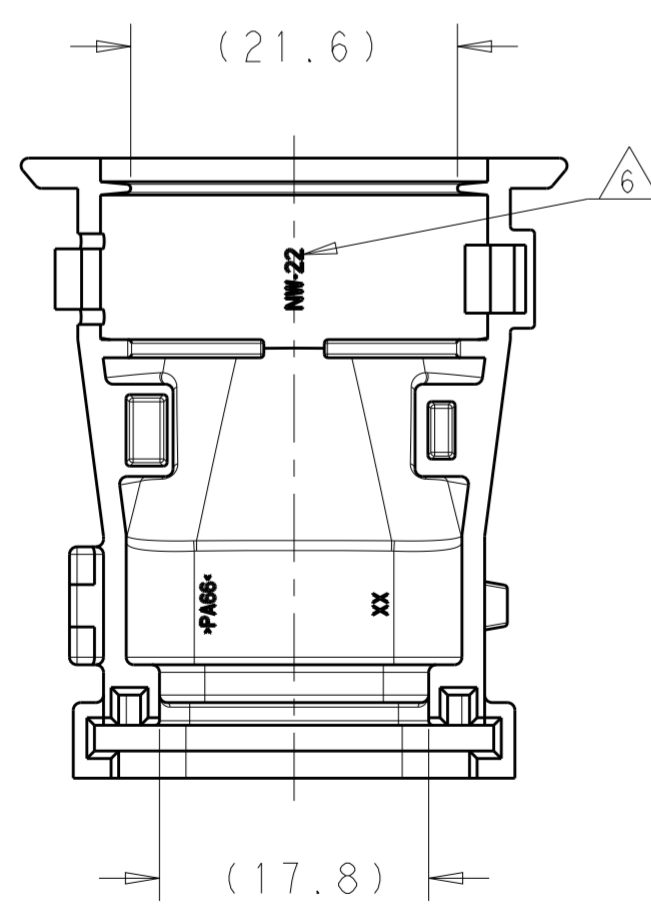
THIS DRAWING IS UNPUBLISHED. RELEASED FOR PUBLICATION
 © COPYRIGHT copyright.d8te- ALL RIGHTS RESERVED.

REVISIONS				
P	LTR	DESCRIPTION	DATE	APVD
A		INITIAL RELEASE	22MAR2017	JM DS

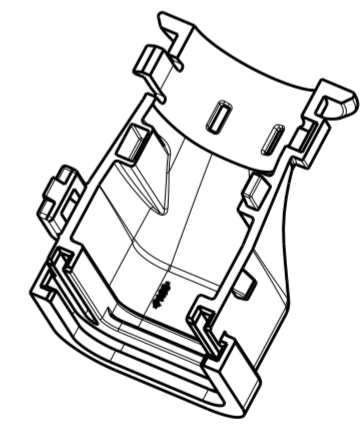


2203956-1

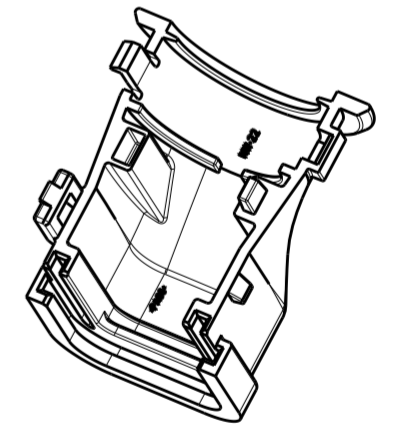
- ① MATERIAL: ASCEND VYDYNE ECO-315, PA66, TE PN 704588-4.
- ② MATERIAL ID, >PA66/6< LOCATED APPROXIMATELY AS SHOWN.
- ③ CAVITY ID LOCATED APPROXIMATELY AS SHOWN.
- ④ TE PART NUMBER LOCATED APPROXIMATELY AS SHOWN.
- ⑤ COMPANY LOGO LOCATED APPROXIMATELY AS SHOWN.
- ⑥ NW CHARACTERS LOCATED APPROXIMATELY AS SHOWN.



2203956-2



2203956-1



2203956-2

⑥	NW-22	2203956-2
	SMOOTH	2203956-1
	WIRE EXIT	PART NO

THIS DRAWING IS A CONTROLLED DOCUMENT.		DWN D STRAUSSER	28 JAN 2017	TE Connectivity	
DIMENSIONS: mm		CHK -	APVD -		
TOLERANCES UNLESS OTHERWISE SPECIFIED:		PRODUCT SPEC -		SIZE A2	
0 PLC ±		APPLICATION SPEC -		CAGE CODE -	
1 PLC ±		WEIGHT -		DRAWING NO G-2203956	
2 PLC ±		CUSTOMER DRAWING		RESTRICTED TO -	
3 PLC ±		SCALE 2:1		SHEET 1 OF 1	
4 PLC ±				REV A	
ANGLES ±					
FINISH -					