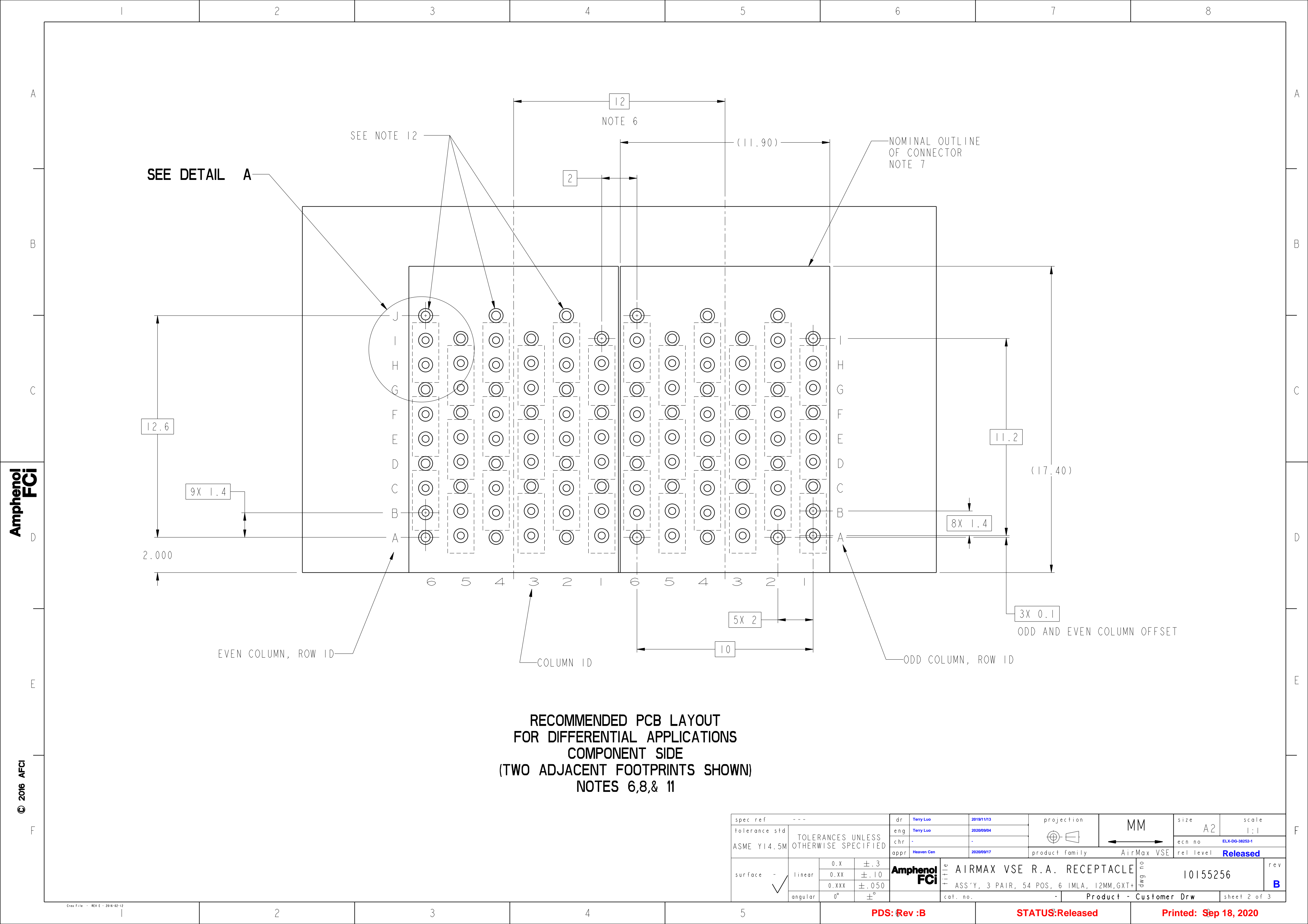


[illegible]

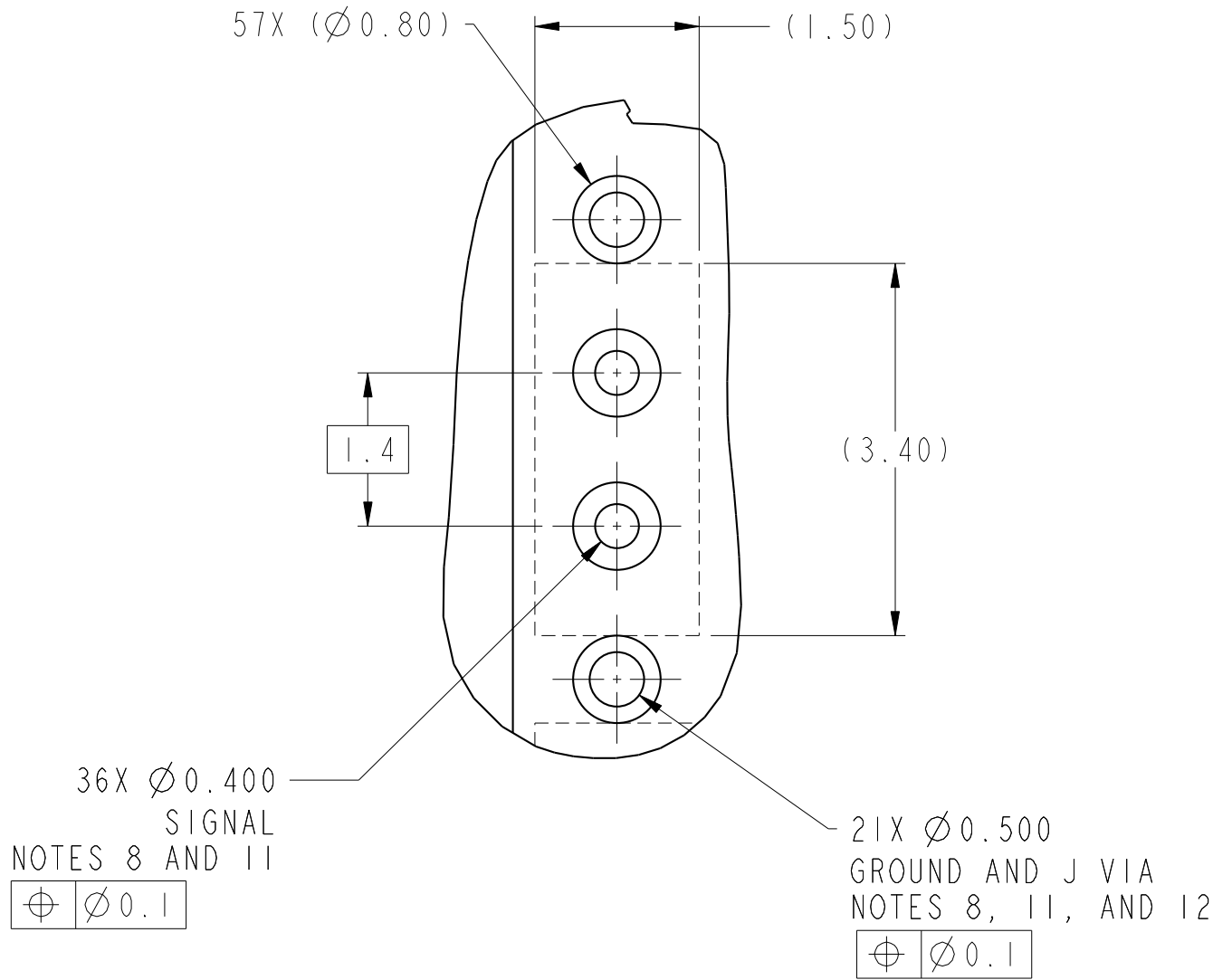


RECOMMENDED PCB LAYOUT
FOR DIFFERENTIAL APPLICATIONS
COMPONENT SIDE
(TWO ADJACENT FOOTPRINTS SHOWN)
NOTES 6,8,& 11

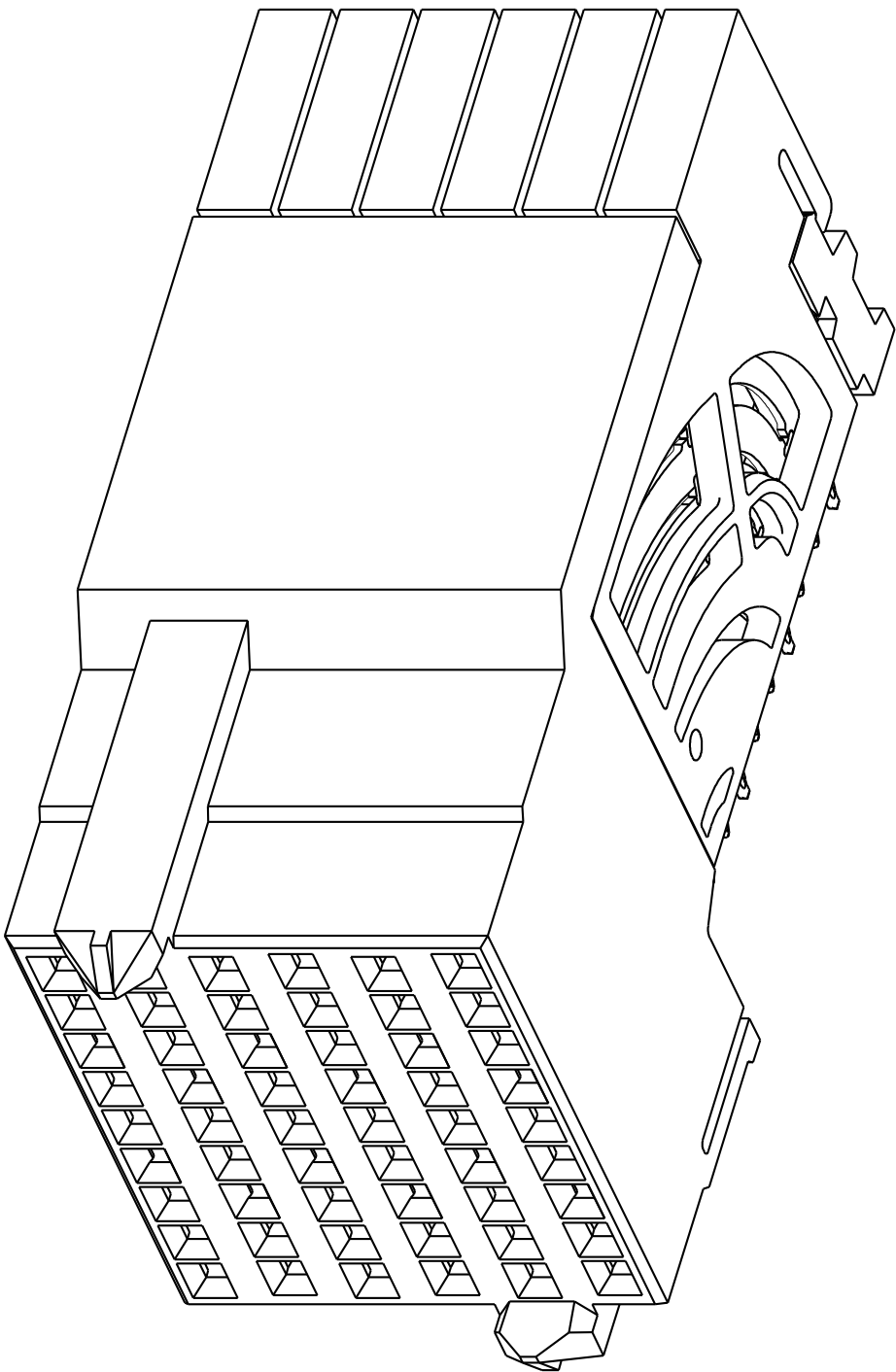
spec ref				---		dr		Terry Luo		2019/11/13		projection		MM		size		A2		scale		1:1							
tolerance std				ASME Y14.5M		TOLERANCES UNLESS OTHERWISE SPECIFIED				eng		Terry Luo		2020/09/04						ecn no		ELX-DG-38252-1							
										chr		-				product family		AirMax VSE		rel level		Released							
										appr		Heaven Cen		2020/09/17															
surface		- ✓		linear		0.X		±.3		Amphenol FCI		title		AIRMAX VSE R.A. RECEPTACLE								avg no		10155256		rev		B	
						0.XX		±.10																					
						0.XXX		±.050																					
						angular		0°																					
												cat. no.		-		Product - Customer Drw								sheet 2 of 3					

PRODUCT NUMBER	PRESS-FIT TAIL PLATING TYPE
10155256-101	TIN/LEAD ALLOY OVER NICKEL
10155256-101LF	TIN OVER NICKEL (LEAD FREE)

- 1 - CONNECTOR MATERIALS:
HOUSING: HIGH TEMP THERMOPLASTIC, NATURAL, UL94-V0
IMLA PLASTIC: HIGH TEMP THERMOPLASTIC, BLACK, UL94-V0
CONTACT: COPPER ALLOY
ORGANIZER: HIGH TEMP THERMOPLASTIC, WHITE, UL94-V0
- 2 - CONTACT PLATING:
SEPARABLE INTERFACE:
PERFORMANCE-BASED PLATING, QUALIFIED TO MEET THE
REQUIREMENTS OF FCI PRODUCT SPECIFICATION GS-12-0956
INCLUDING TELCORDIA GR-1217-CORE (NOVEMBER 1995)
CENTRAL OFFICE TEST SEQUENCE
- PRESS-FIT TAILS: SEE TABLE
- 3 - PRODUCT SPECIFICATION: GS-12-0956
- 4 - APPLICATION SPECIFICATION: GS-20-0305.
- 5 - PRODUCT MARKING, (PART NUMBER & LOT CODE), ON THIS SURFACE.
- 6 - THE MINIMUM CENTERLINE SPACING BETWEEN ADJACENT
MODULES IS 12.0 MM.
- 7 - CONNECTOR OUTLINE MAY BE SCREEN PRINTED ONTO CUSTOMER PCB TO
BE USED AS A GUIDE FOR MANUAL CONNECTOR PLACEMENT.
- 8 - REFER TO CUSTOMER DRAWING 10104444 FOR INFORMATION
ON PCB HOLE DIAMETERS AND PLATING OPTIONS
- 9 - LEAD FREE PRODUCT MEETS THE EUROPEAN UNION DIRECTIVES &
OTHER COUNTRY REGULATIONS AS DESCRIBED IN GS-22-008
- 10 - PACKAGING MEETS GS-14-920 LEAD FREE LABELING
SPECIFICATION.
- 11 - GROUND CONTACTS (C,F, AND I IN ODD COLUMNS AND A, D, AND G,
EVEN COLUMNS) REQUIRE (Ø0.500) FINISHED HOLES. SIGNAL LOCATIONS
REQUIRE (Ø0.400) FINISHED HOLES.
- 12 - THESE OUTER VIAS (J) ARE OPTIONAL. WHILE NO CONNECTOR EONS ARE
PRESSED INTO THESE HOLES WE RECCOMEND (Ø0.500) FINISHED HOLES
AT THESE LOCATIONS TO PROVIDE GROUND SYMMETRY THROUGH THE PCB.



DETAIL A
SCALE 16:1



10155256-101 OR -101LF

spec ref	---	dr	Terry Luo	2019/11/13	projection	MM	size	A2	scale	4:1
tolerance std	ASME Y14.5M	eng	Terry Luo	2020/09/04	chr	-	ecn no	ELX-DG-38252-1	rel level	Released
surface	linear	0.X	±.3	0.XX	±.10	0.XXX	±.050	angular	0°	±°
TOLERANCES UNLESS OTHERWISE SPECIFIED		Amphenol FCI		title		AIRMAX VSE R.A. RECEPTACLE		dwg no		10155256
						ASS'Y, 3 PAIR, 54 POS, 6 IMLA, 12MM,GXT+				rev
						cat. no.		Product - Customer Drw		sheet 3 of 3