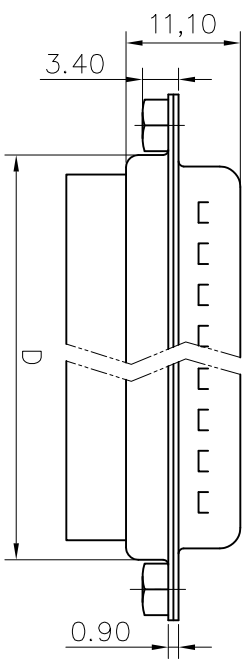
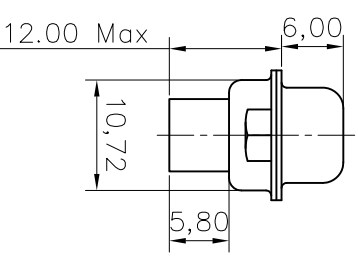
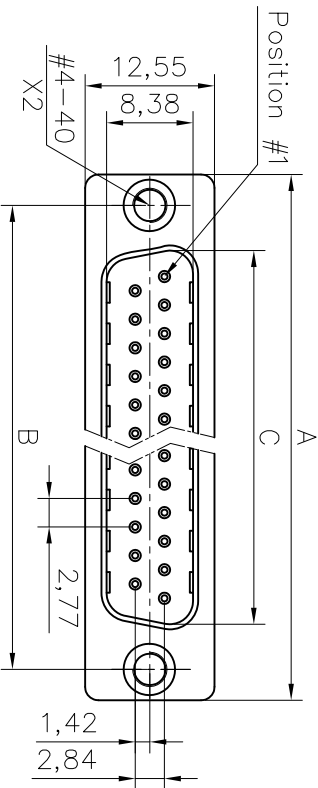


This document is the property of Amphenol Corporation and is supplied on the express condition that it is not to be duplicated, reproduced or used, in whole or in part, without the prior consent of Amphenol Corporation. Amphenol Corporation will not be held responsible for any errors or omissions or to use any information in this document.



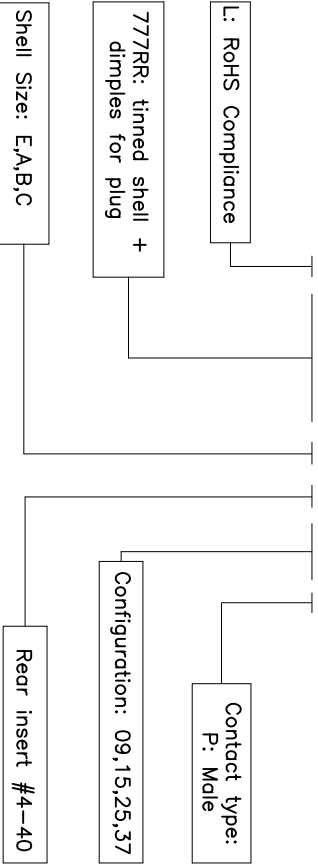
REVISIONS				
SM	EDN	DESCRIPTION	DATE	APPROVED
1			11/20/08	
2		Modify pitch and shell height	Apr/24/12	Tony

**D-SUB TECHNICAL DATA**

SHELL : Steel 2.5um (100u") min tin over 1.25um (50u") min nickel  
 BODY : Glass filled thermoplastic.  
 Flame retardant to UL94 V-0 Color Black  
 REAR INSERT : Brass;.50u" min nickel.  
 ELECTRICAL : Voltage rating : 1000 V RMS at 60 Hz  
 Insulation resistance >1000 M Ohms  
 CLIMATIC : Temperature range -55 °C up to 125°C  
 MARKING : Amphenol-...(Series No.)

**PRODUCT CODE**

**L 777RR X H XX P**



**Customer drawing for proposal**

DIM.S	A	B	C	D
SHELL				
9	30.84	24.99	16.92	19.28
15	39.24	33.32	24.70	27.51
25	53.04	47.04	38.96	41.30
37	69.32	63.50	55.42	57.71

<b>UNLESS OTHERWISE SPECIFIED</b> TOLERANCES U.S. METRIC .X +/- 0.50 .XX +/- 0.30 .XXX +/- 0.20 ANGLES +/- S°		<b>APPROVAL</b> DRAWN: [Signature] Apr/24/12 CHECKED: [Signature] Apr/24/12	<b>DATE</b> Apr/24/12
<b>FOR MATERIALS AND FINISHES</b> SEE DRAWING REMOVE SHARP EDGES DIMENSIONS IN MILLIMETERS		<b>TITLE</b> Stamped and formed connector, RR series Amphenol East Asia Limited	
<b>SIZE</b> DRAWING NO. A4 C L777RRXHXXP		<b>REV.</b> 2	
<b>SCALE</b> NONE		<b>SHEET</b> 1 OF 1	