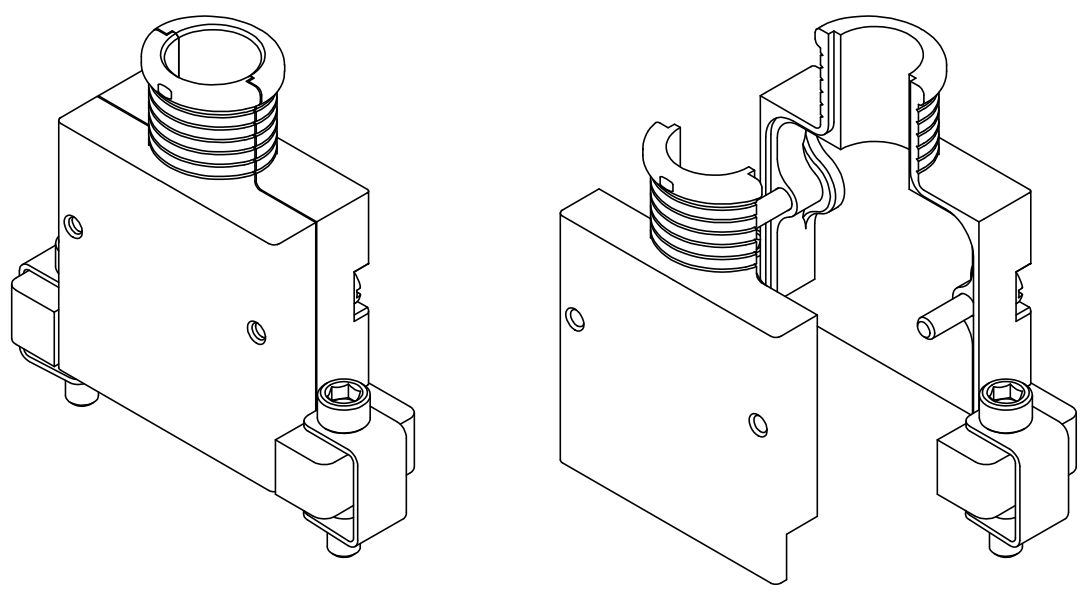


REVISIONS



MICRO-MINIATURE SPLIT BACKSHELL WITH MICRO BAND SCREENED CABLE TERMINATION

EXAMPLE PART DESCRIPTION: MB MMD - U D T M S 0 - 05 - 20 - 1 - C - S

TERMINATION SERIES \_\_\_\_\_  
 (MB - MICRO BAND)  
 CONNECTOR \_\_\_\_\_  
 (SEE NOTE 2)  
 ENTRY POSITION \_\_\_\_\_  
 SHELL SIZE \_\_\_\_\_  
 SHELL STYLE \_\_\_\_\_  
 INTERFACE VARIANT \_\_\_\_\_  
 FLANGE STYLE \_\_\_\_\_  
 GROUNDING OPTION \_\_\_\_\_  
 ENTRY SIZE \_\_\_\_\_  
 MAIN BODY HEIGHT IN mm \_\_\_\_\_  
 MATERIAL (REFER TO SS0076) \_\_\_\_\_  
 PLATING/FINISH (REFER TO SS0076) \_\_\_\_\_  
 HARDWARE OPTION \_\_\_\_\_

- NOTES.
- THIS PRODUCT IS DESIGNED TO TERMINATE A BRAIDED CABLE SHIELD TO A CONNECTOR.
  - THIS PRODUCT IS DESIGNED TO MATE WITH CONNECTORS CONFORMING TO:
    - MIL-DTL-83513/1, /2, /3 AND /4, SHELL SIZES A, B, C, D, E, F, G AND H
  - BACKSHELL TO BE PERMANENTLY MARKED/BAGGED AND LABELLED WITH CODE IDENTIFICATION NUMBER AND PART NUMBER (e.g. U5792 - MBMMD-UDTMS0-05-30-1-C-S)

THIS DRAWING IS UNPUBLISHED. ALL RIGHTS RESERVED. COPYRIGHT 20 BY

DIMENSIONS: MILLIMETERS	DWN: D. WRIGLEY 09/08/2019	MATERIAL:	FINISH:
	CHK: R. STYLES 13/08/2019	<b>STE</b> TE Connectivity	
TOLERANCES UNLESS OTHERWISE SPECIFIED:  GENERAL TOL LINEAR ±0,25MM ANGULAR ±1°	APVD: M. PAUL 09/08/2019	PART NUMBER: MBMMD (SPLIT) SERIES	
	PRODUCT SPEC: -	NAME: MICRO BAND TERMINATION MICRO MINIATURE SPLIT BACKSHELL	
APPLICATION SPEC: -	WEIGHT:	SIZE: A4	RESTRICTED TO
	CUSTOMER DRAWING	CAGE CODE: U5792	DRAWING NO: P43737
		SCALE: 2:1	SHEET: 1 OF 5 REV: AB

REVISIONS

PART NUMBER BREAKDOWN STANDARD VARIABLES

ENTRY POSITION (SEE SHEET 3):

- U - TOP ENTRY
- F - END 45° ENTRY
- E - END 90° ENTRY

SHELL SIZE:

- A, B, C, D, E, F, G, H

SHELL STYLE:

- T - TWO PIECE (SPLIT) BODY

INTERFACE VARIANT:

- M - MIRRORED

FLANGE STYLE:

- S - STANDARD FLANGE (SEE SHEET 3)

GROUNDING OPTION:

- 0 - NO GROUNDING (INTERNAL GROUNDING NOT PROVIDED ON MICRO MINIATURE BACKSHELLS)

ENTRY SIZE:

- 02 - 11 (SEE SHEET 4)

MAIN BODY HEIGHT IN mm:

MAXIMUM HEIGHT = 60mm; MINIMUM HEIGHT (ENTRY POSITION 'U') = 20mm; INCREMENTS OF 5mm.

MAIN BODY HEIGHT FOR ENTRY POSITION 'E' AND 'F' IS DEFINED IN ENTRY SIZE TABLE 1 AND 2; NOT AVAILABLE IN VARIABLE MAIN BODY HEIGHTS

MATERIAL:F

PLEASE REFER TO SS0076

PLATING/FINISH:

PLEASE REFER TO SS0076

HARDWARE OPTION:

- O, S, H, E, F (SEE SHEET 6)


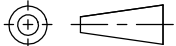
RELEASED FOR PUBLICATION

ALL RIGHTS RESERVED.

THIS DRAWING IS UNPUBLISHED.

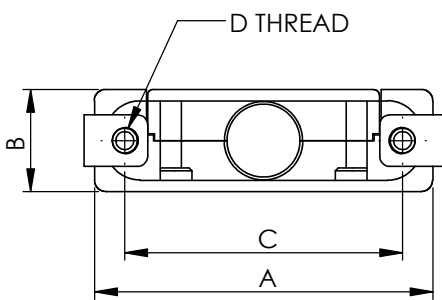
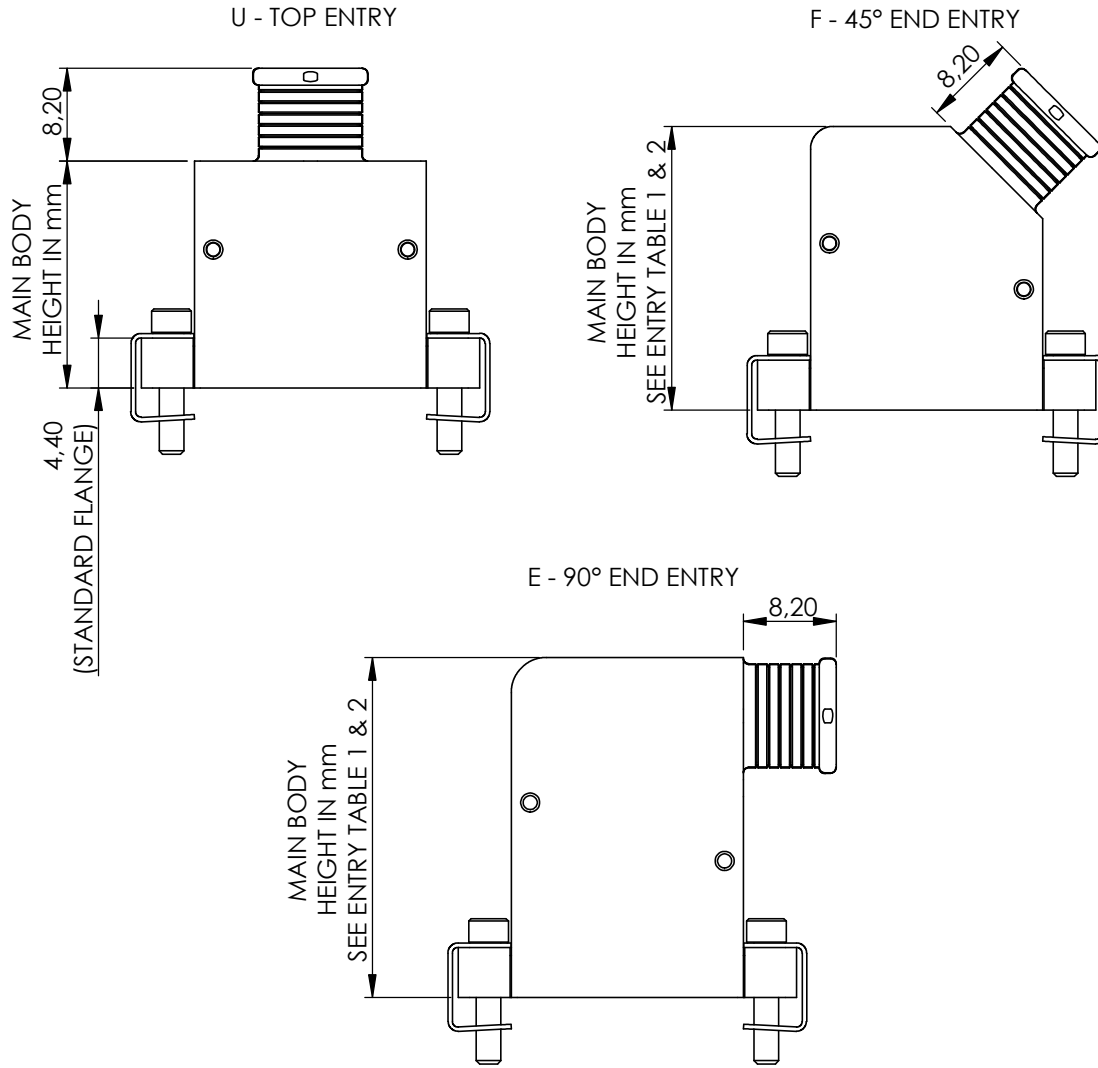
COPYRIGHT 20 BY



DIMENSIONS: <b>MILLIMETERS</b>	DWN: D. WRIGLEY	09/08/2019	MATERIAL:	FINISH:				
	CHK: R. STYLES	13/08/2019	 <b>TE Connectivity</b>					
TOLERANCES UNLESS OTHERWISE SPECIFIED:	APVD: M. PAUL	09/08/2019			PART NUMBER:	MBMMD (SPLIT) SERIES		
GENERAL TOL LINEAR ±0.25MM ANGULAR ±1°	PRODUCT SPEC:	-	NAME: MICRO BAND TERMINATION MICRO MINIATURE SPLIT BACKSHELL					
	APPLICATION SPEC:	-	SIZE	CAGE CODE	DRAWING NO	RESTRICTED TO		
	WEIGHT:	-	A4	U5792	C-P43737			
	CUSTOMER DRAWING			SCALE	2:1	SHEET	2 OF 5	REV

REVISIONS

ENTRY POSITION



SHELL SIZE	CONNECTOR REF.	A	B	C	D THREAD
A	09	19,68	9,00	14,35	2-56 UNC - 2A
B	15	23,50	9,00	18,16	
C	21	27,30	9,00	21,97	
D	25	29,84	9,00	24,51	
E	31	33,66	9,00	28,32	
F	37	37,46	9,00	32,13	
G	51	36,20	10,00	30,86	
H	100	54,86	11,00	45,72	4-40 UNC - 2A

RELEASED FOR PUBLICATION

ALL RIGHTS RESERVED.

THIS DRAWING IS UNPUBLISHED.

BY COPYRIGHT 20

DIMENSIONS: MILLIMETERS	DWN: D. WRIGLEY 09/08/2019	MATERIAL:	FINISH:
	CHK: R. STYLES 13/08/2019	<b>STE</b> TE Connectivity	
TOLERANCES UNLESS OTHERWISE SPECIFIED:  GENERAL TOL LINEAR $\pm 0,25$ MM ANGULAR $\pm 1^\circ$	APVD: M. PAUL 09/08/2019	PART NUMBER: MBMMD (SPLIT) SERIES	
	PRODUCT SPEC: -	NAME: MICRO BAND TERMINATION MICRO MINIATURE SPLIT BACKSHELL	
APPLICATION SPEC: -	WEIGHT:	SIZE: A4	CAGE CODE: U5792
	CUSTOMER DRAWING	DRAWING NO: C-P43737	RESTRICTED TO:
		SCALE: 1.5:1	SHEET: 3 OF 5

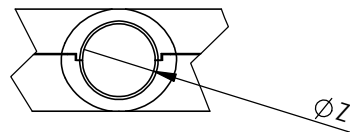
REVISIONS

AVAILABLE ENTRY SIZES

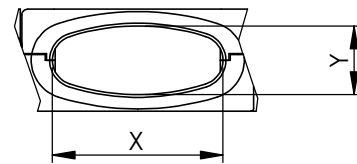
SHELL SIZE	CONNECTOR REF.	U - TOP ENTRY		F - 45° END ENTRY		E - 90° END ENTRY	
		CIRCULAR	ELLIPTICAL	CIRCULAR	ELLIPTICAL	CIRCULAR	ELLIPTICAL
A	09	02 - 04	NA	02 - 04	NA	02 - 04	05
B	15	02 - 04	05	02 - 04	05	02 - 04	05 - 06
C	21	02 - 04	05 - 06	02 - 04	05 - 06	02 - 04	05 - 07
D	25	02 - 04	05 - 06	02 - 04	05 - 06	02 - 04	05 - 08
E	31	02 - 04	05 - 07	02 - 04	05 - 07	02 - 04	05 - 08
F	37	02 - 04	05 - 08	02 - 04	05 - 08	02 - 04	05 - 08
G	51	02 - 05	06 - 08	02 - 05	06 - 08	02 - 05	06 - 08
H	100	02 - 05	06 - 11	02 - 05	06 - 11	02 - 05	06 - 11

ENTRY SIZE

CIRCULAR ENTRY



ELLIPTICAL ENTRY



ENTRY SIZE TABLE 1 - CIRCULAR ENTRY ONLY

ENTRY SIZE (CIRCULAR)	DIA Z MIN	U - TOP ENTRY MINIMUM MAIN BODY HEIGHT IN mm	F - 45° END ENTRY MAIN BODY HEIGHT IN mm	E - 90° END ENTRY MAIN BODY HEIGHT IN mm
			STANDARD FLANGE	STANDARD FLANGE
02	3,18	20,0	25,0	25,0
03	4,77	20,0	25,0	30,0
04	6,35	20,0	25,0	30,0
05	7,93	20,0	30,0	30,0

ENTRY SIZE TABLE 2 - ELLIPTICAL ENTRY ONLY

ENTRY SIZE (ELLIPTICAL)	X MIN	Y MIN	U - TOP ENTRY MINIMUM MAIN BODY HEIGHT IN mm	F - 45° END ENTRY MAIN BODY HEIGHT IN mm	E - 90° END ENTRY MAIN BODY HEIGHT IN mm
				STANDARD FLANGE	STANDARD FLANGE
05	10,70	6,00	20,0	30,0	35,0
06	15,00	6,00	20,0	30,0	40,0
07	20,00	6,00	20,0	35,0	45,0
08	25,00	6,00	20,0	40,0	50,0
08*	23,50	6,50	20,0	40,0	50,0
09	25,00	8,00	20,0	40,0	50,0
10	31,00	8,00	20,0	45,0	55,0
11	36,00	8,00	20,0	45,0	60,0

\* - ENTRY SIZE DIMENSIONS APPLY TO SHELL SIZES G AND H ONLY

RELEASED FOR PUBLICATION

ALL RIGHTS RESERVED.

THIS DRAWING IS UNPUBLISHED.

BY COPYRIGHT 20

DIMENSIONS: MILLIMETERS

DWN: D. WRIGLEY 09/08/2019

MATERIAL:

FINISH:

TOLERANCES UNLESS OTHERWISE SPECIFIED:

CHK: R. STYLES 13/08/2019



APVD: M. PAUL 09/08/2019

PART NUMBER:

MBMMD (SPLIT) SERIES

GENERAL TOL  
LINEAR ±0,25MM  
ANGULAR ±1°

PRODUCT SPEC:

NAME:

MICRO BAND TERMINATION MICRO MINIATURE SPLIT BACKSHELL

APPLICATION SPEC:

SIZE

CAGE CODE

DRAWING NO

RESTRICTED TO

WEIGHT:

A4

U5792

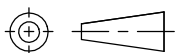
C=P43737

CUSTOMER DRAWING

SCALE 1.5:1

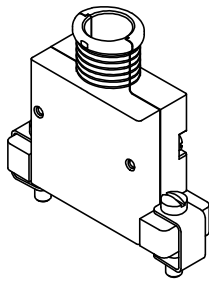
SHEET 4 OF 5

REV AB

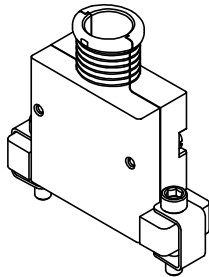


REVISIONS

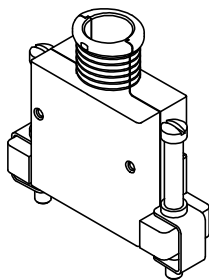
# HARDWARE OPTIONS



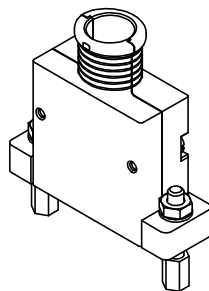
HARDWARE OPTION CODE: S  
 SLOTTED HEAD JACKSCREW RETAINED WITH 'OVER-END' CLIP  
 MATERIAL: STAINLESS STEEL, PASSIVATE FINISH  
 NOT RECOMMENDED FOR USE WITH ENTRY POSITIONS F AND E



HARDWARE OPTION CODE: H  
 HEX DRIVE SOCKET HEAD JACKSCREW RETAINED WITH 'OVER-END' CLIP  
 MATERIAL: STAINLESS STEEL, PASSIVATE FINISH



HARDWARE OPTION CODE: E  
 EXTENDED SLOTTED HEAD JACKSCREW RETAINED WITH 'OVER-END' CLIP  
 MATERIAL: STAINLESS STEEL, PASSIVATE FINISH  
 NOT AVAILABLE FOR ENTRY POSITIONS E AND F



HARDWARE OPTION CODE: F  
 FEMALE THREAD JACKPOST  
 MATERIAL: STAINLESS STEEL, PASSIVATE FINISH


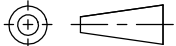
HARDWARE OPTION CODE: 0 (ZERO)  
 BACKSHELL SUPPLIED WITHOUT HARDWARE

RELEASED FOR PUBLICATION

ALL RIGHTS RESERVED.

THIS DRAWING IS UNPUBLISHED.

© COPYRIGHT 20 BY

DIMENSIONS: MILLIMETERS	DWN: D. WRIGLEY	09/08/2019	MATERIAL:	FINISH:			
	CHK: R. STYLES	13/08/2019	 TE Connectivity				
TOLERANCES UNLESS OTHERWISE SPECIFIED:	APVD: M. PAUL	09/08/2019			PART NUMBER:	MBMMD (SPLIT) SERIES	
GENERAL TOL LINEAR $\pm 0,25$ MM ANGULAR $\pm 1^\circ$	PRODUCT SPEC:	-	NAME: MICRO BAND TERMINATION MICRO MINIATURE SPLIT BACKSHELL				
	APPLICATION SPEC:	-	SIZE	CAGE CODE	DRAWING NO	RESTRICTED TO	
	WEIGHT:	-	A4	U5792	C-P43737		
	CUSTOMER DRAWING	SCALE		1:1	SHEET	5 OF 5	REV