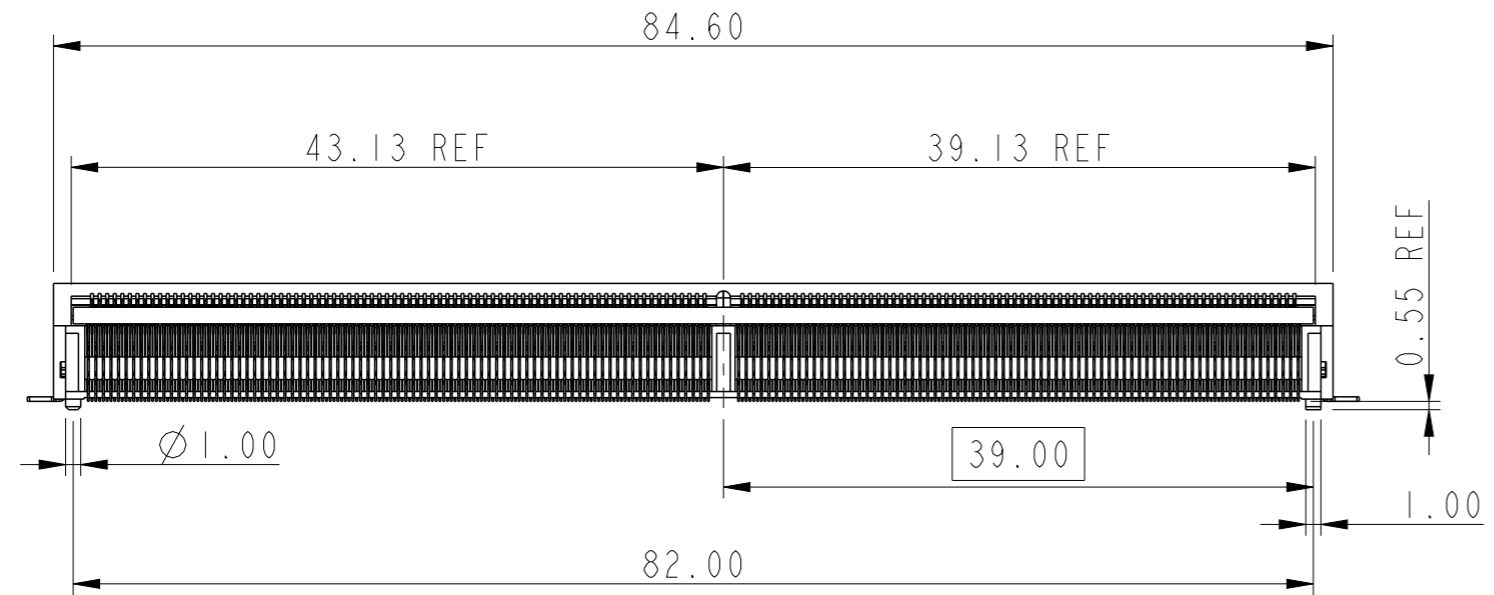
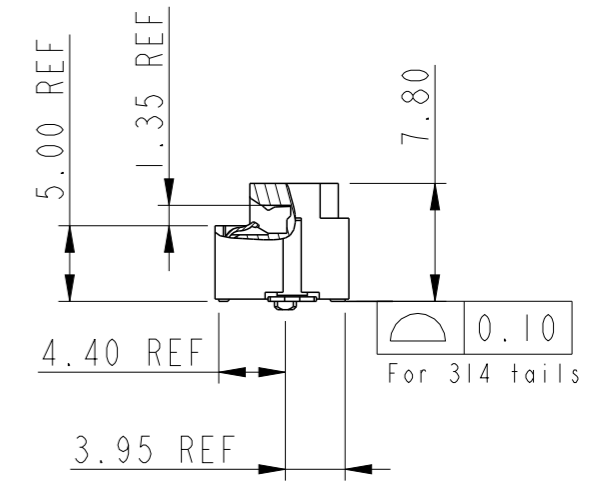
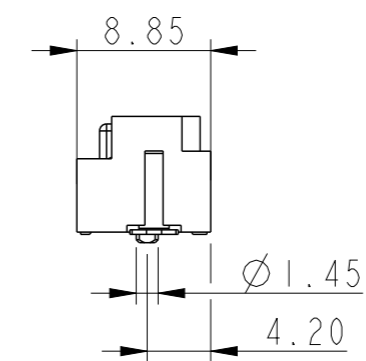


RECOMMENDED CARD INSERTION:
 1: INSERT CARD WITH 30° ANGLE
 2: ROTATE CARD TO HORIZONTAL
 3: WITHDRAW CARD WITH 25° ANGLE

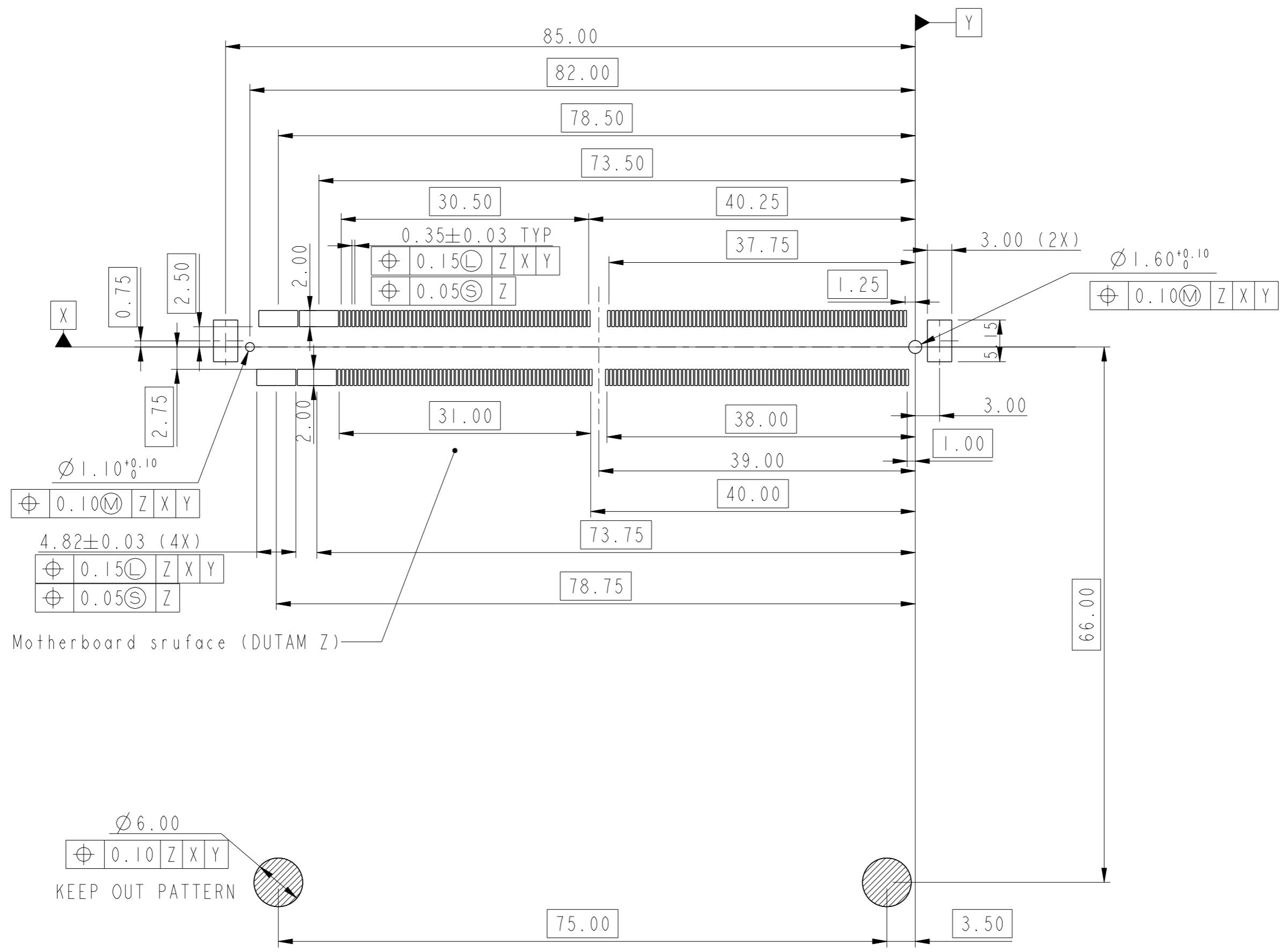


SCALE 2:1



PRELIMINARY

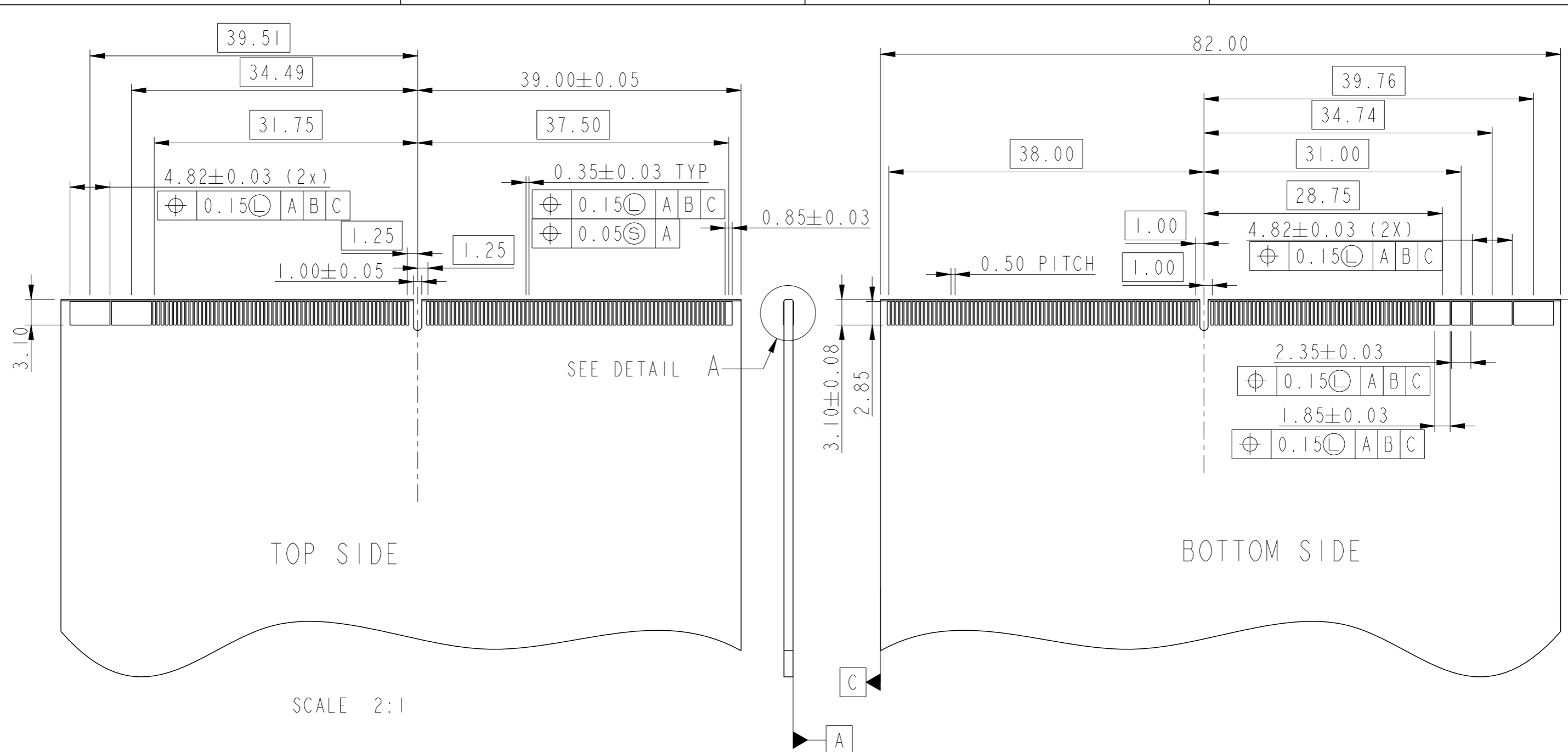
spec ref	-	dr	Zhen-Hua Liu	2020/10/16	projection	mm	size	A3	scale	1:1
tolerance std	ISO 406 ISO 1101	eng	-	2021/01/07			ecn no	-	rel level	Preliminary
TOLERANCES UNLESS OTHERWISE SPECIFIED		chr	-	-						
surface	linear	0.X	±0.3	Amphenol FCI	title MXM 3.0 Connector RA SMT	product family -	dwg no 10151114	rev 1	cat. no. -	Product - Customer Drw
		0.XX	±0.20							
	angular	0°	±2°							
sheet 1 of 4										



RECOMMENDED PCB LAYOUT

PRELIMINARY

spec ref	-	dr	Zhen-Hua Liu	2020/10/16	projection	mm	size	A3	scale	1:1
tolerance std	ISO 406 ISO 1101	eng	-	2021/01/07			ecn no	-		
	TOLERANCES UNLESS OTHERWISE SPECIFIED	chr	-	-	product family	-	rel level	Preliminary		
surface	linear	appr	-	-	Amphenol FCI		title	MXM 3.0 Connector	dwg no	10151114
	angular					RA SMT	rev	1		
ISO 1302	0.X ±0.3 0.XX ±0.20 0.XXX ±0.10 0° ±2°	cat. no.	-	Product - Customer Drw	sheet 2 of 4					

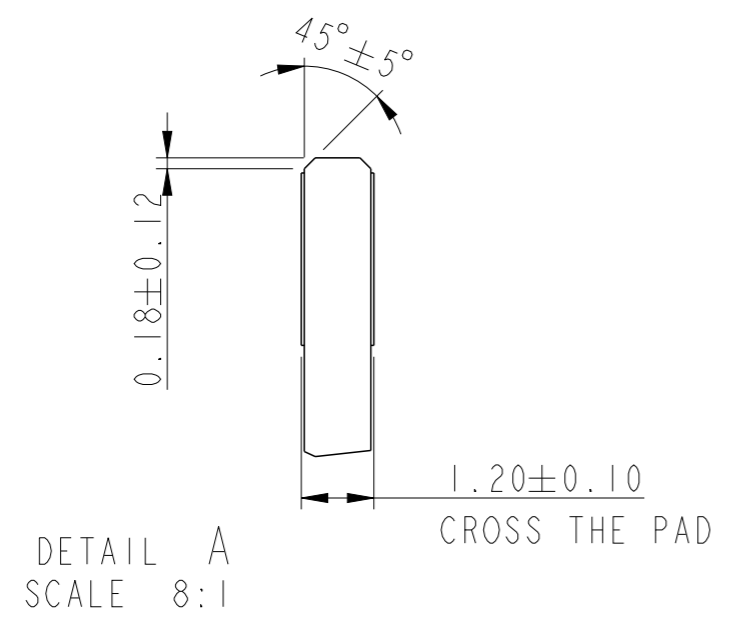


TOP SIDE

BOTTOM SIDE

SCALE 2:1

RECOMMENDED MODULE CARD LAYOUT



DETAIL A
SCALE 8:1

PRELIMINARY

spec ref	-	dr	Zhen-Hua Liu	2020/10/16	projection	mm	size	A3	scale	1:1	
tolerance std	ISO 406 ISO 1101	eng	-	2021/01/07		←→	ecn no	-	rel level	Preliminary	
TOLERANCES UNLESS OTHERWISE SPECIFIED		chr	-	-	product family	-	rel level	Preliminary			
surface	linear	0.X	±0.3	Amphenol FCI	MXM 3.0 Connector			dwg no	10151114		
		0.XX	±0.20		RA SMT				rev	1	
		0.XXX	±0.10		cat. no.					Product - Customer Drw	
	angular	0°	±2°								

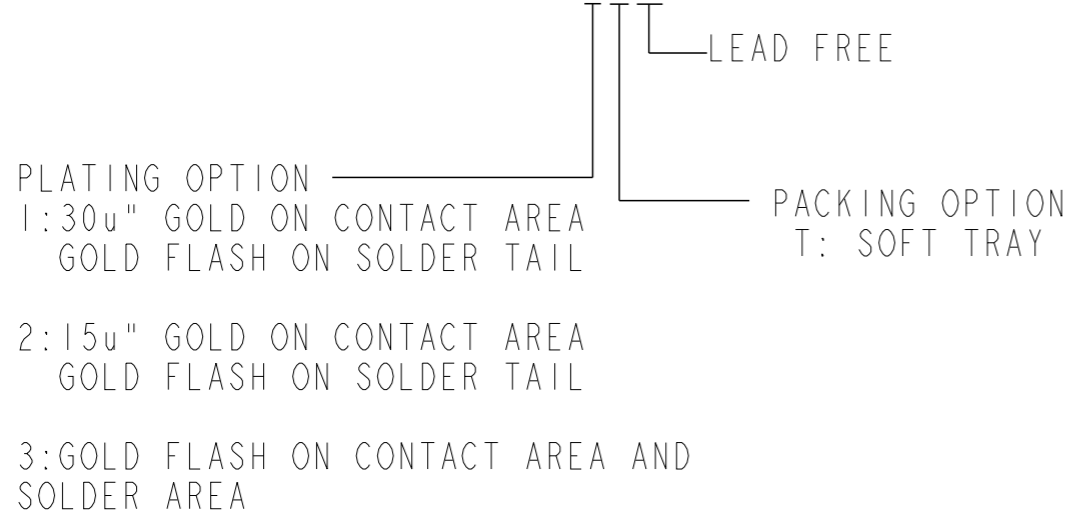
NOTES:

1. MATERIAL:
HOUSING: HIGH TEMPERATURE RESIN, HF, BLACK UL 94V-0
TERMINAL: COPPER ALLOY
HOLD DWON: STAINLESS STEEL
2. PRODUCT SPEC: GS-12-1531
3. FINISH:
NICKLE UNDERPLATING
CONTACT AREA: Au PLATING or GXT PLATING
SOLDER TAIL: GOLD FLASH PLATING
4. THE HOUSING WILL WITHSTAND EXPOSURE TO 260 °C PEAK TEMPERATURE FOR 10 SECONDS
IN A CONVECTION, INFRA-RED OR VAPOR PHASE REFLOW OVEN.

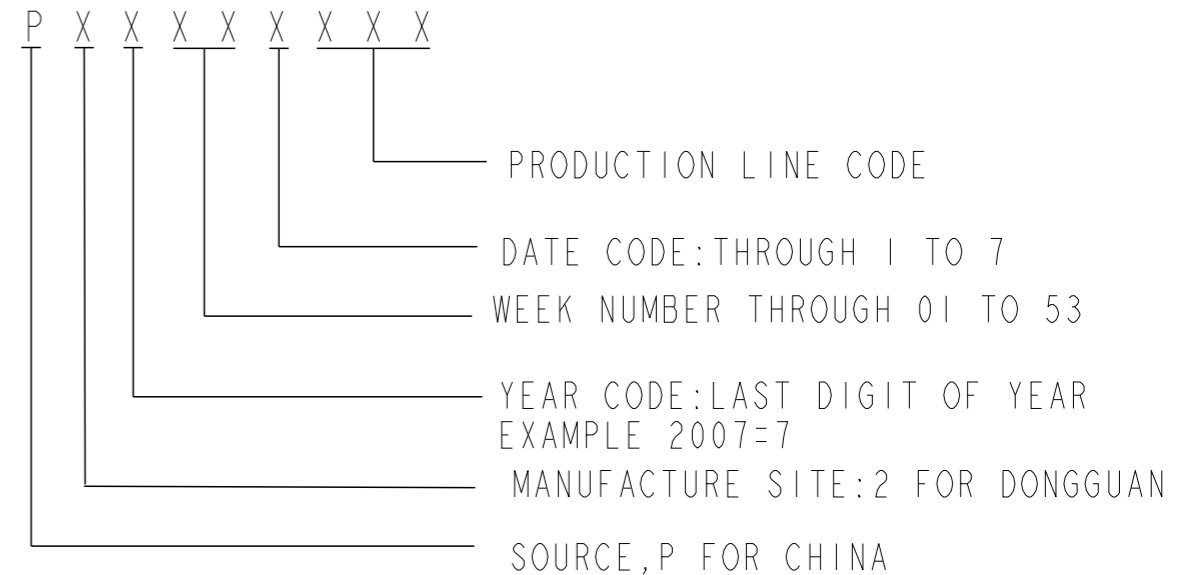
△ 5. DATE CODE (SSYYWWD) TO BE LASER MARKED ON THIS SURFACE TEXT TO BE AT LEAST 0.8MM TALL.

PRODUCT NUMBER CODE

10151114-00XXLF



DATE CODE INFORMATION



PRELIMINARY

spec ref	-	dr	Zhen-Hua Liu	2020/10/16	projection		mm	size	A3	scale	1:1
tolerance std	ISO 406 ISO 1101	eng	-	2021/01/07	product family	-	ecn no	-	rel level	Preliminary	
surface	linear	0.X	±0.3	Amphenol FCi	MXM 3.0 Connector	dwg no	10151114	rev	1		
		0.XX	±0.20		RA SMT						
	angular	0°	±2°		cat. no.	-	Product - Customer Drw	sheet 4 of 4			