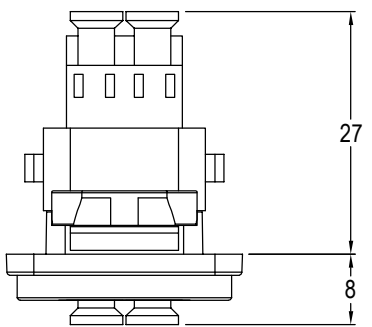
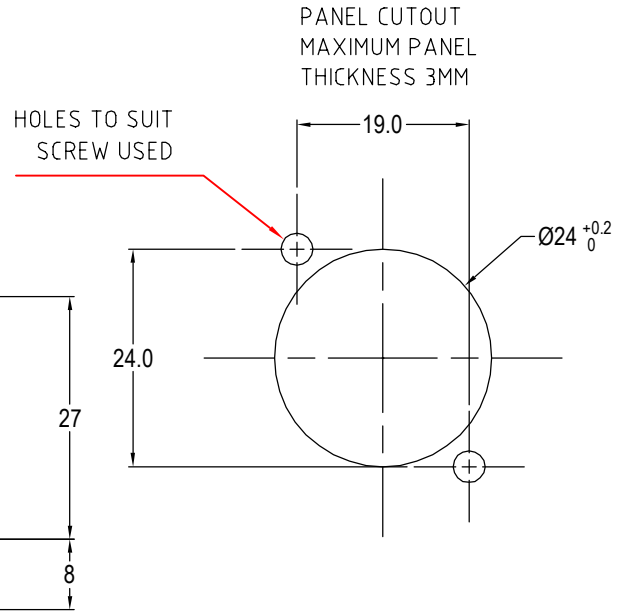


ISS.	AMEND	DATE
1	ISSUED	12/02/2015
2	VIEW CORRECTED	29/09/2016



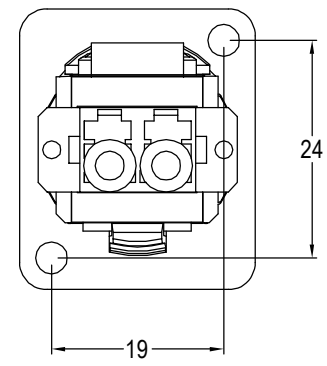
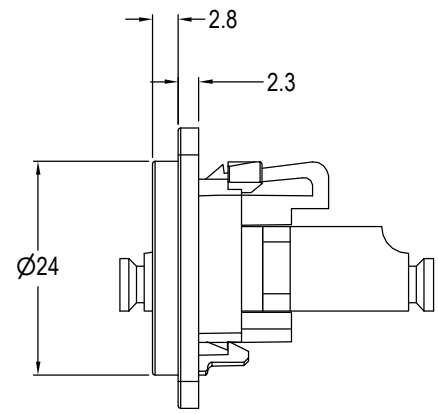
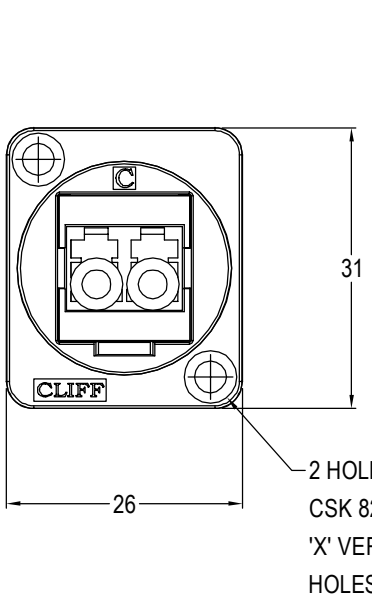
Material:

1. Coupler Body: PEI
2. Sleeve: Ceramic
3. Dust Cover: PE
4. Insert: ABS/PC
5. Frame: Polyamide
6. UL94V-2

Notes:

1. Insertion Loss: $\leq 0.3\text{dB}$

VARIANTS	
PART NO.	HOLE DETAILS
CP30213	HOLE $\varnothing 3.50$ X CSK 82° X $\varnothing 5.85$
CP30213X	PLAIN HOLE $\varnothing 2.50$



RoHS COMPLIANT
TOLERANCE NO DEC. PLACE \pm 1 DEC. PLACE \pm 2 DEC. PLACE \pm HOLE $\varnothing \pm$ ANGLES \pm UNLESS OTHERWISE STATED
DO NOT SCALE

Cliff Electronic Components Ltd.

76 Holmethorpe Avenue, Holmethorpe Industrial Estate,
Redhill, Surrey, RH1 2PF, England, UK
Tel: 01737-771375 Fax: 01737-766012 Website: www.cliffuk.co.uk

DIMENSIONS IN MILLIMETERS UNLESS OTHERWISE STATED. WORK TO DIMENSIONS. REMOVE ALL BURRS. IF IN DOUBT ASK.

3rd ANGLE PROJECTION:

MATERIAL: See Notes

TITLE: FEED THROUGH LC Duplex SM adaptor

FINISH: See Notes

DRAWN: D.P.J.

APPROVED: D.P.J.

DRWG. No. **CP30213**

FORM: A4DRWGH