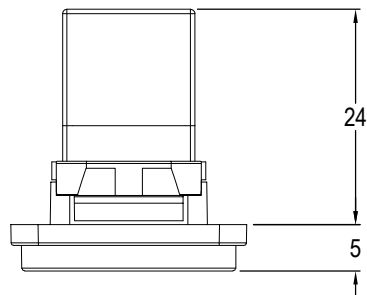
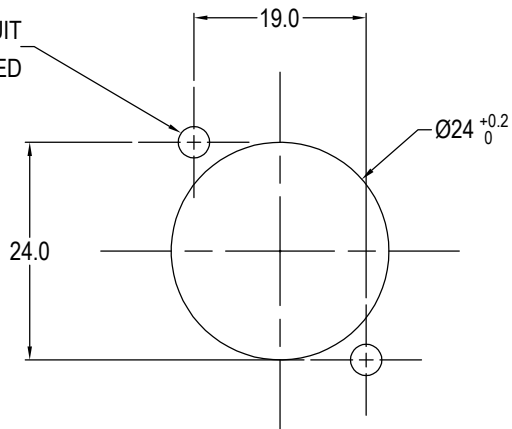


ISS.	AMEND	DATE
1	ISSUED	08/02/17
2	MATERIAL UPDATED	25/04/18
3	ADD M3 VARIANT	25/05/18

PANEL CUTOUT  
MAXIMUM PANEL  
THICKNESS 3mm

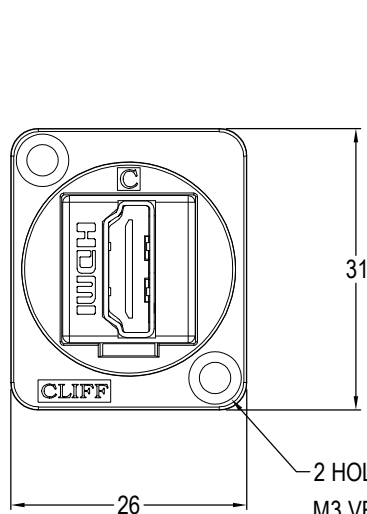
HOLES TO SUIT  
SCREW USED



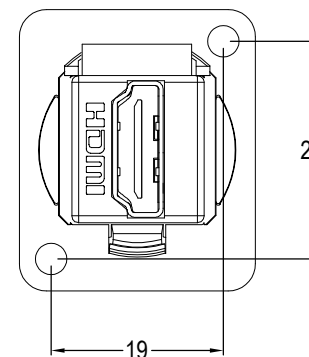
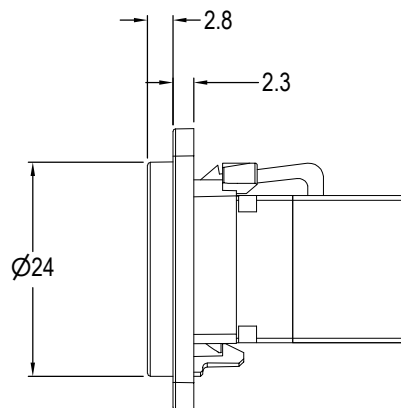
VARIANTS	
PART No.	HOLE DETAILS
CP30200GM	HOLE $\varnothing 3.50$ x CSK $82^\circ$ x $\varnothing 5.85$
CP30200GM3	M3 HOLES

Material:

1. Insert: ABS UL94 HB
2. Frame: Diecast, Nickel plated
3. Shell: Gold plated
4. Contacts: Gold Plated



2 HOLES:  $\varnothing 3.5$ mm CSK  $82^\circ$  x  $\varnothing 5.85$   
M3 VERSION HAS M3 THREAD HOLES.



**RoHS**  
COMPLIANT

TOLERANCE  
NO DEC. PLACE  $\pm$   
1 DEC. PLACE  $\pm$   
2 DEC. PLACE  $\pm$   
HOLE  $\varnothing$   $\pm$   
ANGLES  $\pm$   
UNLESS  
OTHERWISE STATED

DO NOT SCALE

**Cliff Electronic Components Ltd.**

76 Holmethorpe Avenue, Holmethorpe Industrial Estate,  
Redhill, Surrey, RH1 2PF, England, UK  
Tel: 01737-771375 Fax: 01737-766012 Website: www.cliffuk.co.uk

THE CONTENTS OF THIS DOCUMENT MUST NOT BE COPIED OR DISCLOSED  
TO A 3rd PARTY WITHOUT WRITTEN PERMISSION OF CLIFF UK. © 2015

DIMENSIONS IN MILLIMETERS UNLESS OTHERWISE STATED. WORK TO DIMENSIONS. REMOVE ALL BURRS. IF IN DOUBT ASK.

3rd ANGLE PROJECTION:

MATERIAL: See Notes

FINISH: See Notes

DRAWN: D.P.J.

APPROVED: D.P.J.

TITLE: FT METAL HDMI A Female to HDMI A

DRWG. No. **CP30200GM**

FORM: A4DRWG+