

THIS DRAWING IS UNPUBLISHED. RELEASED FOR PUBLICATION
 © COPYRIGHT copyright.dBTe ALL RIGHTS RESERVED.

REVISIONS				
P	LTR	DESCRIPTION	DATE	APVD
A		RELEASED	08JAN2016	SC JK
A1		REVISED (ECR-17-003818)	16MAR2017	SC JK

PERFORMANCE DATA

PHSICAL DATA

Contact Arrangement : Main contacts
 Dimensions
 Weight (Nominal)

SPST-NO-DM (1 Form X)
 See Drawing
 0.9 lbs (410g)

Coil Information / Operate Voltage:
 Coil Resistance @ 20 C
 Operate Voltage @ 20 C
 Release Voltage @ 20 C
 Minimum Hold Current at Temperature
 (Must operate @ 12V for 100ms before
 reducing to minimum holding current)

3.14 ohms +10%/-5%
 6.5 Vdc (Max)
 0.5 Vdc to 1.5 Vdc (Range)
 650mA

Operate and Release Time
 Operate Time Max
 Operate Bounce Max
 Release Time Max

20ms
 7ms
 12ms

Operate and Release Time
 Shock 11ms 1/2 sine (operating)
 Sine Vibration, 20G peak
 Operating Temperature Range

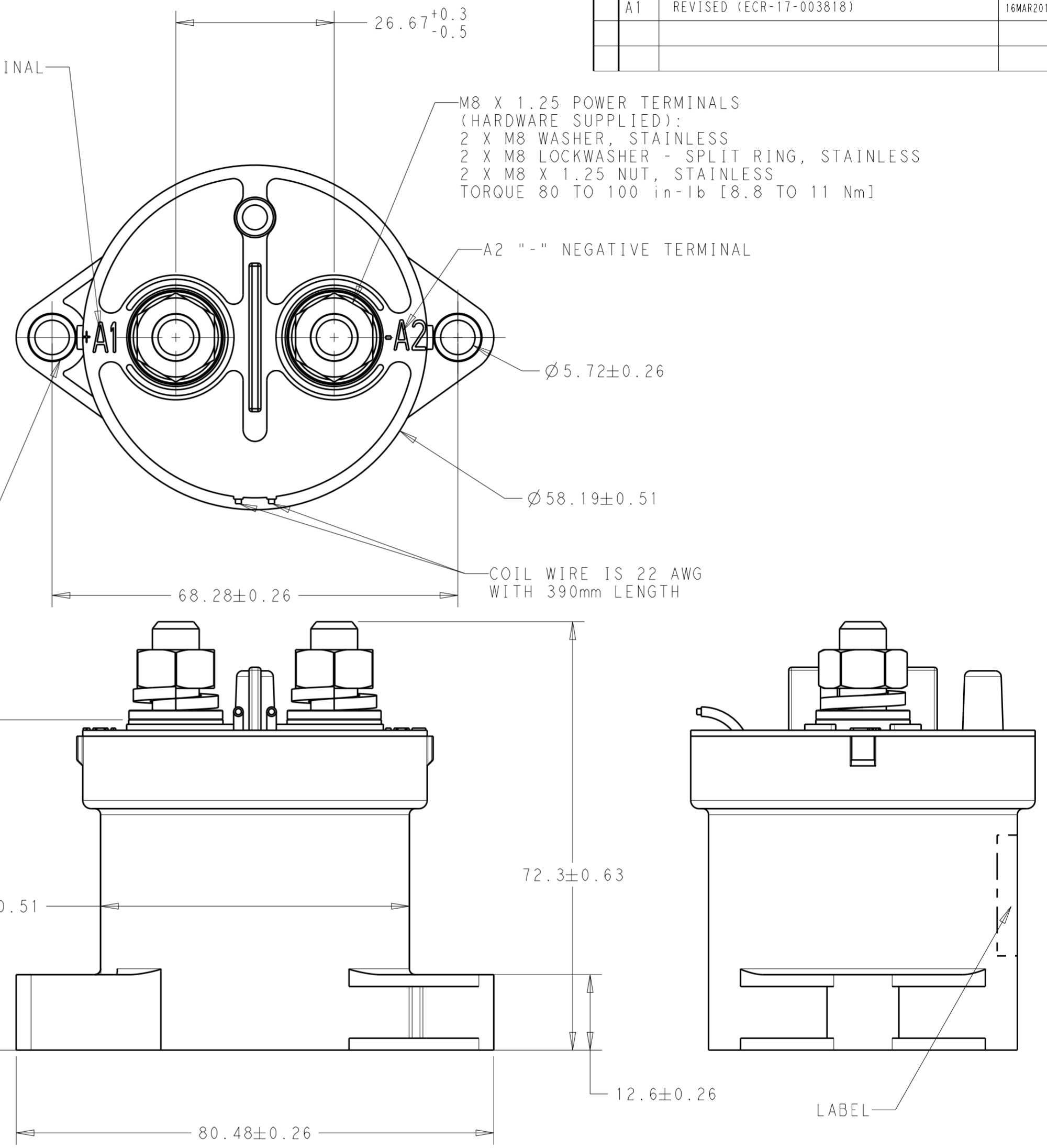
50G peak
 80 - 2,000 Hz
 -40 °C to +85 °C

A1 "+" POSITIVE TERMINAL

M8 X 1.25 POWER TERMINALS
 (HARDWARE SUPPLIED):
 2 X M8 WASHER, STAINLESS
 2 X M8 LOCKWASHER - SPLIT RING, STAINLESS
 2 X M8 X 1.25 NUT, STAINLESS
 TORQUE 80 TO 100 in-lb [8.8 TO 11 Nm]

A2 "-" NEGATIVE TERMINAL

MOUNTING HARDWARE (Not Supplied):
 2 X M5 BOLT
 2 X M5 LOCKWASHER
 2 X M5 NARROW WASHER
 TORQUE 15 TO 30 in-lb [1.7 to 3.3Nm]



1. TO AVOID OVERHEATING, THE COIL ABOVE SHOULD NOT BE LEFT ON AT FULL POWER (12V) FOR A LONG PERIOD OF TIME.
2. THE MINIMUM HOLD CURRENT OF 650mA (MENTIONED ABOVE) ONLY PRODUCES A T-RISE OF 23°C (MAX)
3. FOR ANY OTHER INFORMATION, PLEASE REFER TO THE EVC500 GENERAL CUSTOMER DATASHEET

2219561-1
 PART NUMBER

THIS DRAWING IS A CONTROLLED DOCUMENT.		DWN SC HWANG 08JAN2016	TE Connectivity	
		CHK SH JANG 08JAN2016		
		APVD JK KIM 08JAN2016	NAME RELAY EVC500	
DIMENSIONS: mm		TOLERANCES UNLESS OTHERWISE SPECIFIED:	PRODUCT SPEC -	
		0 PLC ±	APPLICATION SPEC -	
		1 PLC ±0.3	WEIGHT -	
		2 PLC ±0.13	SIZE A20779	
		3 PLC ±	CAGE CODE C-2219561	
		4 PLC ±	DRAWING NO -	
MATERIAL -		ANGLES ±	RESTRICTED TO -	
		FINISH -	SCALE 1:1 SHEET 1 OF 1 REV A1	
			CUSTOMER DRAWING	