

Customer Information Sheet

DRAWING No.: M58-280XX42R

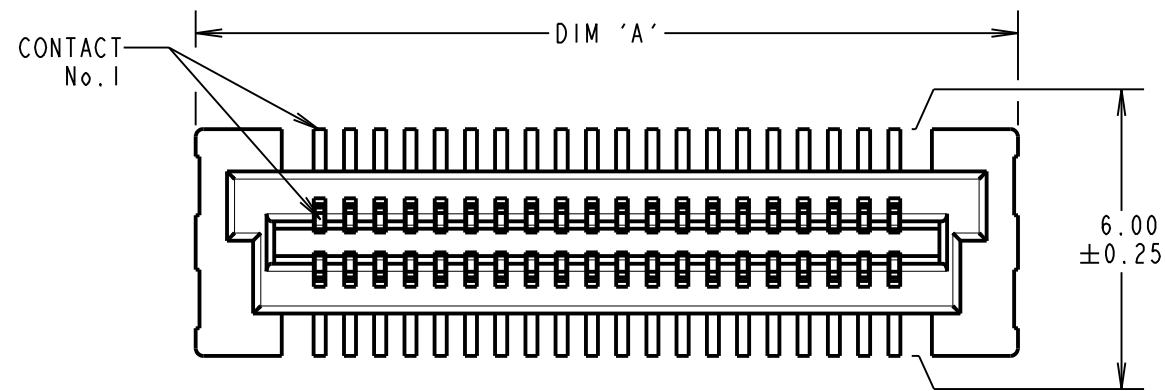
IF IN DOUBT - ASK

©

NOT TO SCALE

THIRD ANGLE PROJECTION

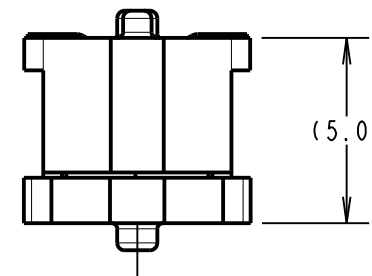
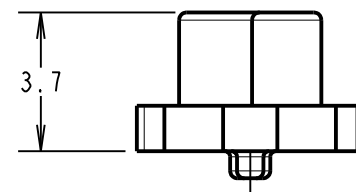
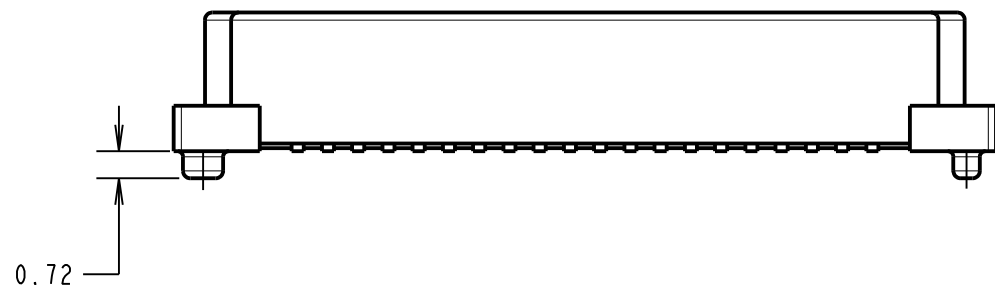
ALL DIMENSIONS IN mm



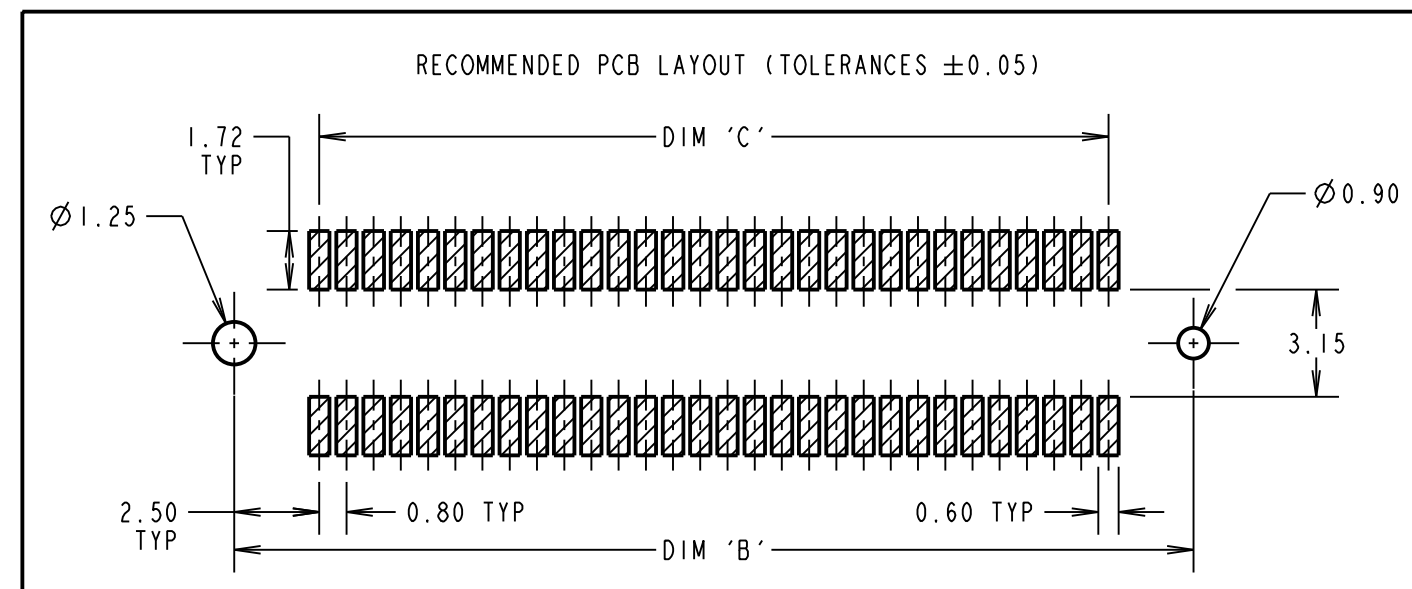
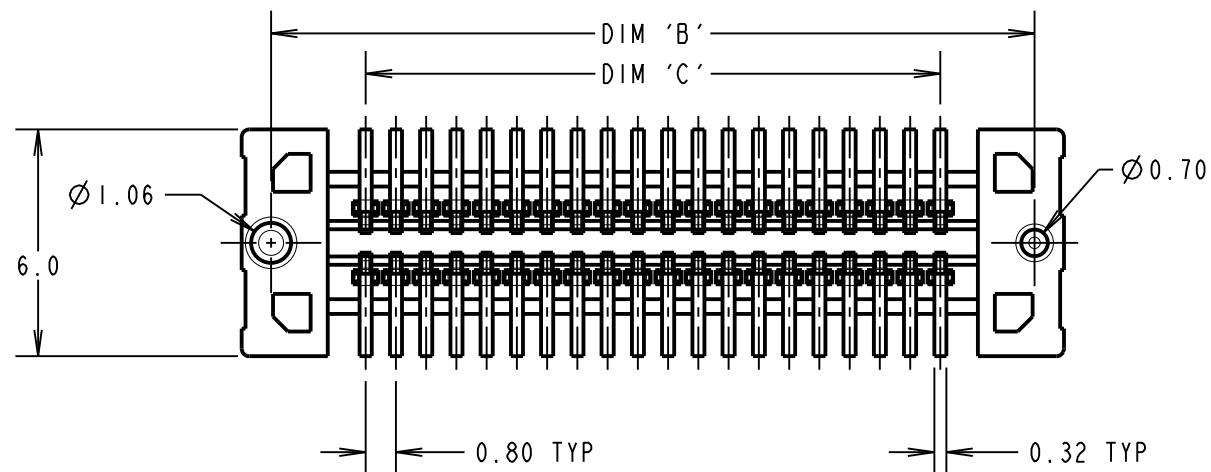
NOTES:

- FOR COMPLETE SPECIFICATION SEE COMPONENT SPECIFICATION C058XX (LATEST ISSUE).
- SEE SHEET 5 FOR TAPE AND REEL DETAILS.
- DRAWING SHOWS M58-2800442R.
- PCB LAYOUT SHOWING FOOTPRINT OF M58-2800642R.

MATED VIEW FOR STACK HEIGHT WHEN MATED WITH M58-380XX42R



| PART No. | DIMENSION | | | WEIGHT (g) |
|--------------|-----------|---------|---------|------------|
| | DIM 'A' | DIM 'B' | DIM 'C' | |
| M58-2800342R | 17.75 | 16.20 | 11.20 | 0.36 |
| M58-2800442R | 21.75 | 20.20 | 15.20 | 0.45 |
| M58-2800642R | 29.75 | 28.20 | 23.20 | 0.62 |
| M58-2800842R | 37.75 | 36.20 | 31.20 | 0.79 |
| M58-2801042R | 45.75 | 44.20 | 39.20 | 0.97 |
| M58-2801242R | 53.75 | 52.20 | 47.20 | 1.14 |



ORDER CODE:

M58-280XX42R

| No. OF CONTACTS: | |
|--------------------------|---------------------------|
| 03 = 30 CONTACTS (15+15) | 08 = 80 CONTACTS (40+40) |
| 04 = 40 CONTACTS (20+20) | 10 = 100 CONTACTS (50+50) |
| 06 = 60 CONTACTS (30+30) | 12 = 120 CONTACTS (60+60) |

HARWIN

www.harwin.com
technical@harwin.com

THIS DRAWING AND ANY INFORMATION OR DESCRIPTIVE MATTER SET OUT HEREON ARE CONFIDENTIAL AND COPYRIGHT PROPERTY OF THE HARWIN GROUP AND MUST NOT BE DISCLOSED, LOANED, COPIED OR USED FOR MANUFACTURING, TENDERING OR FOR ANY OTHER PURPOSE WITHOUT THEIR WRITTEN PERMISSION.

TOLERANCES

X. = ±1mm
X.X = ±0.50mm
X.XX = ±0.20mm
X.XXX = ±0.01mm
ANGLES = ±5°
UNLESS STATED

MATERIAL:

SEE ABOVE

FINISH:

SEE ABOVE

S/AREA:

mm²

TITLE:

FEMALE 0.8mm PITCH BOARD TO BOARD VERTICAL SMT

DRAWING NUMBER:

M58-280XX42R

| RA | ISS. | DATE | CN/CO |
|----------------------|------|----------|-------|
| 1 | | 15.09.21 | 30807 |
| APPROVED: R.PORTLOCK | | | |
| CHECKED: S.BENNETT | | | |
| DRAWN: R.ALEXANDER | | | |
| CUSTOMER REF.: | | | |
| ASSEMBLY DRG: | | | |

Customer Information Sheet

DRAWING No.:

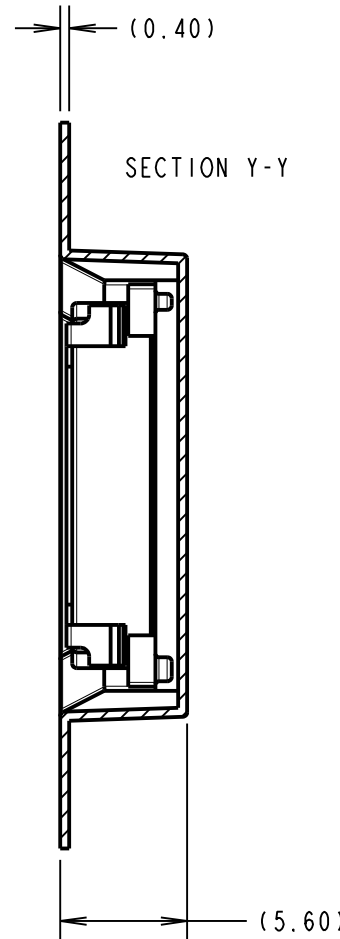
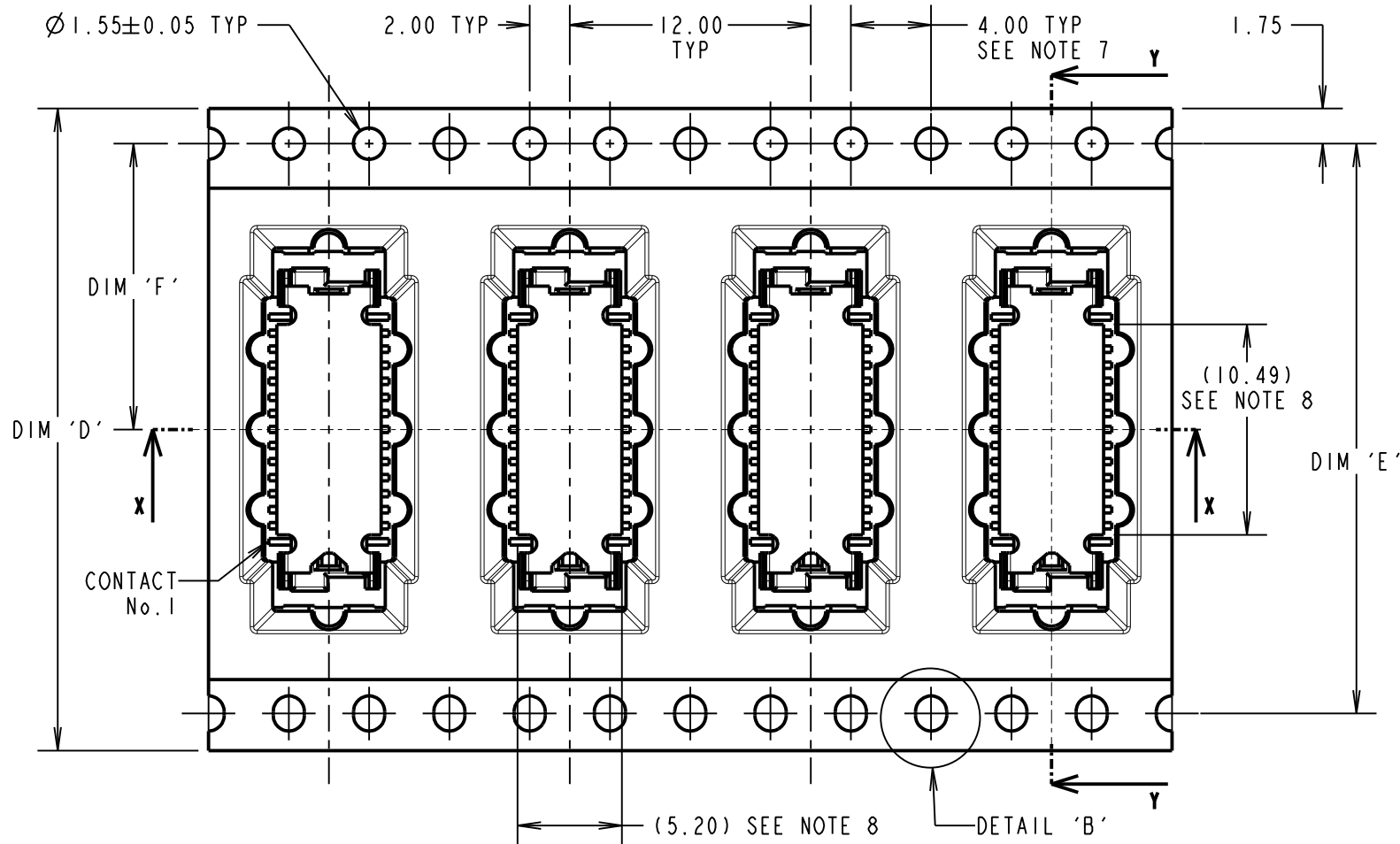
IF IN DOUBT - ASK

©

NOT TO SCALE

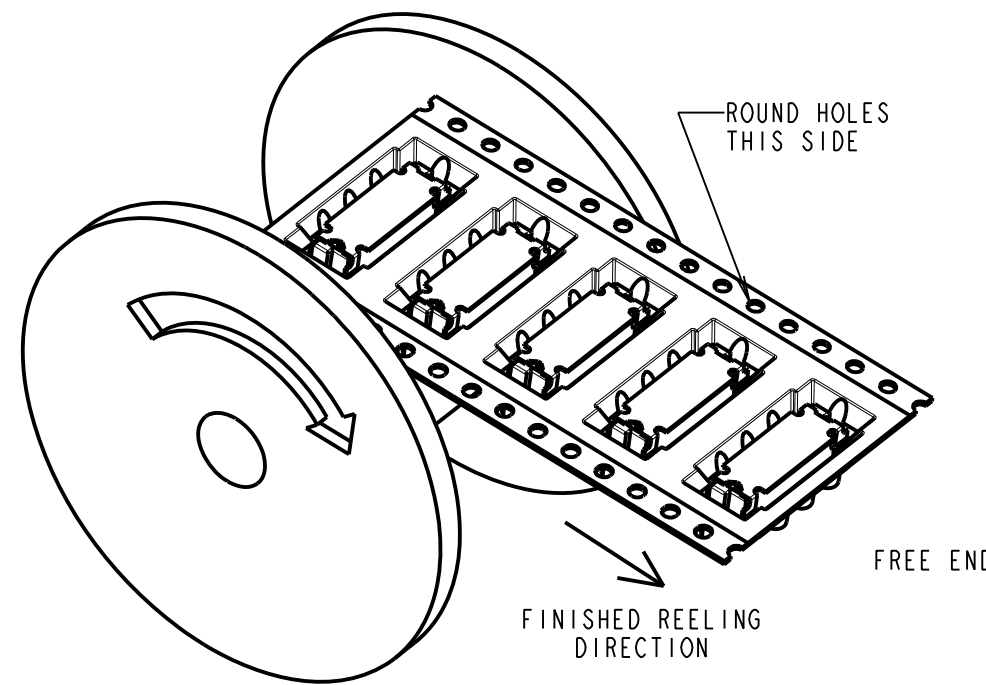
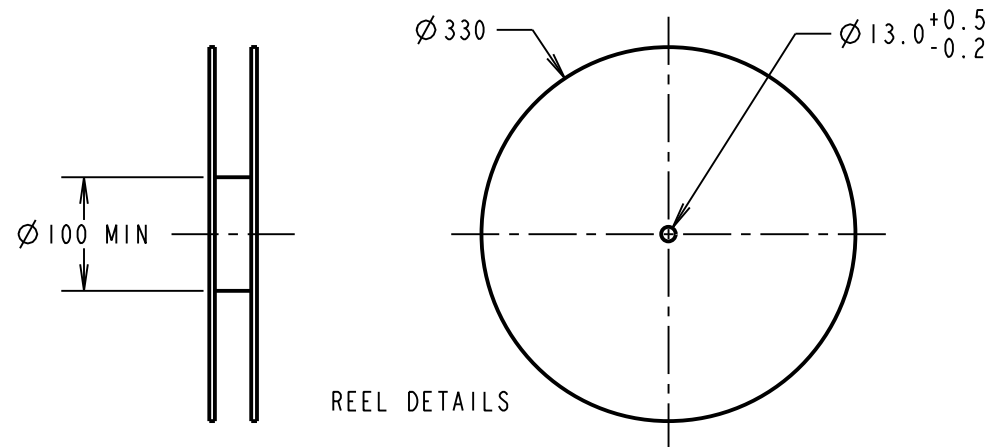
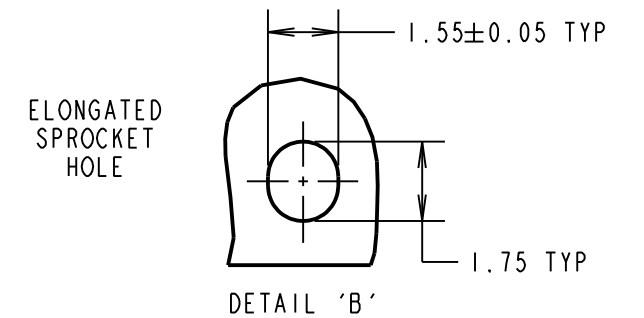
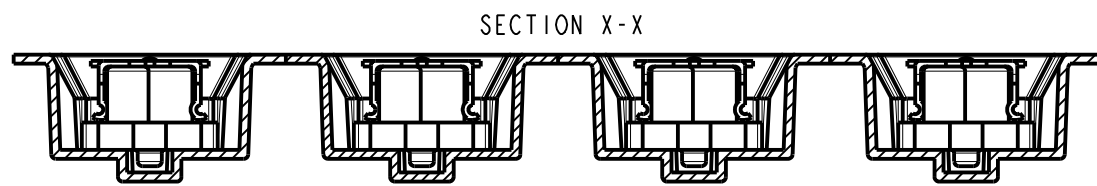
THIRD ANGLE PROJECTION

ALL DIMENSIONS IN mm



- NOTES:
5. TAPE AND REEL DRAWING SHOWS M58-2800442R.
 6. THIS PRODUCT IS TAPED AND REELED IN GENERAL ACCORDANCE WITH EIA-418 (ELECTRONICS INDUSTRY ASSOCIATION).
 7. CUMULATIVE TOLERANCE OVER 10 PITCHES = $\pm 0.20\text{mm}$.
 8. PICK AND PLACE CAP DIMENSIONS.

| PART No. | DIMENSION | | | PCS/REEL |
|--------------|-----------------------|---------|---------|----------|
| | DIM 'D' ± 0.30 | DIM 'E' | DIM 'F' | |
| M58-2800342R | 32.00 | 28.40 | 14.20 | 800 |
| M58-2800442R | 44.00 | 40.40 | 20.20 | 800 |
| M58-2800642R | 56.00 | 52.40 | 26.20 | 800 |
| M58-2800842R | 56.00 | 52.40 | 26.20 | 800 |
| M58-2801042R | 72.00 | 68.40 | 34.20 | 800 |
| M58-2801242R | 72.00 | 68.40 | 34.20 | 800 |



| | | | |
|----------------------|------|----------|-------|
| RA | I | 15.09.21 | 30807 |
| NAME | ISS. | DATE | CN/CO |
| APPROVED: R.PORTLOCK | | | |
| CHECKED: S.BENNETT | | | |
| DRAWN: R.ALEXANDER | | | |
| CUSTOMER REF.: | | | |
| ASSEMBLY DRG: | | | |

ORDER CODE:

M58-280XX42R

| | |
|--------------------------|---------------------------|
| No. OF CONTACTS: | |
| 03 = 30 CONTACTS (15+15) | 08 = 80 CONTACTS (40+40) |
| 04 = 40 CONTACTS (20+20) | 10 = 100 CONTACTS (50+50) |
| 06 = 60 CONTACTS (30+30) | 12 = 120 CONTACTS (60+60) |

HARWIN

www.harwin.com
technical@harwin.com

THIS DRAWING AND ANY INFORMATION OR DESCRIPTIVE MATTER SET OUT HEREON ARE CONFIDENTIAL AND COPYRIGHT PROPERTY OF THE HARWIN GROUP AND MUST NOT BE DISCLOSED, LOANED, COPIED OR USED FOR MANUFACTURING, TENDERING OR FOR ANY OTHER PURPOSE WITHOUT THEIR WRITTEN PERMISSION.

TOLERANCES

X. = $\pm 1\text{mm}$
X.X = $\pm 0.50\text{mm}$
X.XX = $\pm 0.20\text{mm}$
X.XXX = $\pm 0.01\text{mm}$
ANGLES = $\pm 5^\circ$
UNLESS STATED

MATERIAL:

SEE ABOVE

FINISH:

SEE ABOVE

S/AREA:

mm²

TITLE:

FEMALE 0.8mm PITCH BOARD TO BOARD VERTICAL SMT

DRAWING NUMBER:

M58-280XX42R

SHT
5 OF 5