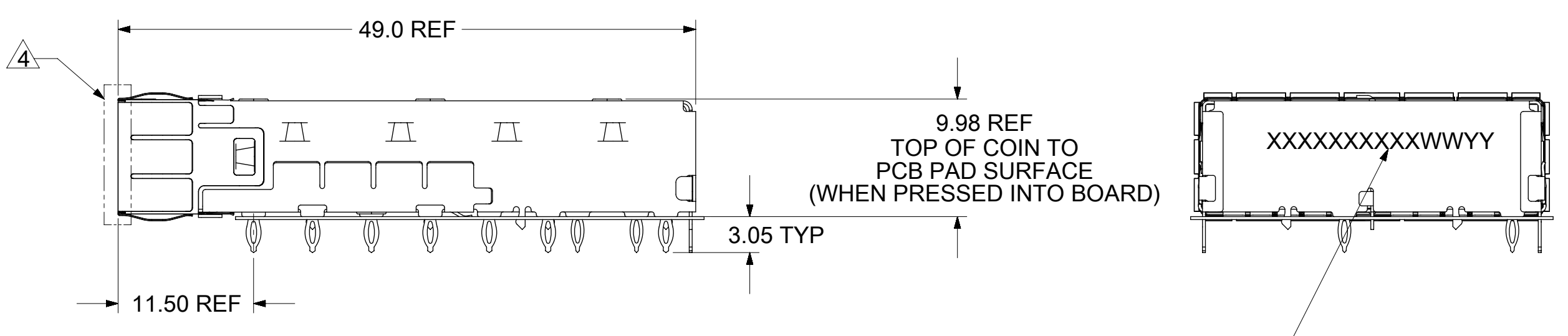
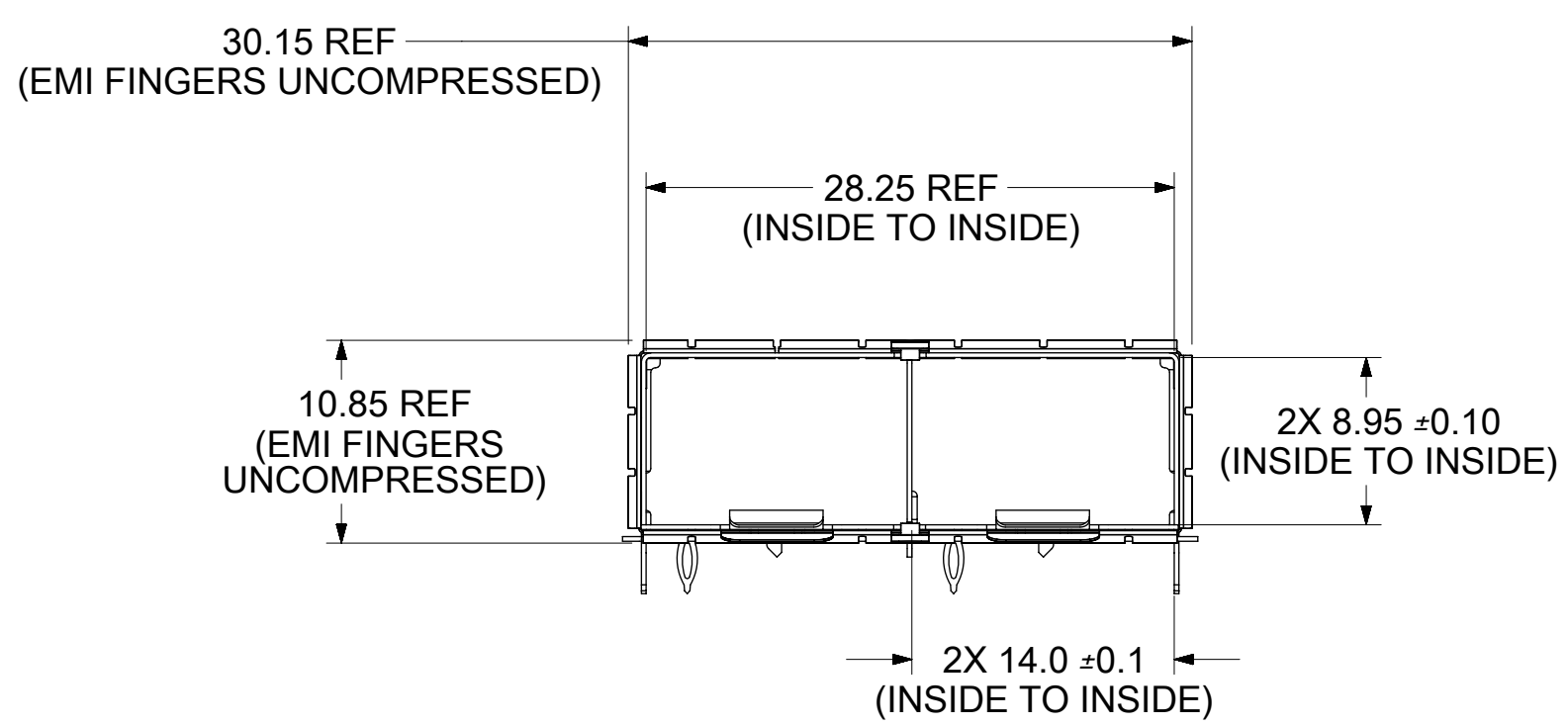
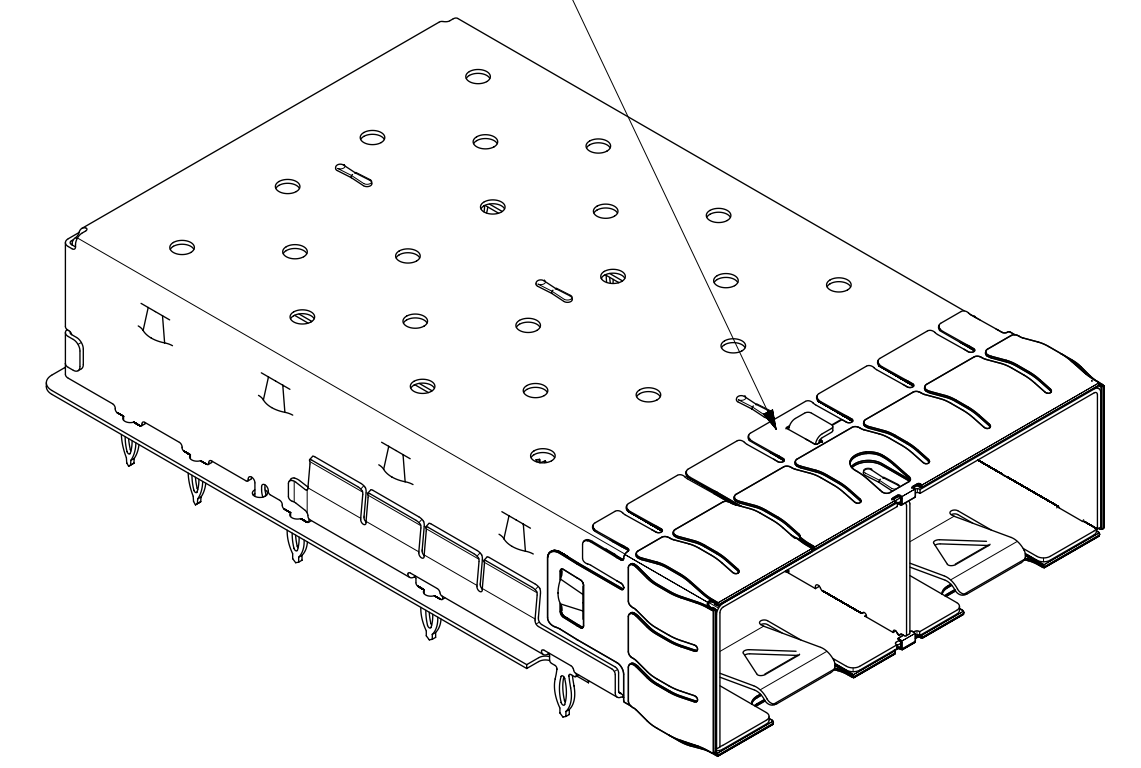


INNER WALL IS COINED OVER BASE AND COVER FOR EXTRA RIGIDITY



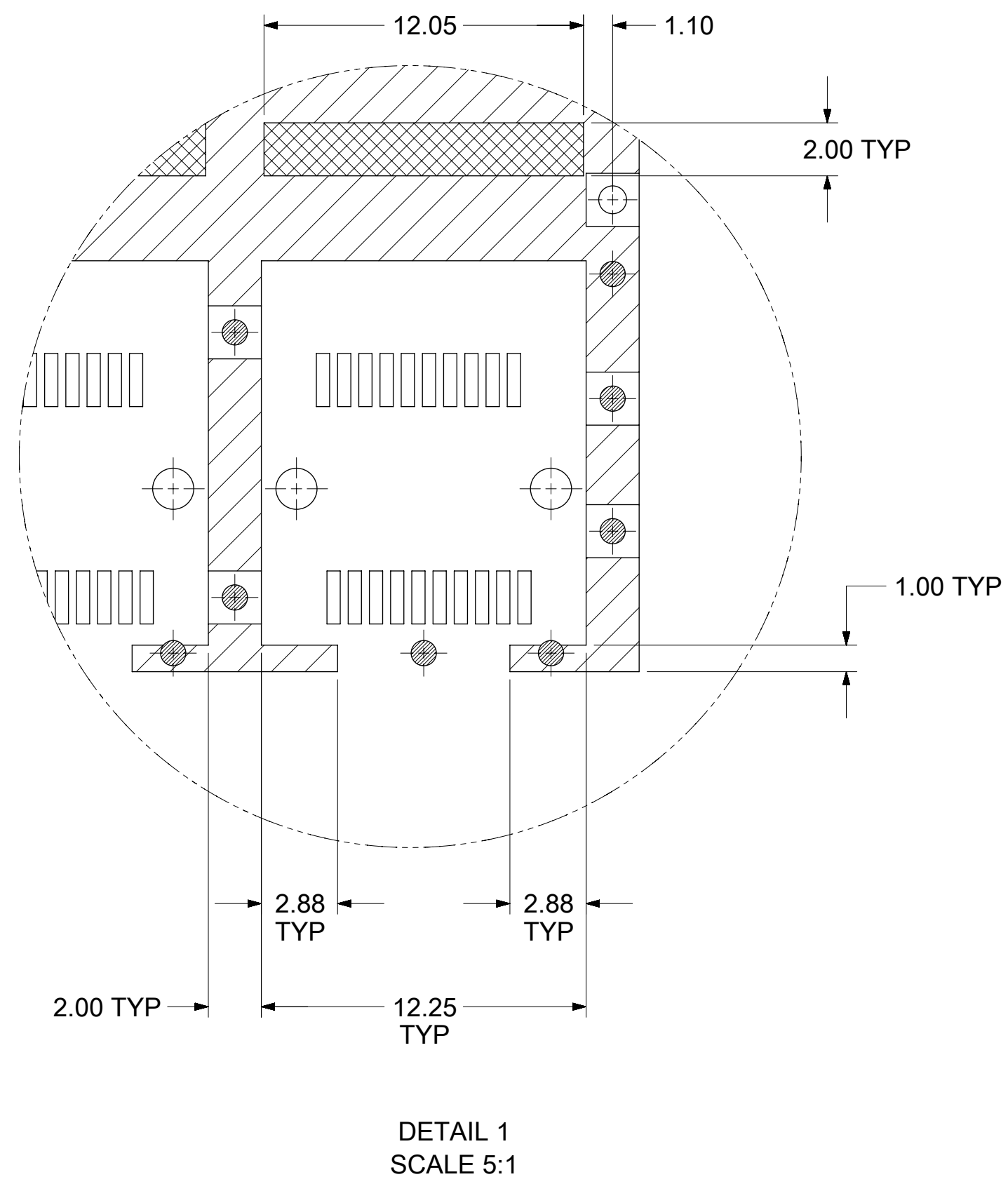
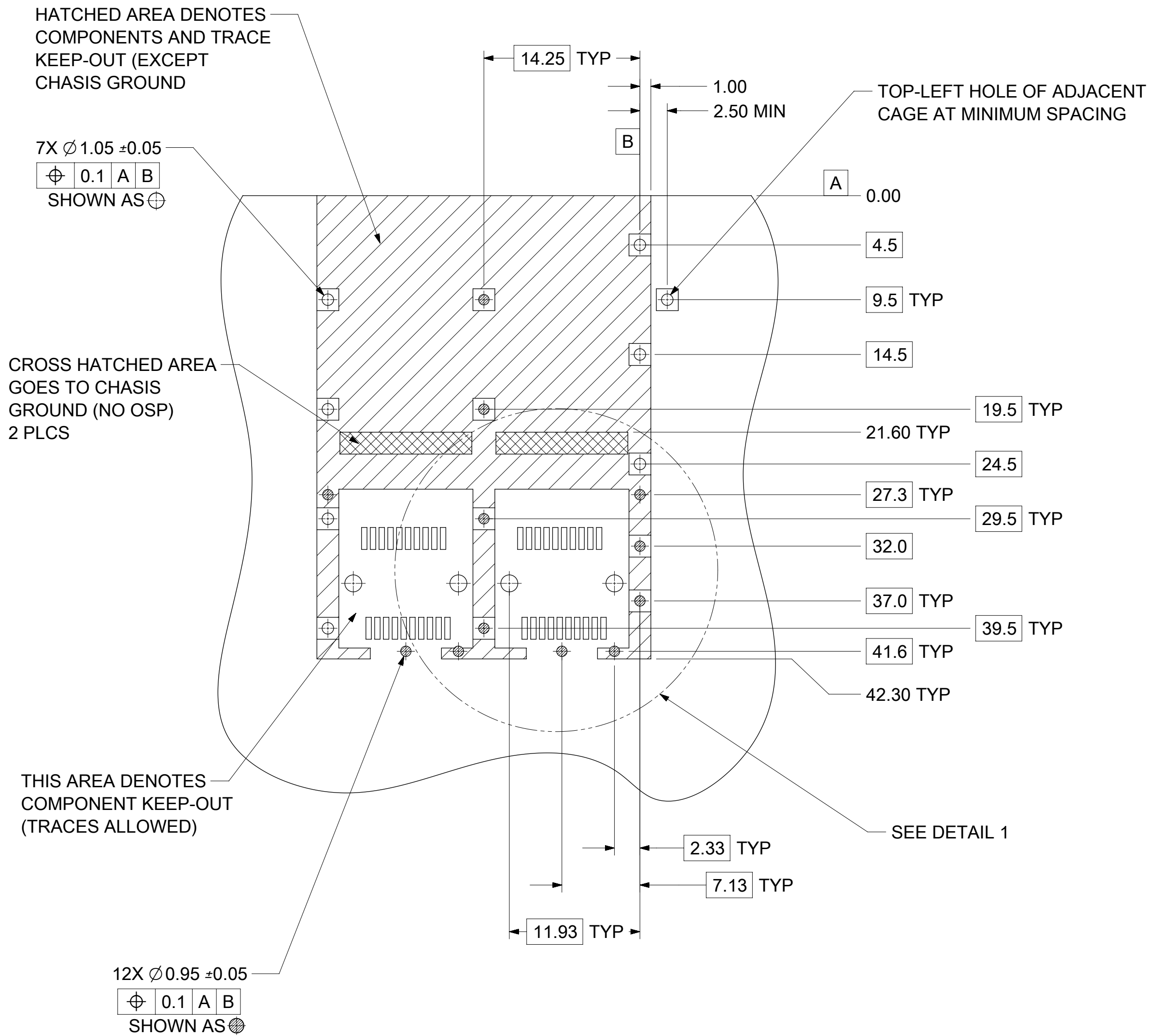
PN/DATE CODE TO BE PRINTED ON THE BACK OF COMPLETED CAGE ASSEMBLY APPROXIMATELY AS SHOWN.

WEEK/YEAR DATE CODE TABLE	
WW	WEEK OF THE YEAR 01 THRU 52 (EXAMPLE:01= FIRST WEEK OF YEAR 52=LAST WEEK OF YEAR)
YY	16, 17, 18 ETC. EXAMPLE: YEAR 2016 = 16

- NOTES:
- MATERIAL:
CAGE: 0.25mm THICK COPPER ALLOY, NICKEL PLATED.
SPRING FINGERS: 0.10mm THICK COPPER ALLOY, NICKEL PLATED.
 - PRESS FIT LEGS 3.05mm LONG
 - PORTS ARE DESIGNED FOR SFP+ TRANSCEIVERS AND ARE COMPATIBLE WITH SFP TRANSCEIVERS. THE TOP SURFACE OF THE MODULE MUST BE FLAT (NO PRODUCT LABEL RECESS) AND THERMALLY CONDUCTIVE TO FUNCTION OPTIMALLY.
 - WELD SPOT MAY SHOW SLIGHT MATERIAL DISCOLORATION.
 - NO RoHS EXEMPTIONS.

QUALITY SYMBOLS		THIS DRAWING CONTAINS INFORMATION THAT IS PROPRIETARY TO MOLEX ELECTRONIC TECHNOLOGIES, LLC AND SHOULD NOT BE USED WITHOUT WRITTEN PERMISSION		DIMENSION UNITS		SCALE		molex	
▽ = 0	▽ = 0	GENERAL TOLERANCES (UNLESS SPECIFIED)		MM		2.5:1			
▽ = 0	▽ = 0	ANGULAR TOL ± 1.0 °		DRWN BY		DATE		ZSFP+ 1X2 CAGE, 3.05 MM PRESS FIT, HEAT SINK, EMI SPRING FINGERS AND UNDER BELLY GASKET	
▽ = 0	▽ = 0	4 PLACES ±		PGSHETTY		2016/06/28			
▽ = 0	▽ = 0	3 PLACES ±		CHKD BY		DATE		PRODUCT CUSTOMER DRAWING	
▽ = 0	▽ = 0	2 PLACES ± 0.13		DSUN15		2016/07/31			
▽ = 0	▽ = 0	1 PLACE ± 0.25		APPR BY		DATE		SERIES MATERIAL NUMBER CUSTOMER	
▽ = 0	▽ = 0	0 PLACES ±		RCHEN08		2016/08/04			
⊠ = 0	■ = 0	DRAFT WHERE APPLICABLE MUST REMAIN WITHIN DIMENSIONS		DRAWING SIZE		THIRD ANGLE PROJECTION		DOCUMENT NUMBER DOC TYPE DOC PART SHEET NUMBER	
▽ = 0	▽ = 0	B1		C		100113 1001130220			

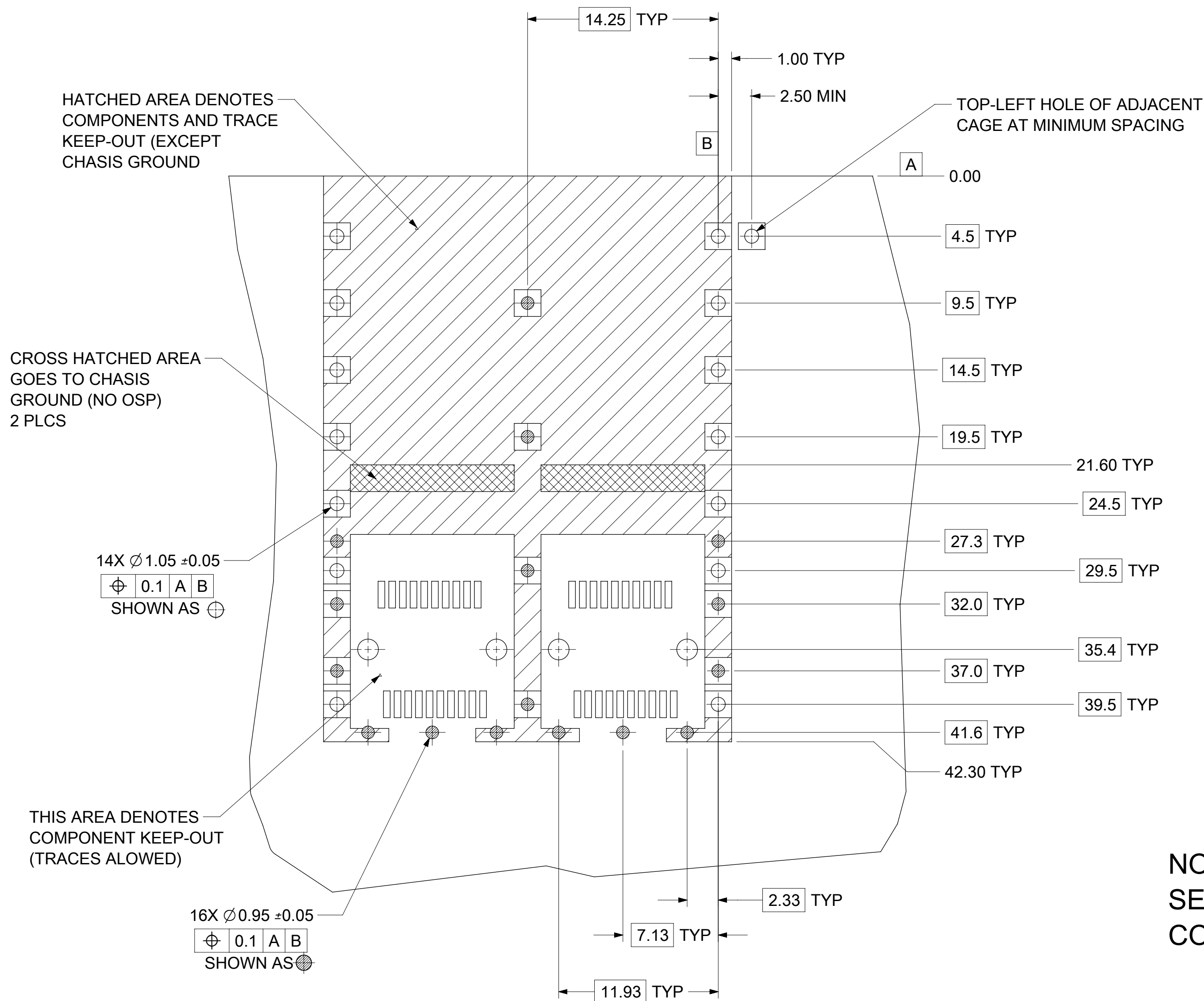
PCB LAYOUT - SINGLE SIDE ONLY



- NOTES:**
- PADS AND VIAS CONNECT TO CHASSIS GROUND
RECOMMEND PADS TO BE 2.00mm SQUARE
 - RECOMMENDED THRU HOLE PLATING INCLUDES HASL, OSP, OR IMMERSION (GOLD, SILVER, OR TIN)
 - CONNECTOR PAD LAYOUT PER SFP+ MSA WILL ACCOMODATE MOLEX CONNECTOR SERIES 170382 OR EQUIVALENT
 - SPACING BETWEEN PORTS IS 14.25mm
 - 1.57mm MINIMUM PCB THICKNESS FOR SINGLE SIDED USE.

QUALITY SYMBOLS		THIS DRAWING CONTAINS INFORMATION THAT IS PROPRIETARY TO MOLEX ELECTRONIC TECHNOLOGIES, LLC AND SHOULD NOT BE USED WITHOUT WRITTEN PERMISSION										
▽ = 0	▽ = 0	SEE REVISION TABLE EC NO: 112713 DRWN: YLJL433 CHKD: DSUN15 REV / APPR: RCHEN08 2017/01/23 2017/01/24 2017/01/24	GENERAL TOLERANCES (UNLESS SPECIFIED)			DIMENSION UNITS		SCALE				
▽ = 0	▽ = 0		ANGULAR TOL ± 1.0 °			MM		1:1				
▽ = 0	▽ = 0		4 PLACES ±			DRWN BY		DATE		ZSFP+ 1X2 CAGE, 3.05 MM PRESS FIT, HEAT SINK, EMI SPRING FINGERS AND UNDER BELLY GASKET		
▽ = 0	▽ = 0		3 PLACES ±			PGSHETTY		2016/06/28				
▽ = 0	▽ = 0		2 PLACES ± 0.13			CHKD BY		DATE		PRODUCT CUSTOMER DRAWING		
▽ = 0	▽ = 0		1 PLACE ± 0.25			DSUN15		2016/07/31				
▽ = 0	▽ = 0	0 PLACES ±			APPR BY		DATE		SERIES MATERIAL NUMBER CUSTOMER 100113 1001130220			
▽ = 0	▽ = 0	DRAFT WHERE APPLICABLE MUST REMAIN WITHIN DIMENSIONS			RCHEN08		2016/08/04					
▽ = 0	▽ = 0				DRAWING SIZE		THIRD ANGLE PROJECTION		DOCUMENT NUMBER DOC TYPE DOC PART SHEET NUMBER 1001130220 PSD ASY 2 OF 5			
▽ = 0	▽ = 0				C							

PCB LAYOUT FOR BELLY TO BELLY MOUNTING

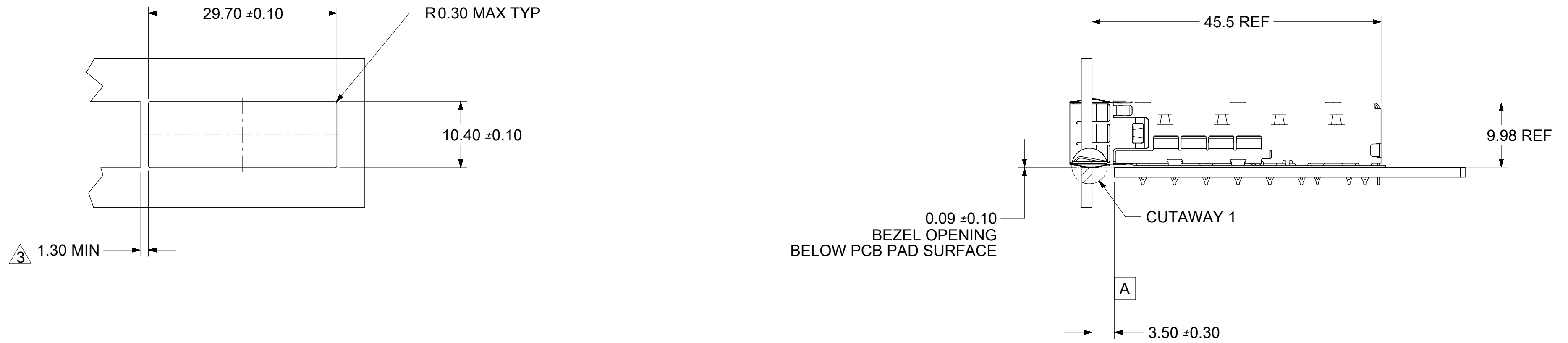


**NOTE:
SEE SHEET 2 FOR HOST
CONNECTOR DETAIL**

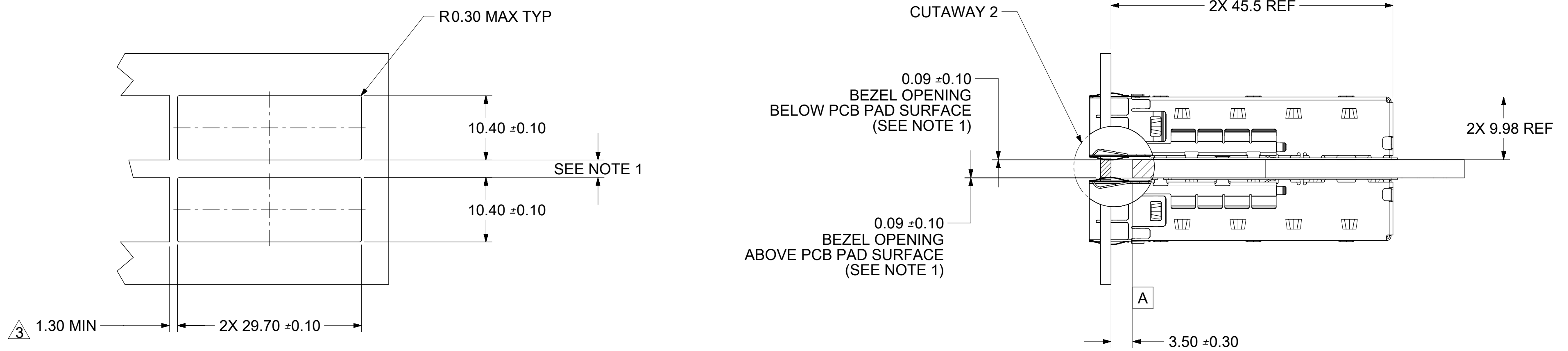
- NOTES:**
- PADS AND VIAS CONNECT TO CHASSIS GROUND
RECOMMEND PADS TO BE 2.00mm SQUARE
 - RECOMMENDED THRU HOLE PLATING INCLUDES HASL, OSP, OR IMMERSION (GOLD, SILVER, OR TIN)
 - CONNECTOR PAD LAYOUT PER SFP+ MSA WILL ACCOMODATE MOLEX CONNECTOR SERIES 170382 OR EQUIVALENT
 - SPACING BETWEEN PORTS IS 14.25mm
 - 3.00mm MINIMUM PCB THICKNESS FOR BELLY TO BELLY USE.

QUALITY SYMBOLS ∇ = 0 ∇ = 0 ∇ = 0 ∇ = 0 ∇ = 0 ∇ = 0 ∇ = 0 ∇ = 0 ∇ = 0 ∇ = 0 ∇ = 0 ∇ = 0	THIS DRAWING CONTAINS INFORMATION THAT IS PROPRIETARY TO MOLEX ELECTRONIC TECHNOLOGIES, LLC AND SHOULD NOT BE USED WITHOUT WRITTEN PERMISSION		DIMENSION UNITS MM	SCALE 4:1		
	EC NO: 112713 DRWN: YLJ433 CHKD: DSUN15 REV: APPR: RCHEN08	2017/01/23 2017/01/24 2017/01/24	GENERAL TOLERANCES (UNLESS SPECIFIED) ANGULAR TOL $\pm 1.0^\circ$ 4 PLACES \pm 3 PLACES \pm 2 PLACES ± 0.13 1 PLACE ± 0.25 0 PLACES \pm	DRWN BY PGSHETTY		DATE 2016/06/28
SEE REVISION TABLE		DRAFT WHERE APPLICABLE MUST REMAIN WITHIN DIMENSIONS	DRWN BY RCHEN08	DATE 2016/07/31	PRODUCT CUSTOMER DRAWING	
B1	C	DRAWING SIZE C	THIRD ANGLE PROJECTION	SERIES 100113	MATERIAL NUMBER 1001130220	CUSTOMER
RELEASE STATUS P1	RELEASE DATE 06.09.2016 08:49:34	DOCUMENT NUMBER 1001130220	DOC TYPE PSD	DOC PART ASY	SHEET NUMBER 3 OF 5	

BEZEL AND BOARD POSITION DIMENSIONS FOR SINGLE SIDE MOUNTING (SPRING FINGER)



BEZEL AND BOARD POSITION DIMENSIONS FOR BELLY TO BELLY MOUNTING (SPRING FINGER)



- NOTE:**
1. PCB THICKNESS VARIATION MUST BE CONSIDERED WHEN DETERMINING BEZEL OPENING SIZE AND LOCATION.
 2. CAGE LEG STANDOFF WILL PIERCE BELLY GASKET WHEN PROPERLY PRESSED INTO PCB.
 3. THIS DIMENSION IS FOR REF ONLY. USER CAN MODIFY IT DEPENDS ON APPLICATION. HOLE OF ADJACENT CAGE ON PCB LAYOUT VARIES ON MODIFICATION.

THIS DRAWING CONTAINS INFORMATION THAT IS PROPRIETARY TO MOLEX ELECTRONIC TECHNOLOGIES, LLC AND SHOULD NOT BE USED WITHOUT WRITTEN PERMISSION																																			
QUALITY SYMBOLS ▽ = 0 ▽ = 0 ▽ = 0 ▼ = 0 ▽ = 0 ⊠ = 0 ■ = 0 ▽ = 0	<table border="1" style="width: 100%; border-collapse: collapse;"> <tr> <td style="width: 15%;">GENERAL TOLERANCES (UNLESS SPECIFIED)</td> <td style="width: 15%;">DIMENSION UNITS: MM</td> <td style="width: 15%;">SCALE: 2:1</td> <td rowspan="2" style="text-align: center; vertical-align: middle;">molex[®]</td> </tr> <tr> <td>ANGULAR TOL ± 1.0 °</td> <td>DRWN BY: PGSHETTY</td> <td>DATE: 2016/06/28</td> </tr> <tr> <td>4 PLACES ±</td> <td>CHKD BY: DSUN15</td> <td>DATE: 2016/07/31</td> <td rowspan="2" style="text-align: center; vertical-align: middle;">ZSFP+ 1X2 CAGE, 3.05 MM PRESS FIT, HEAT SINK, EMI SPRING FINGERS AND UNDER BELLY GASKET</td> </tr> <tr> <td>3 PLACES ±</td> <td>APPR BY: RCHEN08</td> <td>DATE: 2016/08/04</td> </tr> <tr> <td>2 PLACES ± 0.13</td> <td colspan="2" style="text-align: center;">PRODUCT CUSTOMER DRAWING</td> <td>SERIES: 100113</td> </tr> <tr> <td>1 PLACE ± 0.25</td> <td colspan="2" style="text-align: center;">DRAFT WHERE APPLICABLE MUST REMAIN WITHIN DIMENSIONS</td> <td>MATERIAL NUMBER: 1001130220</td> </tr> <tr> <td>0 PLACES ±</td> <td colspan="2" style="text-align: center;">DRAWING SIZE: C THIRD ANGLE PROJECTION</td> <td>CUSTOMER: 1001130220</td> </tr> <tr> <td colspan="3"></td> <td>DOCUMENT NUMBER: 1001130220</td> </tr> <tr> <td colspan="3"></td> <td>DOC TYPE: PSD DOC PART: ASY SHEET NUMBER: 4 OF 5</td> </tr> </table>	GENERAL TOLERANCES (UNLESS SPECIFIED)	DIMENSION UNITS: MM	SCALE: 2:1	molex [®]	ANGULAR TOL ± 1.0 °	DRWN BY: PGSHETTY	DATE: 2016/06/28	4 PLACES ±	CHKD BY: DSUN15	DATE: 2016/07/31	ZSFP+ 1X2 CAGE, 3.05 MM PRESS FIT, HEAT SINK, EMI SPRING FINGERS AND UNDER BELLY GASKET	3 PLACES ±	APPR BY: RCHEN08	DATE: 2016/08/04	2 PLACES ± 0.13	PRODUCT CUSTOMER DRAWING		SERIES: 100113	1 PLACE ± 0.25	DRAFT WHERE APPLICABLE MUST REMAIN WITHIN DIMENSIONS		MATERIAL NUMBER: 1001130220	0 PLACES ±	DRAWING SIZE: C THIRD ANGLE PROJECTION		CUSTOMER: 1001130220				DOCUMENT NUMBER: 1001130220				DOC TYPE: PSD DOC PART: ASY SHEET NUMBER: 4 OF 5
GENERAL TOLERANCES (UNLESS SPECIFIED)	DIMENSION UNITS: MM	SCALE: 2:1	molex [®]																																
ANGULAR TOL ± 1.0 °	DRWN BY: PGSHETTY	DATE: 2016/06/28																																	
4 PLACES ±	CHKD BY: DSUN15	DATE: 2016/07/31	ZSFP+ 1X2 CAGE, 3.05 MM PRESS FIT, HEAT SINK, EMI SPRING FINGERS AND UNDER BELLY GASKET																																
3 PLACES ±	APPR BY: RCHEN08	DATE: 2016/08/04																																	
2 PLACES ± 0.13	PRODUCT CUSTOMER DRAWING		SERIES: 100113																																
1 PLACE ± 0.25	DRAFT WHERE APPLICABLE MUST REMAIN WITHIN DIMENSIONS		MATERIAL NUMBER: 1001130220																																
0 PLACES ±	DRAWING SIZE: C THIRD ANGLE PROJECTION		CUSTOMER: 1001130220																																
			DOCUMENT NUMBER: 1001130220																																
			DOC TYPE: PSD DOC PART: ASY SHEET NUMBER: 4 OF 5																																

REV	DATE	DESCRIPTION
A	2016/06/28	SEPERATED FROM 1111122220 PSM ASY
B	2016/09/01	SHEET 2: A12 : CORRECTED TYPO FROM 74441 TO 170382. SHEET 3: A12 : CORRECTED TYPO FROM 74441 TO 170382.
B1	2017/01/23	CHANGE DRAWING FORMAT FROM RSD TO SD

QUALITY SYMBOLS		THIS DRAWING CONTAINS INFORMATION THAT IS PROPRIETARY TO MOLEX ELECTRONIC TECHNOLOGIES, LLC AND SHOULD NOT BE USED WITHOUT WRITTEN PERMISSION									
▽ = 0	SEE REVISION TABLE EC NO: 112713 DRWN: YLJL433 CHKD: DSUN15 APPR: RCHEN08 REV: 2017/01/23 2017/01/24 2017/01/24	GENERAL TOLERANCES (UNLESS SPECIFIED)				DIMENSION UNITS	SCALE	molex [®]			
▽ = 0		ANGULAR TOL ± 1.0 °				MM	1:1				
▽ = 0		4 PLACES ±		PGSHETTY		DATE	ZSFP+ 1X2 CAGE, 3.05 MM PRESS FIT, HEAT SINK, EMI SPRING FINGERS AND UNDER BELLY GASKET				
▽ = 0		3 PLACES ±		DSUN15		2016/06/28					
▽ = 0		2 PLACES ± 0.13		CHKD BY		DATE	PRODUCT CUSTOMER DRAWING				
▽ = 0		1 PLACE ± 0.25		DSUN15		2016/07/31					
▽ = 0		0 PLACES ±		APPR BY		DATE	SERIES MATERIAL NUMBER CUSTOMER 100113 1001130220				
▽ = 0		DRAFT WHERE APPLICABLE MUST REMAIN WITHIN DIMENSIONS		RCHEN08		2016/08/04					
▽ = 0		B1		DRAWING SIZE		THIRD ANGLE PROJECTION	DOCUMENT NUMBER DOC TYPE DOC PART SHEET NUMBER 1001130220 PSD ASY 5 OF 5				
▽ = 0		C		C							