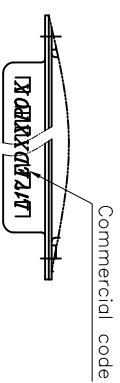
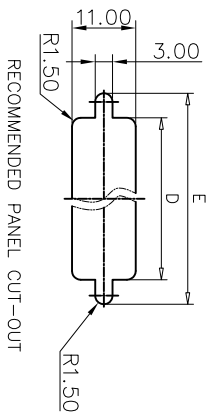
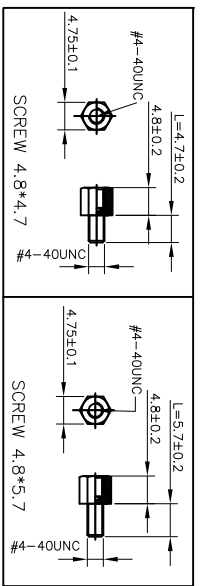
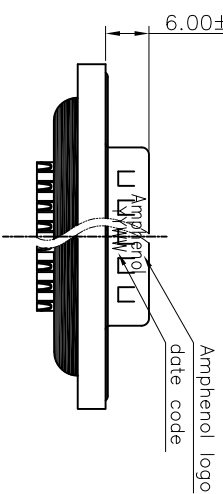
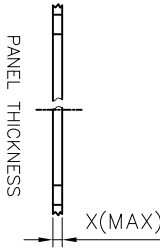
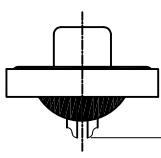
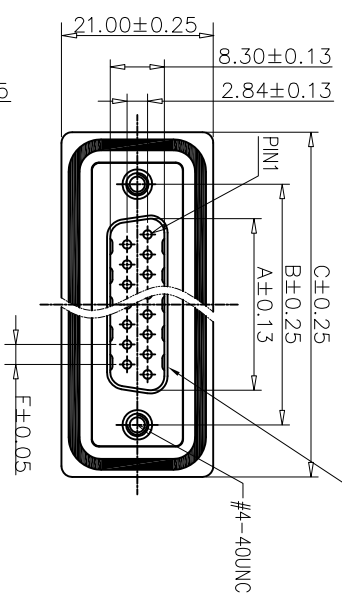


This document is the property of Amphenol Corporation and is delivered on the understanding that it is not to be retransmitted, reproduced, or used in any way without the prior consent, and that no right is granted to disclose or to use any information in this document.



Commercial code



Customer drawing

POSITION	A	B	C	D	E	F(PITCH)
9	16.92	24.99	39.40	20.00	28.20	2.77
15	25.30	33.32	47.70	28.00	36.50	2.77
25	38.96	47.04	64.50	41.50	51.00	2.77
37	55.42	63.50	80.78	57.80	67.30	2.77

REVISONS		DATE	APPROVED
1	New release	10/19/09	IP
2	Dim's correction	03/11/11	IP

D-SUB TECHNICAL DATA

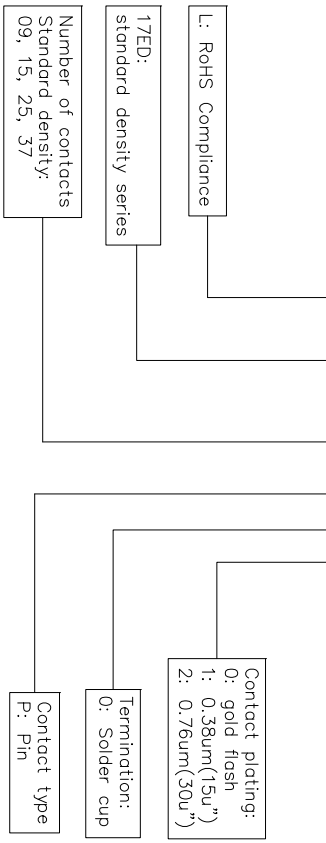
SHELL : Steel, 1.25um(50u") min nickel
 Glass filled thermoplastic.
BODY : flame retardant to UL94 V-0 color Black
 Glass filled thermoplastic.
PLATE : flame retardant to UL94 V-0 color Black
 Brass, gold over 50u" min nickel.(According to the P/N)
CONTACTS : Brass, 50u" min nickel
SCREWLOCK : Silicone Color: Blue
O RING : Epoxy: Color: Black
REAR INSERT : Brass, 50u" min nickel
ELECTRICAL : Voltage rating : 300 V RMS at 50 Hz
 Current rating : 5A
 Insulation resistance >5000 M Ohms
 Contact resistance 20mOhms max.
MARKING : Amphenol logo
 Commercial code
 Manufacturing date(YYWW)



NOTE : Screw L=4.7 For Panel Thickness Under X=1.2mm
 Screw L=5.7 For Panel Thickness Between X=1.2~2.0mm

PRODUCT CODE

L 17ED XX P 0 X



UNLESS OTHERWISE SPECIFIED		APPROVAL	DATE
TOLERANCES	Metric	DRAWN	Lanren 08/09/11
	0.30	CHECKED	Lik 08/09/11
	0.20	DATE	
	0.20		
	2'		
FOR MATERIALS AND FINISHES SEE NOTES		DRAWING FILE :	
REMOVE SHARP EDGES		ANGLE OF PROJECTION	
DIMENSIONS		SIZE	
D-SUB		DRAWING NO	
M/M		C L17EDXXP0X	
		SCALE	
		NONE	
		SHEET 1 OF 1	
		REV.	
		2	

Amphenol

Amphenol East Asia Limited
 D-sub Waterproof, ED series
 male Solder cup type