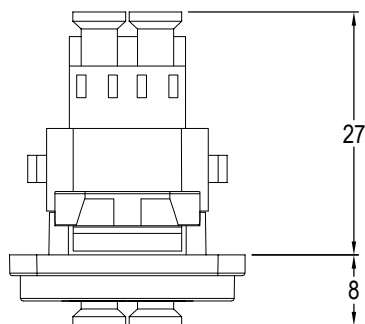
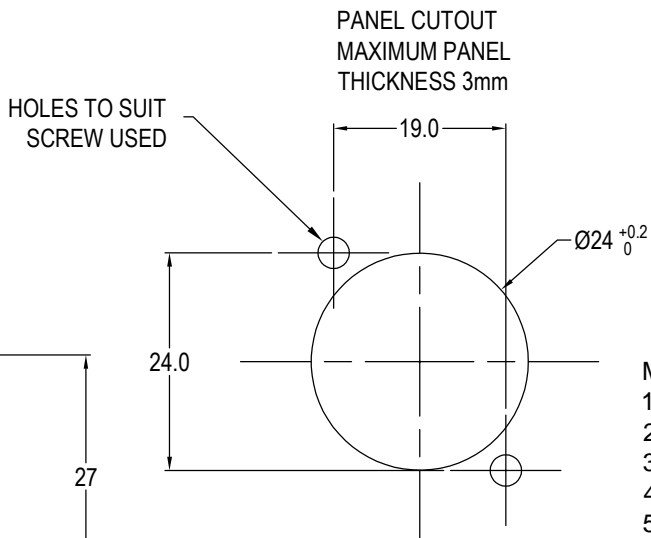
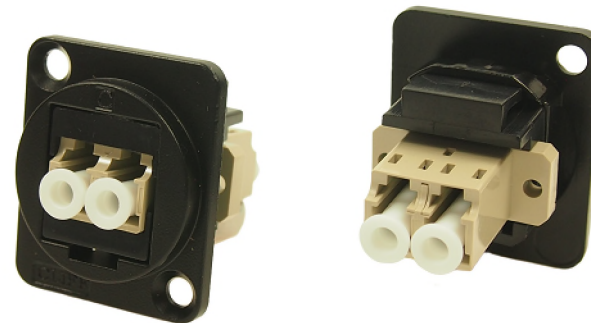


ISS.	AMEND	DATE
1	1st DRAWN	10/12/15
2	VIEW CORRECTED	29/09/16
3	ADD M3 VARIANT	01/06/18



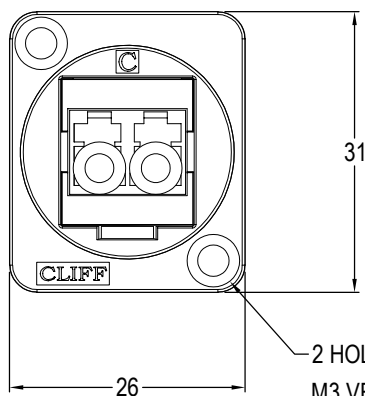
**Material:**

1. Coupler Body: PEI
2. Frame: Black Nickel plated zinc diecast
3. Sleeve: Ceramic
4. Dust Cover: PE
5. Insert: ABS/PC

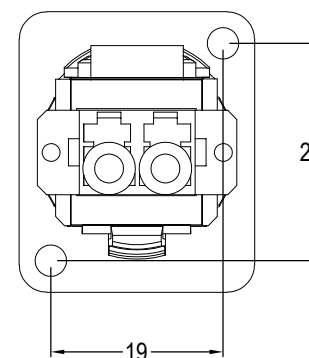
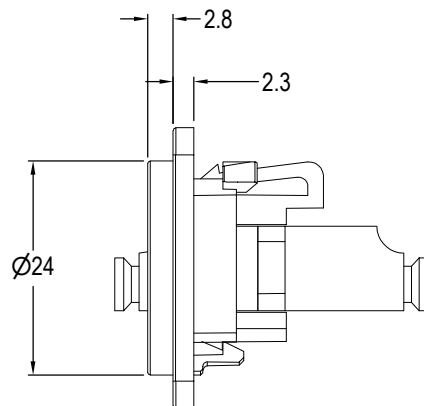
**Notes:**

1. Insertion Loss: ≤0.3dB

VARIANTS	
PART No.	HOLE DETAILS
CP30214MB	HOLE Ø3.50 x CSK 82° x Ø5.85
CP30214M3B	M3 HOLES



2 HOLES: Ø3.5mm CSK 82° x Ø5.85  
M3 VERSION HAS M3 THREAD HOLES.



**RoHS**  
COMPLIANT

**TOLERANCE**  
NO DEC. PLACE ±  
1 DEC. PLACE ±  
2 DEC. PLACE ±  
HOLE Ø ±  
ANGLES ±  
UNLESS  
OTHERWISE STATED

DO NOT SCALE

**Cliff Electronic Components Ltd.**

76 Holmethorpe Avenue, Holmethorpe Industrial Estate,  
Redhill, Surrey, RH1 2PF, England, UK  
Tel: 01737-771375 Fax: 01737-766012 Website: www.cliffuk.co.uk

THE CONTENTS OF THIS DOCUMENT MUST NOT BE COPIED OR DISCLOSED  
TO A 3rd PARTY WITHOUT WRITTEN PERMISSION OF CLIFF UK. © 2015

DIMENSIONS IN MILLIMETERS UNLESS OTHERWISE STATED. WORK TO DIMENSIONS. REMOVE ALL BURRS. IF IN DOUBT ASK.

3rd ANGLE PROJECTION:

MATERIAL: See Notes

FINISH: See Notes

DRAWN: D.P.J.

APPROVED: D.P.J.

TITLE: FT BLACK METAL LC DUPLEX MM ADAPTOR

DRWG. No. **CP30214MB**

FORM: A4DRWG+