

6

5

4

3

2

1

D

D

C

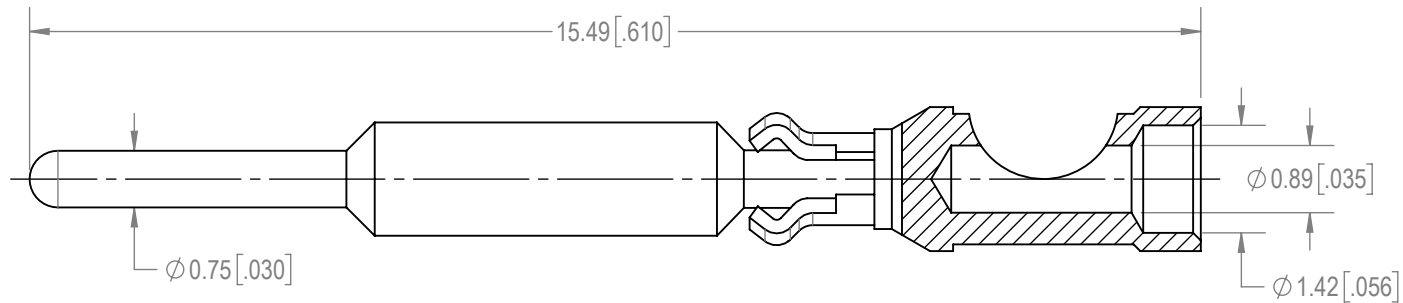
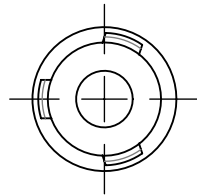
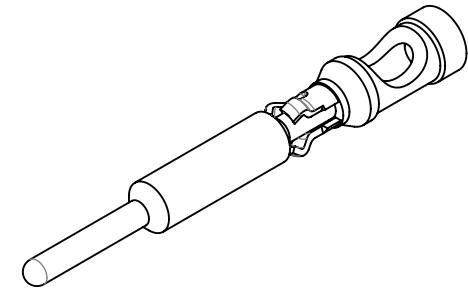
C

B



B

A

A

**NOTES:**

1. MATERIALS AND FINISH:
CONTACT: PRECISION MACHINED COPPER ALLOY, 0.38μ [0.00015] GOLD OVER NICKEL PLATE.
RETAINER RING: BERYLLIUM COPPER, GOLD FLASH OVER NICKEL PLATE.
2. CONTACT IS COMPLIANT TO THE CURRENT RoHS DIRECTIVE.
3. DETAILED PRODUCT, MECHANICAL AND ELECTRICAL INFORMATION IS AVAILABLE IN THE LATEST HIGH DENSITY RECTANGULAR PRODUCT PUBLICATION AT CONNECTPOSITRONIC.COM.

| | | | | | | | | | |
|--|--|------------------------------|--|--|--|---|--|---|--|
| BY APG | | CHK SS | | 3RD ANGLE  | | POSITRONIC BELIEVES THE DATA ON THE DRAWING TO BE RELIABLE. THE USER EMPLOYS SUCH INFORMATION AT HIS OWN DISCRETION AND RISK. POSITRONIC ASSUMES NO RESPONSIBILITY FOR RESULTS OBTAINED OR DAMAGES INCURRED FROM USE OF SUCH INFORMATION IN WHOLE OR IN PART. | |  | |
| APR PA | | RELEASED DATE: 2021-03-08 | | SCALE NTS | | MS422N/AA | | SERIES SGMC | |
| TOLERANCES +0.03mm [.001 INCHES]FOR MALE CONTACT MATING DIAMETERS +0.08mm [.003 INCHES]FOR CONTACT TERMINATION DIAMETERS +0.13mm [.005 INCHES]FOR ALL OTHER DIAMETERS +0.38mm [.015 INCHES]FOR ALL OTHER DIMENSIONS +5° FOR ALL ANGLES DIMENSION ARE IN MILLIMETERS [INCHES] | | | | | | | | MS422N/AA | |
| CREATED ON: 2021-02-15 | | | | SHEET SHEET 1 OF 1 | | REV A | | | |

6

5

4

3

2

1