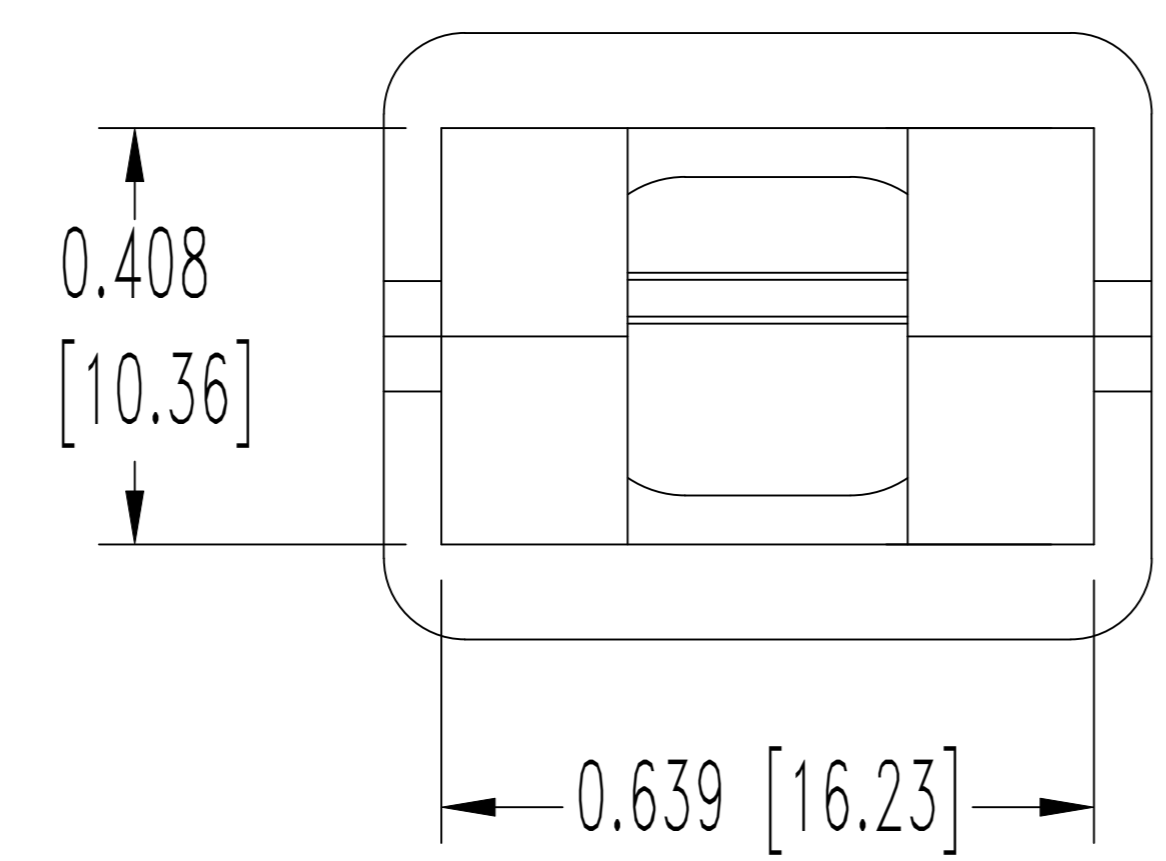
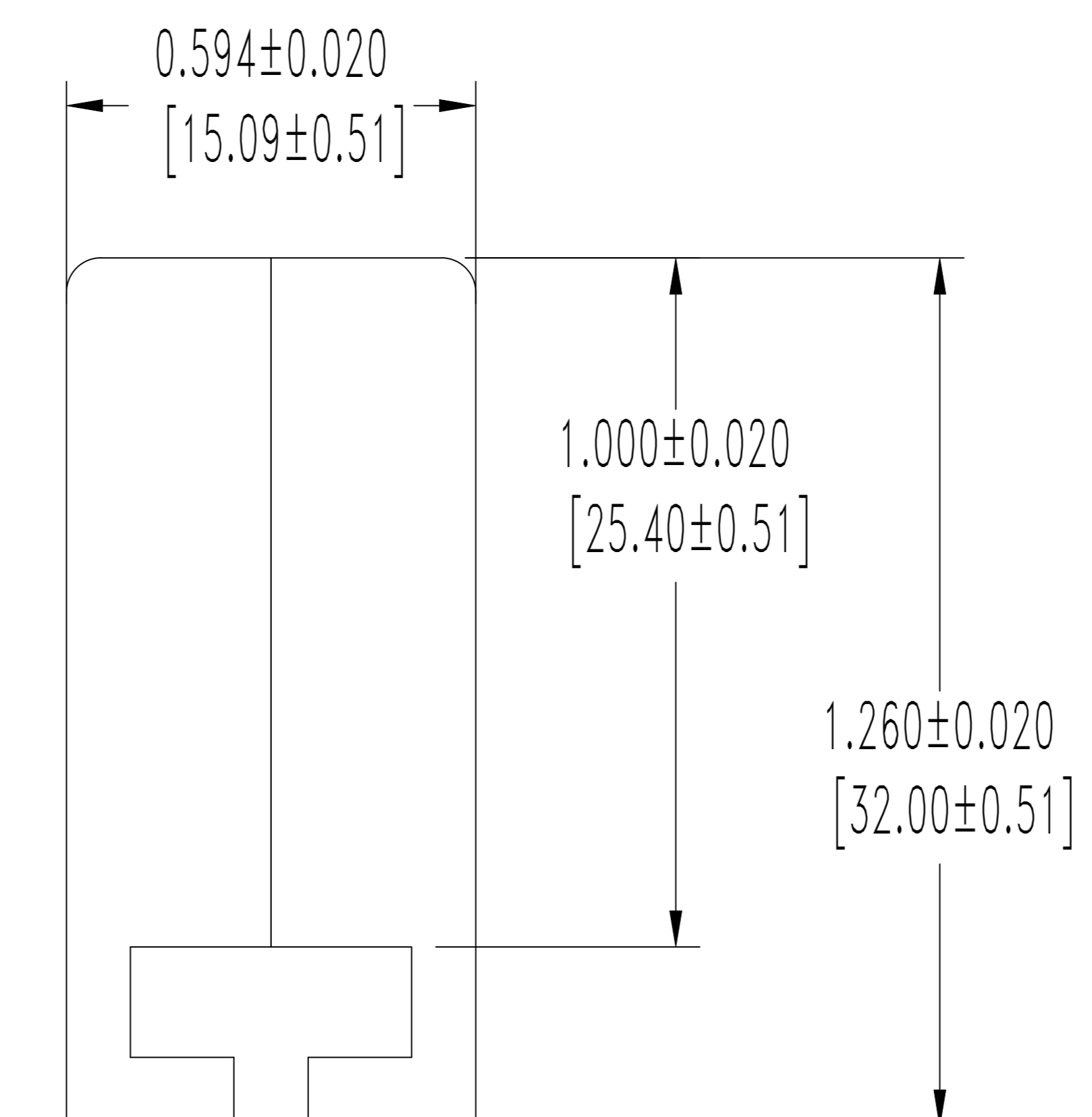
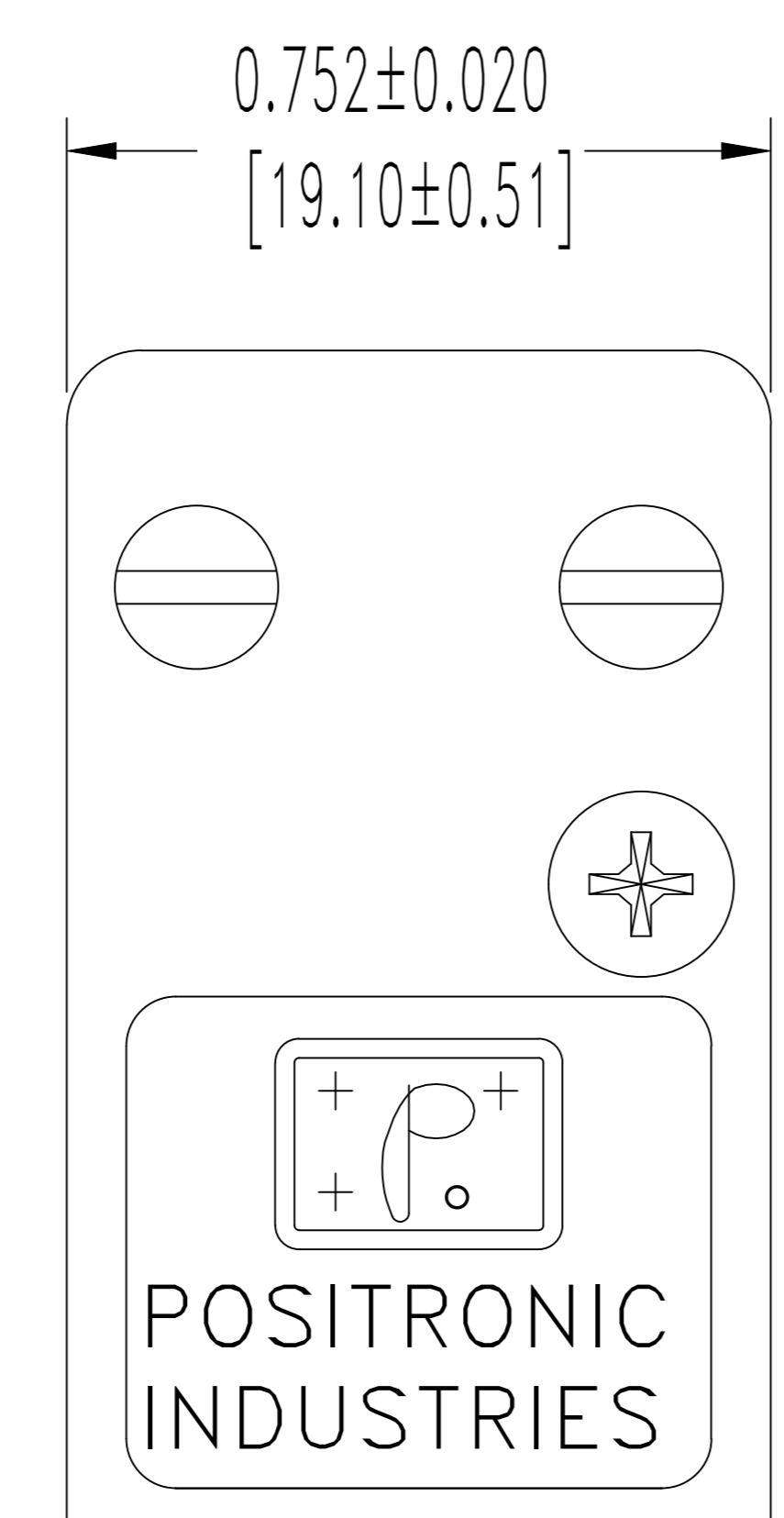


SK7015

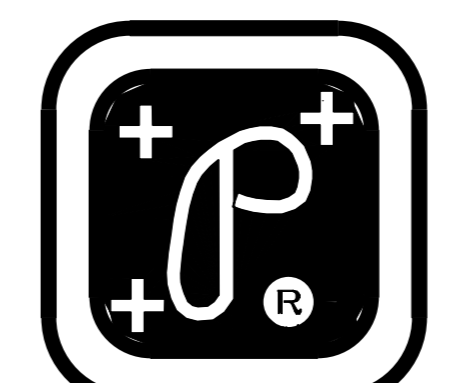
THIS DRAWING CONTAINS INFORMATION PROPRIETARY TO POSITRONIC AND IT'S SUBSIDIARIES. POSITRONIC BELIEVES THE DATA ON THIS DRAWING TO BE RELIABLE, SINCE THE TECHNICAL INFORMATION IS GIVEN FREE OF CHARGE, THE USER EMPLOYS SUCH INFORMATION AT HIS OWN DISCRETION AND RISK. POSITRONIC ASSUMES NO RESPONSIBILITY FOR RESULTS OBTAINED OR DAMAGES INCURRED FROM USE OF SUCH INFORMATION IN WHOLE OR IN PART.

DATE	REV	REVISION RECORD	APP	DR	CK
2-8-05	NC	ECO 25473	RW	YK	COLE
3-5-12	A	ECO 35322	COLE	MP	COLE



NOTES:

- MATERIALS AND FINISHES:  
 HOOD: GLASS FILLED POLYESTER, UL 94 V-0, COLOR BLUE.  
 HOOD SCREWS: STEEL, ZINC PLATE WITH CHROMATE SEAL.  
 CABLE CLAMP: STEEL, NICKEL PLATE.  
 CABLE CLAMP SCREWS: STEEL, ZINC PLATE WITH CHROMATE SEAL.
- DETAILED PRODUCT, MECHANICAL, AND ELECTRICAL INFORMATION IS AVAILABLE IN THE LATEST POWER CONNECTION SYSTEMS PRODUCT PUBLICATION. VISIT [CONNECTPOSITRONIC.COM/PRODUCTS/20/POWERCONNECTIONSYSTEMS](http://CONNECTPOSITRONIC.COM/PRODUCTS/20/POWERCONNECTIONSYSTEMS) OR [CONNECTPOSITRONIC.COM](http://CONNECTPOSITRONIC.COM).
- CONNECTORS ARE ROHS COMPLIANT PER ROHS DIRECTIVE 2002/95/EC OF 27 JAN 2003.
- DIMENSIONS ARE IN INCHES [MILLIMETERS].

 <b>POSITRONIC INDUSTRIES INC.</b> SPRINGFIELD, MISSOURI 65801		SCALE	DRAWN BY
PCS SERIES		N.T.S.	YK
DECIMAL TOL. ± 0.015 [0.38]		APPROVED BY R. WILLIAMS	
TITLE <b>PLA0300050/AA</b>			
ANGULAR TOL. ± 5°	DATE 2-8-06	DRAWING NUMBER SK7015	REV. A