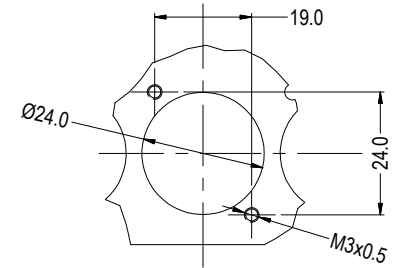


NOTES:-

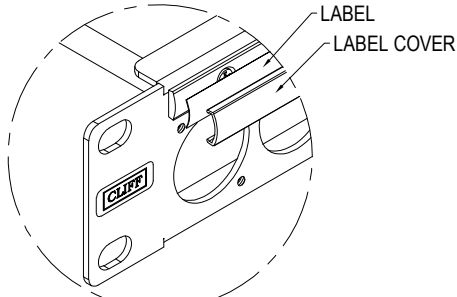
1. SUPPLIED FULLY ASSEMBLED AND INCLUDES 32x M3x0.5 BLACK COUNTERSUNK SCREWS.
2. PANEL TO RACK SCREWS NOT INCLUDED.

ISS.	AMEND	DATE
1	ISSUED	12/05/17
2	CLIFF LABEL	20/03/19

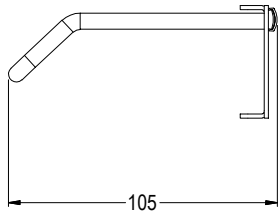
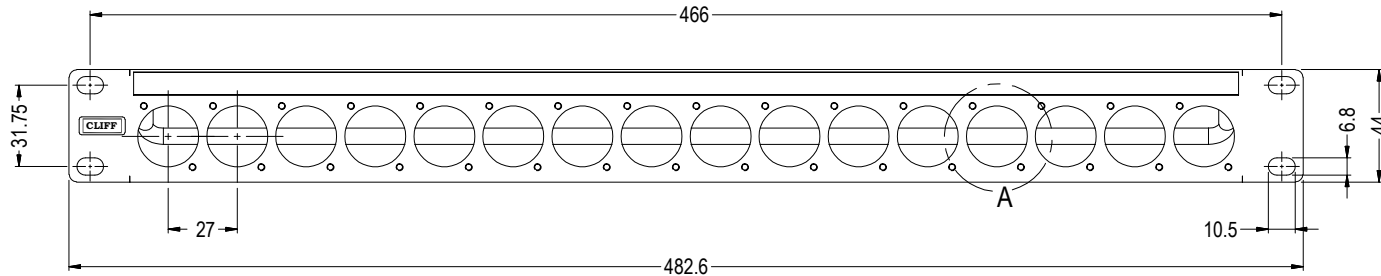
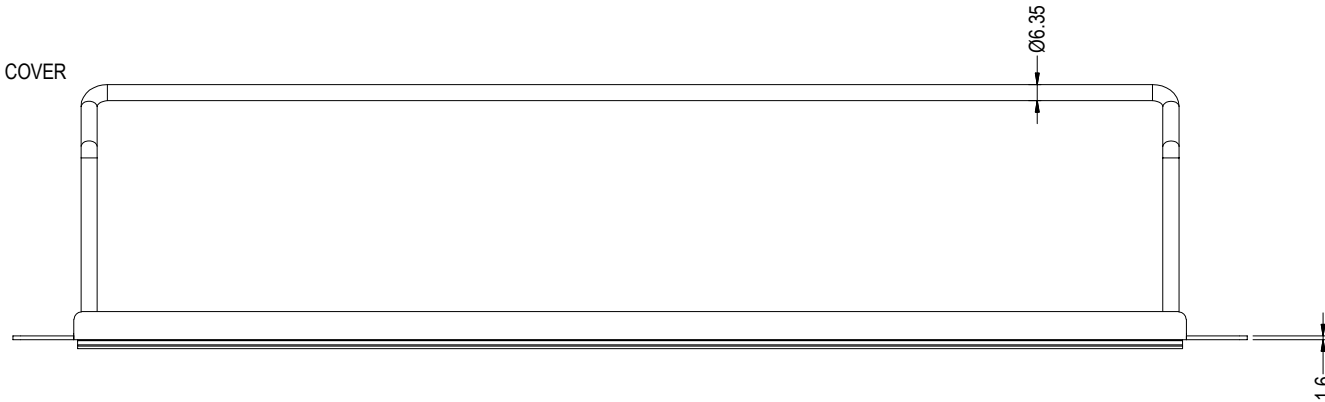
PART	MATERIAL
PANEL	STEEL, BLACK POWDER COATED
CABLE BAR	STAINLESS STEEL
LABEL	PAPER, WHITE
LABEL COVER	THERMOPLASTIC, CLEAR
LABEL BASE	THERMOPLASTIC, CLEAR
SCREWS	STEEL, BLACK



DETAIL VIEW A
(16 POSITIONS)



VIEW SHOWING LABEL &
LABEL COVER REMOVED



RoHS
COMPLIANT

TOLERANCE
NO DEC. PLACE ±
1 DEC. PLACE ±
2 DEC. PLACE ±
HOLE Ø ±
ANGLES ±
UNLESS OTHERWISE STATED

DO NOT SCALE

Cliff Electronic Components Ltd.
76 Holmethorpe Avenue, Holmethorpe Industrial Estate,
Redhill, Surrey, RH1 2PF, England, UK
Tel: 01737-771375 Fax: 01737-766012 Website: www.cliffuk.co.uk

DIMENSIONS IN MILLIMETERS UNLESS OTHERWISE STATED. WORK TO DIMENSIONS. REMOVE ALL BURRS. IF IN DOUBT ASK.

3rd ANGLE PROJECTION:

MATERIAL: SEE TABLE

FINISH: SEE TABLE

DRAWN: NJB

APPROVED: DPJ

TITLE: 1U x 16 PANEL ASSEMBLY M3x0.5 HOLES

DRWG. No. **CP30151**

FORM: A4DRWG+