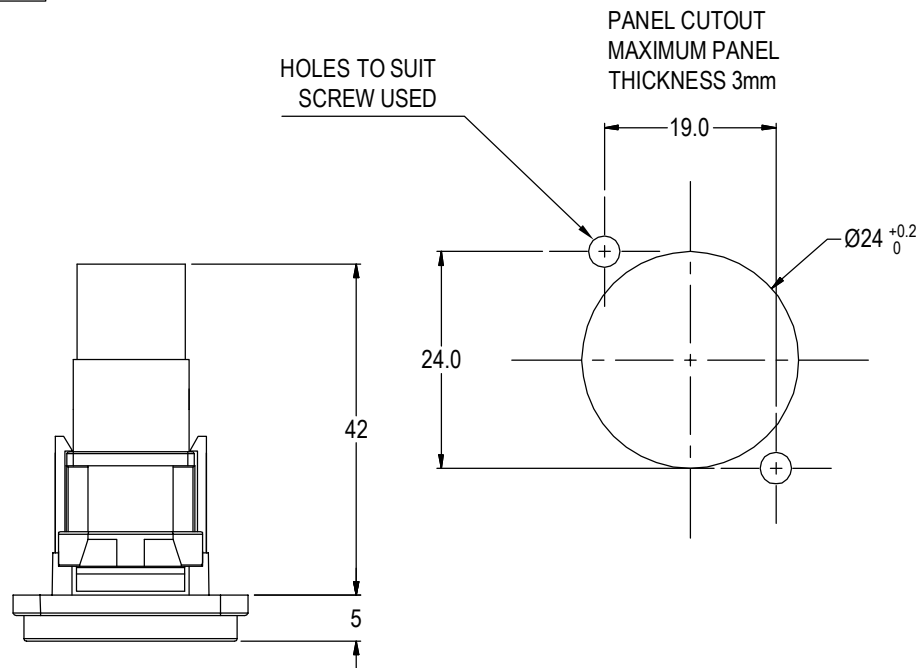


ISS.	AMEND	DATE
1	ISSUED	10/11/2016



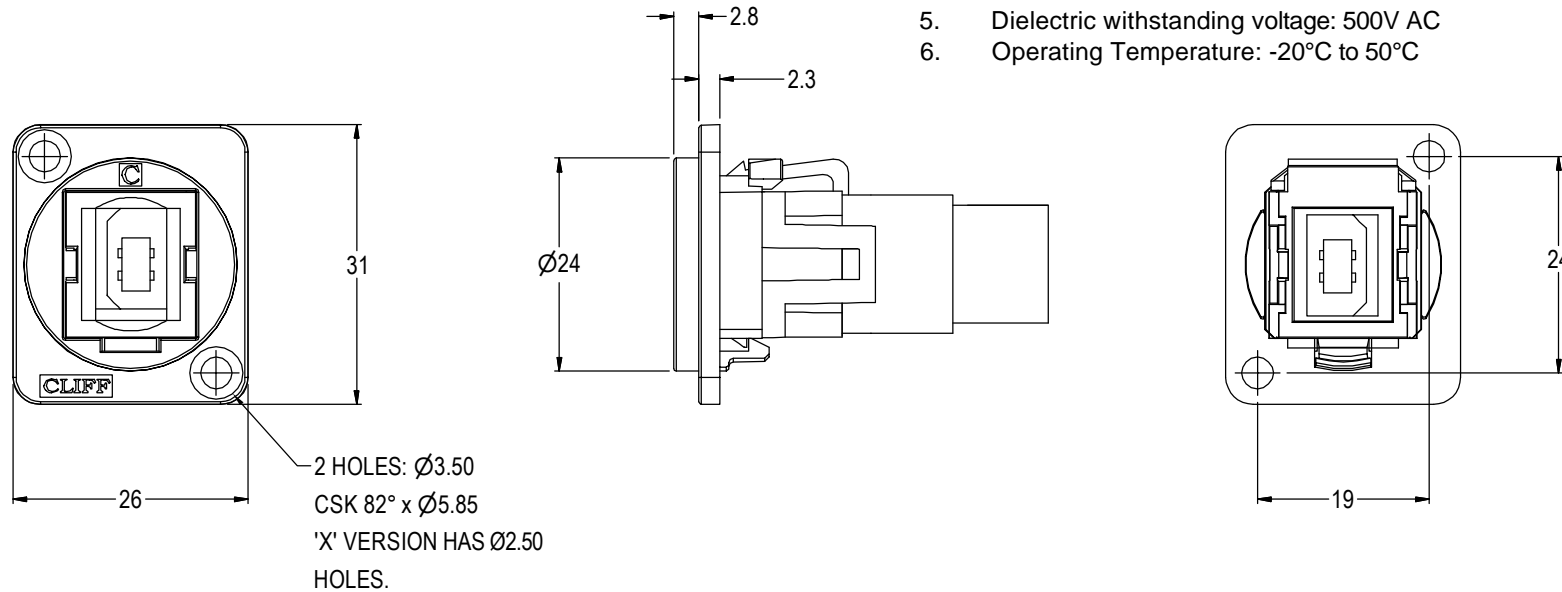
**Material:**

1. Insert: ABS
2. Frame: Polyamide
3. Shell: Nickel plated steel
4. Contacts: Gold Plated
5. UL94V-2

**Notes:**

1. Voltage rating: 30V AC
2. Current rating: 1.5A max
3. Contact resistance: 50mΩ max
4. Insulation resistance: 20MΩ min
5. Dielectric withstanding voltage: 500V AC
6. Operating Temperature: -20°C to 50°C

VARIANTS	
PART NO.	HOLE DETAILS
CP30203N	HOLE Ø3.50 X CSK 82° X Ø5.85
CP30203NX	PLAIN HOLE Ø2.50



**TOLERANCE**  
 NO DEC. PLACE ±  
 1 DEC. PLACE ±  
 2 DEC. PLACE ±  
 HOLE Ø ±  
 ANGLES ±  
 UNLESS OTHERWISE STATED

**Cliff Electronic Components Ltd.**  
 76 Holmethorpe Avenue, Holmethorpe Industrial Estate,  
 Redhill, Surrey, RH1 2PF, England, UK  
 Tel: 01737-771375 Fax: 01737-766012 Website: www.cliffuk.co.uk

DIMENSIONS IN MILLIMETERS UNLESS OTHERWISE STATED. WORK TO DIMENSIONS. REMOVE ALL BURRS. IF IN DOUBT ASK.

3rd ANGLE PROJECTION:

DO NOT SCALE

MATERIAL: See Notes  
 FINISH: See Notes

TITLE: FEED THROUGH USB 2.0 B to USB 2.0 B, Nickel Plated

THE CONTENTS OF THIS DOCUMENT MUST NOT BE COPIED OR DISCLOSED TO A 3rd PARTY WITHOUT WRITTEN PERMISSION OF CLIFF UK. © 2016

DRAWN: NJB

APPROVED: DPJ

DRWG. No. **CP 30203N** FORM: A4DRWGH