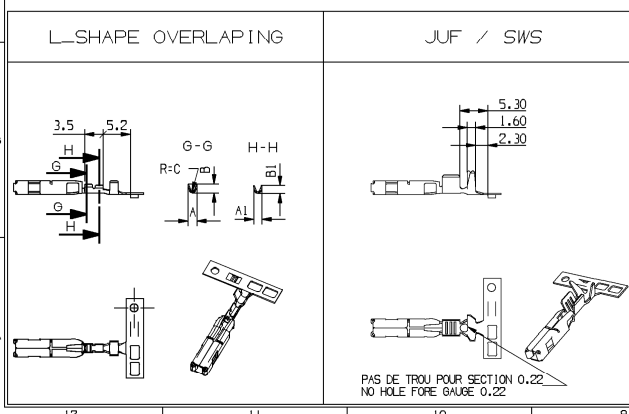
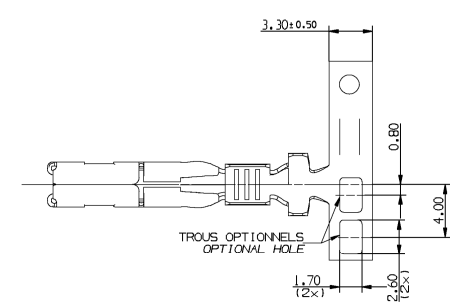
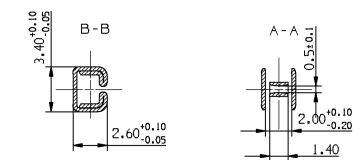
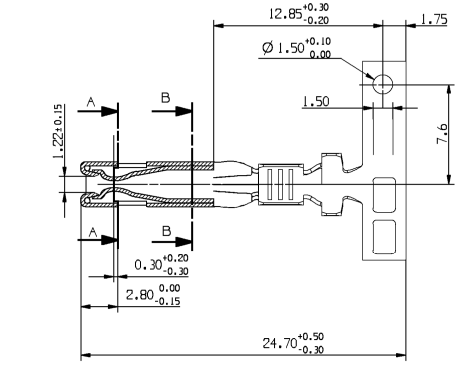
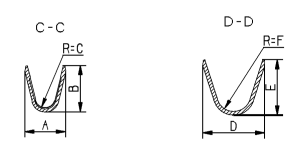
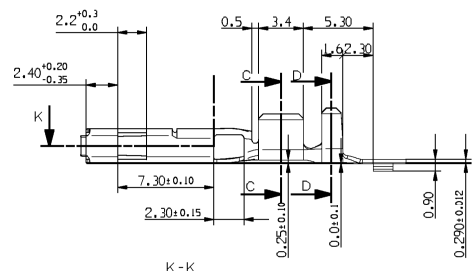
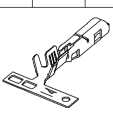
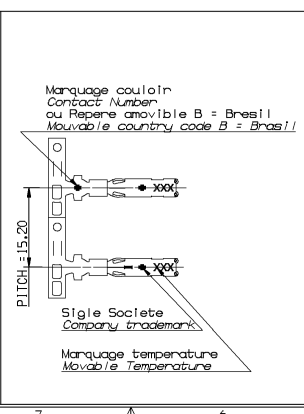


Etrêt Score	L-SHAPE OVERLAPPING		REQUIREMENT OVERLAPPING		REQUIREMENT OVERLAPPING		JUF / SWS		REQUIREMENT OVERLAPPING		JUF / SWS		Matière Material	Classe Class	Marquage Mark					
	P/N	Rev.	P/N	Rev.	P/N	Rev.	P/N	Rev.	P/N	Rev.	P/N	Rev.								
	P/N		P/N		P/N		P/N		P/N		P/N									
Pré-platé Pre-plated Sn 1 to 3µm	M/L	/	/	2110C250150P	0	2110C251150P	0	/	/	2110C254150P	0	/	/	2110C252150P	0	/	/	Cu Zn 15	85°	ND
	APTIV	/	/	335236F2	01	13777390	01	/	/	335236F4	01	/	/	13777391	01	/	/			
	M/L	/	/	2110C250160P	0	2110C251160P	0	2110C251161P	0	2110C254160P	0	2110C254161P	0	2110C252161P	0			Cu Fe 2P	125°	125
Pré-platé Pre-plated Au 1.07µm min	M/L	/	/	13625048	01	108639F4	01	13761154	01	10865152	01	13761651	01	108639F5	01	13761648	01			
	APTIV	33308333	01	13625048	01	108639F4	01	13761154	01	10865152	01	13761651	01	108639F5	01	13761648	01			
	M/L	/	/	2110C251190P	0	2110C251190P	0	/	/	2110C254190P	0	/	/	2110C252190P	0	/	/			
Pré-platé Pre-plated Au 1.07µm min	M/L	/	/	2110C250460P	0	2110C251460P	0	0	0	2110C254460P	0	0	0	2110C252460P	0	/	/			
	APTIV	33308344	01	13764603	01	13764604	01	/	01	33500701	01	/	/	13764602	01	/	/			
	RANGE	00	0	0	0	1	1	4	4	2	2									
Section gauge	0.13	0.22	0.35 to 0.70	0.75 to 1.30	1.35 to 2.00															
Ø tolérances Ø Tolerances	0.95 to 1.35	1.15 to 1.35	1.25 to 2.10	1.60 to 2.60	2.10 to 2.80															
A	1.75	1.53	2.60	2.88	3.10															
AI	1.60	/	/	/	/															
B	1.70	1.87	2.20	2.86	3.50															
R=C	0.31	0.33	0.75	0.75	0.75															
D ± 0.30	2.81	2.87	4.20	4.70	5.00															
E	2.60	3.05	3.30	4.15	4.20															
R=F	0.68	0.68	1.30	1.35	1.30															
Poids sans bande porteuse Weight without carrier strip	0.00043g	0.00043g	0.00049g	0.00044g	0.00046g															



PROTECTION OR / GOLD PLATING					
Reference	Area	Ni (µm)		Au (µm)	
		B	C	Sn	Sn
211 00 25 X460 P	SE (INT)	MIN	0.1	MAX	1.52
211 00 25 X461 P	CONTACT POINT	MIN	0.1	MAX	1.52

ZONE ET DIMENSIONS VALABLES POUR TOUTES REFERENCES  
AREA AND DIMENSIONS ARE VALID FOR ALL REFERENCES



UNLESS OTHERWISE SPECIFIED

GENERAL TOLERANCES ACCORDING TO: ±0.2 ±2°

SOFT ACCORDING TO:

DO NOT SCALE

USE MATH DATA

SHARP CORNER TOLERANCE

DWG TIP PART DRAWING

WEIGHT (GR)

VOLUME (CM³)

ROUTING

DISTR CODE

UNLESS OTHERWISE SPECIFIED

GENERAL TOLERANCES ACCORDING TO: ±0.2 ±2°

SOFT ACCORDING TO:

DO NOT SCALE

USE MATH DATA

**DELPHI**

DELPHI PACKARD ELECTRICAL/ELECTRONIC ARCHITECTURE

Esperan, France

COPYRIGHT 2017 DELPHI CORPORATION AND/OR ITS AFFILIATES. ALL RIGHTS RESERVED. REVISED 2018

THIS DRAWING IS THE PROPERTY OF DELPHI CORPORATION AND CONTAINS DELPHI CONFIDENTIAL INFORMATION. THE REPRODUCTION, DISTRIBUTION AND UTILIZATION OF THIS DOCUMENT OR ITS RELATED CAD DATA, AS WELL AS COMMUNICATION OF ANY CONTENT TO OTHERS, WITHOUT EXPRESS AUTHORIZATION, IS PROHIBITED.

CE PLAN EST LA PROPRIÉTÉ DE DELPHI CORPORATION ET CONTIENT DES INFORMATIONS PROPRIÉTAIRES DE DELPHI. LA REPRODUCTION, LA DISTRIBUTION ET L'UTILISATION DE CE DOCUMENT OU DE SES DONNÉES MÉTRIQUES CAD, SANS LA COMMUNICATION DE TOUT CONTENU À AUTRUI, SANS AUTORISATION EXPRESSE EST INTERDITE.

DR	L. DOMERGUE	DATE	28MR17
AP/01	L. DELESCLUSE		28MR17
AP/02	P. CAPPE		28MR17
AP/03			
AP/04			
AP/05			

SUBSTANCES OF CONCERN AND RECYCLED CONTENT PER DELPHI 10949001 MATTERED PROPERTIES ET CONTENU RECYCLABLE SELON DELPHI 10949001

DRAWING NAME: FEMALE TERMINAL 1.50 x 0.80

SICMA 3+

DRAWING NUMBER: 10857567

SIZE	SCALE	FRAME NO	SHEET NO	REV N°/P
A1	5:1	1 OF 1	1 OF 3	R 02 AC

CONTROLLED DOCUMENTS ARE ONLY AVAILABLE ON THE SERVER



GANMES DE SERTISSAGE  
CRIMPING RANGE

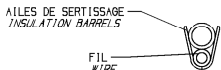
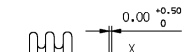
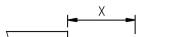
PARAMETRES DE SERTISSAGE  
CRIMP PARAMETERS

SECTION GAUGE (mm <sup>2</sup> )	CONTACT FEMALE TERMINAL	SERTISSAGE CUIVRE WIRE BARREL				FRETTAGE ISOLANT INSULATION BARREL				
		SECTION (mm <sup>2</sup> ) SECTION (mm <sup>2</sup> )		LARGEUR WIDTH	HUTEUR HEIGHT	PAR RECOMMANDEMENT WITH OVERLAPPING		AVEC JUF WITH SWS		
		THEORIQUE THEORETICAL	REELLE REAL	G ± 0.04	C ± 0.04	(LARGEUR) (WIDTH)	(HUTEUR) (HEIGHT)	(LARGEUR) (WIDTH)	(HUTEUR) (HEIGHT)	
0.13 (L SHAPE)	0.25	0.25	0.13	1.45	0.80	1.00	(2,02)	(1,52)		
	0.25	0.25	0.13	1.45	0.80	1.00	(2,02)	(1,52)		
0.22	0.25	0.25	0.22	1.42	0.88	1.20	(2,03)	(1,75)	(2,45)	(2,50)
	0.25	0.25	0.22	1.42	0.88	1.20	(2,03)	(1,75)	(2,45)	(2,50)
0.35 - 0.70	0.25	0.25	0.35	1.65	1.09	1.30	(2,58)	(2,02)	(3,06)	(2,58)
	0.25	0.25	0.35	1.65	1.09	1.30	(2,58)	(2,02)	(3,06)	(2,58)
0.75 - 1.30	0.25	0.25	0.75	1.90	1.31	1.79	(3,00)	(2,20)	(3,49)	(2,97)
	0.25	0.25	0.75	1.90	1.31	1.79	(3,00)	(2,20)	(3,49)	(2,97)
1.35 - 2.00	0.25	0.25	1.40	2.36	1.52	2.30	(3,22)	(2,54)	(3,75)	(3,27)
	0.25	0.25	1.40	2.36	1.52	2.30	(3,22)	(2,54)	(3,75)	(3,27)

(valeur): UNIQUEMENT POUR INFORMATION (value) : FOR INFORMATION ONLY

3 PREPARATION DES FILS  
WIRE PREPARATION

LONGUEUR DE DENUDAGE DES FILS:  
STRIP WIRE LENGTH (X=4,50±0,20)



SERTISSAGE AVEC FILS SUPERPOSES: METTRE LE PETIT FIL EN DESSOUS  
CRIMPING WITH SUPERPOSED WIRES: PUT SMALL ONE BELOW

REFERENCE JOINT: SEAL PARTNAME

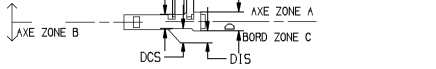
SECTION GAUGE		SECTION GAUGE	
MVL	APTIV	MVL	APTIV
0.22 TO 0.75		0.80 TO 2.00	
211 M 0007	10736278	211 M 0008	10736279

4 SERTISSAGE SUR FIL / CRIMP ON WIRE

SUR FIL ET SUR JOINT UNITAIRE  
ON WIRE AND ON SINGLE SEAL

DEFORMATION MAXI AUTORISEE APRES SERTISSAGE: AUTHORIZED DEFORMATION MAXI AFTER CRIMPING:  
± 4° ENTRE AXE ZONE A ET BORD ZONE C ± 4° BETWEEN ZONE A AXIS AND ZONE C EDGE  
± 2° ENTRE AXE ZONE A ET AXE ZONE B ± 2° BETWEEN ZONE A AXIS AND ZONE B AXIS

DEPASSEMENT BRINS DE CUIVRE 0,60 ± 0,4  
INSULATION AND WIRE MUST BE VISIBLE IN THIS AREA



DCS:DEPORT CAGE-CUIVRE CAGE-WIRE TRANSLATION  
DIS:DEPORT CAGE-ISOLANT CAGE-INSULATION TRANSLATION  
K ± 3° MAXI

DCSJ:DEPORT CAGE-CUIVRE AVEC JOINT CAGE-WIRE TRANSLATION WITH SEAL  
DISJ:DEPORT CAGE-ISOLANT AVEC JOINT CAGE-INSULATION TRANSLATION WITH SEAL

TEMIN DE DECOUPE EN PARTIE ARRIERE UNIQUEMENT STAMPING WITHNESS ONLY IN THE REAR PART

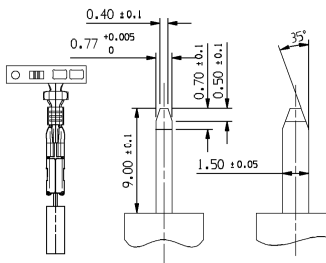
TENUE DE L'ISOLANT: APRES 9 PLIAGES A 45° SELON LES AXES I, J, H ET L, L'ISOLANT NE DOIT PAS AVOIR GLISSE HORS DES AILES DE FRETTAGE. KEEPING OF INSULATION: AFTER 9 BENDINGS AT 45° IN I, J, H AND L AXES, THE INSULATION MUST NOT MOVE OUT OF THE INSULATION BARRELS.

6 CONDITIONNEMENT  
PACKAGING

CONDITIONNEMENT SUIVANT NORME GALIA  
PACKAGING ACCORDING TO GALIA SPECIFICATION

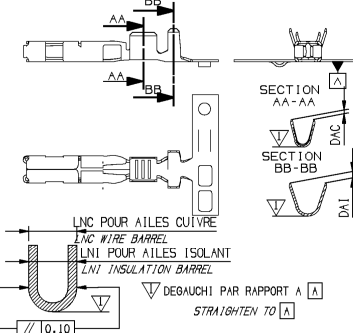
Suivant PU N° 059  
Following PU N° 059

5 CALIBRE DE CONTROLE  
CONTROL GAUGE



MASSE 80 g MATIERE 1.45 NCD 17; 56 H-C; √0.8 √0.1  
CASSE LES ANGES VIFS LE CALIBRE MONTE DANS LE CLIP NE DOIT PAS TOMBER DE SON PROPRE POIDS  
WEIGHT 80 g MATERIAL 1.45 NCD 17; 56 H-C; √0.8 √0.1  
BRAKE THE AGGRESSIVE ANGLES THE GAUGE SHOULD NOT FALL DOWN WITH ITS OWN WEIGHT

CONTACT FEMALE TERMINAL



NOTICE DE CONTROLE AU PIED A COULISSE OU AU PROJECTEUR DE PROFIL, VERIFIER LES COTES INDIQUEES SUR LE DESSIN DU CLIP. METTRE LES AILES PARALLELES A L'AIDE D'UN MONTAGE APPROPRIE, PUIS MESURER LA COTE OBTENUE  
CONTROL SPECIFICATION SLIDING CALIPER OR PROFIL PROJECTOR, MEASURE THE INDICATED DIMENSION ON THE DRAWING. PUT THE BARRELS PARALLEL WITH AN ADAPTED MOUNTING, AND MEASURE THE OBTAINED DIMENSION.

DWG STATUS	DATE	REV	IN/PG/CH	ZONE	REVISION HISTORY	AUTH	DR	AP/0	AP/0
18JA18	R	02	--		SEE SHEET 1		L.	DOM	L.DELP.CAP
20AP18	02	AA			SEE SHEET 1		L.	DOM	S.BOS.P.CAP
26JN18	02	AB			SEE SHEET 1		L.	DOM	S.BOS.P.CAP
13JUL18	02	AC			UPDATED GENERAL TOLERANCE		L.	DOM	S.BOS.P.CAP

DWG TIP PART DRAWING

WEIGHT (GR)

VOLUME (CM<sup>3</sup>)

ROUTING

UNLESS OTHERWISE SPECIFIED

GENERAL TOLERANCES ACCORDING TO: ±0.2 ±2°

SOAT ACCORDING TO:

REFERENCE 211P0463

FIRST ANGLE PROJECTION

DO NOT SCALE

USE MATH DATA

**DELPHI**  
DELPHI PACKARD ELECTRICAL/ELECTRONIC ARCHITECTURE  
Epprem, France

COPYRIGHT 2017 DELPHI CORPORATION AND/OR ITS AFFILIATES. ALL RIGHTS RESERVED.

THIS DRAWING IS THE PROPERTY OF DELPHI CORPORATION AND CONTAINS DELPHI CONFIDENTIAL INFORMATION. THE REPRODUCTION, DISTRIBUTION AND UTILIZATION OF THIS DOCUMENT OR ITS RELATED CAD DATA, AS WELL AS COMMUNICATION OF ANY CONTENT TO OTHERS, WITHOUT EXPRESS AUTHORIZATION, IS PROHIBITED.

CE PLAN EST LE PROPRIETE DE DELPHI CORPORATION ET CONTIENT DES INFORMATIONS PERME PROPRIETES I.P.C. A APPROPRIETES. LA REPRODUCTION ET UTILISATION DE CE DOCUMENT OU DE SES DONNEES INTERIEURES CAD, ANSI QUE LA COMMUNICATION DE TOUT CONTENU A AUTRUI SANS AUTORISATION EXPRESSE EST INTERDITE.

DATE

DR L. DOMERGUE 28MR17

AP/01 L. DELESCLUSE 28MR17

AP/02 P. CAPPE 28MR17

AP/03

AP/04

AP/05

SUBSTANCES OF CONCERN AND RECYCLED CONTENT PER DELPHI 10949001 MATIERS PRODIGES ET CONTENU RECYCLES SELON DELPHI 10949001

DRAWING NAME

FEMALE TERMINAL 1.50 x 0.80

SICMA 3 +

DRAWING NUMBER

10857567

SIZE A1

SCALE 3:1

FRAME NO 1 OF 1

SHEET NO 3 OF 3

STB REV N/P 02 AC