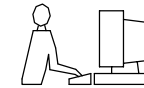
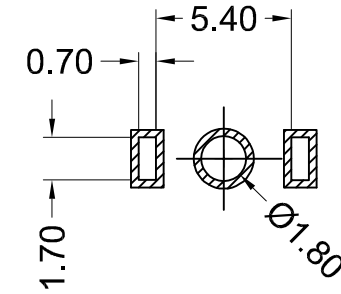
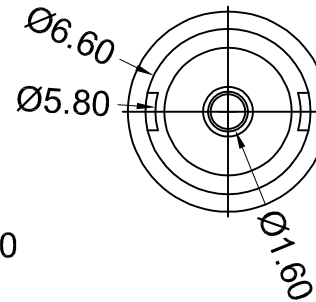
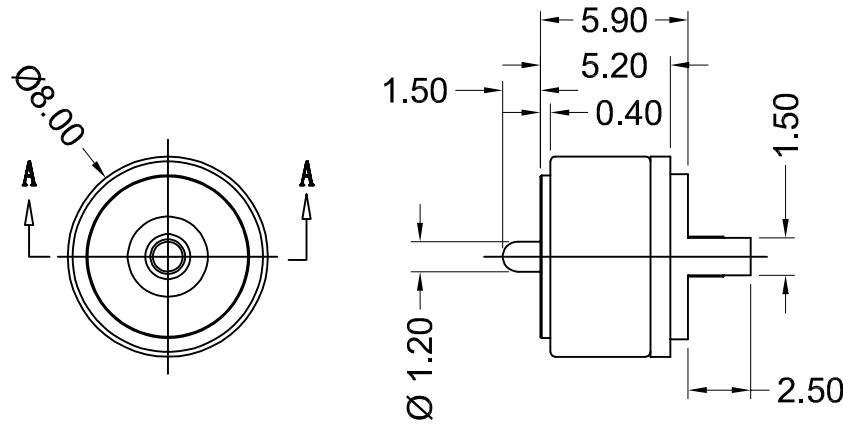


TOLERANCE UNLESS OTHERWISE SPECIFIED	
.X	±0.15
.XX	±0.10

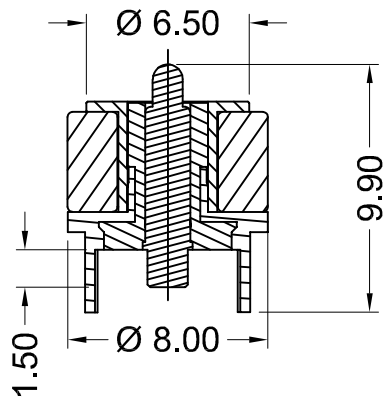
THIS IS A C.A.D. GENERATED DRAWING
DO NOT MAKE MANUAL REVISIONS TO MASTER.



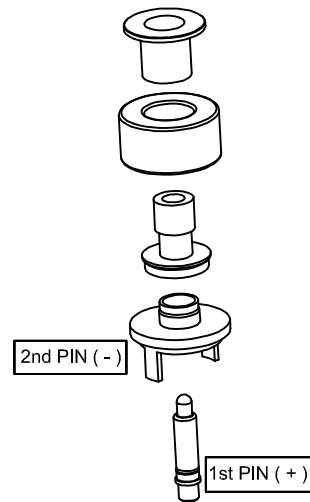
ISSUE NUMBER	
ORIGINAL	①



PCB LAYOUT



SECTION A-A



SPECIFICATION:

1.0 PLATING:

- 1) POWER PIN: H59, 5μ"Au OVER 50 - 120μ" Ni
- 2) HOUSING: PA46, BLACK
- 3) MAGNET: N52

2.0 VOLTAGE RATING: 12V

3.0 CURRENT RATING: 2A

4.0 INSULATION RESISTANCE: 100MOHM MIN

5.0 DIELECTRIC WITHSTANDING VOLTAGE: 100V AT 60HZ

6.0 CONTACT RESISTANCE: 30 mOHM MAX BEFORE TEST AND 60mOHM AFTER TEST AT POGOPIN WORKING STROKE

7.0 RECOMMENDED WORKING STROKE & FORCE:

STROKE 1.1mm (PER CONTACT): 80±20gF

8.0 MECHANICAL LIFE: 10,000 CYCLES MIN

9.0 WORKING TEMPERATURE RANGE: -30°C TO +85°C

10.0 MAGNET GAUSE VALUE: 2400±200GS



THIS SERIES FULLY CONFORMS TO
THE EUROPEAN UNION DIRECTIVES
2011/65/EU FOR RoHS COMPLIANCY.



YOUR CONNECTION TO QUALITY & SERVICE

EDAC INC
TORONTO, ONTARIO
CANADA

THESE DRAWINGS AND SPECIFICATIONS
ARE THE PROPERTY OF EDAC INC., AND
SHALL NOT BE REPRODUCED, OR COPIED
OR USED AS THE BASIS FOR THE
MANUFACTURE OR SALE OF APPARATUS
WITHOUT WRITTEN PERMISSION.

POGO CONNECTOR, 2 POS, MALE	ACAD REFERENCE NO.: 685-00221201111		UNIT: MM
	DRAWN: E.S.	DATE: JUN.16/2022	
	CHECKED: R.S.M.	DATE: JUN.16/2022	
	SCALE: (IN C.A.D. 1:1)	SHEET 1 OF 1	
	DRAWING NUMBER: 685-00221201111	ISSUE 1	
	PART NUMBER: 685-00221201111		