

NOTES:

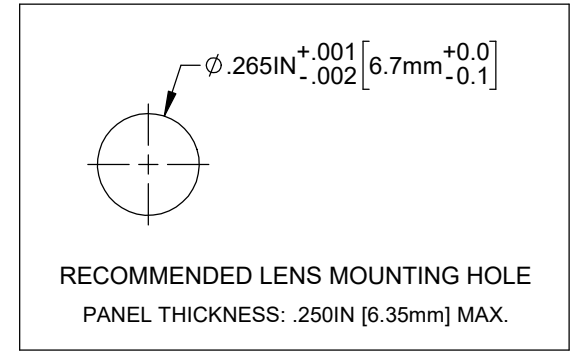
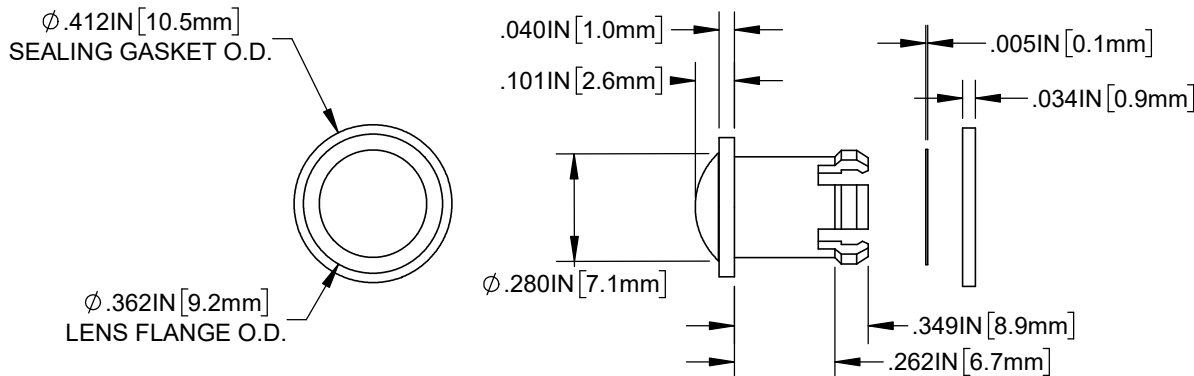
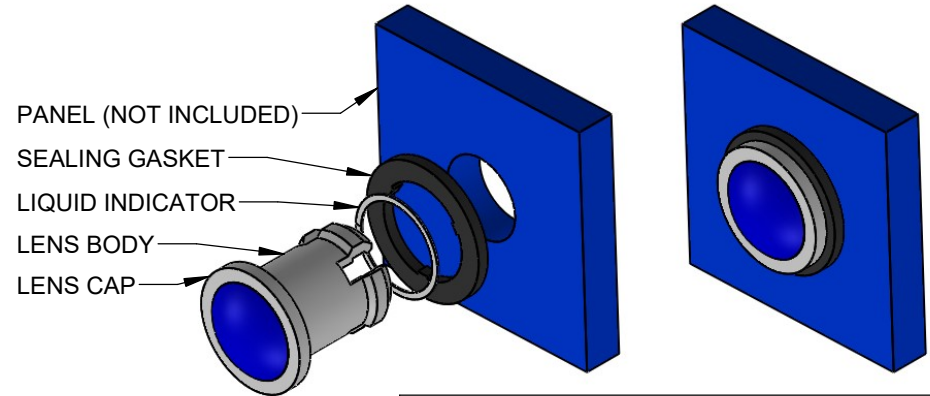
1. LENS WITH INDICATOR AND GASKET SHIPPED UNASSEMBLED.
2. MATERIAL: POLYCARBONATE LENS WITH PAPER INDICATOR& IP RATED POLYURETHANE SEALING GASKET WITH ADHESIVE.
3. ASSEMBLY INSTRUCTIONS FOR IP68 RATING
 - CLEAN PANEL SURFACE WITH ALCOHOL
 - PEEL LINER TAPE OFF ONE SIDE OF THE SEALING GASKET
 - SLIDE SEALING GASKET ONTO INSTALLATION TOOL OR 0.264" PIN GAUGE AND INSERT THE TOOL/GAUGE IN MOUNTING HOLE. USE THE TOOL/PIN GAUGE TO GUIDE SEALING GASKET TOWARDS MOUNTING HOLE AS CENTERED AS POSSIBLE. PEEL REMAINING LINER TAPE SLOWLY AWAY
 - INSERT LENS CAP INTO PANEL UNTIL LENS TABS ENGAGE WITH PANEL ON OPPOSITE SIDE
4. RECOMMENDED FOR USE WITH < 35 MCD LUMINOUS INTENSITY & > 620 NM DOMINANT WAVELENGTH LEDS

REVISIONS			
REV.	DESCRIPTION	DATE	APPROVED
A	ENGINEERING RELEASE	8/1/2022	A.V.

PART NUMBER CONFIGURATION

SGLC-250-D-LD XX
 .250" [6.4mm] PANEL ——— LENS COLOR SEE TABLE 1
 DOME LENS ——— LIQUID DETECTION

ORDER CODE (BLANK)	LENS APPEARANCE
BE	TINTED BLUE
GN	TINTED GREEN
YW	TINTED YELLOW



CUSTOMER USE DRAWING

SAMPLE PART NUMBER

SGLC-250-D-LD GN
 .250" [6.4mm] PANEL ——— TINTED GREEN LENS
 DOME LENS ——— LIQUID DETECTION

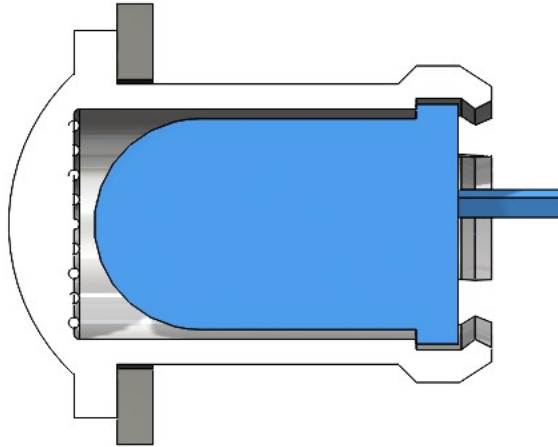
STANDARD TOLERANCE (UNLESS OTHERWISE SPECIFIED)		 4 THOMAS, IRVINE, CA. 92618 TEL: (949) 951-8808 FAX: (949) 951-3974	
DECIMALS: .X ± .1, .XX ± .01, .XXX ± .005 ANGULAR: X° ± 1°			
DESIGNED: E. CHAN		TITLE: IP68 LENS CAP	
DATE: 8/1/2022		DRAWING NO: SGLC-250-D-LD XX	
REVISION: N/A		REVISION: A	
DATE: NA		SHEET SIZE: A	
CHECKED: A. VALDEZ		CAGE CODE: 32559	
DATE: 8/1/2022		SCALE: 2:1	
		SHEET # 1 OF 2	

CAD GENERATED DOCUMENT, DO NOT MEASURE DRAWING

FOR OPTIMAL LIGHT DISTRIBUTION FOLLOW PRODUCT PLACEMENT INSTRUCTIONS LISTED BELOW:

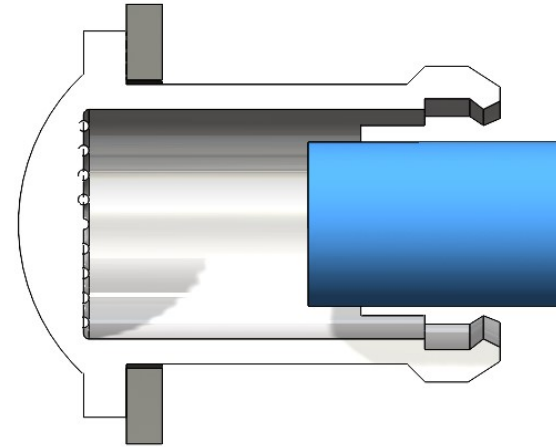
PRODUCTS INSERTED COMPLETELY INSIDE LENS CAP:

- * LPR5 LIGHT PIPE SERIES
- * 5mm DISCRETE LEDs



PRODUCTS RECESSED 0.2" FROM INSIDE SURFACE:

- * 1.8mm DISCRETE LEDs
- * 3mm DISCRETE LEDs
- * LPR4 LIGHT PIPE SERIES
- * LPV4 LIGHT PIPE SERIES
- * VLP LIGHT PIPE SERIES
- * SLP3 LIGHT PIPE SERIES
- * RLP1 LIGHT PIPE SERIES



CUSTOMER USE DRAWING

		BIVAR [®]		REVISION:
CAGE CODE:	32559	DRAWING NO:	SGLC-250-D-LD XX	A
SHEET SIZE:	A	SCALE:	2:1	SHEET # 2 OF 2
CAD GENERATED DOCUMENT, DO NOT MEASURE DRAWING				