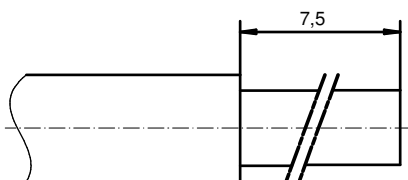


NOTES:

- 1. MATERIAL: COPPER ALLOY
- 2. PLATING:
ITEM 1: SEE TABLE
ITEM 2: GOLD FLASH over NICKEL
ITEM 3: NICKEL PLATED

| (b) | PLATING ITEM 1 | PART-NO. |
|-----|--------------------------------------|------------|
| (c) | GOLD FLASH over NICKEL | 131A10049X |
| | 30µm HARD GOLD over min. 50µm NICKEL | 131C10049X |
| | 50µm HARD GOLD over min. 50µm NICKEL | 131J10049X |

STRIPPING DIMENSION



Directive 2002/95/EC RoHS compliant

| | | | | | | | | | |
|--|-------------|------------|-------|----------------------------------|----------------------------|---|---------------------|--------|--------------|
| THIS DRAWING MAY NOT BE COPIED OR REPRODUCED IN ANY WAY, AND MAY NOT BE PASSED ON TO A THIRD PARTY WITHOUT WRITTEN PERMISSION. OWNERSHIP AND COPYRIGHT OF CONEC GmbH | | | | tolerance | | dim. in mm | scale: 6:1 | | |
| | | | | DO NOT ALTER CAD DRAWING BY HAND | | | material: SEE NOTES | | |
| | | | | date | name | title: HIGH POWER CONTACT MALE SOLDER CUP 40A D-SUB COMBINATION | | | |
| | | | | drawn | 23.03.98 | | | | Barcinski |
| | | | | appd. | 23.03.98 | | | | Mickenbecker |
| 1 x c | Ä5121 | 07.03.2014 | K.H. | d-old | dwg no: 13K11D0A | | | DIN-A3 | |
| 1 x b | Ä2885 | 10.12.2007 | Sonne | | | | | sh: 1 | |
| a | Origin | | | | part no: SEE TABLE | | | | |
| rev. | description | date | name | | | | | | |