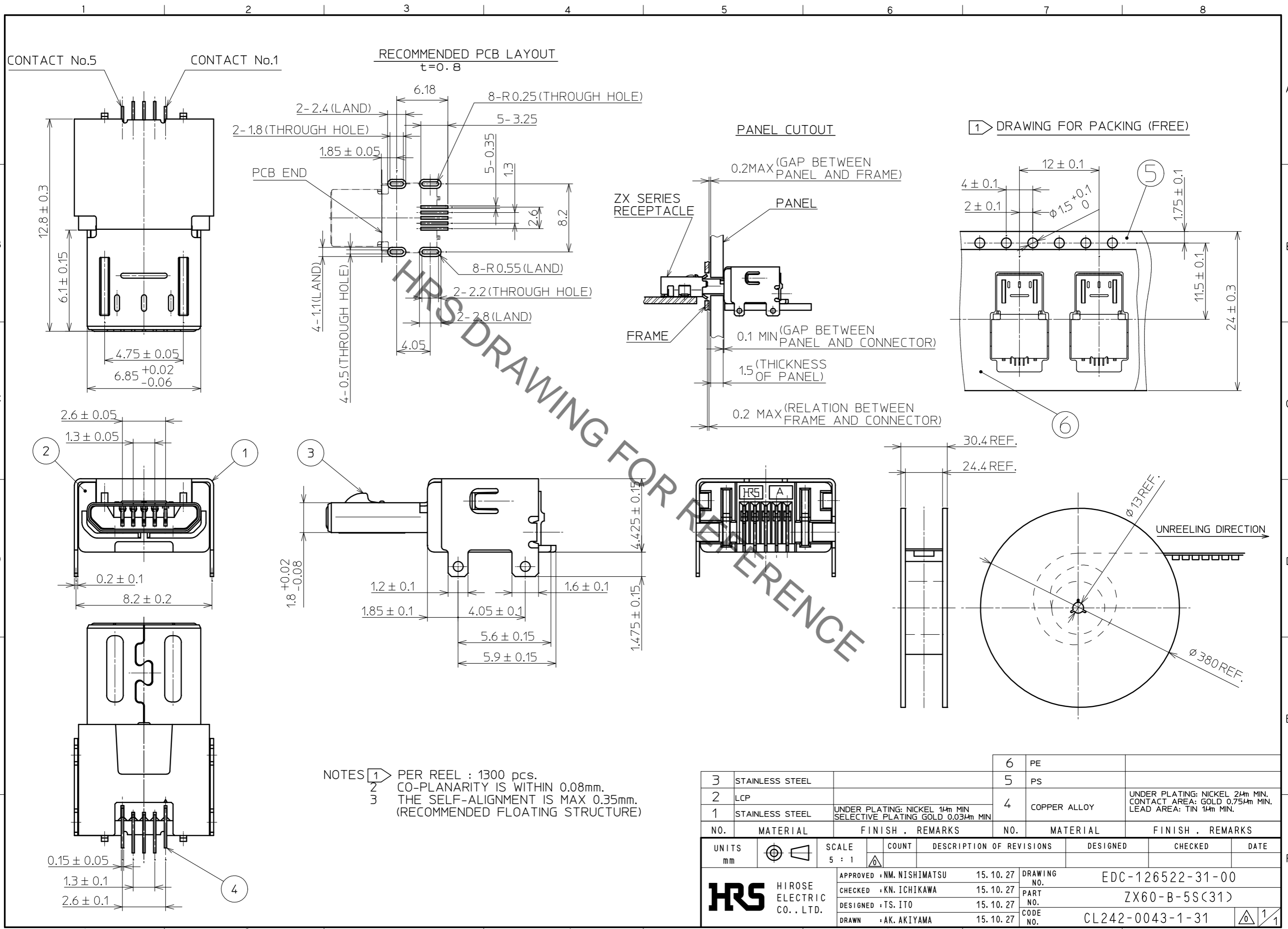


Oct.1.2022 Copyright 2022 HIROSE ELECTRIC CO., LTD. All Rights Reserved.
In case of consideration for using Automotive equipment / device which demand high reliability, kindly contact our sales window correspondents.



| 3 | STAINLESS STEEL | | 6 | PE | | | | |
|--------------------------------------|-----------------|---|----------|------------------------------|---|----------|---------|------|
| 2 | LCP | | 5 | PS | | | | |
| 1 | STAINLESS STEEL | UNDER PLATING: NICKEL 14μm MIN SELECTIVE PLATING GOLD 0.03μm MIN | 4 | COPPER ALLOY | UNDER PLATING: NICKEL 24μm MIN. CONTACT AREA: GOLD 0.75μm MIN. LEAD AREA: TIN 14μm MIN. | | | |
| NO. | MATERIAL | FINISH . REMARKS | NO. | MATERIAL | FINISH . REMARKS | | | |
| UNITS | mm | SCALE | 5 : 1 | COUNT | DESCRIPTION OF REVISIONS | DESIGNED | CHECKED | DATE |
| HRS HIROSE ELECTRIC CO., LTD. | | APPROVED : NM. NISHIMATSU | 15.10.27 | DRAWING NO. EDC-126522-31-00 | | | | |
| | | CHECKED : KN. ICHIKAWA | 15.10.27 | PART NO. ZX60-B-5S(31) | | | | |
| | | DESIGNED : TS. ITO | 15.10.27 | CODE NO. CL242-0043-1-31 | | | | |
| | | DRAWN : AK. AKIYAMA | 15.10.27 | | | | | |