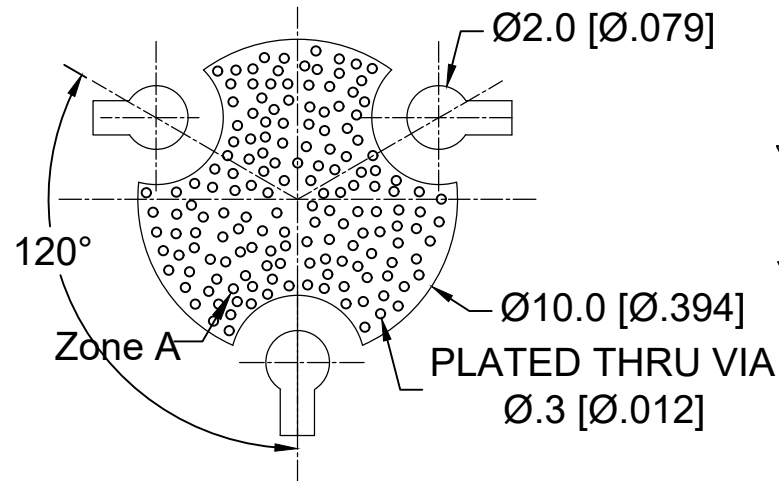
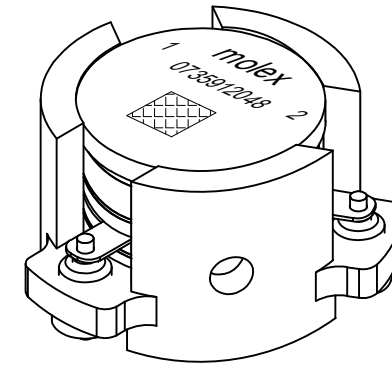
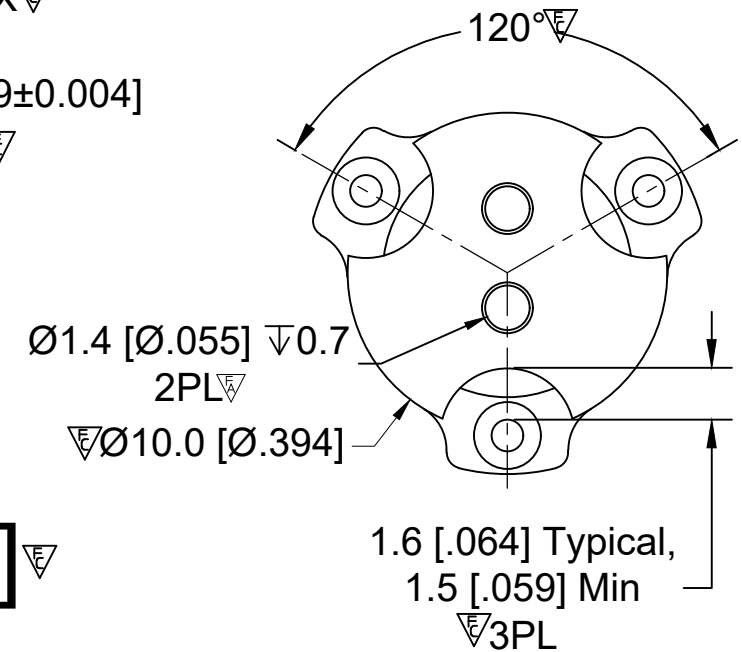
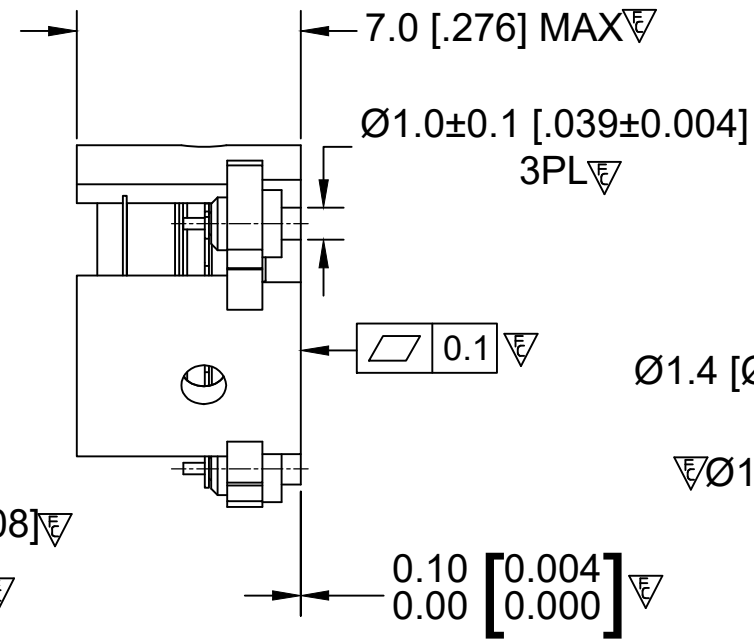
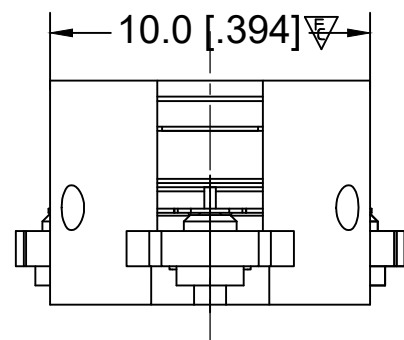
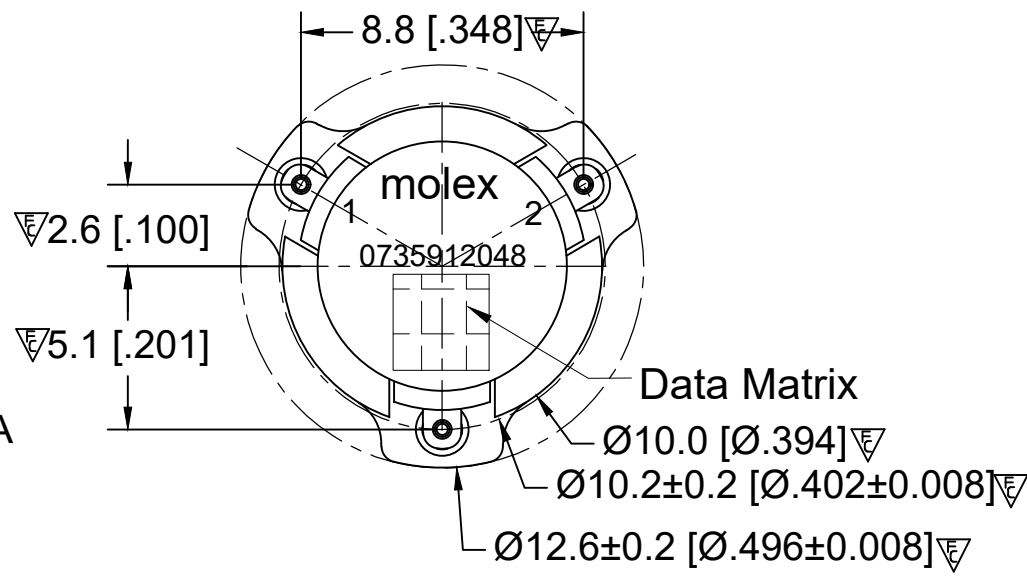


**RECOMMENDED LAND PATTERN :**

Zone A must be attached to heat sink. Thermal conductivity of intermediate layers between Zone A and heat sink must be better than 0.1 W / [°C x mm].



PCB Material :Rogers RO4350B,0.508mm thickness  
trace width 1.07mm wide.



BODY: CARBON STEEL, SILVER PLATED

RIGID PINS: COPPER, SILVER PLATED

NOTES:

- 1.STANDARD INPUT/OUTPUT IMPEDANCE 50 Ohm
- 2.LEAD FREE, NO Nd MATERIAL, BeO FREE
- 3.THE DIMENSION OF DATE MATRIX IS 3X3MM INFORMATION INCLUDING WORK ORDER NUMBER-SERIAL NUMBER-MATERIAL NUMBER
- 4.THIS PART COMPLIES WITH ALL RoHS REQUIREMENTS

**ELECTRICAL SPECIFICATIONS :**

Frequency Range	: 3300~3800 MHz
Insertion Loss	: 0.25 dB Max@25°C,0.3 dB Max
Isolation	: 20 dB Min
Return Loss	: 20 dB Min
Average Power	: 20 W (CW)
Peak Power	: 160 W
FMD IMD3(2 x10W,1 MHz space):	-65 dBc Max
2nd Harmonic(20W CW)	: 50dBc min
3rd Harmonic(20W CW)	: 60dBc min
Operating Temperature	: -40°C to +110°C
Storage Temperature	: -65°C to +155°C
Direction	: CW

**ENG PART#:802-330-380-VP040**

FUNCTIONAL SYMBOLS	THIS DRAWING CONTAINS INFORMATION THAT IS PROPRIETARY TO MOLEX ELECTRONIC TECHNOLOGIES, LLC AND SHOULD NOT BE USED WITHOUT WRITTEN PERMISSION		CURRENT REV DESC:		molex
	DIMENSION UNITS	SCALE	CHANGE ECTR RESTRICTED ***		
△A=0	MM	1:1			SMSJ CIRCULATOR/3300-3800MHZ/CW
△E=0	GENERAL TOLERANCES (UNLESS SPECIFIED)				
△P=0					PRODUCT CUSTOMER DRAWING
DIVISIONAL SYMBOLS					
					DOCUMENT NUMBER
					735912048
					PSD 000 A1
					SHEET NUMBER
					1 OF 1
					GENERAL MARKET
					1 OF 1