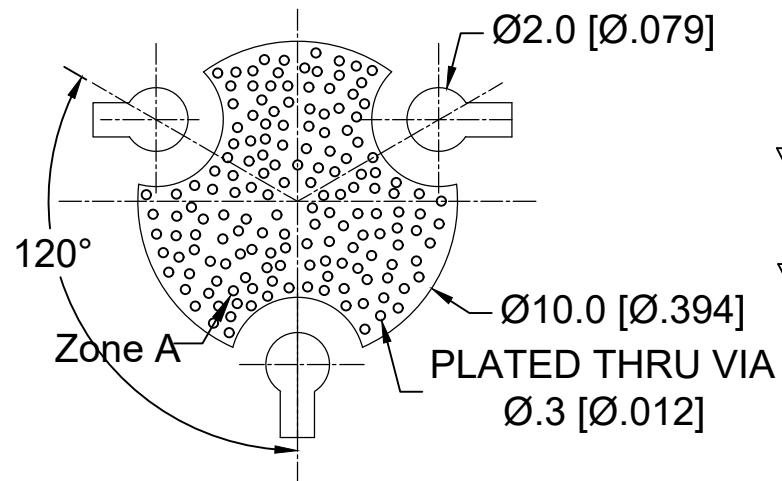
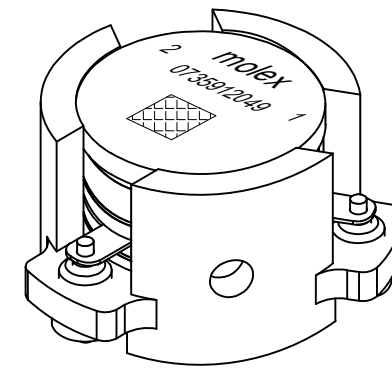
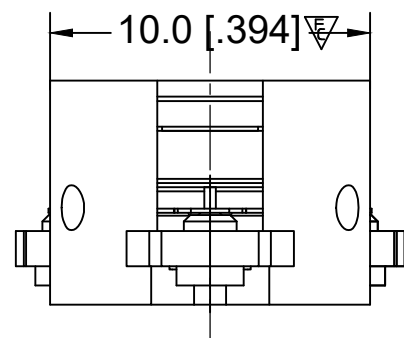
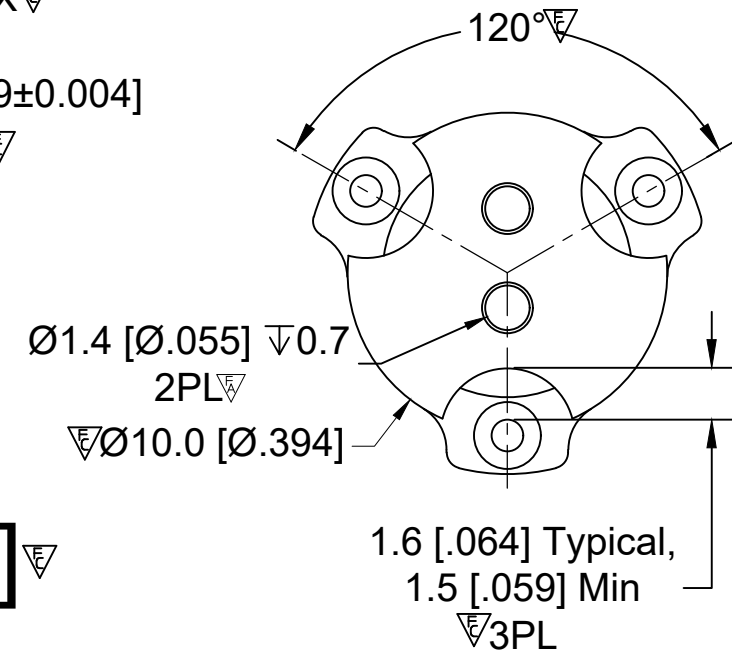
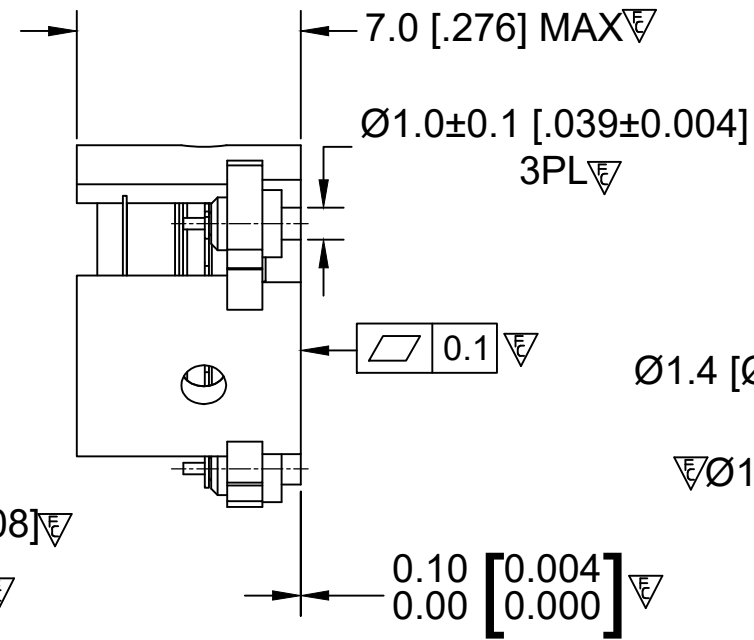
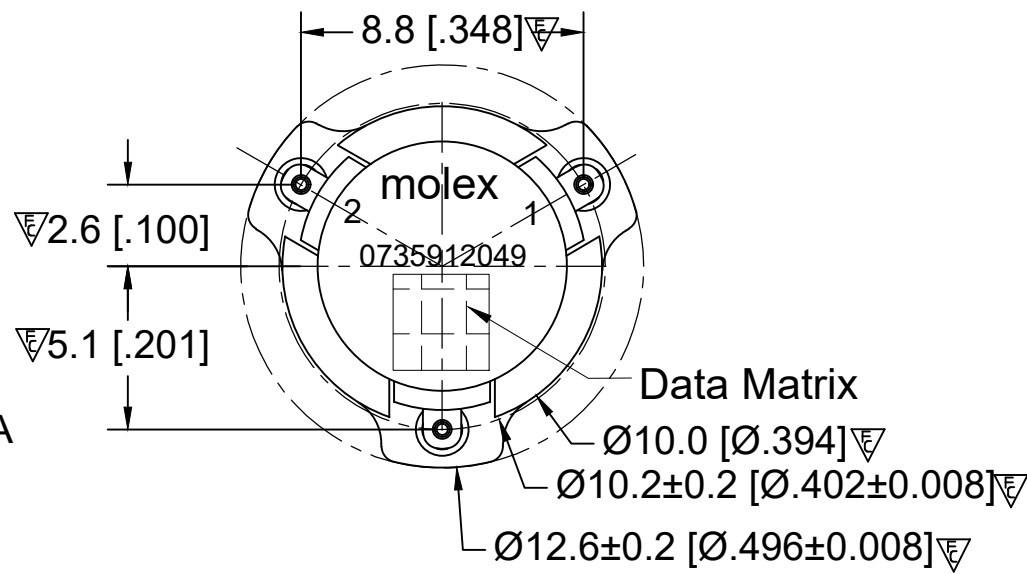


**RECOMMENDED LAND PATTERN :**

Zone A must be attached to heat sink. Thermal conductivity of intermediate layers between Zone A and heat sink must be better than 0.1 W / [°C x mm].



PCB Material :Rogers RO4350B,0.508mm thickness  
trace width 1.07mm wide.



**ELECTRICAL SPECIFICATIONS :**

- Frequency Range : 3300~3800 MHz
- Insertion Loss : 0.25 dB Max@25°C,0.3 dB Max
- Isolation : 20 dB Min
- Return Loss : 20 dB Min
- Average Power : 20 W (CW)
- Peak Power : 160 W
- FMD IMD3(2 x10W,1 MHz space): -65 dBc Max
- 2nd Harmonic(20W CW) : 50dBc min
- 3rd Harmonic(20W CW) : 60dBc min
- Operating Temperature : -40°C to +110°C
- Storage Temperature : -65°C to +155°C
- Direction : CCW

BODY: CARBON STEEL, SILVER PLATED

RIGID PINS: COPPER, SILVER PLATED

NOTES:

- 1.STANDARD INPUT/OUTPUT IMPEDANCE 50 Ohm
- 2.LEAD FREE, NO Nd MATERIAL, BeO FREE
- 3.THE DIMENSION OF DATE MATRIX IS 3X3MM INFORMATION INCLUDING WORK ORDER NUMBER-SERIAL NUMBER-MATERIAL NUMBER
- 4.THIS PART COMPLIES WITH ALL RoHS REQUIREMENTS

**ENG PART#:812-330-380-VP040**

THIS DRAWING CONTAINS INFORMATION THAT IS PROPRIETARY TO MOLEX ELECTRONIC TECHNOLOGIES, LLC AND SHOULD NOT BE USED WITHOUT WRITTEN PERMISSION										
FUNCTIONAL SYMBOLS	DIMENSION UNITS	SCALE	CURRENT REV DESC:							
$\nabla_A=0$	MM	1:1	CHANGE ECTR RESTRICTED ***							
$\nabla_E=0$	GENERAL TOLERANCES (UNLESS SPECIFIED)		EC NO: 702316 DRWN: SREN05 2022/04/20 CHK'D: WWANG99 2022/04/21 APPR: HWANG186 2022/04/22							
$\nabla_P=0$	mm INCH									
DIVISIONAL SYMBOLS	4 PLACES	±0.005	±---	INITIAL REVISION: DRWN: SREN05 2021/11/15 APPR: HWANG186 2022/02/21						
	3 PLACES	±0.025	±---							
	2 PLACES	±0.13	±---	DOCUMENT NUMBER		DOC TYPE		DOC PART		
	1 PLACE	±0.2	±---	735912049		PSD		000		
	0 PLACES	±0.4	±---	REVISION		A1				
	ANGULAR TOL ± 1.5 °		DRAFT WHERE APPLICABLE MUST REMAIN WITHIN DIMENSIONS		THIRD ANGLE PROJECTION		DRAWING		SHEET NUMBER	
					A3-SIZE		73591		0735912049	
					MATERIAL NUMBER		CUSTOMER		GENERAL MARKET	