

6

5

4

3

2

1

D

D

C

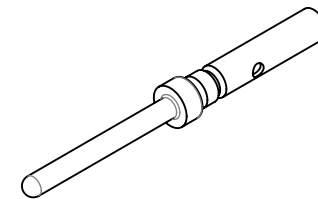
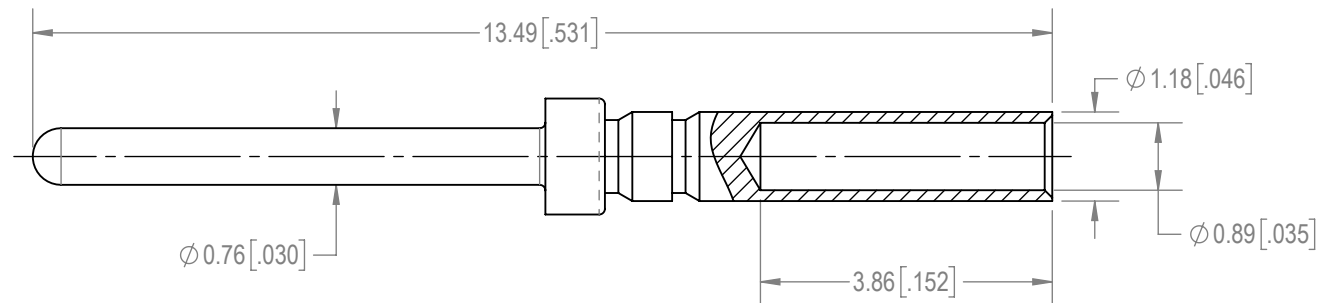
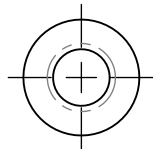
C

B



B

A

A

**NOTES:**

1. MATERIALS AND FINISH:
CONTACT: PRECISION MACHINED COPPER ALLOY, 1.27 μ [.000050] GOLD OVER NICKEL PLATE.
2. DETAILED PRODUCT, MECHANICAL AND ELECTRICAL INFORMATION IS AVAILABLE IN THE LATEST HIGH DENSITY D-SUB PRODUCT PUBLICATION AT CONNECTPOSITRONIC.COM.
3. CRIMPING TOOL INFORMATION IS AVAILABLE AT WWW.CONNECTPOSITRONIC.COM/CrimpToolCrosslist.
4. CONTACT IS COMPLIANT TO THE CURRENT RoHS DIRECTIVE.

BY YBK		CHK EB	3RD ANGLE 		<div>POSITRONIC BELIEVES THE DATA ON THE DRAWING TO BE RELIABLE. THE USER EMPLOYS SUCH INFORMATION AT HIS OWN DISCRETION AND RISK.</div> <div>POSITRONIC ASSUMES NO RESPONSIBILITY FOR RESULTS OBTAINED OR DAMAGES INCURRED FROM USE OF SUCH INFORMATION IN WHOLE OR IN PART.</div> <div> Positronic® CONNECTPOSITRONIC.COM</div>	
APR PA	RELEASED DATE: 2021-02-27		SCALE NTS			
TOLERANCES			PART NUMBER MC8022D/AA-15			SERIES DD
±0.03mm [.001 INCHES]FOR MALE CONTACT MATING DIAMETERS ±0.08mm [.003 INCHES] FOR CONTACT TERMINATION DIAMETERS ±0.13mm [.005 INCHES]FOR ALL OTHER DIAMETERS ±0.38mm [.015 INCHES]FOR ALL OTHER DIMENSIONS ±5° FOR ALL ANGLES DIMENSION ARE IN MILLIMETERS [INCHES]			TITLE MC8022D/AA-15			
			CREATED ON: 2021-02-19	SHEET SHEET 1 OF 1		REV A

6

5

4

3

2

1