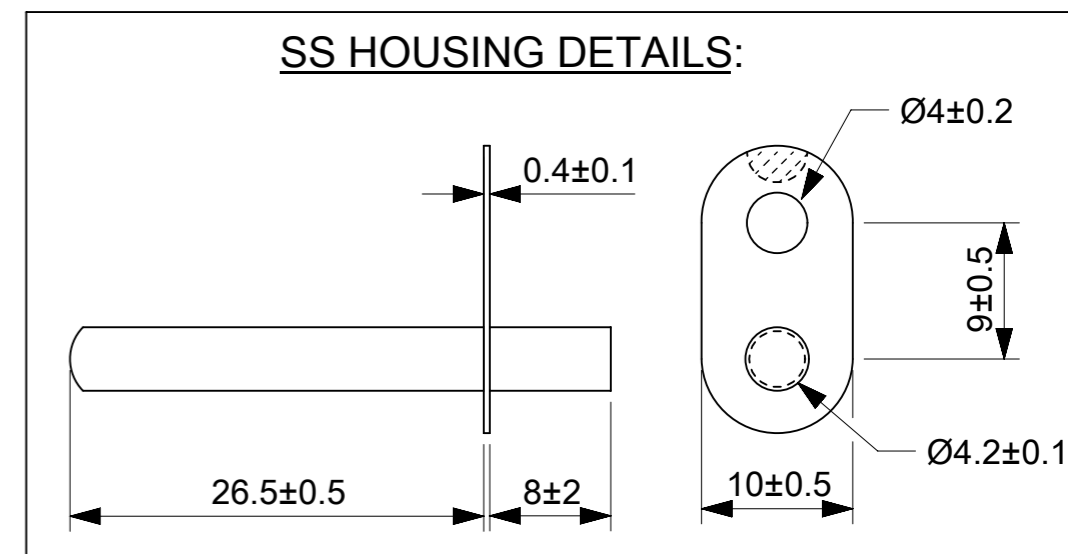


NOTES:

1. RESISTANCE @ 25°C : 50KΩ ± 1%
2. BETA VALUE (0/50°C) : 4035K ± 1%
3. OPERATING TEMPERATURE RANGE : -40°C TO +250°C.
4. THERMAL TIME CONSTANT : 15SEC IN WATER
5. VOLTAGE BREAKDOWN STRENGTH : 1500V AC FOR 3SEC.
6. INSULATION RESISTANCE : A MINIMUM OF 100MΩ @ 500VOLTS DC.
7. DISSIPATION FACTOR : 1mW/°C.
8. LASER MARKING "MOLEX-DATE CODE(MM/YY)" & "XXK(R25-value) XXXX(B-value)"



| | | | | | | | | | | |
|---|---|----------------------------|-----------------------------|--------|-----------------|----------------|-----------------|----------|----------|--------------|
| THIS DRAWING CONTAINS INFORMATION THAT IS PROPRIETARY TO MOLEX ELECTRONIC TECHNOLOGIES, LLC AND SHOULD NOT BE USED WITHOUT WRITTEN PERMISSION | | | | | | | | | | |
| FUNCTIONAL SYMBOLS | THIS DRAWING CONTAINS INFORMATION THAT IS PROPRIETARY TO MOLEX ELECTRONIC TECHNOLOGIES, LLC AND SHOULD NOT BE USED WITHOUT WRITTEN PERMISSION | SCALE | CURRENT REV DESC: | | | | | | | |
| | mm | NTS | | | | | | | | |
| DIVISIONAL SYMBOLS | GENERAL TOLERANCES (UNLESS SPECIFIED) | | EC NO: 727818 | | | | | | | |
| | ANGULAR TOL ± ° | | DRWN: NANDAK 2022/11/09 | | | | | | | |
| | 4 PLACES ± | | CHK'D: RBBHASKAR 2022/11/15 | | | | | | | |
| | 3 PLACES ± | | APPR: RBBHASKAR 2022/11/15 | | | | | | | |
| | 2 PLACES ± | | INITIAL REVISION: | | | | | | | |
| 1 PLACE ± | | DRWN: RAVIKM 2022/01/30 | | | | | | | | |
| 0 PLACES ± | | APPR: RBBHASKAR 2022/02/10 | | | | | | | | |
| DRAFT WHERE APPLICABLE MUST REMAIN WITHIN DIMENSIONS | | THIRD ANGLE PROJECTION | DRAWING | SERIES | MATERIAL NUMBER | CUSTOMER | DOCUMENT NUMBER | DOC TYPE | DOC PART | REVISION |
| | | | A3-SIZE | 218537 | 2185373917 | GENERAL MARKET | 2185373917 | PSD | 000 | B3 |
| | | | | | | | | | | SHEET NUMBER |
| | | | | | | | | | | 1 OF 2 |

RESISTANCE VS TEMPERATURE CHARACTERISTICS

| TEMP(°C) | Rmin(KΩ) | Rnom(KΩ) | Rmax(KΩ) |
|----------|----------|----------|----------|
| -40 | 1689.446 | 1768.460 | 1850.985 |
| -35 | 1206.272 | 1258.400 | 1312.649 |
| -30 | 887.056 | 922.520 | 959.306 |
| -25 | 664.871 | 689.441 | 714.849 |
| -20 | 497.166 | 514.028 | 531.408 |
| -15 | 374.123 | 385.702 | 397.600 |
| -10 | 281.815 | 289.707 | 297.790 |
| -5 | 214.745 | 220.154 | 225.676 |
| 0 | 164.268 | 167.950 | 171.697 |
| 5 | 126.975 | 129.484 | 132.029 |
| 10 | 98.953 | 100.654 | 102.374 |
| 15 | 77.932 | 79.081 | 80.239 |
| 20 | 61.896 | 62.663 | 63.432 |
| 25 | 49.500 | 50.000 | 50.500 |
| 30 | 39.644 | 40.133 | 40.623 |
| 35 | 31.919 | 32.382 | 32.848 |
| 40 | 25.824 | 26.254 | 26.688 |
| 45 | 20.991 | 21.384 | 21.782 |
| 50 | 16.731 | 17.082 | 17.439 |
| 55 | 14.063 | 14.383 | 14.709 |
| 60 | 11.593 | 11.880 | 12.172 |
| 65 | 9.605 | 9.861 | 10.123 |
| 70 | 8.000 | 8.228 | 8.462 |
| 75 | 6.700 | 6.903 | 7.112 |
| 80 | 5.643 | 5.824 | 6.010 |
| 85 | 4.782 | 4.943 | 5.109 |
| 90 | 4.088 | 4.232 | 4.382 |
| 95 | 3.509 | 3.638 | 3.772 |
| 100 | 3.022 | 3.138 | 3.258 |
| 105 | 2.609 | 2.713 | 2.821 |
| 110 | 2.258 | 2.351 | 2.448 |
| 115 | 1.957 | 2.041 | 2.129 |
| 120 | 1.699 | 1.775 | 1.853 |
| 125 | 1.478 | 1.545 | 1.616 |
| 130 | 1.287 | 1.347 | 1.411 |
| 135 | 1.122 | 1.177 | 1.234 |
| 140 | 0.980 | 1.029 | 1.081 |
| 145 | 0.858 | 0.902 | 0.948 |
| 150 | 0.752 | 0.792 | 0.834 |

| TEMP(°C) | Rmin(KΩ) | Rnom(KΩ) | Rnom(KΩ) |
|----------|----------|----------|----------|
| 155 | 0.6592 | 0.695 | 0.7325 |
| 160 | 0.5856 | 0.618 | 0.6523 |
| 165 | 0.5222 | 0.552 | 0.583 |
| 170 | 0.4671 | 0.494 | 0.5226 |
| 175 | 0.4189 | 0.444 | 0.4697 |
| 180 | 0.3765 | 0.399 | 0.423 |
| 185 | 0.3391 | 0.36 | 0.3818 |
| 190 | 0.3059 | 0.325 | 0.3452 |
| 195 | 0.2765 | 0.294 | 0.3126 |
| 200 | 0.2503 | 0.266 | 0.2835 |
| 205 | 0.227 | 0.242 | 0.2576 |
| 210 | 0.2061 | 0.22 | 0.2344 |
| 215 | 0.1875 | 0.2 | 0.2136 |
| 220 | 0.1707 | 0.182 | 0.1949 |
| 225 | 0.1558 | 0.167 | 0.1781 |
| 230 | 0.1425 | 0.153 | 0.1632 |
| 235 | 0.1306 | 0.14 | 0.1499 |
| 240 | 0.1198 | 0.129 | 0.1378 |
| 245 | 0.1103 | 0.118 | 0.127 |
| 250 | 0.1018 | 0.109 | 0.1174 |

| | | | |
|--------------------|---|-----------------------------|--|
| FUNCTIONAL SYMBOLS | THIS DRAWING CONTAINS INFORMATION THAT IS PROPRIETARY TO MOLEX ELECTRONIC TECHNOLOGIES, LLC AND SHOULD NOT BE USED WITHOUT WRITTEN PERMISSION | | |
| | DIMENSION UNITS | SCALE | CURRENT REV DESC: |
| $\nabla_A = 0$ | mm | NTS | <p>molex</p> <p>GLASS NTC MOUNTING -50K±1%,B4035,L100</p> <p>PRODUCT CUSTOMER DRAWING</p> |
| $\nabla_E = 0$ | GENERAL TOLERANCES (UNLESS SPECIFIED) | | |
| $\nabla_V = 0$ | ANGULAR TOL ± ° | | |
| DIVISIONAL SYMBOLS | 4 PLACES ± | EC NO: 727818 | |
| | 3 PLACES ± | DRWN: NANDAK 2022/11/09 | |
| | 2 PLACES ± | CHK'D: RBBHASKAR 2022/11/15 | |
| | 1 PLACE ± | APPR: RBBHASKAR 2022/11/15 | |
| | 0 PLACES ± | INITIAL REVISION: | |
| | | DRWN: RAVIKM 2022/01/30 | |
| | | APPR: RBBHASKAR 2022/02/10 | |
| | DRAFT WHERE APPLICABLE MUST REMAIN WITHIN DIMENSIONS | THIRD ANGLE PROJECTION | DOCUMENT NUMBER |
| | | DRAWING | 2185373917 |
| | | SERIES | PSD 000 B3 |
| | | MATERIAL NUMBER | 2185373917 |
| | | CUSTOMER | GENERAL MARKET |
| | | SHEET NUMBER | 2 OF 2 |