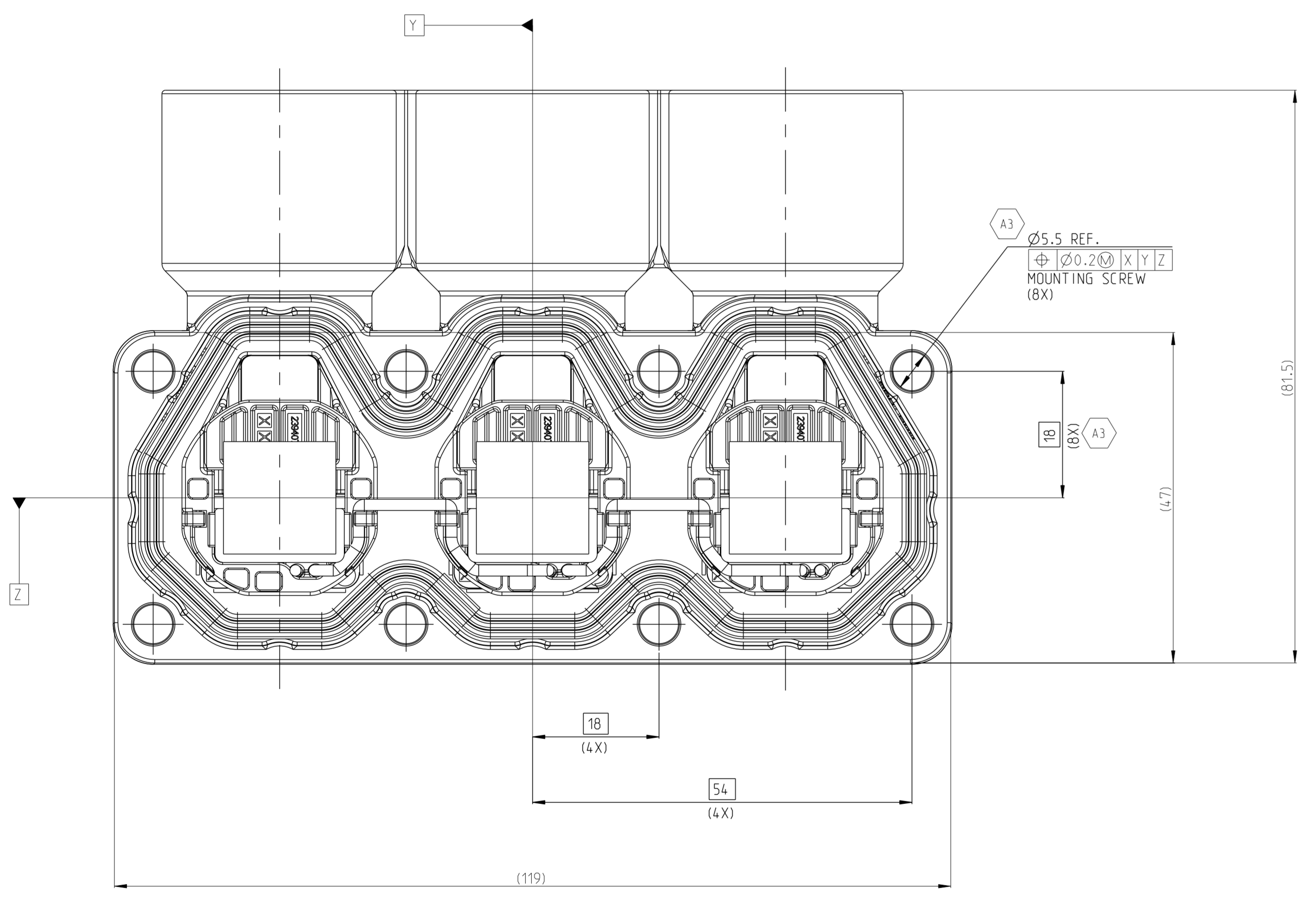
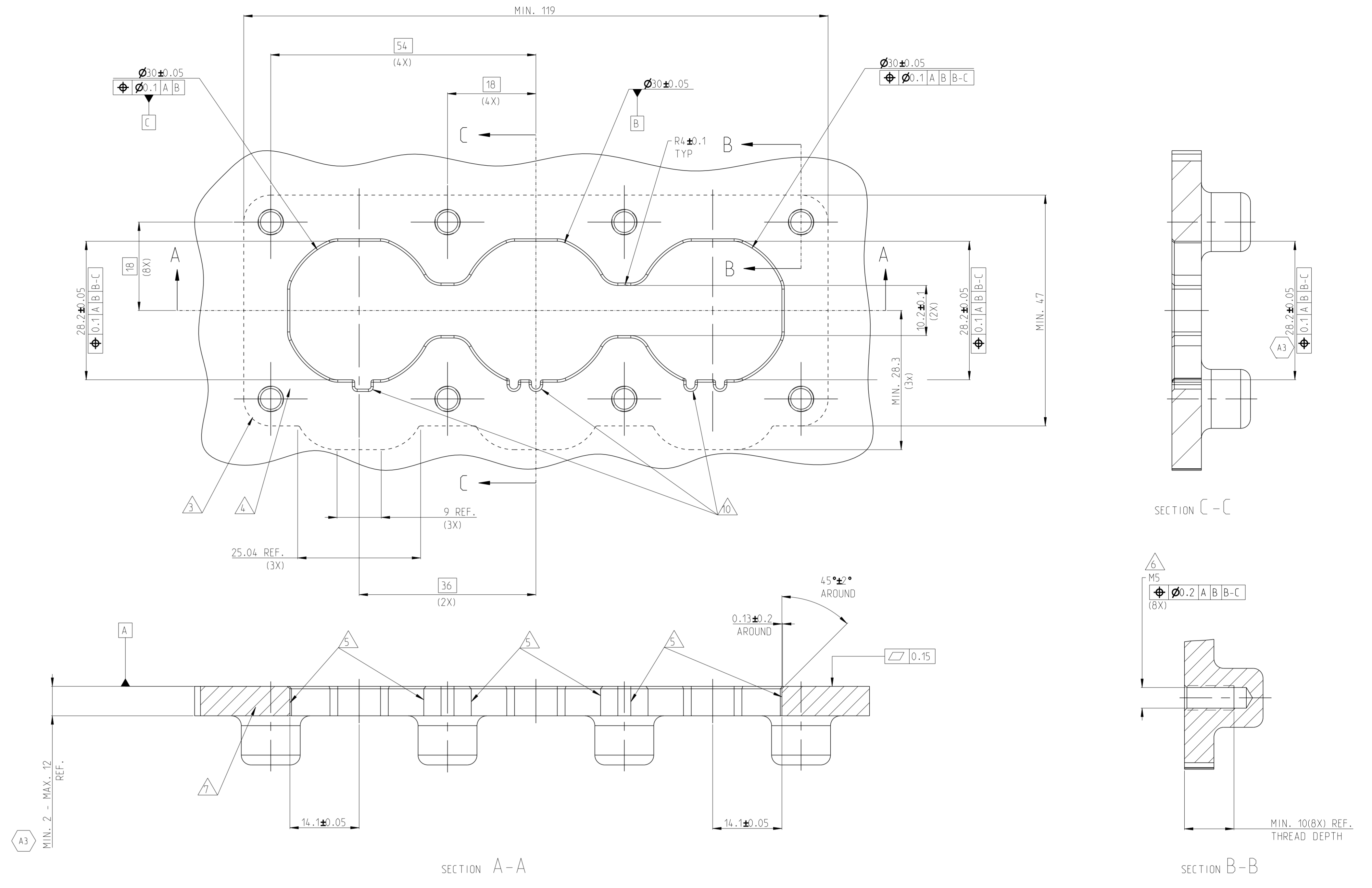
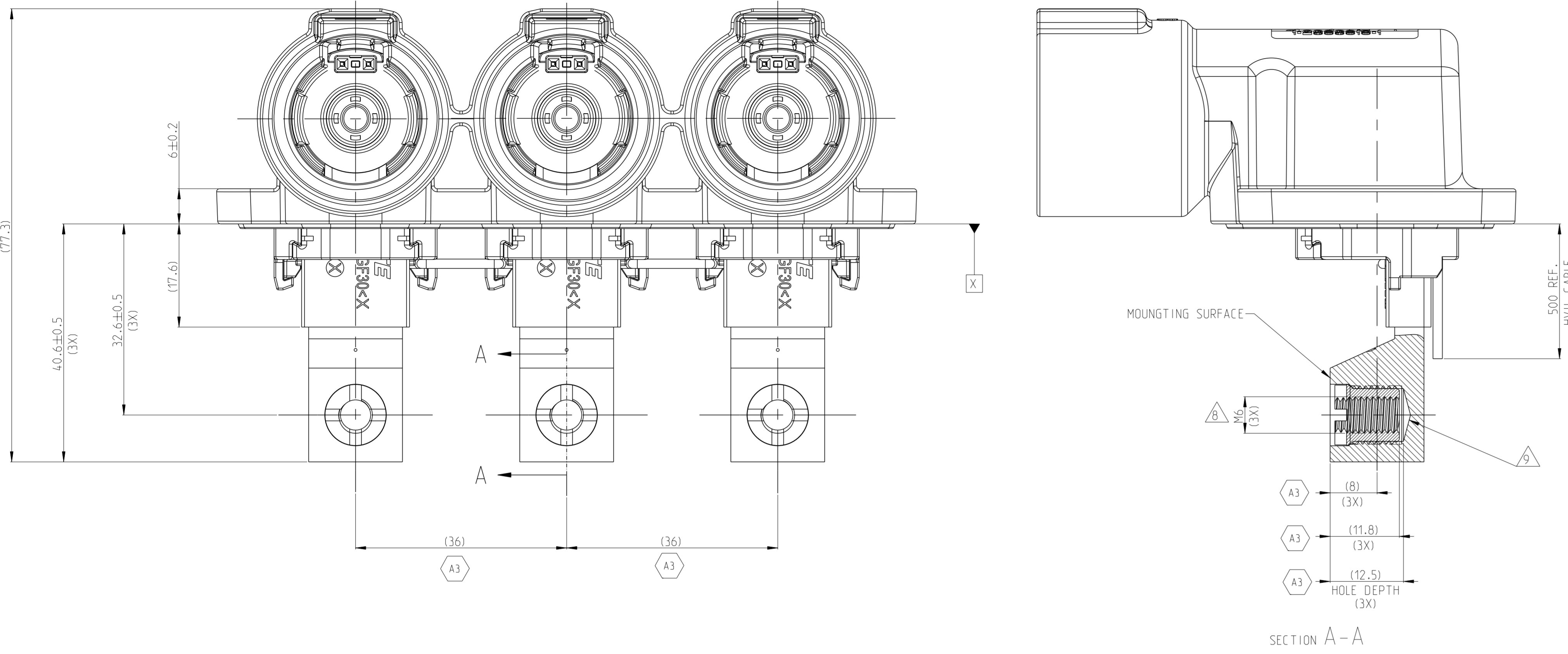
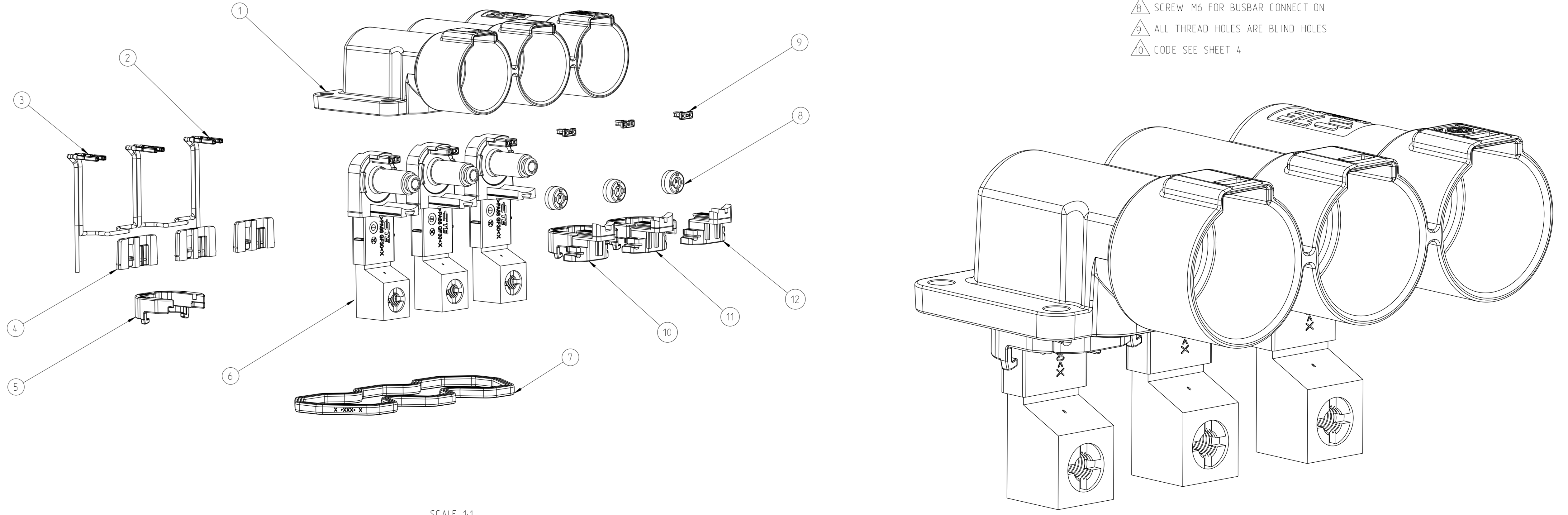


REVISIONS			
REV	DATE	BY	APPD
A2	26AUG2021	N.S.	I.Y.
A3	29AUG2022	C.C.	Z.Z.

ADAPTER PLATE - HVP-HD1000 3POS HEADER INTERFACE



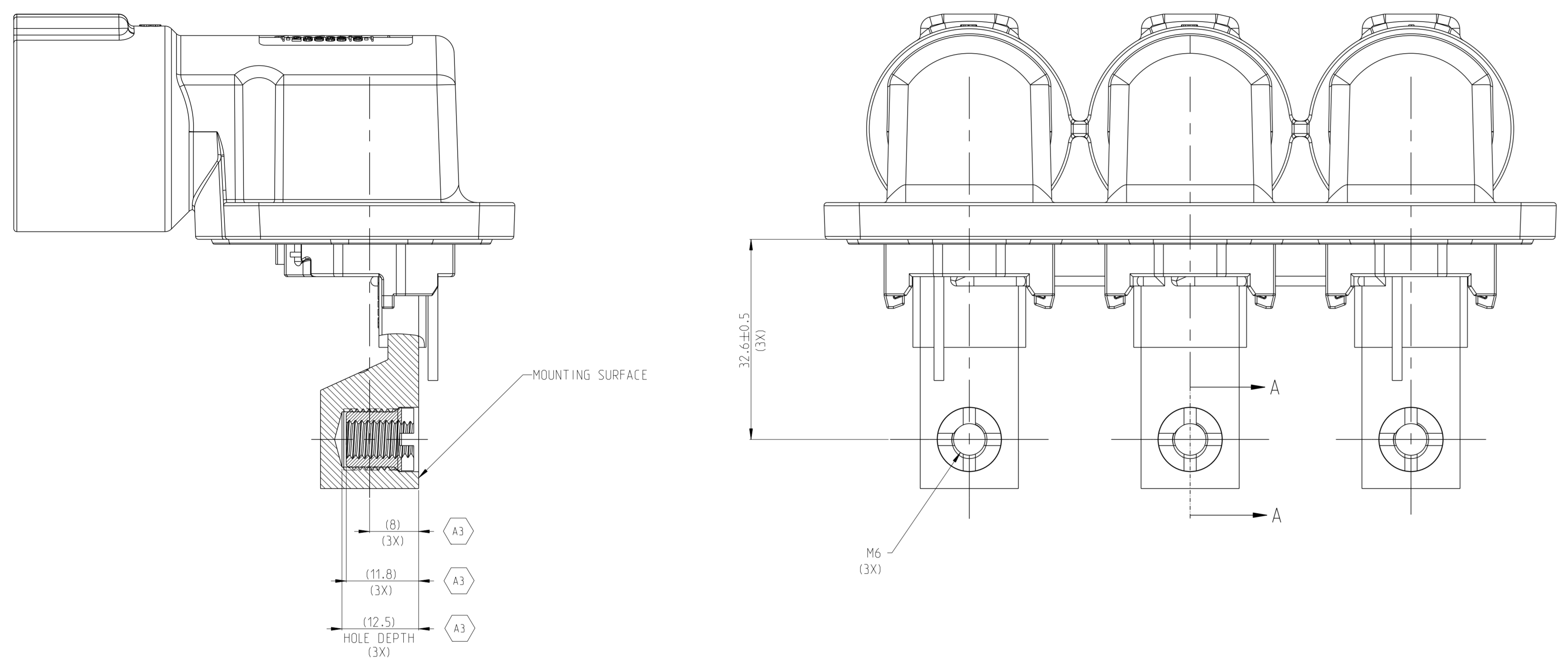
- 1. MATING CONNECTOR REFER TO DRAWING 2394115
- △ CODING VARIANT
- △ FREE SPACE FOR HEADER
- △ SEALING AREA: NO BURR, TOOL PARTING, SHRINKAGE. CAVITIES AND GATE MARKS PERMITTED. SURFACE ROUGHNESS: Ra<=1.6
- △ DRAFT ANGLE UP TO 0.5° PERMITTED
- △ MOUNTING SCREW MS. SCREW TYPE UP TO MANUFACTURER. DRILL HOLE DESIGN ACCORDING TO SCREW TYPE
- △ MATERIAL: CORROSION RESISTANT. ELECTROCONDUCTIVE
- △ SCREW M6 FOR BUSBAR CONNECTION
- △ ALL THREAD HOLES ARE BLIND HOLES
- △ CODE SEE SHEET 4



TE-ASSY-NO.	CODE	DESCRIPTION	DESCRIPTION	CODE	MATERIAL	SURFACE COLOR	WEIGHT (g)	QTY	ITEM
2394072-4	K/L/M	3POS,PIN DIA 10.0 HDR ASSY,90DEG	CODE HOUSING	M	PA66-GF	AQUA RED	1	12	
			CODE HOUSING	L	PA66-GF	AQUA BROWN	1	11	
			CODE HOUSING	K	PA66-GF	AQUA GREEN	1	10	
			FOLLOW	-	-	-	-	1-9	
2394072-3	G/H/J	3POS,PIN DIA 10.0 HDR ASSY,90DEG	CODE HOUSING	J	PA66-GF	DRANGE	1	12	
			CODE HOUSING	H	PA66-GF	YELLOW	1	11	
			CODE HOUSING	G	PA66-GF	RED	1	10	
			FOLLOW	-	-	-	-	1-9	
2394072-2	D/E/F	3POS,PIN DIA 10.0 HDR ASSY,90DEG	CODE HOUSING	F	PA66-GF	BROWN	1	12	
			CODE HOUSING	E	PA66-GF	GREEN	1	11	
			CODE HOUSING	D	PA66-GF	PURPLE	1	10	
			FOLLOW	-	-	-	-	1-9	
2394072-1	A/B/C	3POS,PIN DIA 10.0 HDR ASSY,90DEG	CODE HOUSING	C	PA66-GF	BLUE	1	12	
			CODE HOUSING	B	PA66-GF	NATURE	1	11	
			CODE HOUSING	A	PA66-GF	BLACK	1	10	
			HEADER TPA	-	PA66-GF	RED	3	9	
			FINGER PROTECTION CAP	-	PA66-GF	BLACK	3	8	
			FACE SEAL	-	SILICONE	RED	1	7	
			BUSBAR OVERMOLD,FRONT SIDE	-	-	-	3	6	
			OUTER HOUSING	-	PA66-GF	BLACK	3	5	
			INNER HOUSING	-	PA66-GF	BLACK	3	4	
			HV INTERLOCK CABLE,BRIDGED	-	-	-	2	3	
HV INTERLOCK CABLE	-	-	-	2	2				
HEADER HOUSING 90DEG,3POS	-	AL-ALLOY	NICKEL PLATED	1	1				

THIS DRAWING IS A CONTROLLED DOCUMENT. DATE: 26AUG2021. DRAWN BY: SHI. CHECKED BY: L.L. APPROVED BY: Y.Y. PRODUCT SPEC: 3POS,PIN DIA 10.0 HDR ASSY,90DEG HVP-HD1000. APPLICATION SPEC: 114-160181. SCALE: 2:1. SHEET 1 OF 4. MATERIAL: SEE TABLE. FINISH SPEC: CUSTOMER DRAWING.

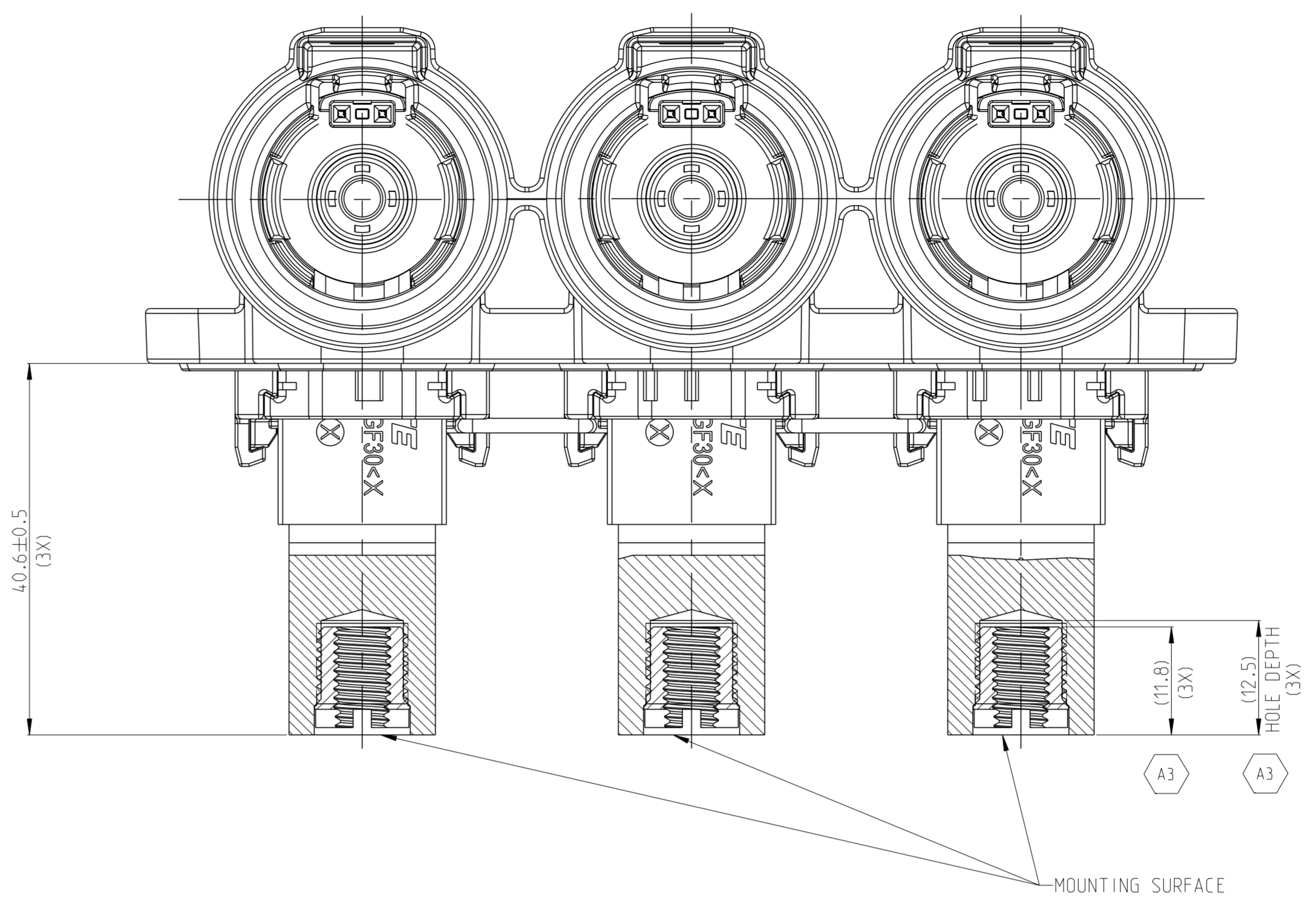
REVISIONS			
REV	DATE	DESCRIPTION	BY
1		SEE SHEET 1	



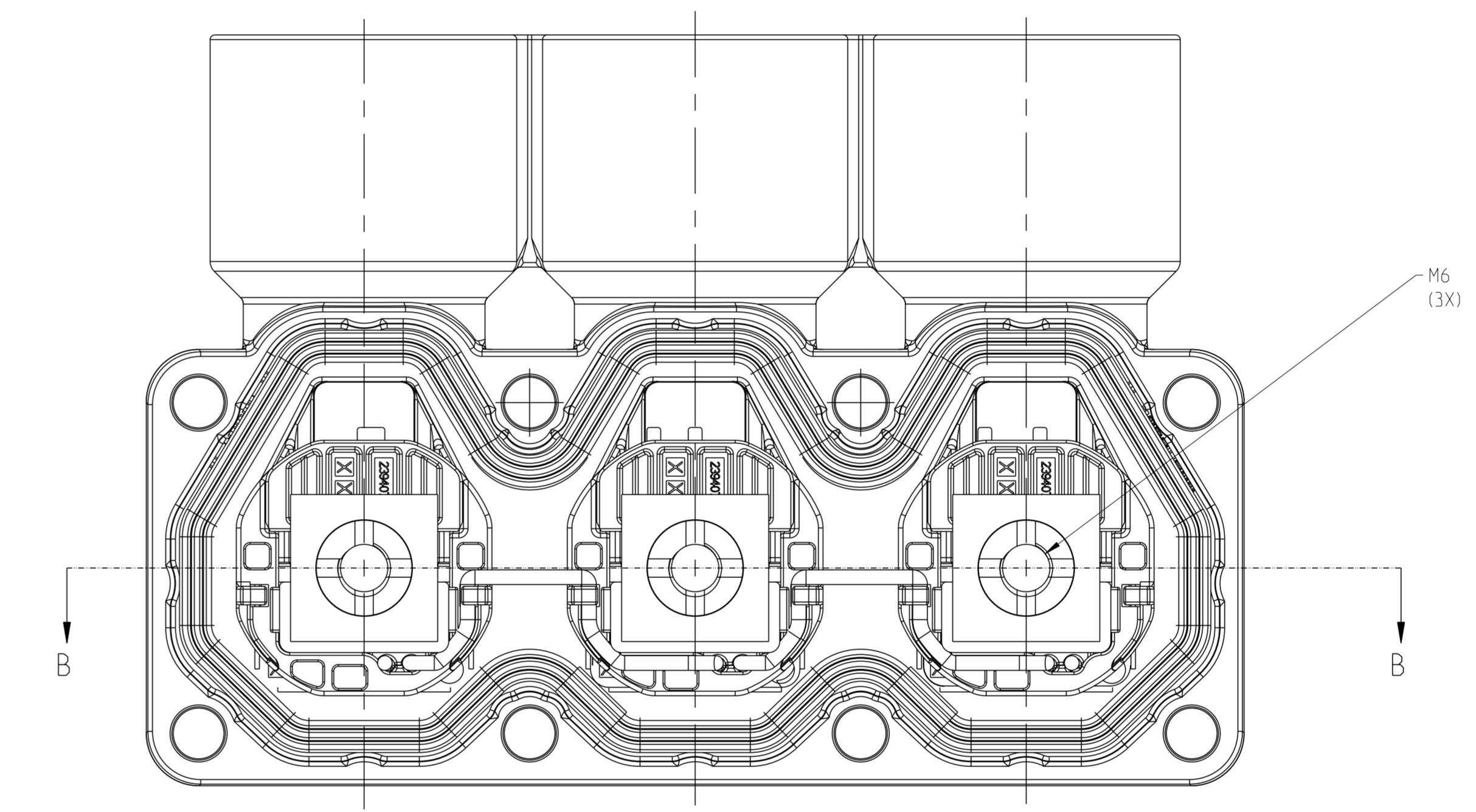
SECTION A-A

MISSING DIMENSIONS REFER TO 2394072-1

TE-ASSY-NO.	CODE	DESCRIPTION	DESCRIPTION	CODE	MATERIAL	SURFACE COLOR	WEIGHT (g)	QTY	ITEM
1-2394072-4	K/L/M	3POS.PIN DIA 10.0 HDR ASSY.90DEG	CODE HOUSING	M	PA66-GF	AQUA RED	(480)	1	12
			CODE HOUSING	L	PA66-GF	AQUA BROWN		1	11
			CODE HOUSING	K	PA66-GF	AQUA GREEN		1	10
			FOLLOW 1-2394072-1	-	-	-		-	1-9
1-2394072-3	G/H/J	3POS.PIN DIA 10.0 HDR ASSY.90DEG	CODE HOUSING	J	PA66-GF	ORANGE	(480)	1	12
			CODE HOUSING	H	PA66-GF	YELLOW		1	11
			CODE HOUSING	G	PA66-GF	RED		1	10
			FOLLOW 1-2394072-1	-	-	-		-	1-9
1-2394072-2	D/E/F	3POS.PIN DIA 10.0 HDR ASSY.90DEG	CODE HOUSING	F	PA66-GF	BROWN	(480)	1	12
			CODE HOUSING	E	PA66-GF	GREEN		1	11
			CODE HOUSING	D	PA66-GF	PURPLE		1	10
			FOLLOW 1-2394072-1	-	-	-		-	1-9
1-2394072-1	A/B/C	3POS.PIN DIA 10.0 HDR ASSY.90DEG	CODE HOUSING	C	PA66-GF	BLUE	(480)	1	12
			CODE HOUSING	B	PA66-GF	NATURE		1	11
			CODE HOUSING	A	PA66-GF	BLACK		1	10
			HEADER TPA	-	PA66-GF	RED		3	9
			FINGER PROTECTION CAP	-	PA66-GF	BLACK		3	8
			FACE SEAL	-	SILICONE	RED		1	7
			BUSBAR OVERMOLD BACK SIDE	-	-	-		3	6
			OUTER HOUSING	-	PA66-GF	BLACK		3	5
			INNER HOUSING	-	PA66-GF	BLACK		3	4
			HV INTERLOCK CABLE BRIDGED	-	-	-		2	3
			HV INTERLOCK CABLE	-	-	-		2	2
			HEADER HOUSING 90DEG.3POS	-	AL-ALLOY	NICKEL PLATED		1	1



SECTION B-B



MISSING DIMENSIONS REFER TO 2394072-1

TE-ASSY-NO.	CODE	DESCRIPTION	DESCRIPTION	CODE	MATERIAL	SURFACE COLOR	WEIGHT (g)	QTY	ITEM
2-2394072-4	K/L/M	3POS.PIN DIA 10.0 HDR ASSY.90DEG	CODE HOUSING	M	PA66-GF	AQUA RED	(480)	1	12
			CODE HOUSING	L	PA66-GF	AQUA BROWN		1	11
			CODE HOUSING	K	PA66-GF	AQUA GREEN		1	10
			FOLLOW 2-2394072-1	-	-	-		-	1-9
2-2394072-3	G/H/J	3POS.PIN DIA 10.0 HDR ASSY.90DEG	CODE HOUSING	J	PA66-GF	ORANGE	(480)	1	12
			CODE HOUSING	H	PA66-GF	YELLOW		1	11
			CODE HOUSING	G	PA66-GF	RED		1	10
			FOLLOW 2-2394072-1	-	-	-		-	1-9
2-2394072-2	D/E/F	3POS.PIN DIA 10.0 HDR ASSY.90DEG	CODE HOUSING	F	PA66-GF	BROWN	(480)	1	12
			CODE HOUSING	E	PA66-GF	GREEN		1	11
			CODE HOUSING	D	PA66-GF	PURPLE		1	10
			FOLLOW 2-2394072-1	-	-	-		-	1-9
2-2394072-1	A/B/C	3POS.PIN DIA 10.0 HDR ASSY.90DEG	CODE HOUSING	C	PA66-GF	BLUE	(480)	1	12
			CODE HOUSING	B	PA66-GF	NATURE		1	11
			CODE HOUSING	A	PA66-GF	BLACK		1	10
			HEADER TPA	-	PA66-GF	RED		3	9
			FINGER PROTECTION CAP	-	PA66-GF	BLACK		3	8
			FACE SEAL	-	SILICONE	RED		1	7
			BUSBAR OVERMOLD TOP SIDE	-	-	-		3	6
			OUTER HOUSING	-	PA66-GF	BLACK		3	5
			INNER HOUSING	-	PA66-GF	BLACK		3	4
			HV INTERLOCK CABLE BRIDGED	-	-	-		2	3
			HV INTERLOCK CABLE	-	-	-		2	2
			HEADER HOUSING 90DEG.3POS	-	AL-ALLOY	NICKEL PLATED		1	1

THIS DRAWING IS A CONTROLLED DOCUMENT.

TE Connectivity

3POS.PIN DIA 10.0 HDR ASSY.90DEG HVP-HD1000

10B-160341

114-160181

00779

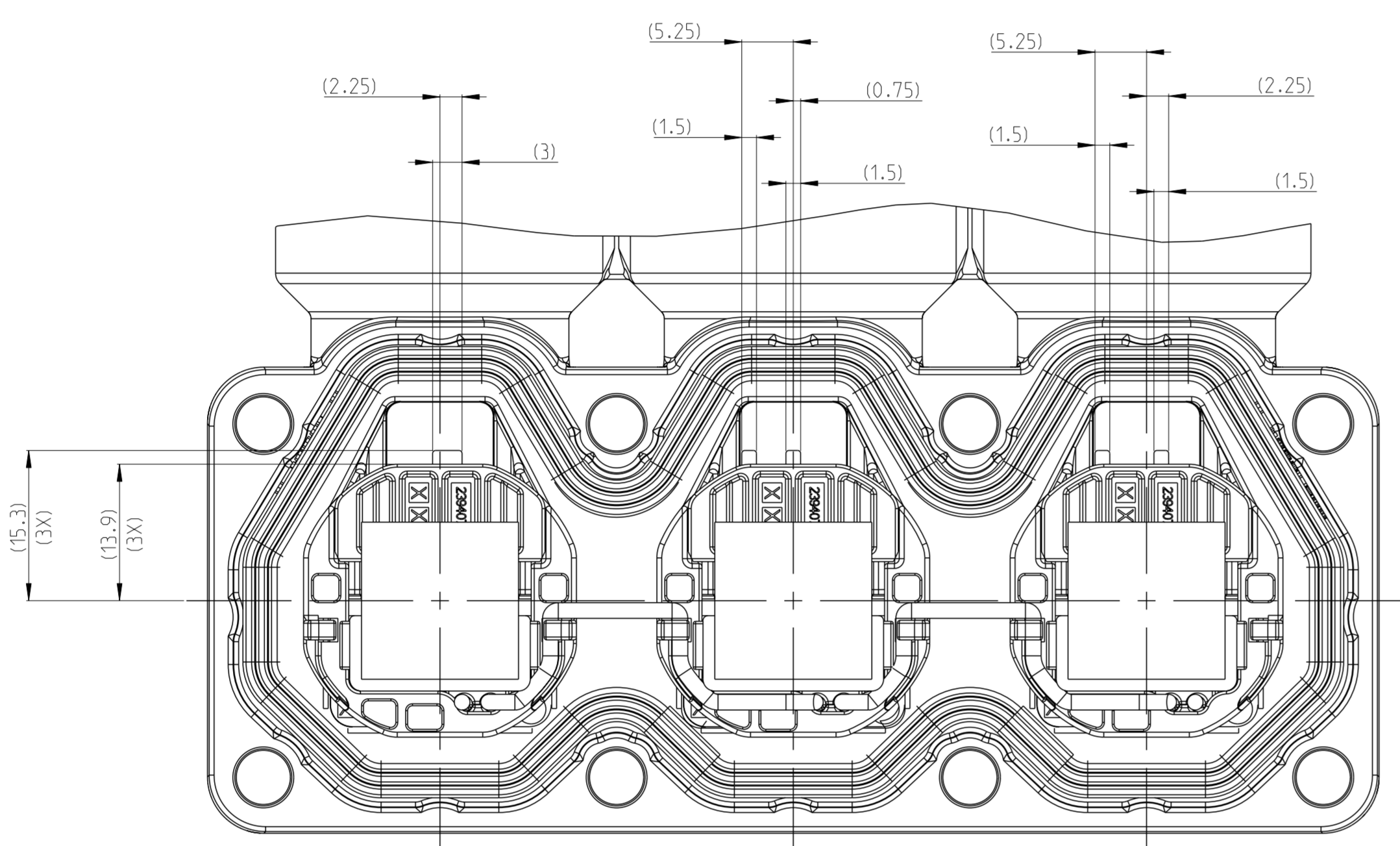
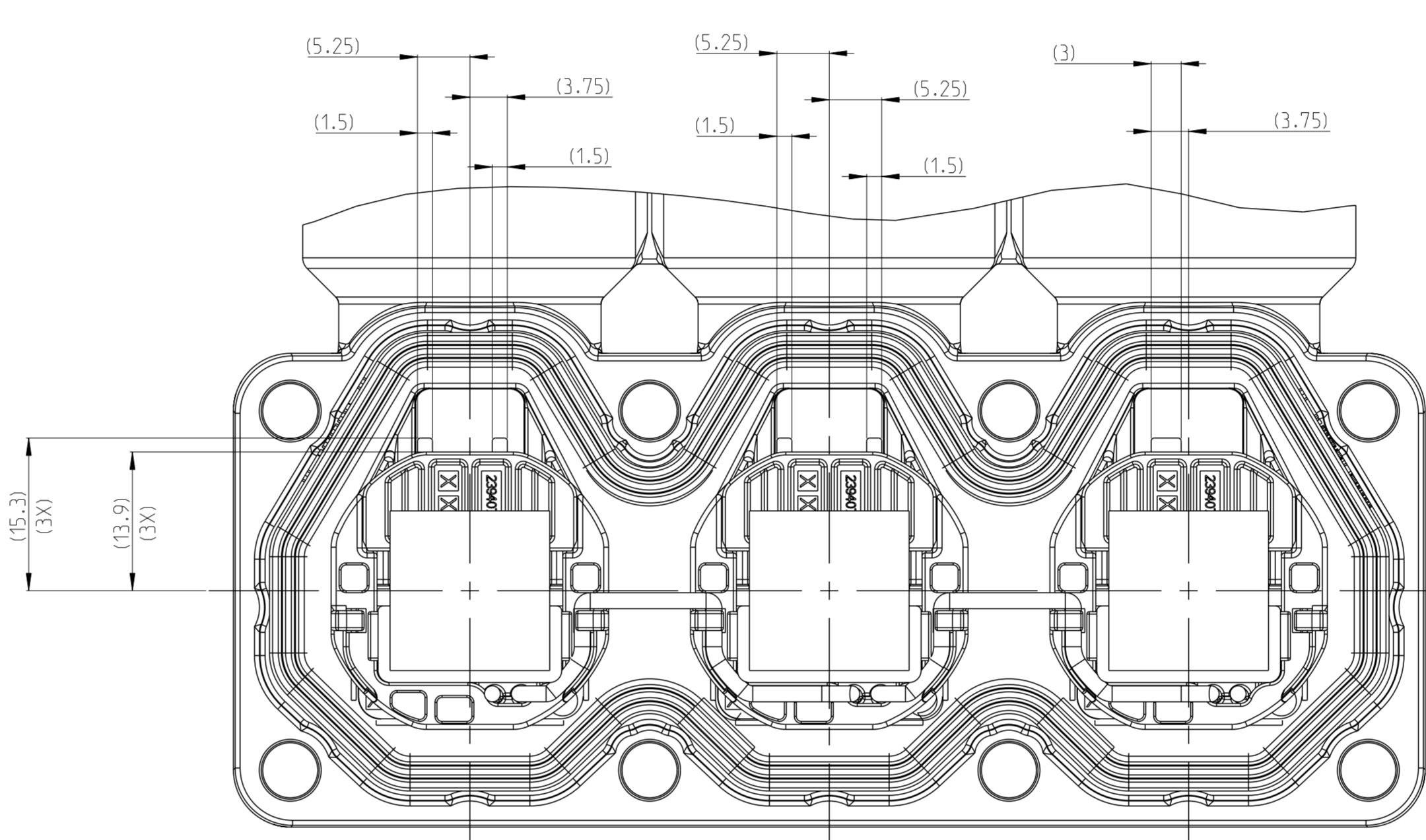
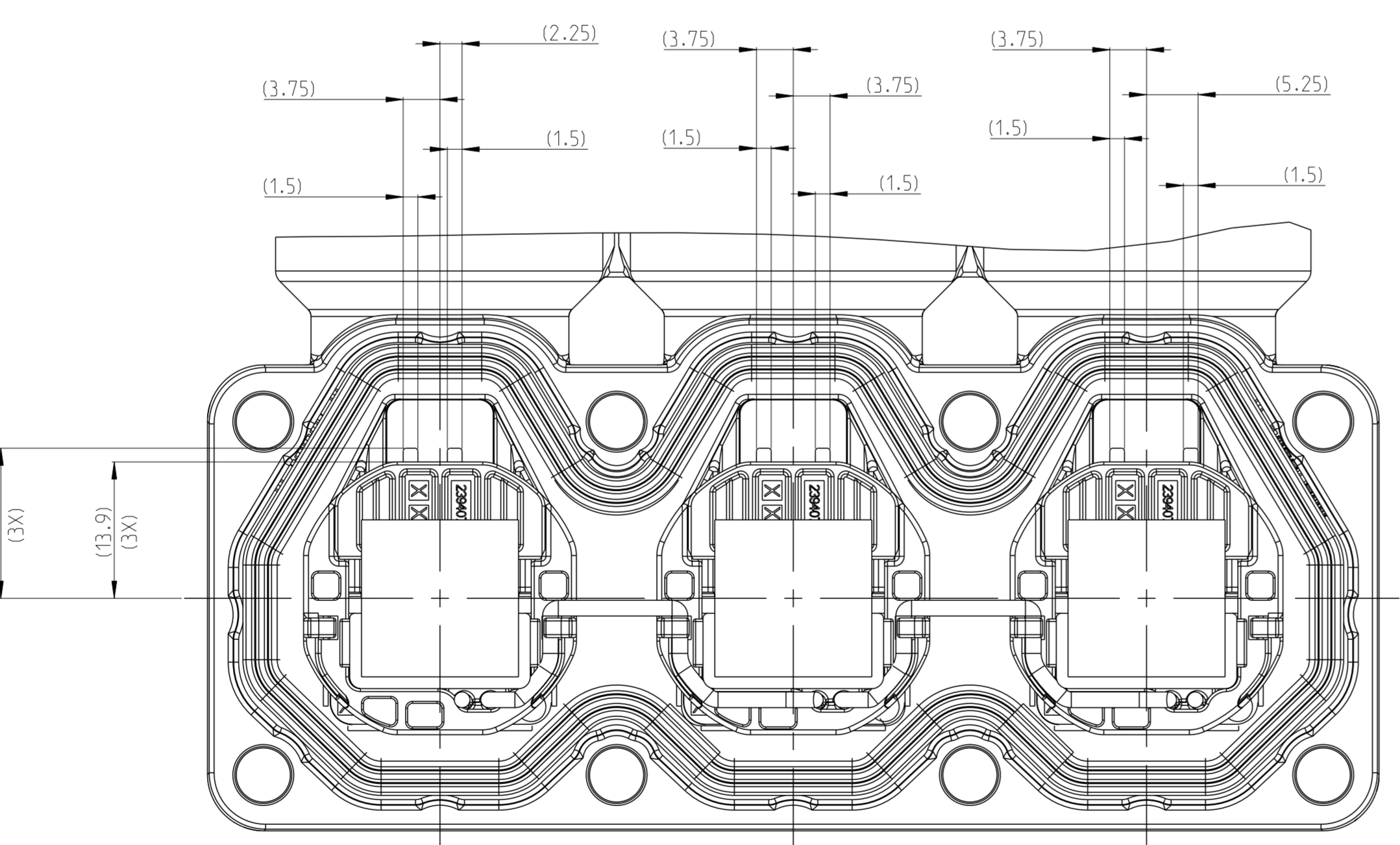
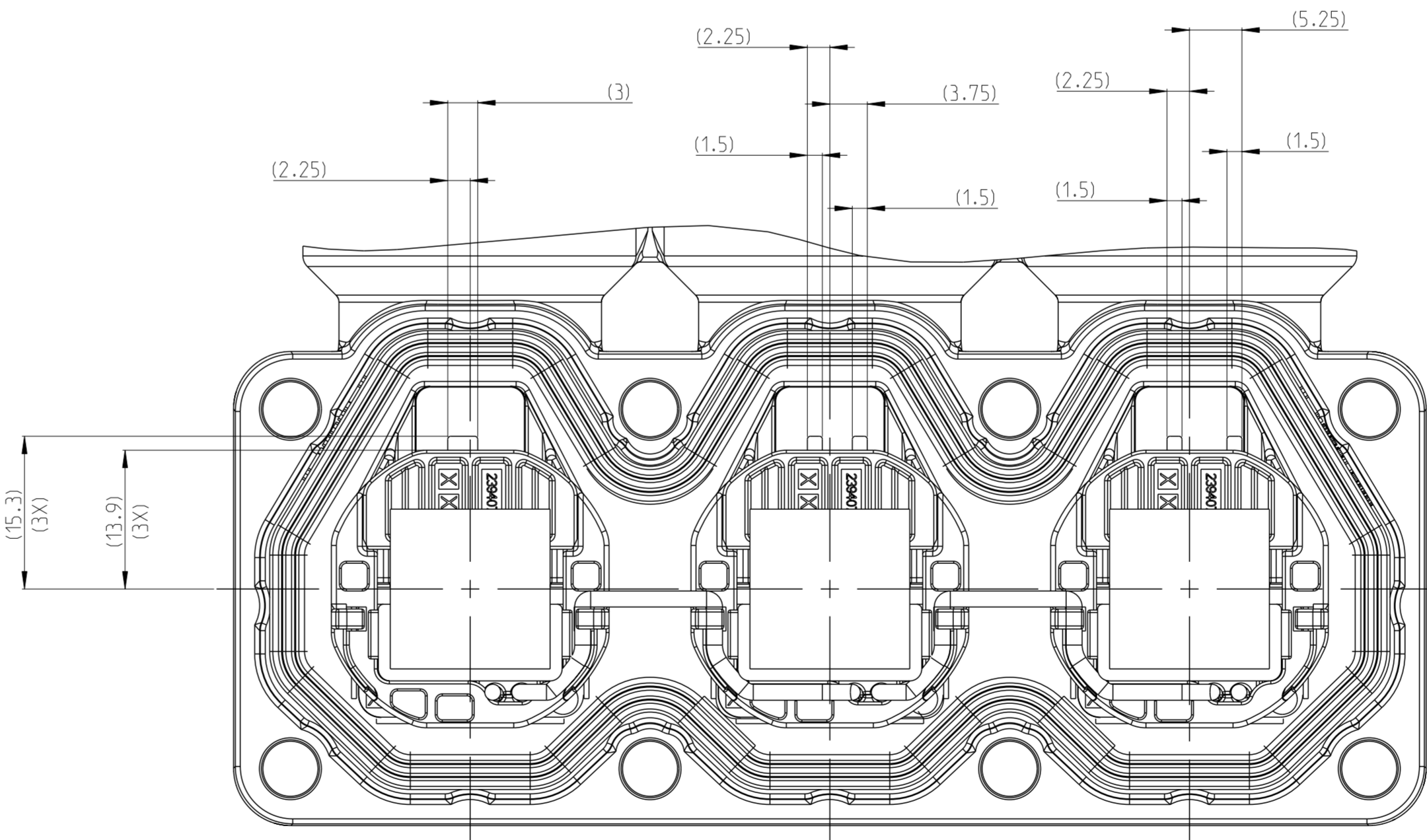
SCALE 2:1

SHEET 2 OF 4

REV A3

REVISIONS			
REV	DATE	BY	APPD
1			
SEE SHEET 1			

2

TABLE 5					
*-1			*-2		
CODE A	CODE B	CODE C	CODE D	CODE E	CODE F
					
CODE G	CODE H	CODE J	CODE K	CODE L	CODE M
					

printed on 08/26/2022 20:16:41 (HP) Standard Time from 1643955

THIS DRAWING IS A CONTROLLED DOCUMENT.

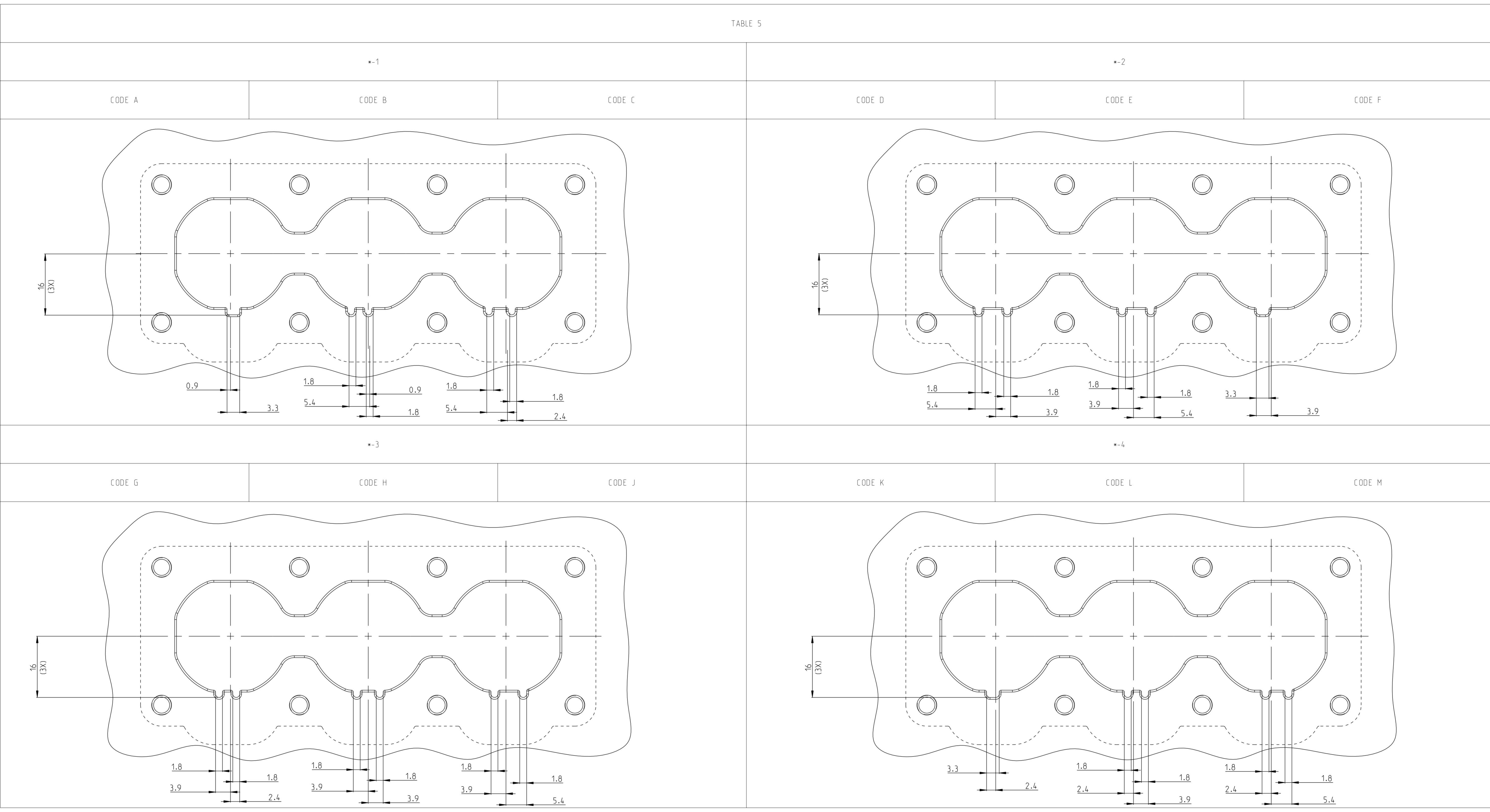
DATE	26AUG2021	BY	SHI
CHK	LL	26AUG2021	
APPROV	LL	26AUG2021	

DIMENSIONS: UNLESS OTHERWISE SPECIFIED  
 UNIT: INCHES  
 1 P.C. ±0.5  
 2 P.C. ±0.1  
 3 P.C. ±0.001  
 4 P.C. ±0.001  
 5 P.C. ±0.001  
 6 P.C. ±0.001  
 7 P.C. ±0.001  
 8 P.C. ±0.001  
 9 P.C. ±0.001  
 10 P.C. ±0.001  
 11 P.C. ±0.001  
 12 P.C. ±0.001  
 13 P.C. ±0.001  
 14 P.C. ±0.001  
 15 P.C. ±0.001  
 16 P.C. ±0.001  
 17 P.C. ±0.001  
 18 P.C. ±0.001  
 19 P.C. ±0.001  
 20 P.C. ±0.001  
 21 P.C. ±0.001  
 22 P.C. ±0.001  
 23 P.C. ±0.001  
 24 P.C. ±0.001  
 25 P.C. ±0.001  
 26 P.C. ±0.001  
 27 P.C. ±0.001  
 28 P.C. ±0.001  
 29 P.C. ±0.001  
 30 P.C. ±0.001  
 31 P.C. ±0.001  
 32 P.C. ±0.001  
 33 P.C. ±0.001  
 34 P.C. ±0.001  
 35 P.C. ±0.001  
 36 P.C. ±0.001  
 37 P.C. ±0.001  
 38 P.C. ±0.001  
 39 P.C. ±0.001  
 40 P.C. ±0.001  
 41 P.C. ±0.001  
 42 P.C. ±0.001  
 43 P.C. ±0.001  
 44 P.C. ±0.001  
 45 P.C. ±0.001  
 46 P.C. ±0.001  
 47 P.C. ±0.001  
 48 P.C. ±0.001  
 49 P.C. ±0.001  
 50 P.C. ±0.001  
 51 P.C. ±0.001  
 52 P.C. ±0.001  
 53 P.C. ±0.001  
 54 P.C. ±0.001  
 55 P.C. ±0.001  
 56 P.C. ±0.001  
 57 P.C. ±0.001  
 58 P.C. ±0.001  
 59 P.C. ±0.001  
 60 P.C. ±0.001  
 61 P.C. ±0.001  
 62 P.C. ±0.001  
 63 P.C. ±0.001  
 64 P.C. ±0.001  
 65 P.C. ±0.001  
 66 P.C. ±0.001  
 67 P.C. ±0.001  
 68 P.C. ±0.001  
 69 P.C. ±0.001  
 70 P.C. ±0.001  
 71 P.C. ±0.001  
 72 P.C. ±0.001  
 73 P.C. ±0.001  
 74 P.C. ±0.001  
 75 P.C. ±0.001  
 76 P.C. ±0.001  
 77 P.C. ±0.001  
 78 P.C. ±0.001  
 79 P.C. ±0.001  
 80 P.C. ±0.001  
 81 P.C. ±0.001  
 82 P.C. ±0.001  
 83 P.C. ±0.001  
 84 P.C. ±0.001  
 85 P.C. ±0.001  
 86 P.C. ±0.001  
 87 P.C. ±0.001  
 88 P.C. ±0.001  
 89 P.C. ±0.001  
 90 P.C. ±0.001  
 91 P.C. ±0.001  
 92 P.C. ±0.001  
 93 P.C. ±0.001  
 94 P.C. ±0.001  
 95 P.C. ±0.001  
 96 P.C. ±0.001  
 97 P.C. ±0.001  
 98 P.C. ±0.001  
 99 P.C. ±0.001  
 100 P.C. ±0.001

MATERIAL: SEE TABLE  
 FINISH: SPEC 2  
 WEIGHT: SEE TABLE  
 CUSTOMER DRAWING

NAME: 3POS.PIN DIA 10.0 HDR ASSY.90DEG HVP-HD1000  
 JOB-160341  
 APPLICATION SPEC: 314-160181  
 SIZE: A0  
 CASE CODE: 00779  
 DRAWING NO: 2394072  
 SCALE: 2:1  
 SHEET: 3 of 4  
 PART: A3

REVISIONS			
REV	DATE	DESCRIPTION	BY
1		SEE SHEET 1	



printed on 08/26/2022 20:16:43 (Printed Time from 16:59:55)

THIS DRAWING IS A CONTROLLED DOCUMENT.

DIMENSIONS: DIMS: 0.001 DECIMALS UNITS: 0.001 OPERATING SPEC: 0.001 FINISH SPEC: 0.001 MATERIAL: SEE TABLE FINISH SPEC: 2	DATE: 26AUG2021 CHK: L.L. APPV: J.Y.I.N. PRODUCT SPEC: 108-16034-1 APPLICATION SPEC: 114-160181 WEIGHT: SEE TABLE CUSTOMER DRAWING	NAME: 3POS.PIN DIA 10.0 HDR ASSY.90DEG HVP-HD1000 SIZE: A0 CASE CODE: 00779 DRAWING NO: 2394072 SCALE: 2:1 SHEET: 4 OF: 4 REV: A3	 TE Connectivity
---	--	--	---------------------