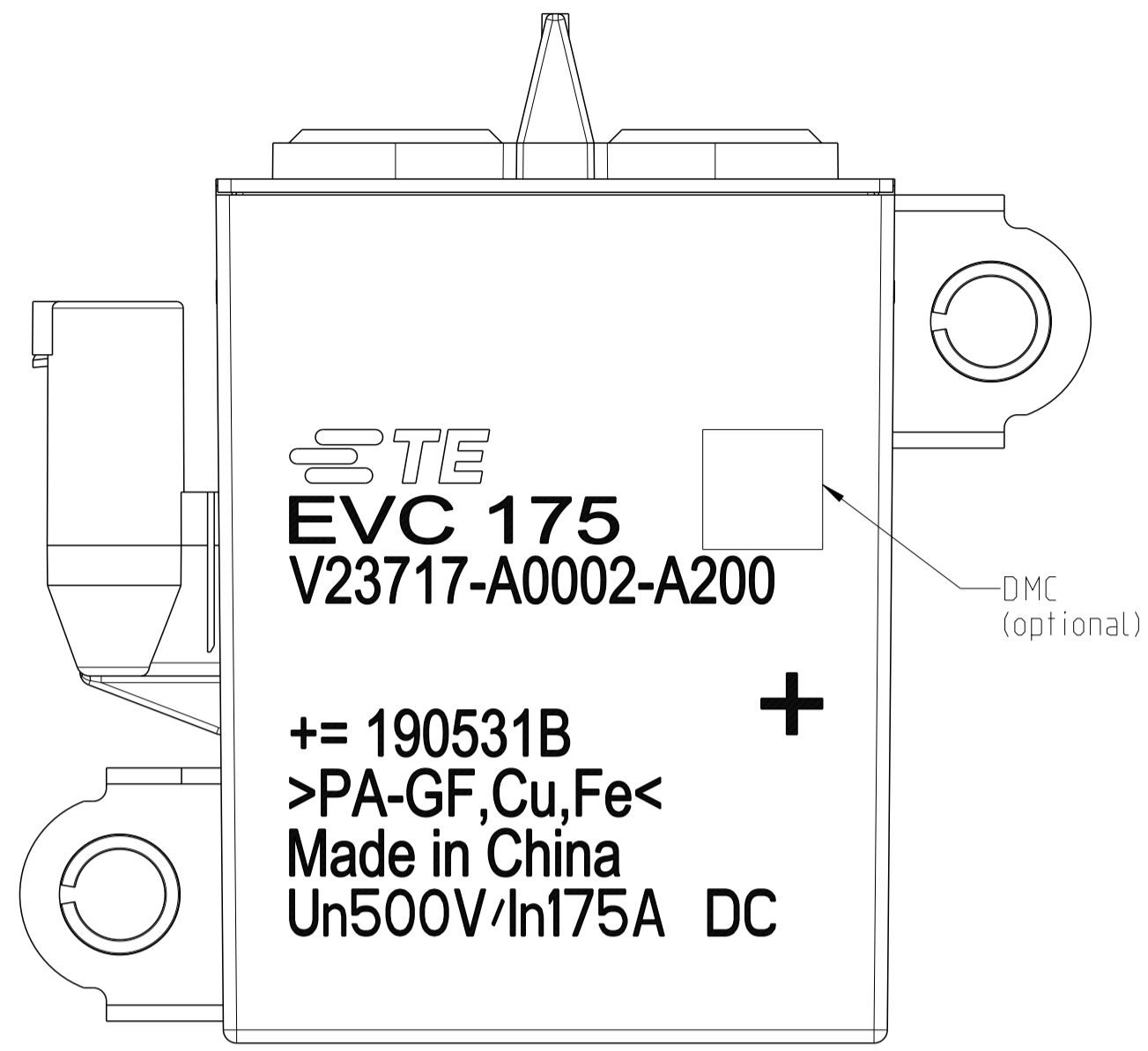
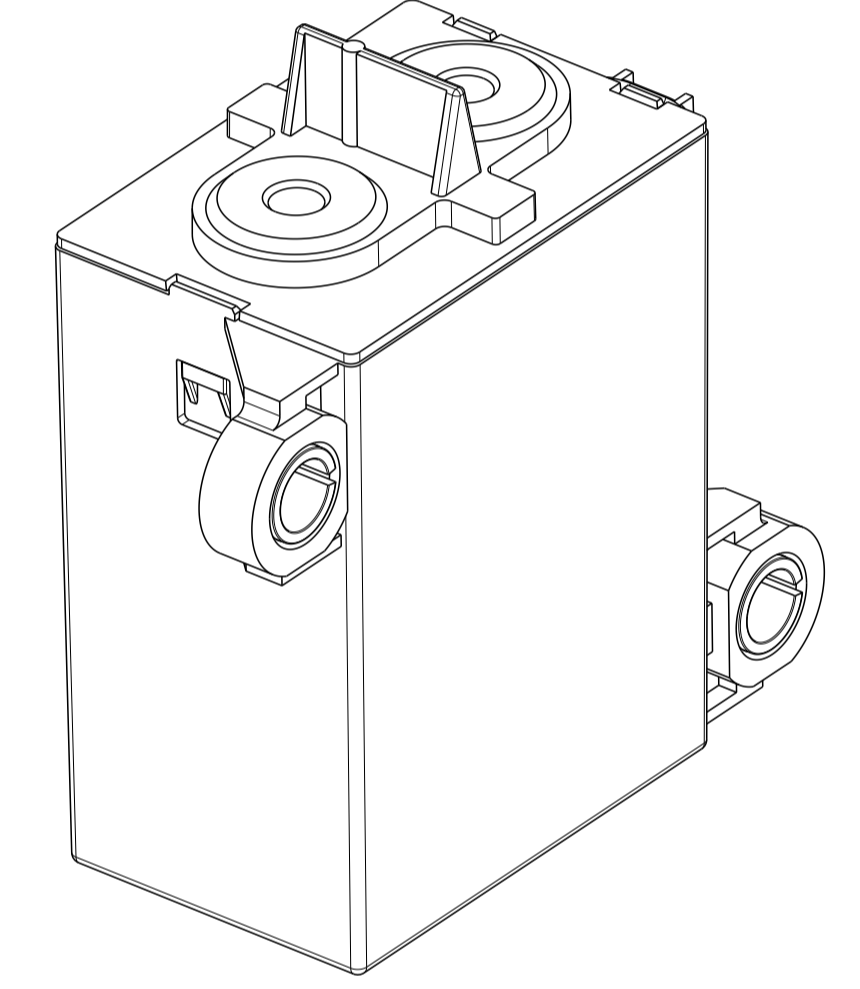
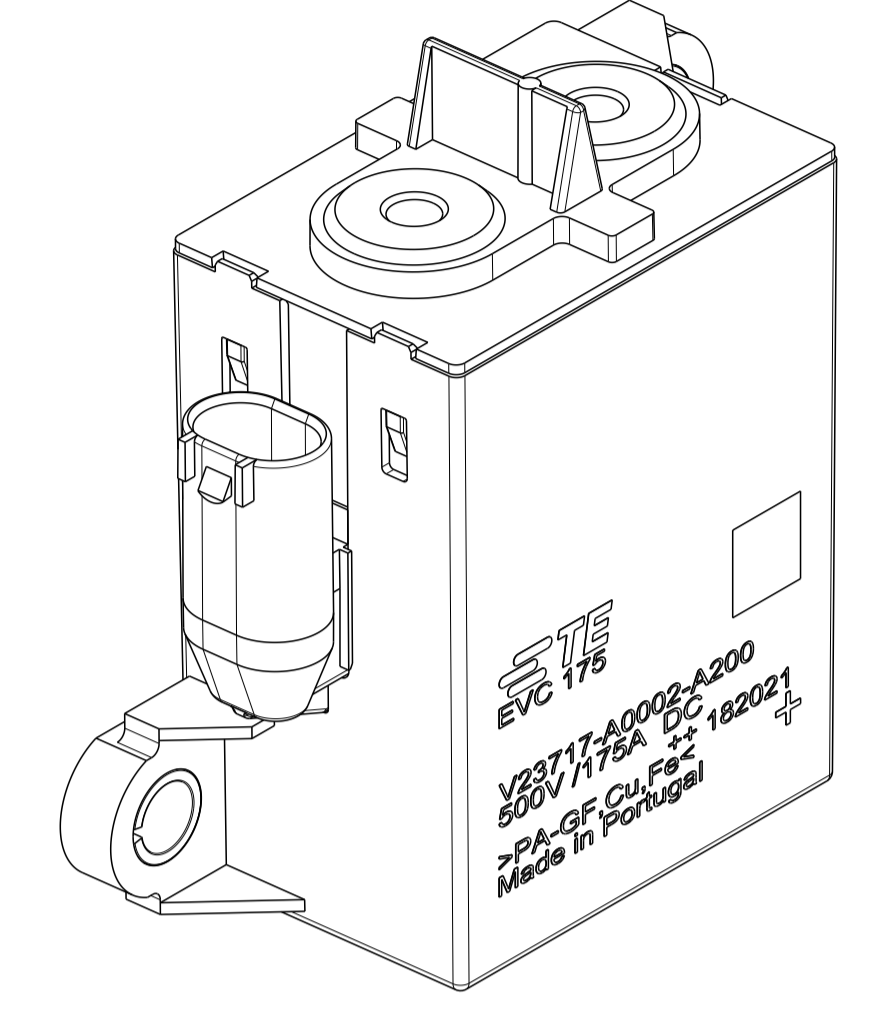
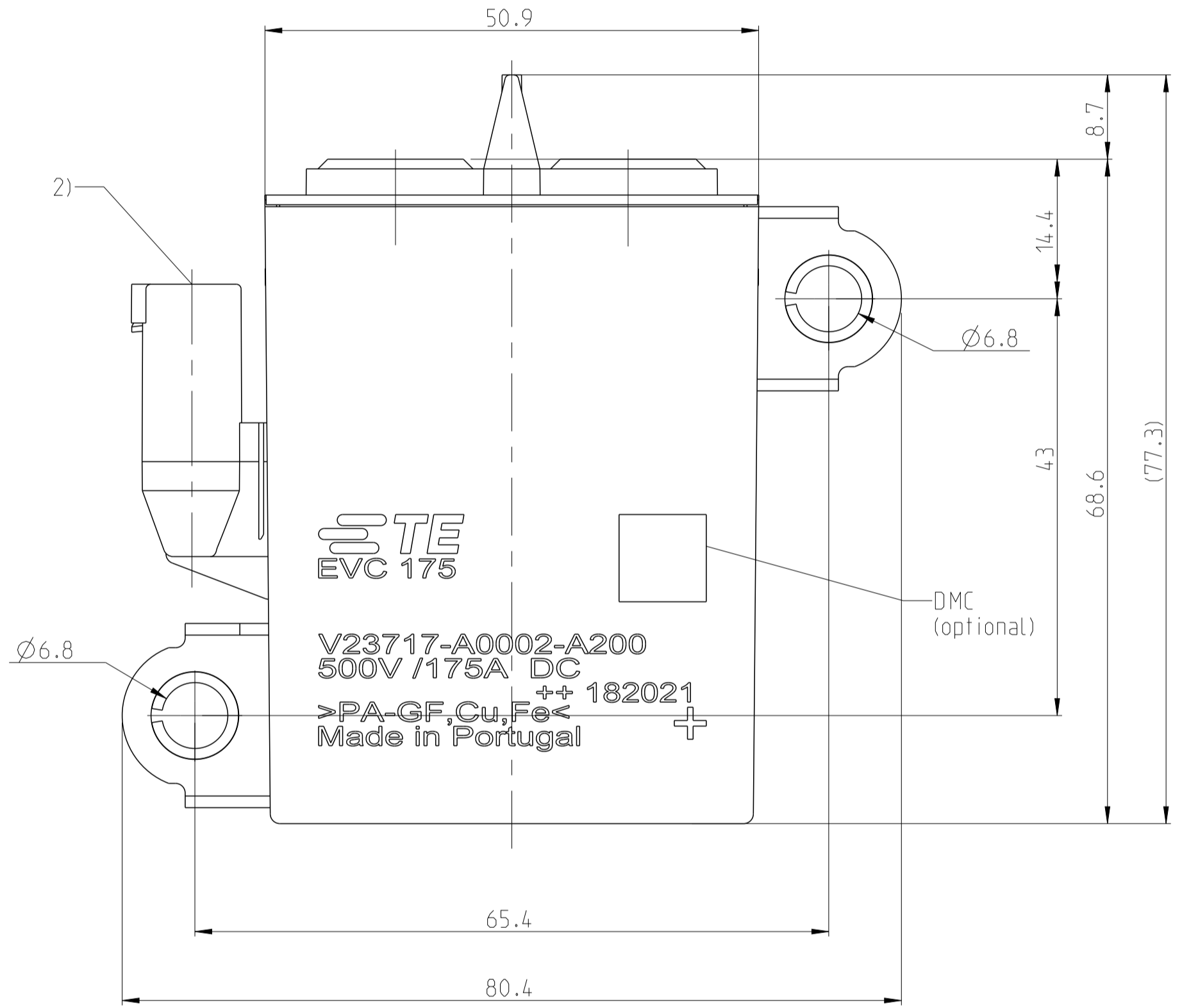
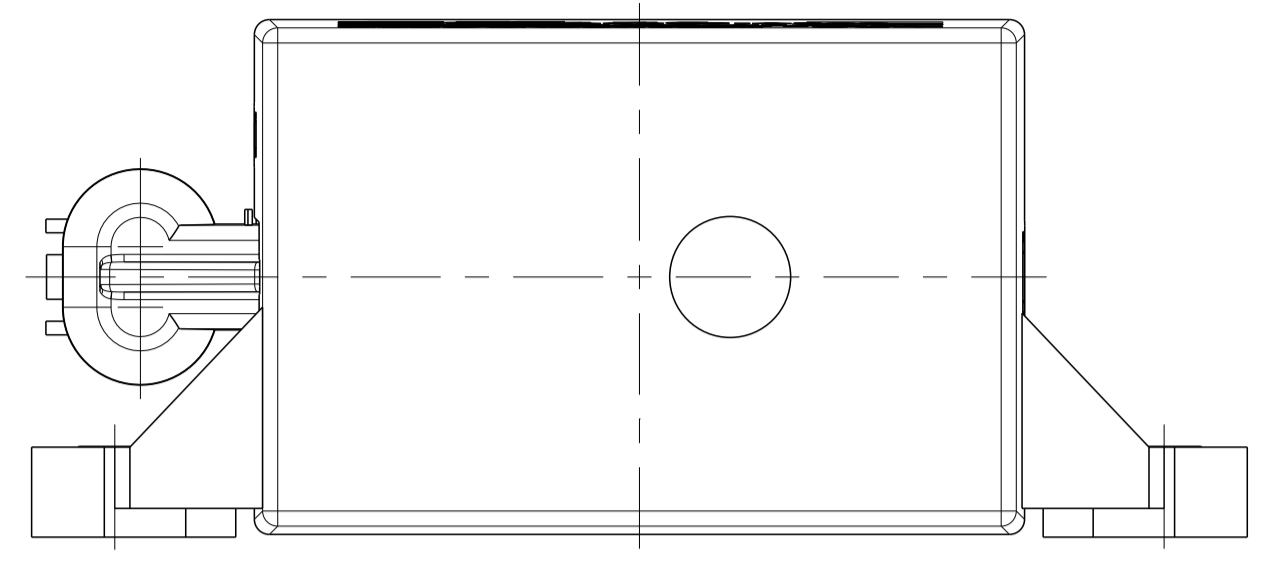
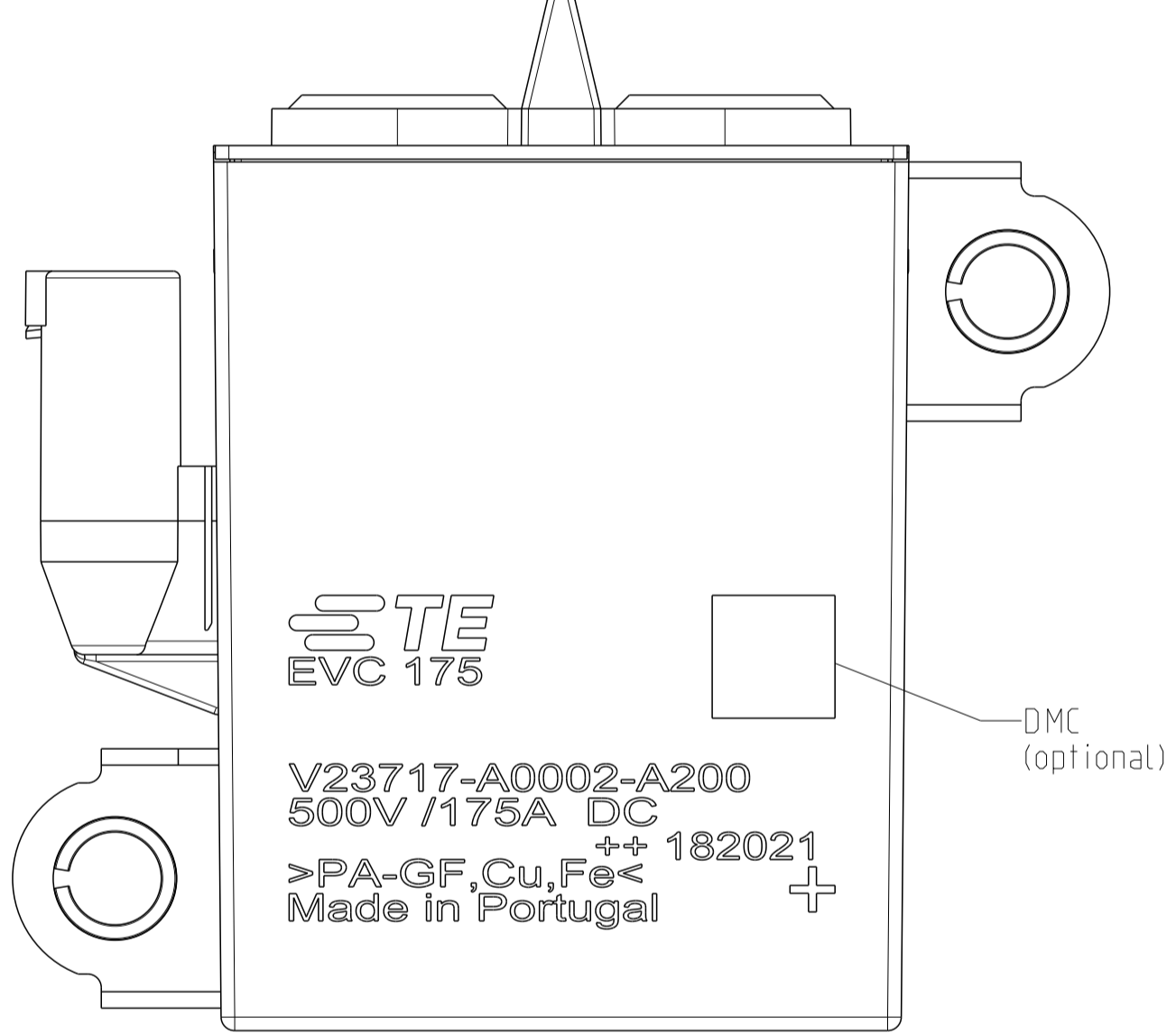


REVISIONS					
P	LTN	DESCRIPTION	DATE	DMN	APVD
7		Mounting flange changed to 6mm; MQS Notice 2)	10APR2015	RW	AK
A1		view rotated	28APR2016	JGAB	THAE
A2		TCPN-Table	06JUL2016	JGAB	THAE
B		ECO-19-015478	31JUL2019	JGAB	THAE

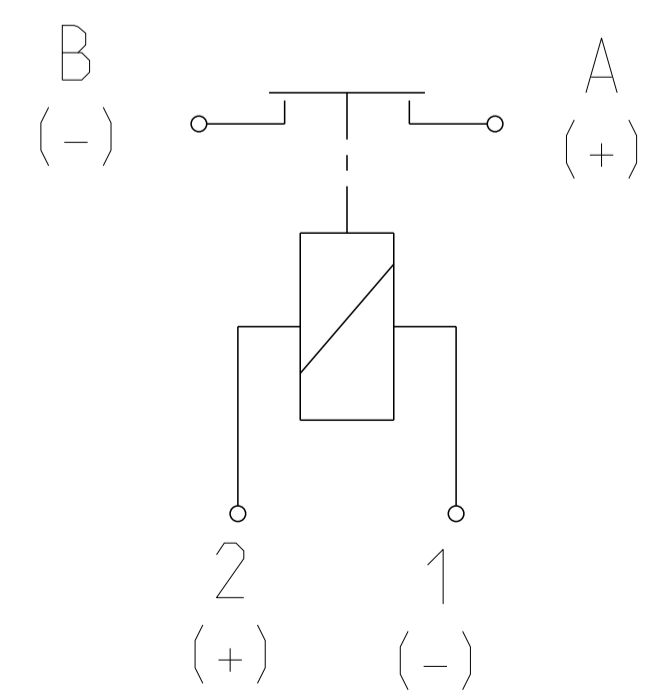
Marking for Standard EVC 175
China Production



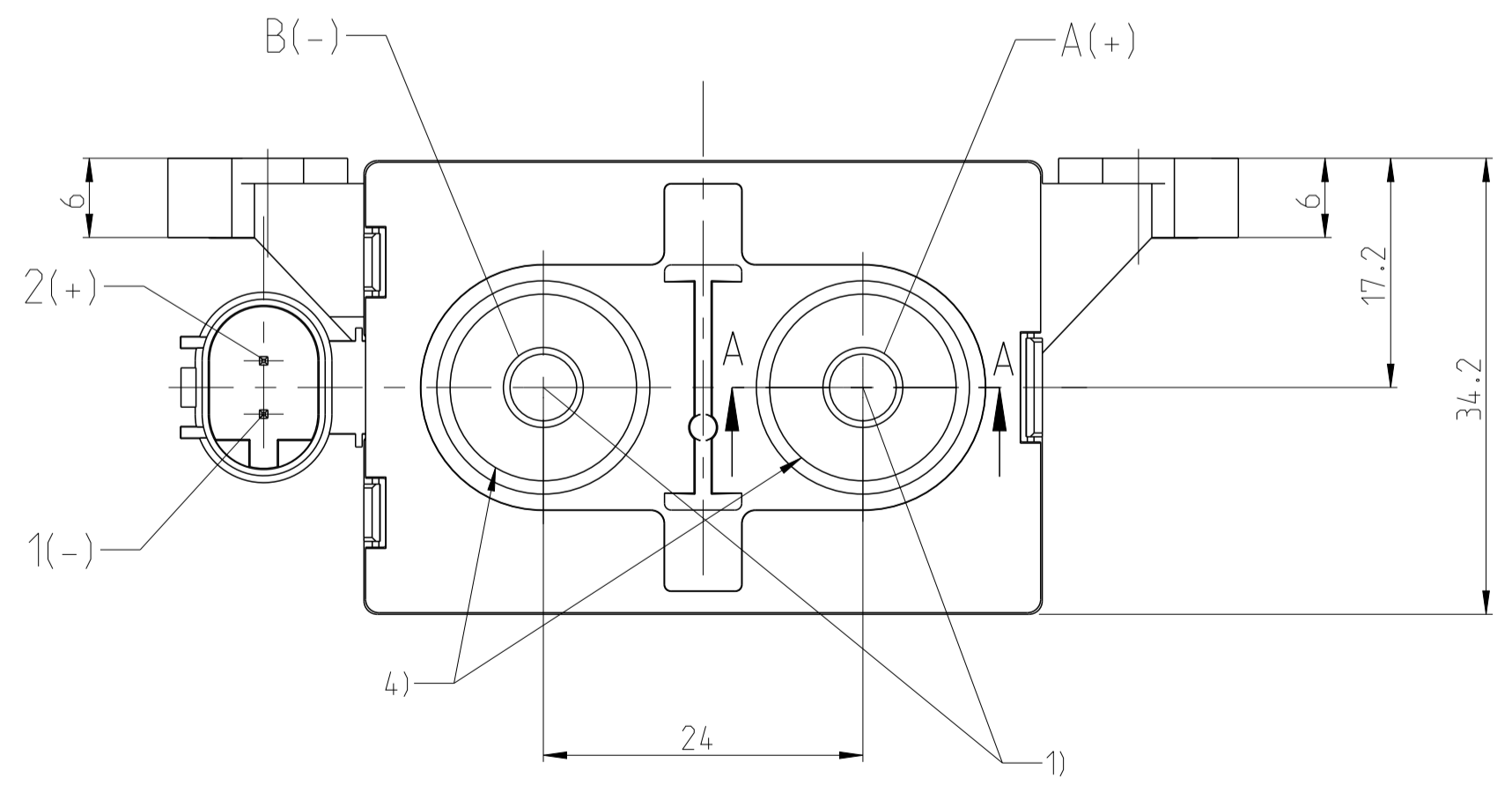
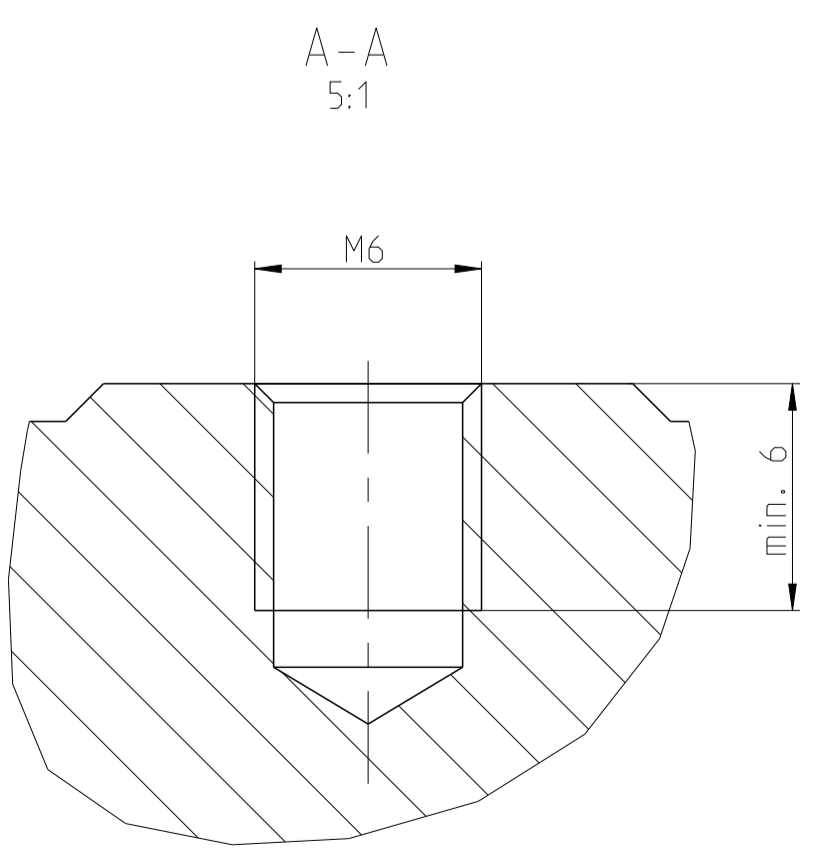
Marking for Standard EVC 175
Protugal Production



Forward load current direction



Applies for Terminal A and B



- Notice:
- 1) Permitted Torque max. 5 Nm
 - 2) Socket Housing TE Interface 2 Pos. MQS Code A, appropriate for Socket Housing 2 Pos. MQS, TE part no. 1-967644-1
 - 3) Tolerances ISO8015 / ISO2768-cL
 - 4) Sn Plating

China Production	2312311-1	B	V23717-A0002-A200
Portugal Production	2-1904070-1	B	V23717-A0002-A200
Remarks	TCPN	REV	PART ALIAS

THIS DRAWING IS A CONTROLLED DOCUMENT.		DMN	16AUG2013	TE Connectivity		
DIMENSIONS:		CHK	Lido Gabel			
mm		CHK	Th. Hänel			
TOLERANCES UNLESS OTHERWISE SPECIFIED:		APVD	A. Kottler			
0 PLC ± 3) 2 PLC ± 3 PLC ± 4 PLC ± ANGLES ± FINISH ±	PRODUCT SPEC APPLICATION SPEC WEIGHT 295g Customer Drawing	NAME EVC 175 Internal Economizer	SIZE A1	CAGE CODE -	DRAWING NO. C=V23717-A0002-A200	RESTRICTED TO -
SCALE 2:1		SHEET 1 OF 1		REV B		