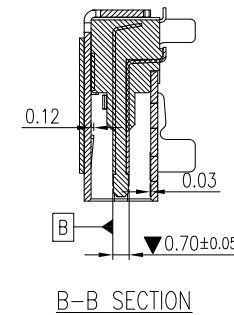
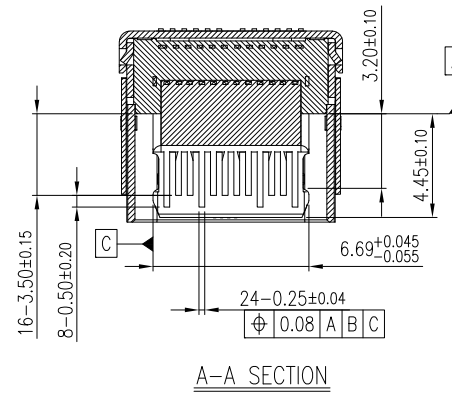
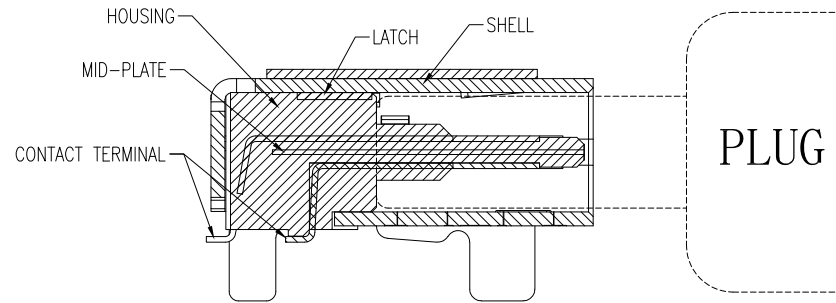
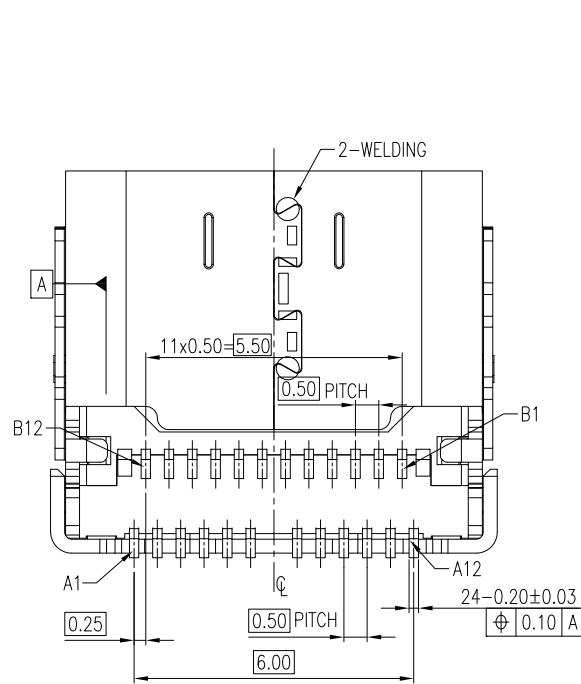


This document is the property of Amphenol Corporation and is delivered on the express condition that is not to be disclosed, reproduced or used, in whole or in part, for manufacture or sale by anyone other than Amphenol Corporation without its prior consent, and that no right is granted to disclose or to use any information in this document.
 The marking on this product doesn't contain environmental hazardous materials per directive 2011/65/EU & 2015/863/EU for RoHS compliant and per IEC 61249-2-21 for Halogen-Free compliant.

FOR REFERENCE ONLY



SYM		ECN No.	REVISIONS	DATE	BY
AX1	EDSR#11035		NON-RELEASE REVISION	2021-05-11	Debby Hung
AX2	EDSR#11824		UPDATE DRAWING	2021-07-20	Debby Hung



TOLERANCE		APPROVALS		DATE	TITLE		PART No.				
X.		DRAWN	Debby Hung	2021-07-20	USB 3.1 TYPE C RECEPTACLE		Amphenol®				
X.X	±0.30	CHECKED	Sandy Wu	2021-07-20	R/A DUAL ROW SMT TYPE		Amphenol Corporation				
X.XX	±0.20	APPROVED	Roger Tsai	2021-07-20	CH=1.93mm		Amphenol Taiwan Corporation				
X.XXX	±0.10	DWG TYPE	CUST DWG	PROJECT CODE	OTHER	UNIT	mm	SIZE	A3	PART No.	GSB3C31X31DYHR
ANGULAR	±1°					SCALE	NA	SHEET	2 OF 4	DWG No.	GSB3C31X31DYHR
UNLESS OTHERWISE SPECIFIED										REV.	AX2

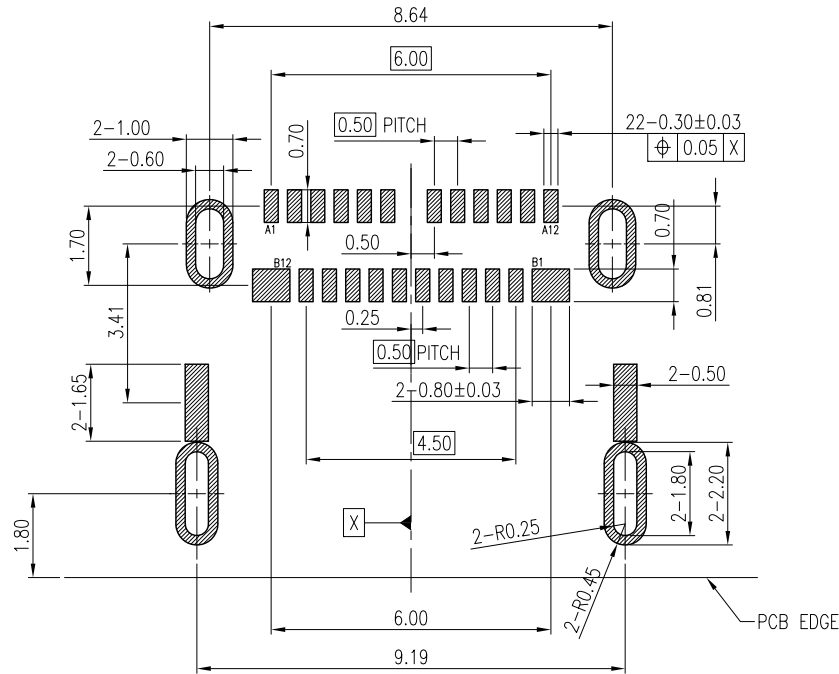
This document is the property of Amphenol Corporation and is delivered on the express condition that is not to be disclosed, reproduced or used, in whole or in part, for manufacture or sale by anyone other than Amphenol Corporation without its prior consent, and that no right is granted to disclose or to use any information in this document.

The marking on this product doesn't contain environmental hazardous materials per directive 2011/65/EU & 2015/863/EU for RoHS compliant and per IEC 61249-2-21 for Halogen-Free compliant.

FOR REFERENCE ONLY



SYM		ECN No.	REVISIONS	DESCRIPTION	DATE	BY
AX1	EDSR#11035		NON-RELEASE REVISION		2021-05-11	Debby Hung
AX2	EDSR#11824		UPDATE DRAWING		2021-07-20	Debby Hung



PIN ASSIGNMENT											
A1	A2	A3	A4	A5	A6	A7	A8	A9	A10	A11	A12
GND	TX1+	TX1-	VBUS	CC1	D+	D-	RFU1	VBUS	RX2-	RX2+	GND
GND	RX1+	RX1-	VBUS	SBU2	D-	D+	CC2	VBUS	TX2-	TX2+	GND
B12	B11	B10	B9	B8	B7	B6	B5	B4	B3	B2	B1

RECOMMENDED PCB LAYOUT (TOP VIEW) BOARD PAD
 TOLERANCE: ±0.05mm
 (PCB THICKNESS 0.80±0.05mm)
 SCALE 2:1

TOLERANCE	APPROVALS	DATE	TITLE				
X. ±0.30	DRAWN Debby Hung	2021-07-20	USB 3.1 TYPE C RECEPTACLE R/A DUAL ROW SMT TYPE CH=1.93mm	 Amphenol Corporation Amphenol Taiwan Corporation			
X.X ±0.20	CHECKED Sandy Wu	2021-07-20					
X.XXX ±0.10	APPROVED Roger Tsai	2021-07-20					
ANGULAR ±1°	DWG TYPE CUST DWG	PROJECT CODE OTHER					
UNLESS OTHERWISE SPECIFIED			UNIT mm SCALE NA	SIZE A3 SHEET 3 OF 4	PART No. GSB3C31X31DYHR DWG No. GSB3C31X31DYHR	REV. AX2	

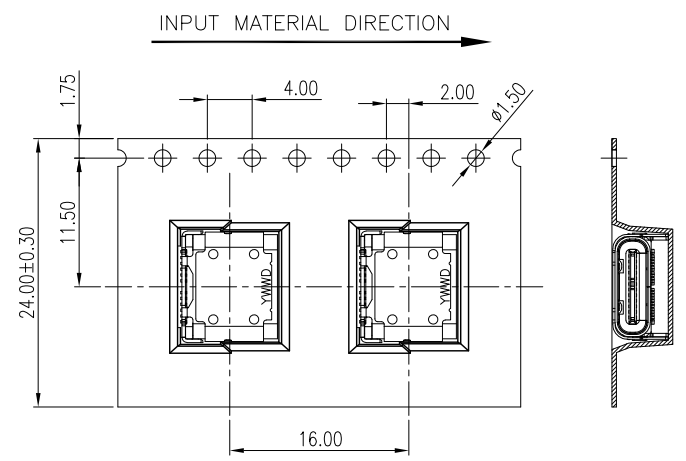
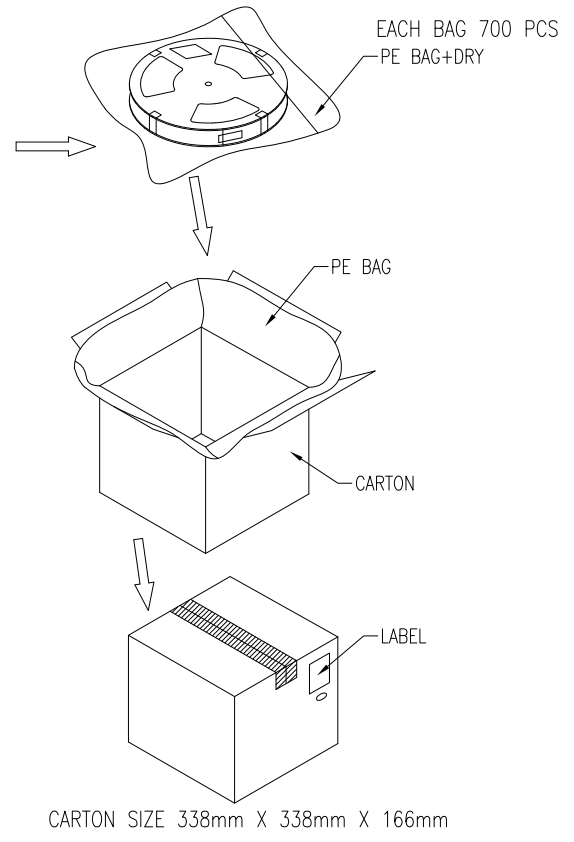
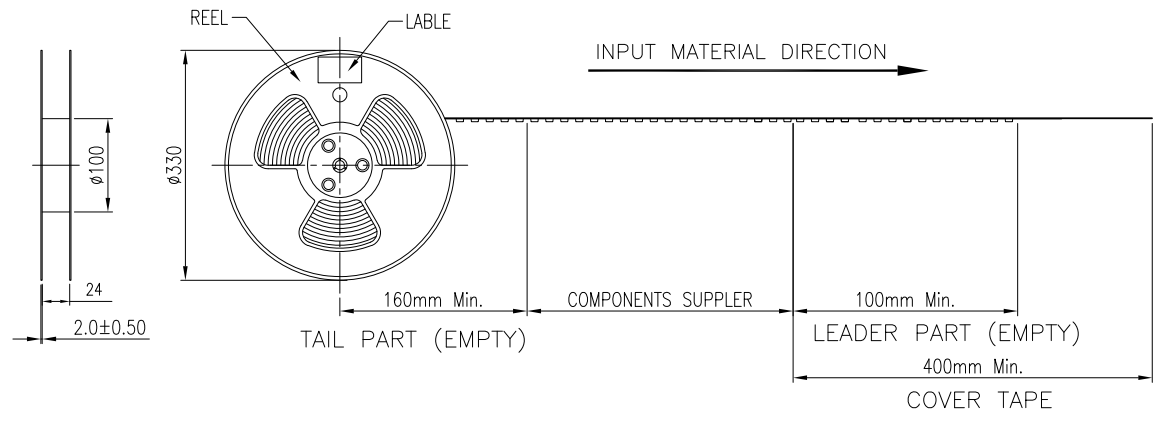
This document is the property of Amphenol Corporation and is delivered on the express condition that is not to be disclosed, reproduced or used, in whole or in part, for manufacture or sale by anyone other than Amphenol Corporation without its prior consent, and that no right is granted to disclose or to use any information in this document.

The marking on this product doesn't contain environmental hazardous materials per directive 2011/65/EU & 2015/863/EU for RoHS compliant and per IEC 61249-2-21 for Halogen-Free compliant.

FOR REFERENCE ONLY



REVISIONS				
SYM	ECN No.	DESCRIPTION	DATE	BY
AX1	EDSR#11035	NON-RELEASE REVISION	2021-05-11	Debby Hung
AX2	EDSR#11824	UPDATE DRAWING	2021-07-20	Debby Hung



PACKAGING BY T&R	5.5	4.5	700	5	3500	GSB3C31X31DYHR
	G/W KG	N/W KG	PCS/ REEL	REELS/ BOX	QUANTITY (PCS)	PART NUMBER

TOLERANCE	APPROVALS	DATE	TITLE		PART No.	
X. ±0.30	DRAWN Debby Hung	2021-07-20	USB 3.1 TYPE C RECEPTACLE		Amphenol®	
X.X ±0.20	CHECKED Sandy Wu	2021-07-20	R/A DUAL ROW SMT TYPE		Amphenol Corporation	
X.XXX ±0.10	APPROVED Roger Tsai	2021-07-20	CH=1.93mm		Amphenol Taiwan Corporation	
ANGULAR ±1°	DWG TYPE CUST DWG	PROJECT CODE OTHER	UNIT mm	SIZE A3	PART No. GSB3C31X31DYHR	
UNLESS OTHERWISE SPECIFIED			SCALE NA	SHEET 4 OF 4	DWG No. GSB3C31X31DYHR REV. AX2	