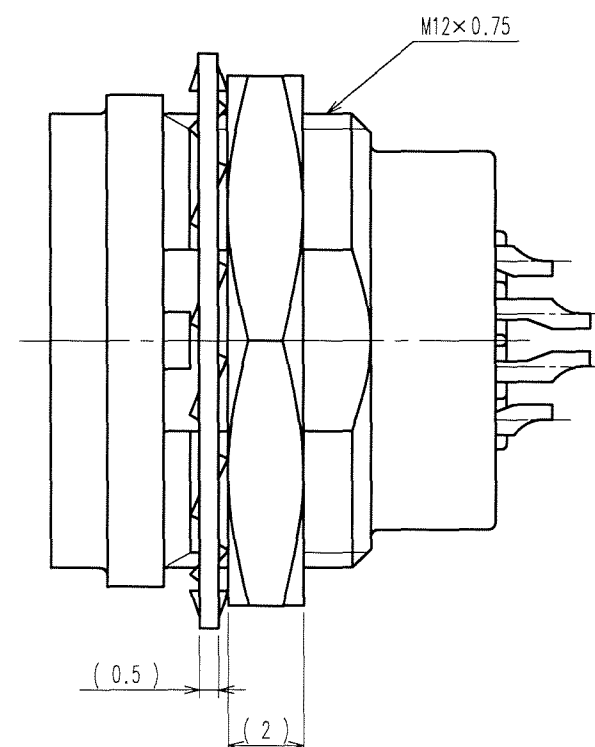
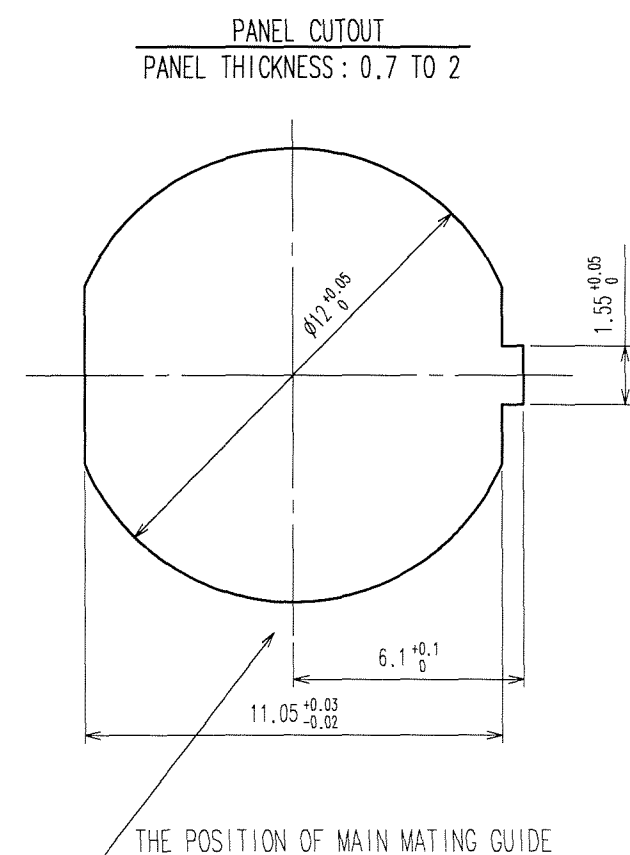
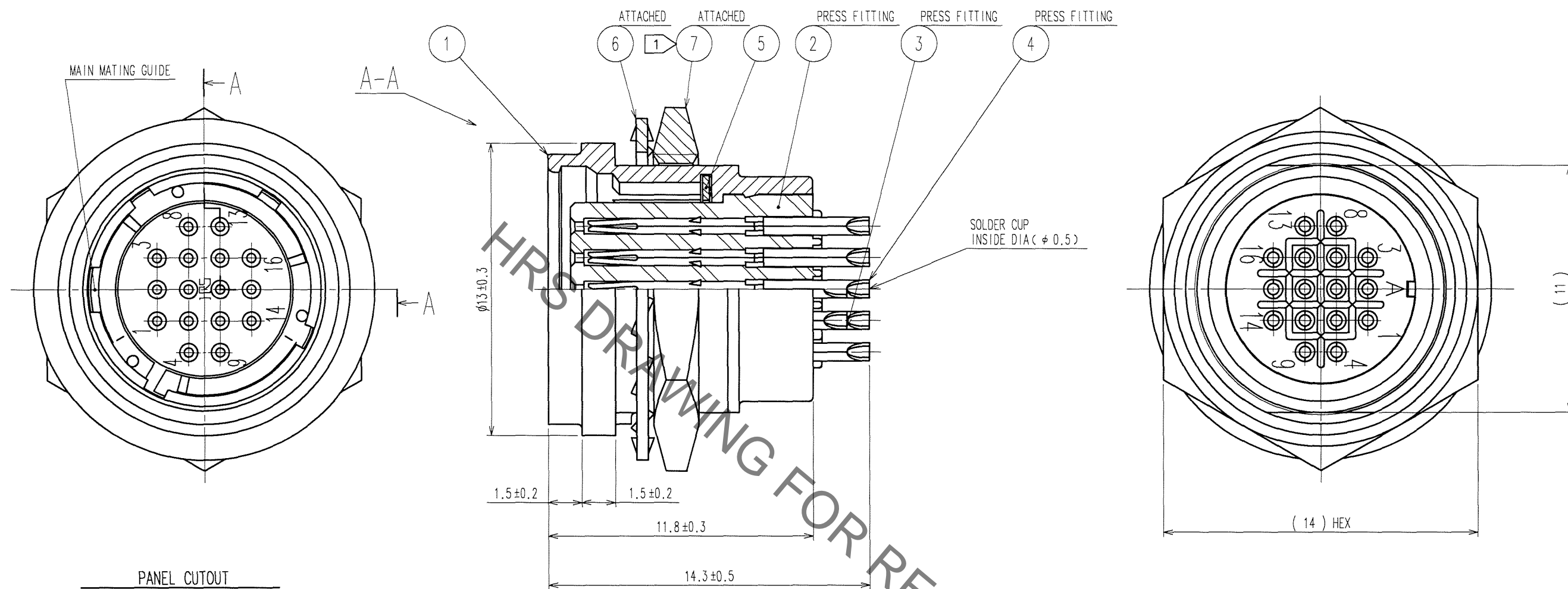






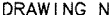
	COUNT	DESCRIPTION OF REVISIONS	BY	CHKD	DATE		COUNT	DESCRIPTION OF REVISIONS	BY	CHKD	DATE
▲	1	DIS-C-000585	T.K	E.K	07.07.27	▲					. .
▲					. .	▲					. .
▲					. .	▲					. .



- NOTES
- 1 THE RECOMMENDED TIGHTENING TORQUE OF REF. No. ⑦ TO BE 1.5 N·m.
COATING WITH LOCTITE 242 MANUFACTURED BY HENKEL JAPAN OR EQUIVALENT IS RECOMMENDED
TO PREVENT LOOSENESS.
- 2 CONTACT AREA : GOLD 0.2μm min.
TERMINAL AREA : GOLD FLASH.
UNDER PLATING : NICKEL 2μm min.

4	PHOSPHOR BRONZE				
3	PHOSPHOR BRONZE		7	BRASS 	NICKEL PLATING
2	POLYPHENYLENE SULFIDE	(BLACK) 94V-0	6	STEEL	ZINC CHROMATIZED (TRIVALENT CHROMIUM)
1	ZINC ALLOY	MATTE FINISH NICKEL PLATING	5	BERYLLIUM COPPER	NICKEL PLATING
NO.	MATERIAL	FINISH, REMARKS	NO.	MATERIAL	FINISH, REMARKS

CODE NO. (OLD) CL	DRAWN M. SATO '06 09 20	DESIGNED Y. YAMADA '06 09 21	CHECKED E. EZAWA '06 09 21	APPROVED M. SATO '06 09 21	RELEASED .
----------------------	-------------------------------	------------------------------------	----------------------------------	----------------------------------	---------------

 SCALE 5 : 1 UNITS mm	DRAWING NO. EDC3-115057	PART NO. HR25A-9R-16S
	 HIROSE ELECTRIC CO., LTD	CODE NO. CL125-0615-0-00