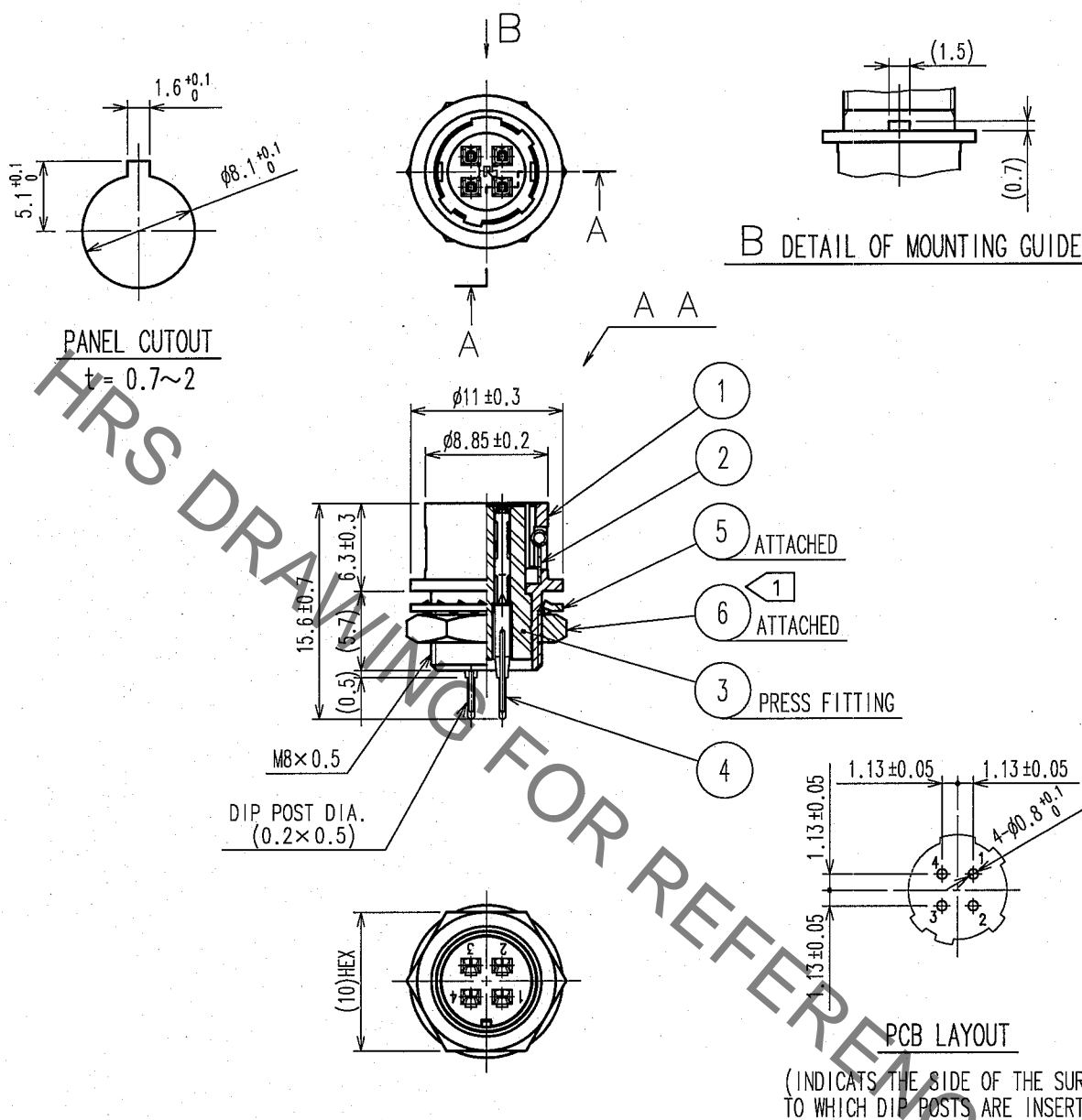
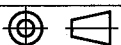



	COUNT	DESCRIPTION OF REVISIONS	BY	CHKD	DATE		COUNT	DESCRIPTION OF REVISIONS	BY	CHKD	DATE
△					. .	△					. .
△						△					. .
△						△					. .



NOTE 1 THE RECOMMENDED CLAMP TORQUE OF REF. NO. ⑥ TO BE 1.5 N·m.  
LOCTITE 242, HENKEL JAPAN OR EQUIVALENT IS RECOMMENDED TO  
PREVENT REF. NO. ⑥ FROM LOOSENING.

3	PBT	(BLACK) UL94V-0	6	BRASS	NICKEL PLATING	
2	STAINLESS STEEL		5	PHOSPHOR BRONZE	NICKEL PLATING	
1	ZINC ALLOY	MATTE FINISH NICKEL PLATED	4	PHOSPHOR BRONZE	SILVER PLATING 2μ m min.	
NO.	MATERIAL	FINISH, REMARKS	NO.	MATERIAL	FINISH, REMARKS	
CODE NO. (OLD) CL		DRAWN J. Komatsu 05.11.17	DESIGNED D. Matsume 05.11.18	CHECKED E. Kuni 05.11.22	APPROVED M. Sato 05.11.25	RELEASED
 SCALE 2 : 1		DRAWING NO. EDC4-022527-73		PART NO. HR10A-7R-4SB(73)		<div>1/1</div>
UNITS mm		 HIROSE ELECTRIC CO.,LTD.		CODE NO. CL110-0314-4-73		