

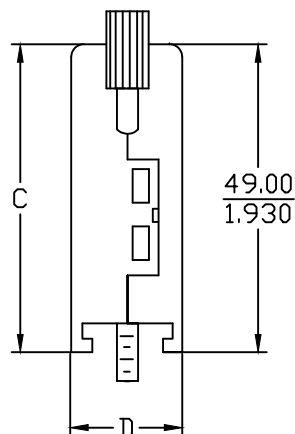
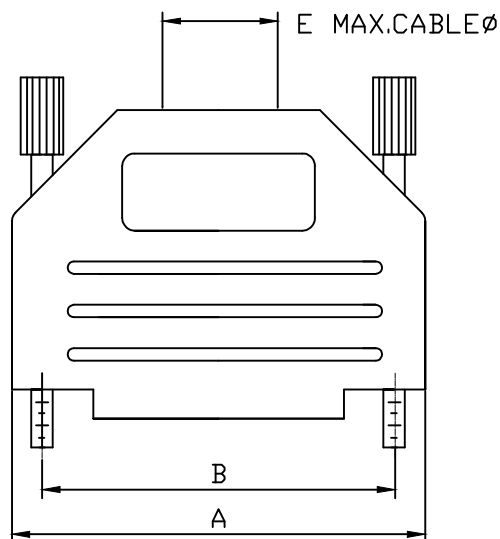
THIS IS A C.A.D. GENERATED DRAWING
DO NOT MAKE MANUAL REVISIONS TO MASTER.



* UNLESS OTHERWISE SPECIFIED TOLERANCES
ON DECIMAL IS:

BACKSHELL KIT INCLUDES:

- (1)BACKSHELL
- (2)4-40 THUMBSCREWS
- (1)PLASTIC STRAIN RELIEF
- (1)METAL STRAIN RELIEF CLAMP
- (2)STRAIN RELIEF SCREWS
- TORQUE VALUE ON PLASTIC FOR STRAIN RELIEF SCREWS=4 INCH POUNDS MAX
- (1)DB CONNECTOR-MALE SOLDER CUP



DIMENSIONS(mm/in)					
SIZE	A ± 0.32	B ± 0.10	C ± 0.02	D ± 0.02	E
9	31.50	24.99	34.00	15.00	8.00
	1.240	0.984	1.339	0.591	0.315
15	40.00	33.32	34.00	15.00	11.50
	1.575	1.312	1.339	0.591	0.453
25	53.50	47.04	40.00	15.00	11.50
	2.106	1.852	1.575	0.591	0.453
37	71.00	63.50	40.00	15.00	11.50
	2.795	2.500	1.575	0.591	0.453
50	67.50	61.11	40.00	19.00	14.00
	2.657	2.406	1.575	0.748	0.551

(SEE PAGE 2)

KIT PART NUMBER:	KIT PART NUMBER:	CONNECTOR PART NUMBER:
MHDPPK9DB9SP	MHDPPK9-YY-K	MHDB9SP
MHDPPK15DB15SP	MHDPPK15-YY-K	MHDB15SP
MHDPPK25DB25SP	MHDPPK25-YY-K	MHDB25SP

COLOR CODE CHART:

BLACK = BK
LIGHT GREY = LG
DEC GREY = DE
RED = R
BLUE = B
YELLOW = Y
GREEN = G
WHITE = W

MATERIAL: POLYAMIDE PA66-UL RECOGNIZED MATERIAL
SEE COLOR CODE CHART.
THUMBSCREWS: STEEL,BLACK OXIDE(FOR BLACK HOODS)
STEEL,Zn PLATED(FOR COLORED HOODS)

OPERATING TEMP: -55°C TO+110°C .



THIS SERIES FULLY CONFORMS TO THE
EUROPEAN UNION DIRECTIVES 2002/95/EC
AND 2002/96/EC FOR RoHS COMPLIANCY.

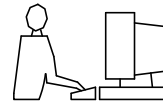


MH CONNECTORS LTD.

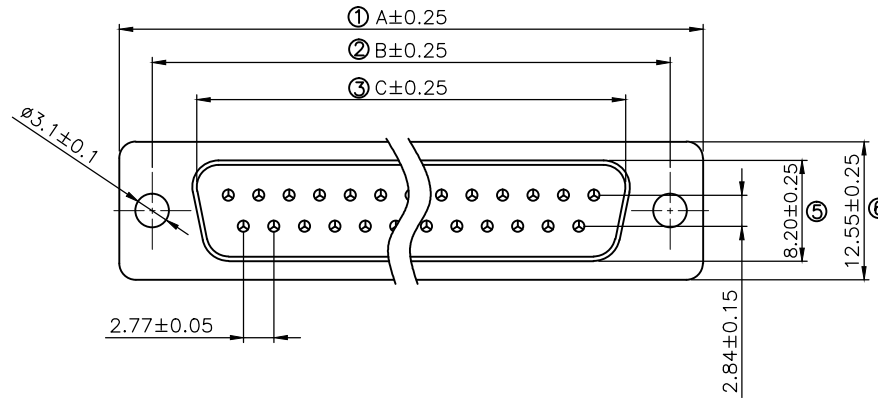
THESE DRAWINGS AND SPECIFICATIONS ARE THE
PROPERTY OF MH CONNECTORS LTD. AND SHALL NOT
BE REPRODUCED, COPIED OR USED AS THE BASIS FOR
THE MANUFACTURE OR SALE OF APPARATUS WITHOUT
WRITTEN PERMISSION.

DRAWN HALEY		DATE 06-27-14	
APPROVED		DATE	
SCALE	SHEET OF 1 OF 2	REV: B	
DRAWING No MHDPPKXX-MHDBXXSP			

THIS IS A C.A.D. GENERATED DRAWING
DO NOT MAKE MANUAL REVISIONS TO MASTER.



* UNLESS OTHERWISE SPECIFIED TOLERANCES
ON DECIMAL IS: ANGLE $\pm 1^\circ$
.X ± 0.15
.XX ± 0.05



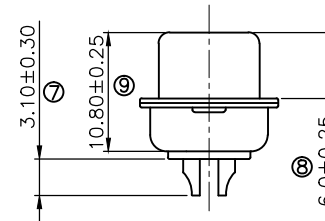
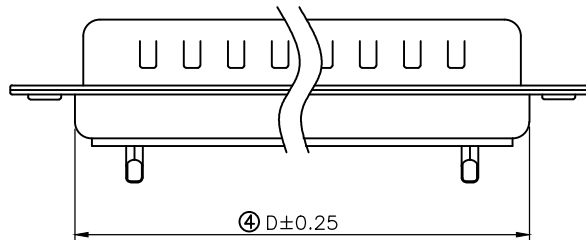
Remark:

1. SPECIFICATION:

- 1.1 Rated voltage:250V
- 1.2 Rates current:5AMP
- 1.3 Contact resistance:20MΩ MAX
- 1.4 Insulation resistance:1000MΩ MIN.at 500V DC
- 1.5 Withstand voltage:500V Per mintute
- 1.6 Temperature range:-55 -105°C

2. MATERIAL:

- 2.1 Plastic:PBT+30% G.F (UL94V-0) BLACK
- 2.2 Terminal:brass ,tin-gold plated
- 2.3 Spcc shell:Spcc front shell is ni plated back shell is tin plated



PN	PIN	A	B	C	D
MHDB9SP	09	30.81	24.99	16.92	19.28
MHDB15SP	15	39.25	33.32	25.25	27.75
MHDB25SP	25	53.03	47.04	38.96	41.30
MHDB37SP	37	69.50	63.50	55.42	57.40

THESE DRAWINGS AND SPECIFICATIONS ARE THE
PROPERTY OF MH CONNECTORS LTD. AND SHALL NOT
BE REPRODUCED, COPIED OR USED AS THE BASIS FOR
THE MANUFACTURE OR SALE OF APPARATUS WITHOUT
WRITTEN PERMISSION.

DRAWN
JOHNNY

DATE
07-16-12

APPROVED
DAMIEN

DATE
01-15-14

SCALE
1:1

SHEET OF
2 OF 2

REV:
B

DRAWING No
MHDPPKXX-DBXXSP



THIS SERIES FULLY CONFORMS TO THE
EUROPEAN UNION DIRECTIVES 2002/95/EC
AND 2002/96/EC FOR RoHS COMPLIANCY.



MH CONNECTORS LTD.