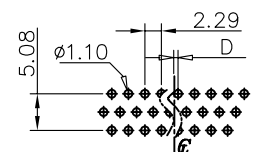
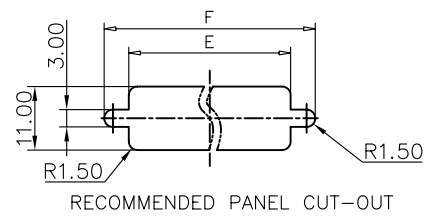
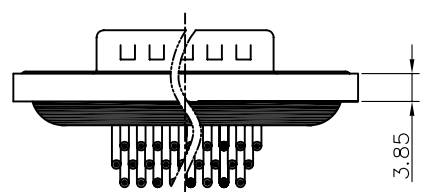
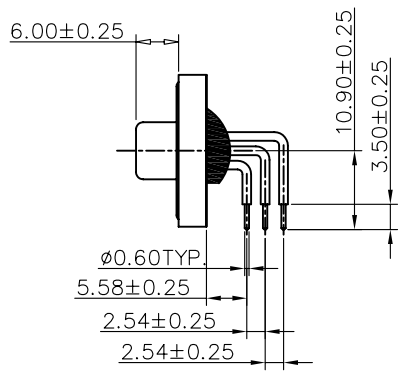
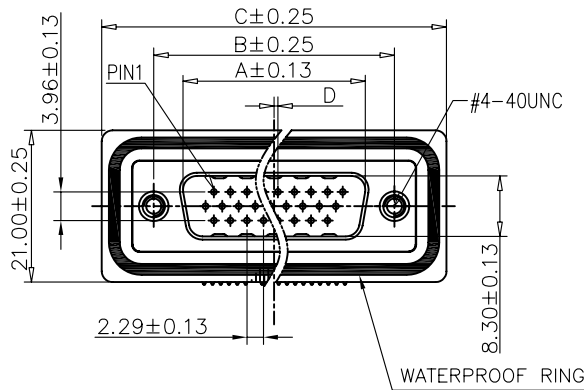
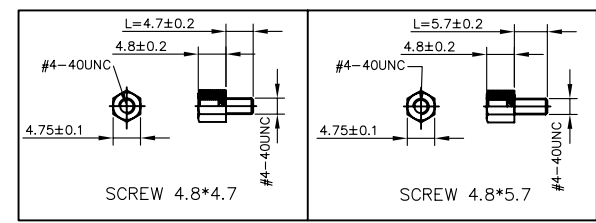


This document is the property of Amphenol Corporation and is delivered on the express condition that it is not to be disclosed, reproduced or used, in whole or in part, for manufacture or sale by anyone other than Amphenol Corporation without its prior consent, & that no right is granted to disclose or to use any information in this document.



RECOMMENDED P.C.B. LAYOUT  
GENERAL TOLERANCE: ±0.05mm



# Customer drawing

POSITION	A	B	C	D	E	F
15	16.92	24.99	39.40	0.25	20.00	28.20
26	25.30	33.32	47.70	0.51	28.00	36.50
44	38.96	47.04	64.50	0.51	41.50	51.00
62	55.42	63.50	80.78	0.51	57.80	67.30

REVISIONS				
SYM	ECN	DESCRIPTION	DATE	APPROVED
1		New release	06/22/10	IP

## D-SUB TECHNICAL DATA

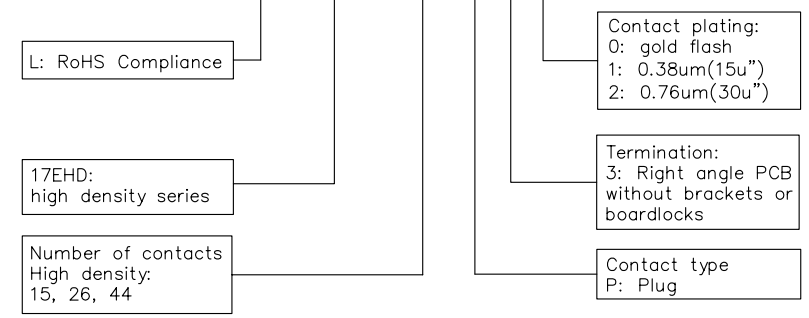
SHELL : Steel ,1.25um(50u") min nickel  
 BODY : Glass filled thermoplastic.  
 Flame retardant to UL94 V-0 Color ,Black  
 CONTACTS : Brass,Gold over 50u" min nickel.(According to the P/N)  
 SCREWLOCK : Steel, 50u" min nickel  
 REAR INSERT : Brass, 50u" min nickel  
 O RING : Silicone, Color: Blue  
 EPOXY: Color: Black  
 ELECTRICAL : Voltage rating : 300 V RMS at 50 Hz  
 Current rating : 5A  
 Insulation resistance >5000 M Ohms  
 Contact resistance 20mOhms max.  
 MARKING : Amphenol logo  
 Manufacturing date(YYYW)



NOTE : Screw L=4.7 For Panel Thickness Under X=1.2mm  
 Screw L=5.7 For Panel Thickness Between X=1.2~2.0mm

## PRODUCT CODE

L 17EHD XX P 3 X



UNLESS OTHERWISE SPECIFIED TOLERANCES		APPROVAL	DATE
U.S.	METRIC	DRAWN	Lasmon He
.X +/-	0.50	CHECKED	Lik Wang
.XX +/-	0.30	CHECKED	
.XXX +/-	0.20		
FRACTIONS +/-	2'		
ANGLES +/-			
FOR MATERIALS AND FINISHES SEE NOTES		DRAWING FILE :	
REMOVE SHARP EDGES		ANGLE OF PROJECTION	
DIMENSIONS			
U.S.	INCHES		
METRIC	MM		

Amphenol		
Amphenol East Asia Limited		
TITLE		
D-sub Waterproof, EHD series male Right angle PCB without brackets or boardlocks type		
SIZE	DRAWING NO.	REV.
A4	C L17EHDXXP3X	1
SCALE	NONE	SHEET 1 OF 1