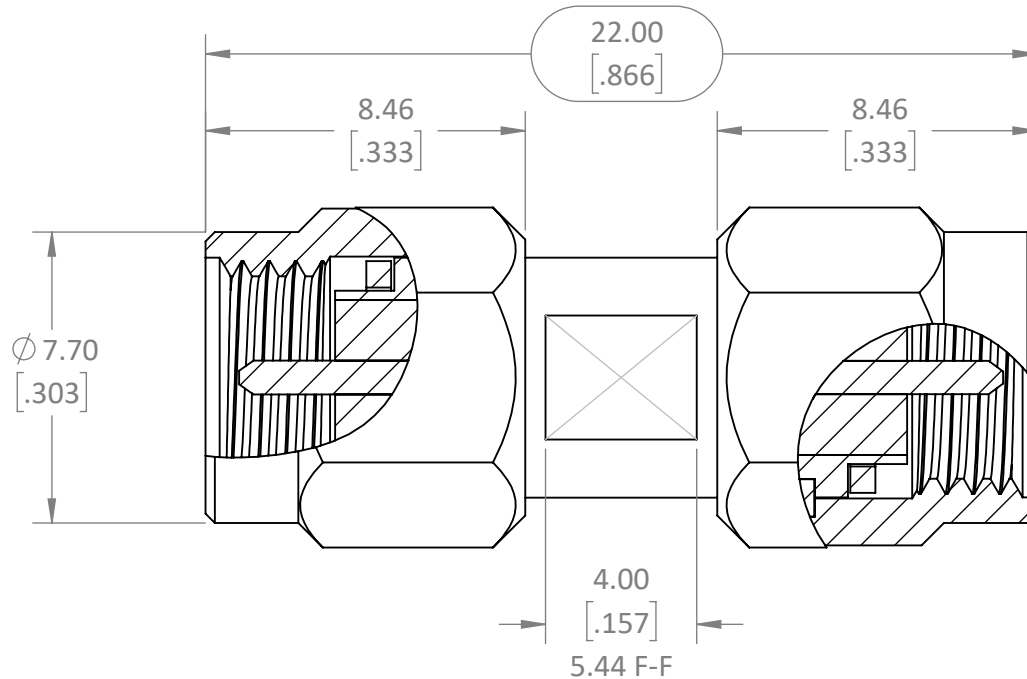


REVISIONS			
REV	DESCRIPTION	DATE	APPV
A	PRODUCTION RELEASE		
B	UPDATED DIMENSIONS, ADDED NEW TITLE BLOCK	10/JUL/12	SAH
C	REDRAWN SOLID MODEL. COMBINED FINISHES TO SINGLE DRAWING ADDED -X	AJVM 6/10/2022	



**NOTES: (UNLESS OTHERWISE SPECIFIED)**

- ALL DIMENSIONS ARE IN MILLIMETERS [IN].
- DIMENSIONS APPLY AFTER FINISHING.
- MANUFACTURE TO BE COMPLIANT WITH EU RoHS DIRECTIVE, USE MATERIALS THAT DO NOT CONTAIN REACH SUBSTANCES OF VERY HIGH CONCERN >1000ppm, AND USE DRC CONFLICT-FREE SOURCED MATERIALS.
- ELECTRICAL PROPERTIES ARE SHOWN FOR INFORMATION ONLY. SEE LINX DATA SHEET FOR COMPLETE ELECTRICAL SPECIFICATIONS.
  - IMPEDANCE: 50Ω
  - FREQUENCY RANGE: 0-4GHz
  - VSWR: 1.3 dBm MAX
- MECHANICAL PROPERTIES
  - INTERFACE IAW MIL-STD-348B
  - OPERATING TEMP: -65° - 165°C
  - DURABILITY: 500 Min.
- UNLISTED DIMENSIONS ARE CONTROLLED BY SOLID MODEL AT LATEST REVISION
- LABEL PACKAGING IAW LINX LABEL DRAWING [MEC-LBL-4x2.5-PAPER-ID]

LINX PART NUMBER	FINISH
ADP-SMAM-SMAM	NICKEL
ADP-SMAM-SMAM-G	GOLD

**WARNING:** THIS DRAWING CONTAINS PROPRIETARY INFORMATION THAT IS THE SOLE PROPERTY OF LINX TECHNOLOGIES, AND SHALL BE TREATED AS SUCH. NO DISCLOSURE OR REPRODUCTION OF THIS DOCUMENT IS PERMITTED, IN WHOLE OR IN PART, WITHOUT THE EXPRESS WRITTEN PERMISSION OF LINX TECHNOLOGIES OR ITS DESIGNATED AGENTS.

MATERIAL:	BRASS PTFE, Si, PhBnz	FINISH:	VAR
INTERPRET DIMENSIONS AND TOLERANCES PER ASME Y14.5.	.X ±2.0 .XX ±1.00 .XXX ±.500	ANGLES: ±1° SURFACE: √	PROJECTION: 
DRAWN: B.MURPHY	DT: 7/10/12	ENGR: SHAWN H	DT: 7/10/12

**STE** connectivity  
159 ORT LANE  
MERLIN, OR 97532

TITLE: <b>SMA MALE TO SMA MALE ADAPTOR TABULATED</b>		
SIZE	DWG. NO.	REV
<b>A</b>	<b>C-ADP-SMAM-SMAM-X</b>	<b>C</b>
SCALE: 5:1	DO NOT SCALE DRAWING	SHEET 1 OF 1