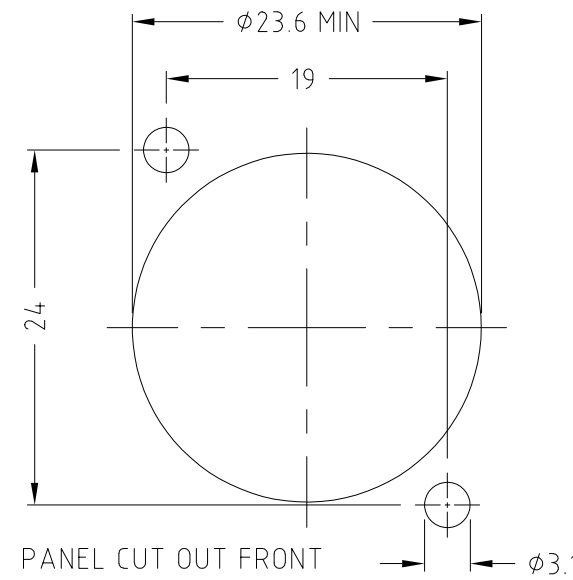
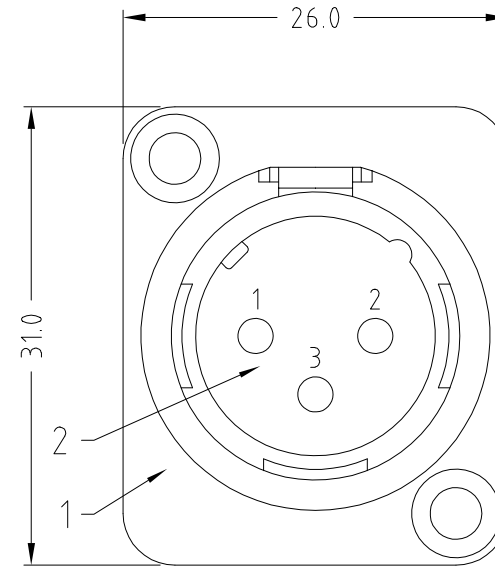
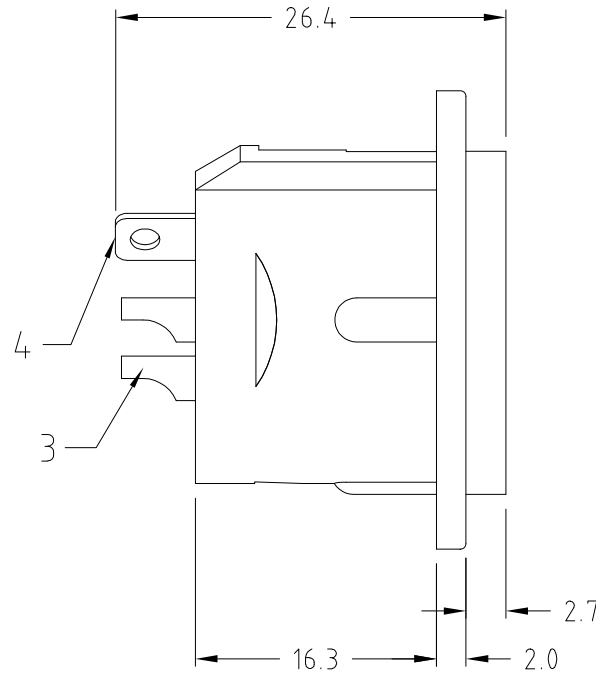
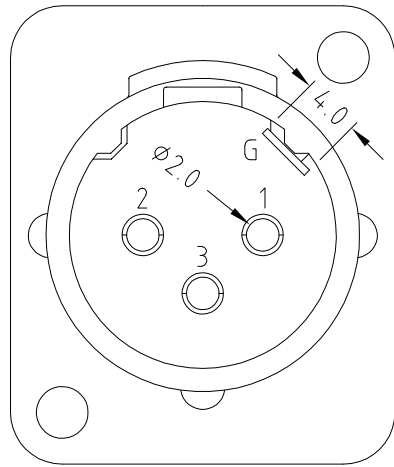


ISS.	AMEND	DATE
1	ISSUED	27/09/18
2	AMEND MATERIAL	16/11/18



NOTE

Contact Resistance: $\approx 7m\Omega$
 Insulation Resistance: $\approx 5000M\Omega$
 Withstand Voltage: 1400V
 Durability (Mating / Unmating): ≈ 2000
 Insertion and Extraction Force: 10-80N

ITEM	DESCRIPTION	MATERIAL	FINISH
1	FRAME	ZINC ALLOY	BLACK NICKEL
2	INSERT	PBT	BLACK
3	CONTACT (3x)	BRASS	GOLD PLATE
4	GROUND	BRASS	SILVER PLATE

RoHS COMPLIANT
TOLERANCE NO DEC. PLACE \pm 1 DEC. PLACE \pm 2 DEC. PLACE \pm HOLE $\varnothing \pm$ ANGLES \pm UNLESS OTHERWISE STATED
DO NOT SCALE

Cliff Electronic Components Ltd.

76 Holmethorpe Avenue, Holmethorpe Industrial Estate,
 Redhill, Surrey, RH1 2PF, England, UK
 Tel: 01737-771375 Fax: 01737-766012 Website: www.cliffuk.co.uk

DIMENSIONS IN MILLIMETERS UNLESS OTHERWISE STATED. WORK TO DIMENSIONS. REMOVE ALL BURRS. IF IN DOUBT ASK.

3rd ANGLE PROJECTION:

MATERIAL: SEE TABLE

FINISH: BLACK - SEE TABLE

DRAWN: T.J.O.

APPROVED: D.P.J.

TITLE: XLR SKT MALE 3DCM/BM (BLACK)

DRWG. No. **FC61905**

FORM: A4DRWGH