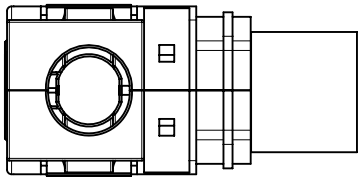
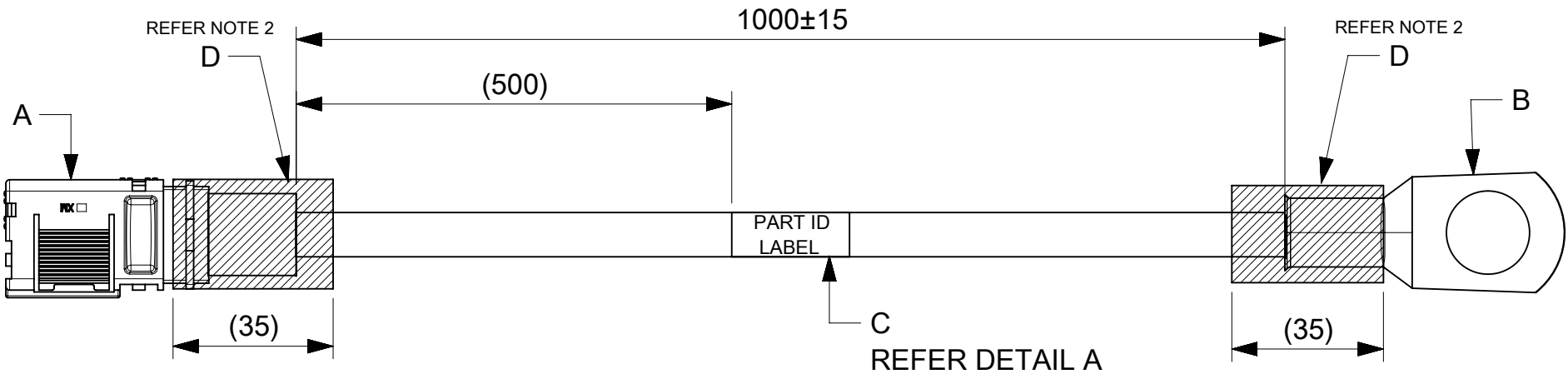


6		5		4		3		2		1	
ITEM #	MOLEX PART#	DESCRIPTION		QTY	UOM	FROM	TO	CABLE PART#	DESCRIPTION		COLOR
A	2169400001	8mm SIDEWIZE ASSY 1/0 AWG RECEPT RED		1	PC	A	B	-	1X1/0AWG DISC SR RD UL3132		RED
B	192210393	BCL-1012 BATTERY CABLE LUG SPM		1	PC						
C	-	PART ID LABEL		1	PC						
D	-	HST		A/R	M						



NOTE 4



REFER NOTE 3

DETAIL A  
2244115216  
MOLEX  
BATCH WK/YR

- NOTE:
1. CABLE ASSEMBLY TO BE ENSURED FOR CONTINUITY.
  2. INSTALL HST ON THE BARREL AS SHOWN IN DRAWING.
  3. ENSURE LATCH AND THE CRIMPING PROFILE ARE IN THE SAME PLANE
  4. HST TO BE COVERED FROM THE WIRE INSULATION TO OVER THE RIB, TO ENSURE THERE IS NO EXPOSURE OF BARE MATERIAL

FUNCTIONAL SYMBOLS	THIS DRAWING CONTAINS INFORMATION THAT IS PROPRIETARY TO MOLEX ELECTRONIC TECHNOLOGIES, LLC AND SHOULD NOT BE USED WITHOUT WRITTEN PERMISSION	
	DIMENSION UNITS	SCALE
	mm	NTS
	GENERAL TOLERANCES (UNLESS SPECIFIED)	
DIVISIONAL SYMBOLS	ANGULAR TOL	± °
	4 PLACES	±
	3 PLACES	±
	2 PLACES	±
DIVISIONAL SYMBOLS	1 PLACE	±
	0 PLACES	±
DIVISIONAL SYMBOLS	DRAFT WHERE APPLICABLE MUST REMAIN WITHIN DIMENSIONS	THIRD ANGLE PROJECTION
	DRAWING	SERIES
	A4-SIZE	224411
	MATERIAL NUMBER	CUSTOMER
2244115216		GENERAL MARKET
SHEET NUMBER		1 OF 1

DOCUMENT STATUS	P1	RELEASE DATE	2023/09/07	06:24:54
-----------------	----	--------------	------------	----------