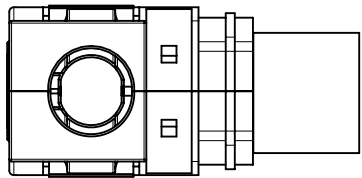
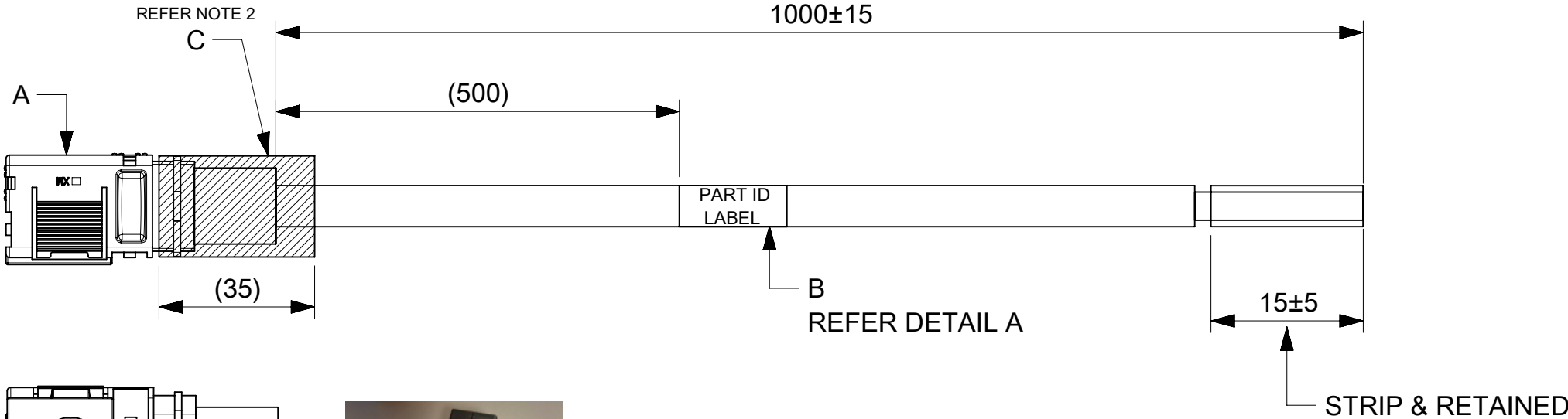


ITEM #	MOLEX PART#	DESCRIPTION	QTY	UOM
A	2169400001	8mm SIDEWIZE ASSY 1/0 AWG RECEPT RED	1	PC
B	-	PART ID LABEL	1	PC
C	-	HST	A/R	M

FROM	TO	CABLE PART#	DESCRIPTION	COLOR
A	-	-	1X1/0AWG DISC SR RD UL3132	RED



REFER NOTE 4

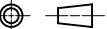


REFER NOTE 3

DETAIL A

2244132216
MOLEX
BATCH WK/YR

- NOTE:
- CABLE ASSEMBLY TO BE ENSURED FOR CONTINUITY.
 - INSTALL HST ON THE BARREL AS SHOWN IN DRAWING.
 - ENSURE LATCH AND THE CRIMPING PROFILE ARE IN THE SAME PLANE.
 - HST TO BE COVERED FROM THE WIRE INSULATION TO OVER THE RIB, TO ENSURE THERE IS NO EXPOSURE OF BARE MATERIAL.

FUNCTIONAL SYMBOLS	THIS DRAWING CONTAINS INFORMATION THAT IS PROPRIETARY TO MOLEX ELECTRONIC TECHNOLOGIES, LLC AND SHOULD NOT BE USED WITHOUT WRITTEN PERMISSION											
<div><div><div><div><div></div></div></div><div><div></div></div></div><div>= 0</div></div> <div><div><div><div><div></div></div></div><div><div></div></div></div><div>= 0</div></div> <div><div><div><div><div></div></div></div><div><div></div></div></div><div>= 0</div></div>	DIMENSION UNITS		SCALE	CURRENT REV DESC:				molex				
	mm		NTS	EC NO: 761416 DRWN: ROHITJ3 CHK'D: SKUMAR07 APPR: SKUMAR07 2023/08/21 2023/09/07 2023/09/07				SW1 8.00MM R-S 1M 1/0AWG RD				
	GENERAL TOLERANCES (UNLESS SPECIFIED)											
	ANGULAR TOL ± °							PRODUCT CUSTOMER DRAWING				
	DIVISIONAL SYMBOLS	4 PLACES		±	INITIAL REVISION:				DOCUMENT NUMBER		DOC TYPE	DOC PART
3 PLACES		±	DRWN: MARUTG				2244132216		PSD	000	D	
2 PLACES		±	APPR: SKUMAR07									
1 PLACE		±	2023/04/26									
0 PLACES		±	2023/04/27									
DRAFT WHERE APPLICABLE MUST REMAIN WITHIN DIMENSIONS			THIRD ANGLE PROJECTION	DRAWING	SERIES	MATERIAL NUMBER		CUSTOMER		SHEET NUMBER		
				A4-SIZE	224413	2244132216		GENERAL MARKET		1 OF 1		

DOCUMENT STATUS	P1	RELEASE DATE	2023/09/07	06:24:56
-----------------	----	--------------	------------	----------