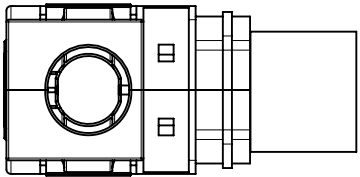
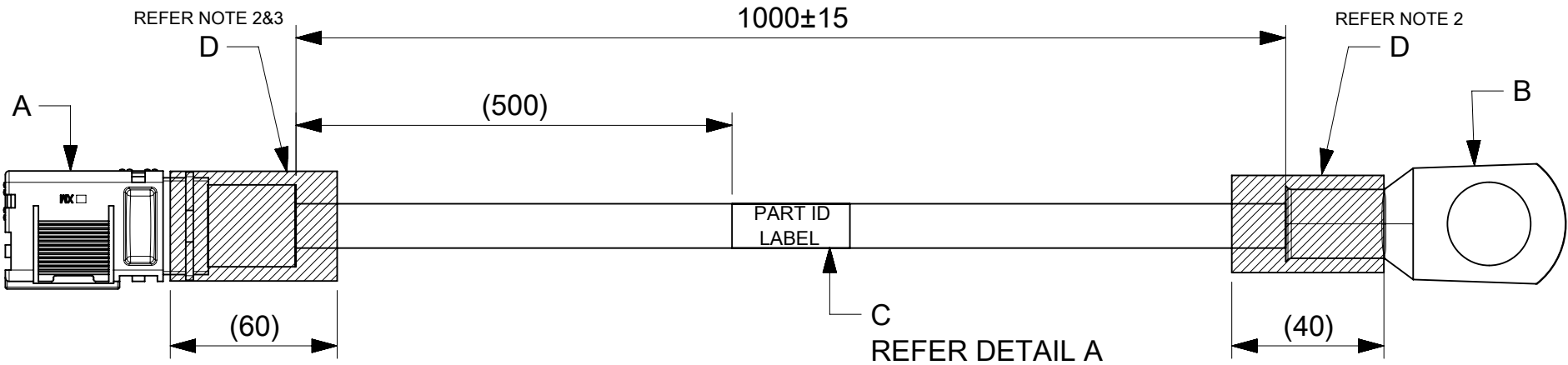


6		5		4	
ITEM #	MOLEX PART#	DESCRIPTION		QTY	UOM
A	2182311000	11mm SIDEWIZE ASSY 4/0 AWG RECEPT BLK		1	PC
B	192210403	BATTERY CABLE LUG (BCL-4012) SPM		1	PC
C	-	PART ID LABEL		1	PC
D	-	HST		A/R	M

3		2		1	
FROM	TO	CABLE PART#	DESCRIPTION		COLOR
A	B	-	1X4/0 AWG DISC PVC BK UL1015		BLACK



REFER NOTE 4



REFER NOTE 3

2244145116
MOLEX
BATCH WK/YR

DETAIL A

- NOTE:
- CABLE ASSEMBLY TO BE ENSURED FOR CONTINUITY.
 - INSTALL HST ON THE BARREL AS SHOWN IN DRAWING.
 - ENSURE LATCH AND THE CRIMPING PROFILE ARE IN THE SAME PLANE.
 - HST TO BE COVERED FROM THE WIRE INSULATION TO OVER THE RIB, TO ENSURE THERE IS NO EXPOSURE OF BARE MATERIAL.

FUNCTIONAL SYMBOLS	THIS DRAWING CONTAINS INFORMATION THAT IS PROPRIETARY TO MOLEX ELECTRONIC TECHNOLOGIES, LLC AND SHOULD NOT BE USED WITHOUT WRITTEN PERMISSION	
	DIMENSION UNITS	SCALE
	mm	NTS
	GENERAL TOLERANCES (UNLESS SPECIFIED)	
DIVISIONAL SYMBOLS	ANGULAR TOL	± °
	4 PLACES	±
	3 PLACES	±
	2 PLACES	±
DIVISIONAL SYMBOLS	1 PLACE	±
	0 PLACES	±
DIVISIONAL SYMBOLS	DRAFT WHERE APPLICABLE MUST REMAIN WITHIN DIMENSIONS	THIRD ANGLE PROJECTION
	DRAWING	SERIES
	A4-SIZE	224414
	MATERIAL NUMBER	CUSTOMER
2244145116		GENERAL MARKET
DOCUMENT NUMBER		DOC TYPE
2244145116		PSD
DOC PART		REVISION
000		C
SHEET NUMBER		1 OF 1

DOCUMENT STATUS	P1	RELEASE DATE	2023/08/21	05:53:16
-----------------	----	--------------	------------	----------