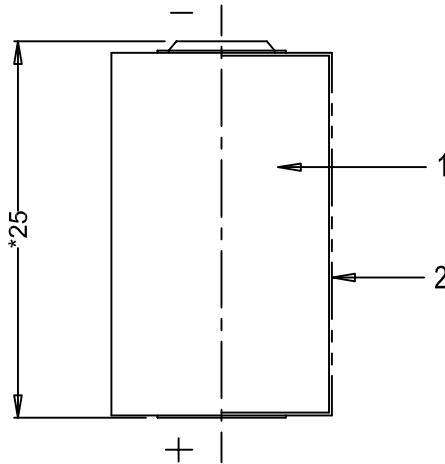
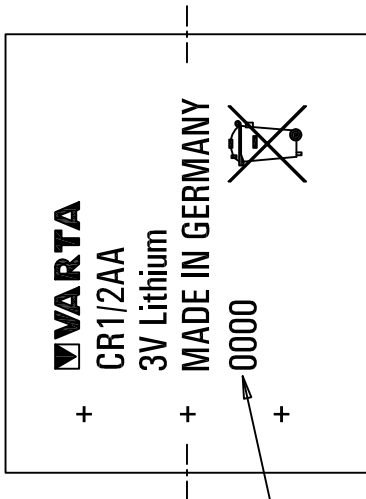
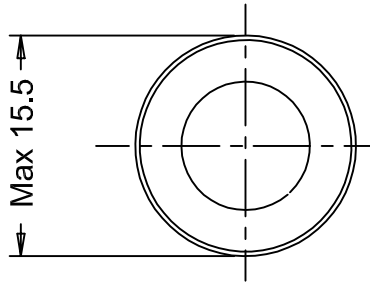
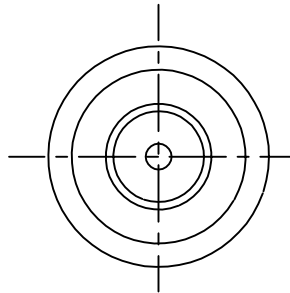


This is controlled document.
 Hardcopy to be endorsed by authorized person.
 Check with Issuing Officer or SAP system for latest update.



Monthly date code
 eg. March 2008 = "0308"



Note : 1) *Dimensions for reference only.
 2) Use UL approved green shrink sleeve

| No | AO No | Revisions | Date | Name |
|----|---------|---|------------|-------|
| 2 | R106/08 | To add in printed sleeve the crossed-out wheeled bin symbol | 2008-04-16 | Ratna |
| 1 | T39/01 | Change cell height as ref. dimension | 2001-05-30 | Atna |

| | | | | | | |
|--------------------------------|--|---|--|--|--|------------------------|
| Projection: | | Material: Refer to part list no: 071850 | | Description: CR 1/2 AA battery with shrink sleeve | | |
| Dimensions in mm | | Prepared & Checked 1999-09-09 Tatang | | Verified & Approved | | Dwg. No: 071850 |
| Tolerance: As specified | | | | VKB Order No: 06127 101 301 | | 402 |
| Scale: 2 : 1 | | | | | | |

Rights reserved to make technical changes, as a result of further development, without notice. This drawing is the property of VARTA Microbattery and must not be copied or disclosed to a third party without the written consent of VARTA Microbattery.

