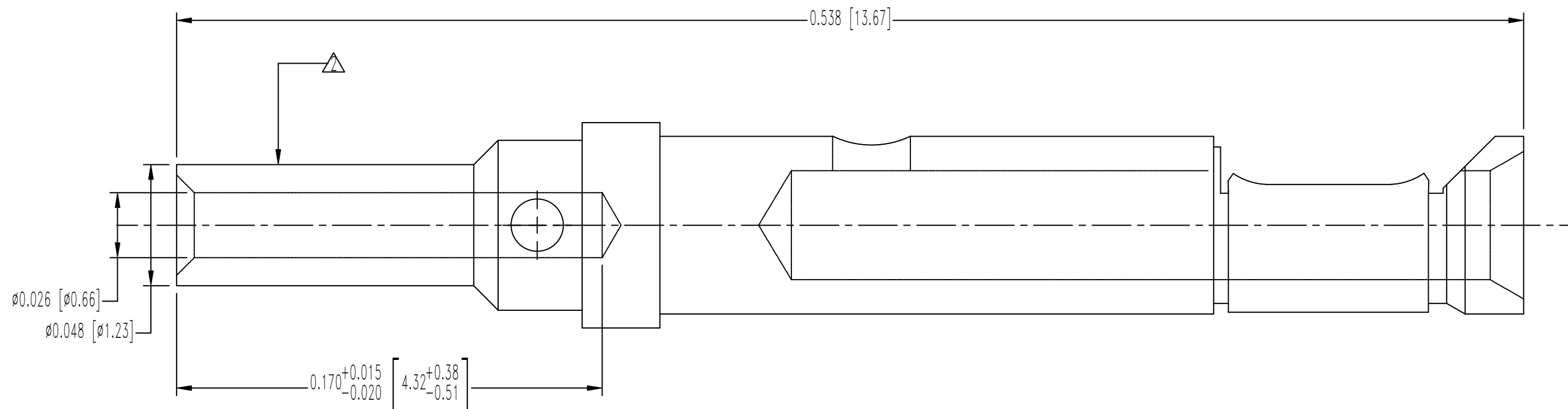


SK15793

THIS DRAWING CONTAINS INFORMATION  
PROPRIETARY TO POSITRONIC IND. INC.  
ANY REPRODUCTION, DISCLOSURE OR  
USE OF THIS DRAWING IS EXPRESSLY  
PROHIBITED, EXCEPT AS POSITRONIC IND.  
INC. MAY OTHERWISE AGREE IN WRITING.

DATE	REV	REVISION RECORD	APP	DR	CK
1-15 14	NC	ECO 41964	TK	BS	COLE
10-30 15	A	ECO 48515	COLE	CV	COLE
11-25 15	B	ECO 48892	COLE	CV	COLE



NOTES:

1. MATERIALS:

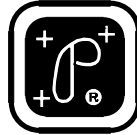

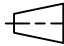
CONTACT: COPPER ALLOY, 0.000015 [0.37 $\mu$ ] GOLD PLATE.

SPRING CLIP: BERYLLIUM COPPER, 0.000010 [0.25 $\mu$ ] GOLD OVER COPPER.

 CONTACT PERMANENTLY MARKED WITH RED ID BAND.

3. CONTACTS ARE ROHS COMPLIANT PER CURRENT DIRECTIVE.

4. DIMENSIONS ARE IN INCHES [MILLIMETERS].

		POSITRONIC INDUSTRIES INC.	
SPRINGFIELD, MISSOURI		65801	
		SCALE	DRAWN BY B SHELEDY
DECIMAL TOL.	DD SERIES	N.T.S.	APPROVED BY TK
$\pm 0.015$ [0.38]	TITLE		
	FC6026D2CU/AA		
ANGULAR TOL.	DATE	DRAWING NUMBER	REV.
$\pm 5^\circ$	1-14-14	SK15793	B