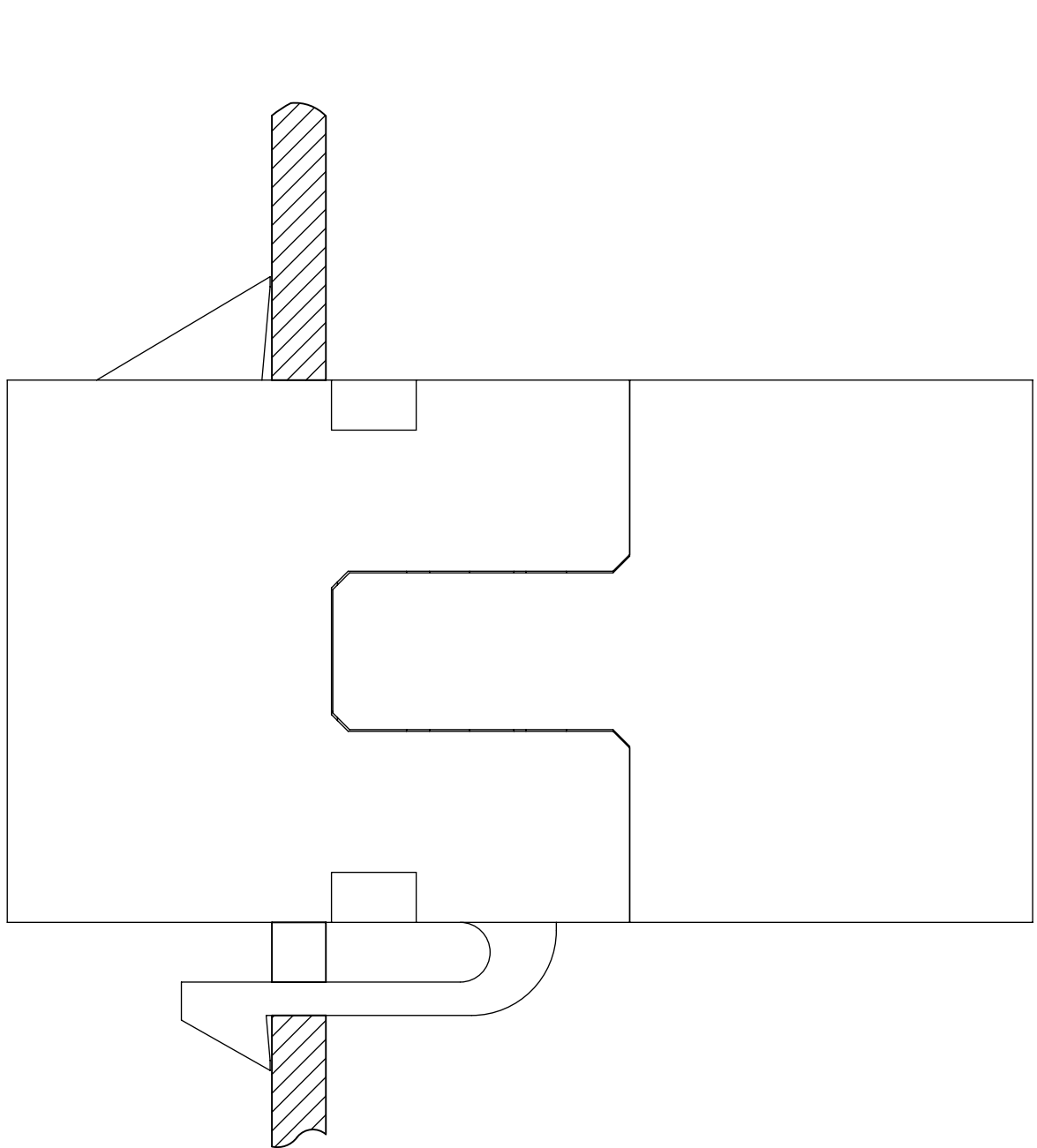


- NOTES:
- MATERIAL:  
HOUSING: PC, UL 94V-0. COLOUR BLACK  
TERMINAL: PHOSPHOR BRONZE 0.35MM THICK.  
INSULATOR: ABS, UL 94V-0. COLOUR BLACK
  - FINISH  
TERMINALS:  
PLATED WITH 1.27 MICROMETERS MIN GOLD,  
WITH OVERALL NICKEL UNDERPLATE: 1.27 MICROMETERS MIN.
  - PRODUCT SPECIFICATION: 2244610001 PS
  - PACKAGING SPECIFICATION: 2244610001 PK
  - MATES WITH: IEC 60603-7 COMPLIANT PLUGS
  - COSMETIC SPECIFICATION: ES-46030-006  
ALL SURFACES CLASS B, EXCEPT AS NOTED
  - ENVIRONMENTAL COMPLIANCE INFORMATION CAN BE FOUND IN WWW.MOLEX.COM

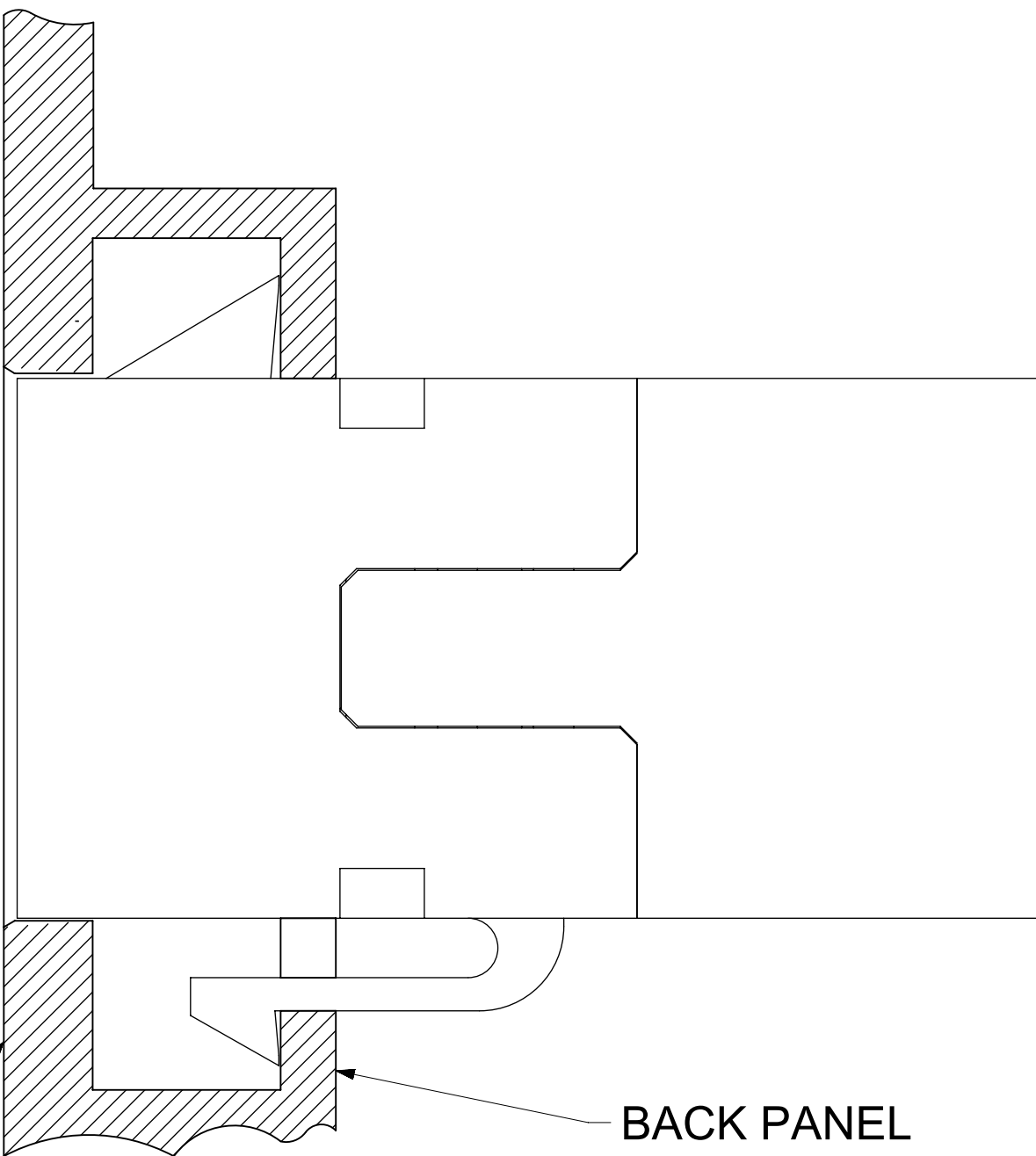
DOCUMENT STATUS	P1	RELEASE DATE	2023/06/06	13:03:55
-----------------	----	--------------	------------	----------

THIS DRAWING CONTAINS INFORMATION THAT IS PROPRIETARY TO MOLEX ELECTRONIC TECHNOLOGIES, LLC AND SHOULD NOT BE USED WITHOUT WRITTEN PERMISSION															
FUNCTIONAL SYMBOLS	DIMENSION UNITS		SCALE		CURRENT REV DESC: INITIAL RELEASE				<div>molex</div>						
	mm		2.5:1												
DIVISIONAL SYMBOLS	GENERAL TOLERANCES (UNLESS SPECIFIED)				EC NO: 751212				COUPLER MODULAR JACK, LOW PROFILE						
	ANGULAR TOL ± 0.5 °														
	4 PLACES		±		DRWN: FAYEW 2023/04/20										
	3 PLACES		±		CHK'D: KLANG 2023/06/06										
	2 PLACES		±		APPR: KLANG 2023/06/06										
	1 PLACE		±		INITIAL REVISION:										
	0 PLACES		±												
DRAFT WHERE APPLICABLE MUST REMAIN WITHIN DIMENSIONS				THIRD ANGLE PROJECTION		DRAWING		SERIES		MATERIAL NUMBER		CUSTOMER		SHEET NUMBER	
						A3-SIZE		224461		2244610001				1 OF 2	

ALL DIMENSIONS ARE FOR REFERENCE



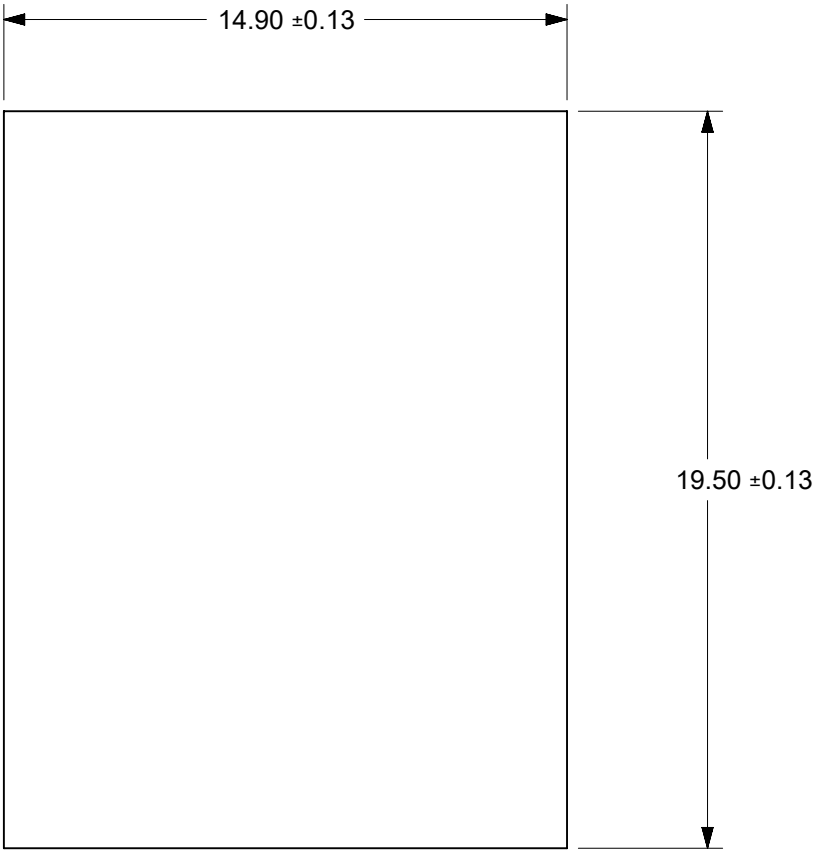
SINGLE WALL PLATE



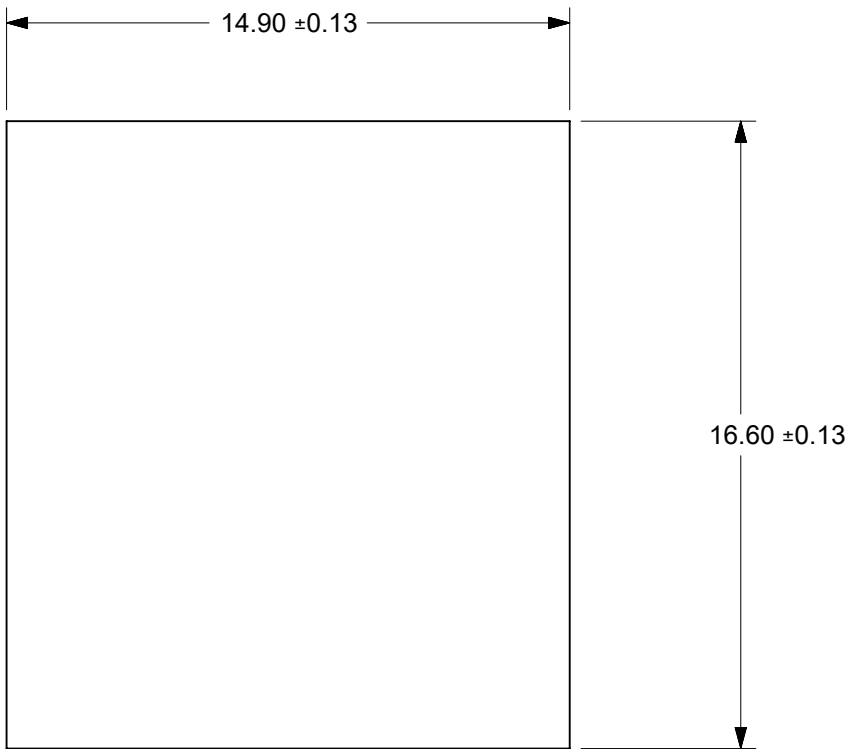
FRONT PANEL

BACK PANEL

DOUBLE WALL PLATE



RECOMMENDED PANEL OPENING  
FOR SINGLE WALL PLATE  
AND BACK PANEL FOR  
DOUBLE WALL PLATE



RECOMMENDED FRONT PANEL  
OPENING FOR DOUBLE WALL PLATE

FUNCTIONAL SYMBOLS	THIS DRAWING CONTAINS INFORMATION THAT IS PROPRIETARY TO MOLEX ELECTRONIC TECHNOLOGIES, LLC AND SHOULD NOT BE USED WITHOUT WRITTEN PERMISSION																	
<div><div><div><div></div><div>A</div></div><div>= 0</div></div><div><div><div><div></div><div>E</div></div><div>= 0</div></div><div><div><div><div></div><div>P</div></div><div>= 0</div></div></div></div></div>	DIMENSION UNITS		SCALE		CURRENT REV DESC: INITIAL RELEASE				<div>molex</div> <div>COUPLER MODULAR JACK, LOW PROFILE</div>									
	mm		5:1															
	GENERAL TOLERANCES (UNLESS SPECIFIED)																	
DIVISIONAL SYMBOLS	ANGULAR TOL ± 0.5 °				EC NO: 751212				PRODUCT CUSTOMER DRAWING									
	4 PLACES		±		DRWN: FAYEW 2023/04/20													
	3 PLACES		±		CHK'D: KLANG 2023/06/06													
	2 PLACES		±		APPR: KLANG 2023/06/06													
	INITIAL REVISION:				DOCUMENT NUMBER 2244610001				DOC TYPE PSD		DOC PART 000		REVISION A					
	1 PLACE		±												DRWN: FAYEW 2022/12/16			
	0 PLACES		±												APPR: KLANG 2023/06/06			
DRAFT WHERE APPLICABLE MUST REMAIN WITHIN DIMENSIONS				THIRD ANGLE PROJECTION		DRAWING C-SIZE		SERIES 224461		MATERIAL NUMBER		CUSTOMER		SHEET NUMBER 2 OF 2				