

ORDERING CODE: **MRK-DRL8-A12-000**

**SERIES**

**LOCK MECHANISM**  
D=LATCH LOCK

**CONFIGURATION**  
R=RECEPTACLE

**NUMBER OF CONTACTS**  
L8=8P8C

**SPECIALS**  
0=STANDARD

**CABLE LENGTH**  
00=NO CABLE

**MOUNTING/COVER OPTIONS**  
2= PANEL MOUNT WITH DUST COVER

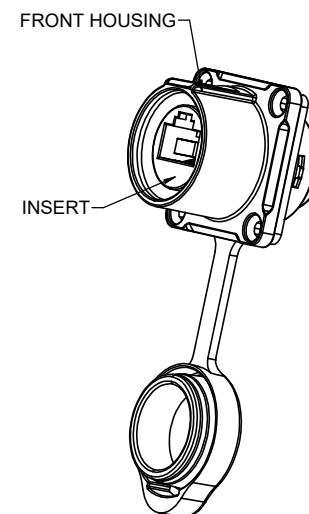
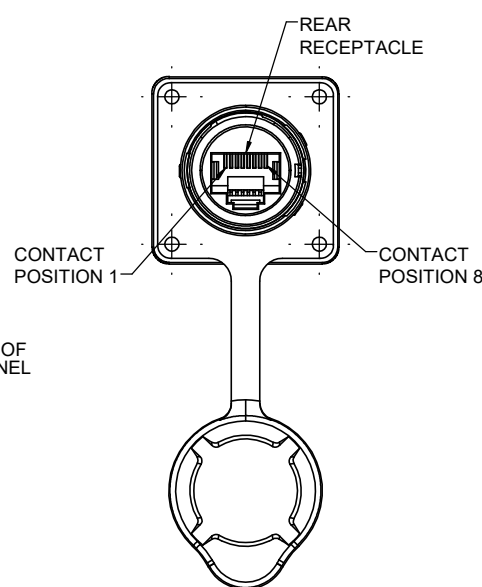
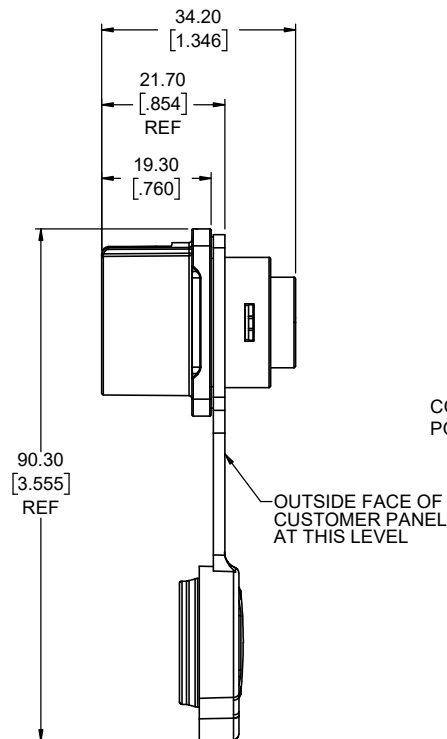
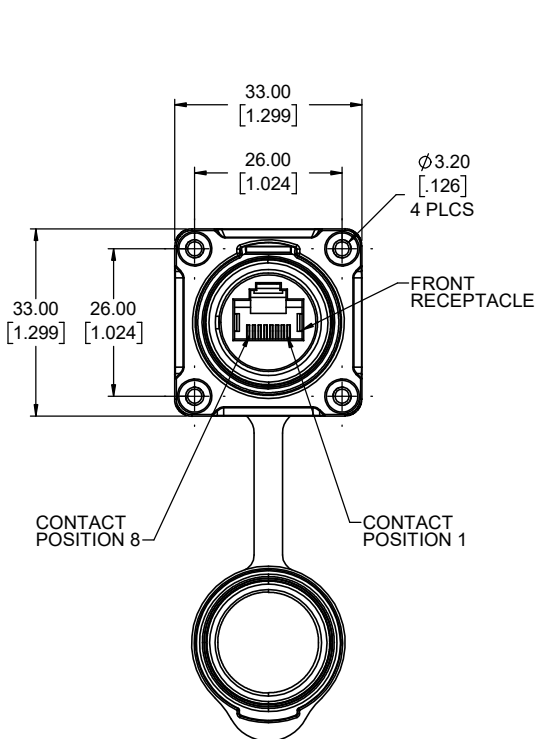
**TERMINATION TYPE**  
A1=RECEPTACLE TO RECEPTACLE ADAPTER



**NOTES:**

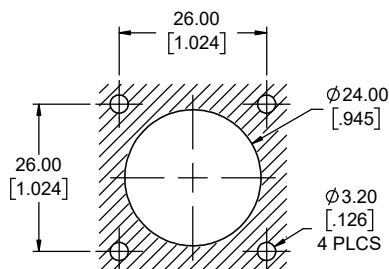
- ALL MATERIALS TO BE RoHS COMPLIANT PER EU DIRECTIVE 2011/65/EU AND AMENDMENTS.
  - FRONT HOUSING: ZINC ALLOY PLATED WITH CHROME
  - INSERT: THERMOPLASTIC, UL FLAMMABILITY RATING 94V-0, BLACK
  - COVER: SILICONE RUBBER
  - RJ45 CONTACT: COPPER ALLOY PLATED WITH GOLD OVER NICKEL
  - SCREW & HEX NUT: STAINLESS STEEL
- ELECTRICAL CHARACTERISTICS:
  - CURRENT RATING: 1.5A
  - OPERATING VOLTAGE: 125VAC
  - DIELECTRIC WITHSTANDING VOLTAGE: 1000V AC
  - CONTACT RESISTANCE: 30mΩ MAXIMUM
- RECOMMENDED PANEL THICKNESS: 2.5 (.098) TO 4.0 (.157)
- ENVIRONMENTAL PROTECTION: IP67 PER IEC 60529 IN MATED CONDITION
- SCREWS & HEX NUT PREPARED IN SEPARATE PACKAGE.
- METAL LATCH LOCK RECEPTACLE MATES WITH AMPHENOL MRK SERIES PLUGS MRK-DP00-XXX-XXX

| REVISIONS |                             |          |       |
|-----------|-----------------------------|----------|-------|
| REV       | DESCRIPTION, ECN, EAR NO.   | DATE     | APP'D |
| A         | PRODUCT DRAWING (EAR 15387) | DEC23/23 | K.L.  |

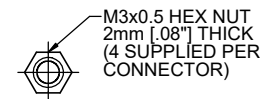
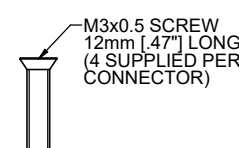


**FRONT RECEPTACLE TO REAR RECEPTACLE CONNECTION CHART**

| FRONT RECEPTACLE POSITION # | REAR RECEPTACLE POSITION # |
|-----------------------------|----------------------------|
| 1                           | 1                          |
| 2                           | 2                          |
| 3                           | 3                          |
| 4                           | 4                          |
| 5                           | 5                          |
| 6                           | 6                          |
| 7                           | 7                          |
| 8                           | 8                          |
| GROUND                      | GROUND                     |



**RECOMMENDED PANEL HOLE**



|                            |                        |           |          |
|----------------------------|------------------------|-----------|----------|
| UNLESS SPECIFIED OTHERWISE | DRAWN                  | ED.LIU    | NOV22/23 |
| PRIMARY UNITS MILLIMETERS  | CHECKED                | E.QU      | NOV30/23 |
| SECONDARY UNITS INCHES     | M.E. APP'D             |           |          |
| REFERENCE IN PARENTHESES   | Q.A. APP'D             |           |          |
| GENERAL TOLERANCES         | DWG APPR.              | K.LAMBIE  | DEC23/23 |
| 1 DECIMAL PLACE            | ENG. REL. NO.          | EAR 15387 |          |
| 2 DECIMAL PLACES           | REF.                   |           |          |
| 3 DECIMAL PLACES           | THIRD ANGLE PROJECTION |           |          |
| ANGULAR DEGREES            | DO NOT SCALE DRAWING   |           |          |

|  |  |  |  |
|--|--|--|--|
| <b>Amphenol Canada Corp.</b><br>Commercial Products  |  |  |  |
| MRK SERIES ROUND MODULAR JACK, RECEPTACLE WITH LATCH LOCK, PANEL MOUNT RECEPTACLE TO RECEPTACLE, IP67 RATING, RoHS COMPLIANT |  |  |  |
| DWG. NO.   |  |  |  |
| P-MRK-DRL8-A12-000   |  |  |  |
| CODE ID NO. 03554 DWG SIZE: X SCALE: 1:1 SHEET 1 OF 1  |  |  |  |
| REV A  |  |  |  |

THIS DOCUMENT CONTAINS PROPRIETARY INFORMATION AND SUCH INFORMATION MAY NOT BE DISCLOSED TO OTHERS FOR ANY PURPOSE OR USED FOR MANUFACTURING PURPOSES WITHOUT WRITTEN PERMISSION FROM AMPHENOL CANADA CORP.