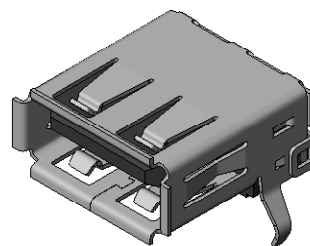


NOTES:

1. Ⓢ REPRESENTS A CRITICAL DIMENSION.
2. COPLANARITY TO BE WITHIN 0.10[.004].
3. PARTS TO BE PACKED IN TRAYS.
4. ALL PARTS ARE ROHS COMPLIANT WITH OR WITHOUT -R.

DESIGNED & DIMENSIONED
IN MILLIMETERS[INCHES]

USBR-A-S-X-X-TH-X



TYPE
-A

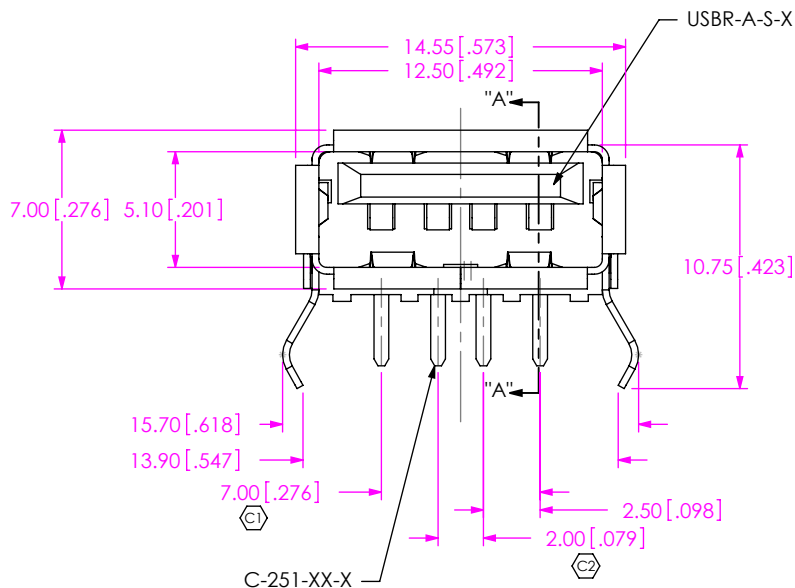
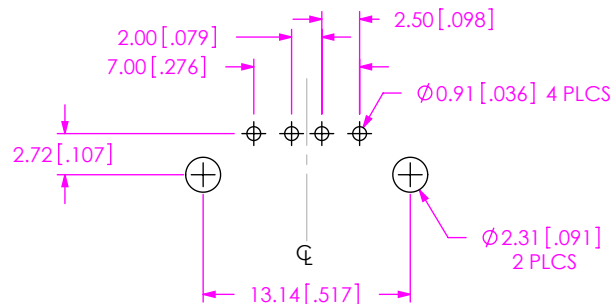
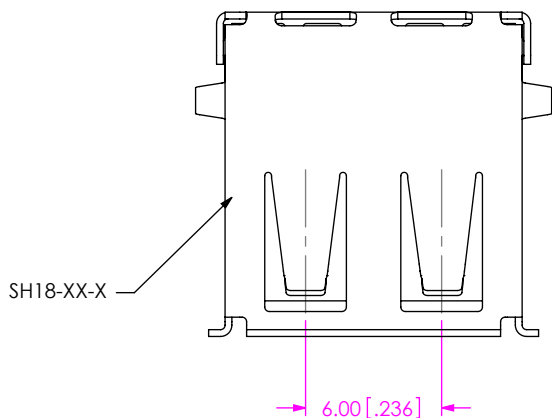
CONFIGURATION
-S:SINGLE

PLATING
-S:SELECTIVE GOLD
.000030" GOLD (CONTACT AREA)
TIN ON TAIL
-F:FLASH GOLD
.000003" MIN GOLD

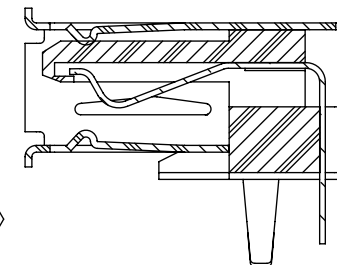
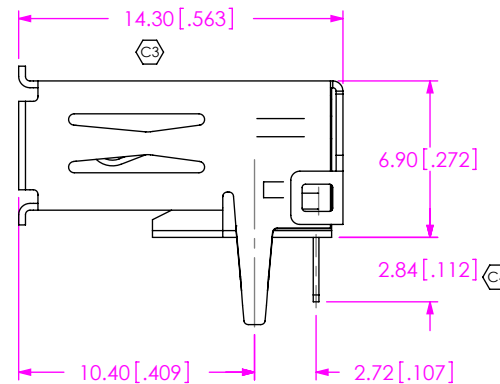
E & I OPTION
-R: ROHS COMPLIANT

TERMINATION
-TH:RIGHT ANGLE OPEN BLACK

COLOR
-O:ORANGE



PCB LAYOUT



SECTION "A"-"A"
SCALE 3 : 1

UNLESS OTHERWISE SPECIFIED,
DIMENSIONS ARE IN MILLIMETERS.
TOLERANCES ARE:
DECIMALS ANGLES
X.X: ±0.3 [.01] 2°
X.XX: ±0.13 [.005]
X.XXX: ±0.051 [.0020]

PROPRIETARY NOTE
THIS DOCUMENT CONTAINS INFORMATION
CONFIDENTIAL AND PROPRIETARY TO
SAMTEC, INC. AND SHALL NOT BE REPRODUCED
OR TRANSFERRED TO OTHER DOCUMENTS OR
DISCLOSED TO OTHERS OR USED FOR ANY
PURPOSE OTHER THAN THAT WHICH IT WAS
OBTAINED WITHOUT THE EXPRESSED WRITTEN
CONSENT OF SAMTEC, INC.

MATERIAL: DO NOT SCALE DRAWING SHEET SCALE: 3:1
INSULATOR: PBT,GALSS FILLED,RATED UL94-V0
CONTACT : PHOS BRONZE
SHELL: BRASS,NICKEL PLATED
CONTACT PLATING: GOLD FLASH OVER NICKEL ON MATING AREA
TIN OVER COPPER UNDER PLATED ON TAILS
MAX FLASH ALLOWED: .05[.002]
MAX GATE VESTIGE: .05[.002]
F:\dwg\MISC\mktg\USB-A-S-X-X-TH-X-MKT.SLDDRW



520 PARK EAST BLVD, NEW ALBANY, IN 47150
PHONE: 812-944-6733 FAX: 812-948-5047
e-Mail: info@SAMTEC.com code: 55322

DESCRIPTION:
USB TYPE A CONNECTOR

DWG. NO. USBR-A-S-X-X-TH-X

BY: STEVEN XU 26/02/2008 SHEET 1 OF 1