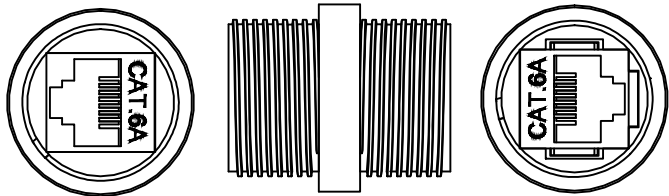
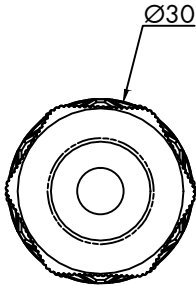
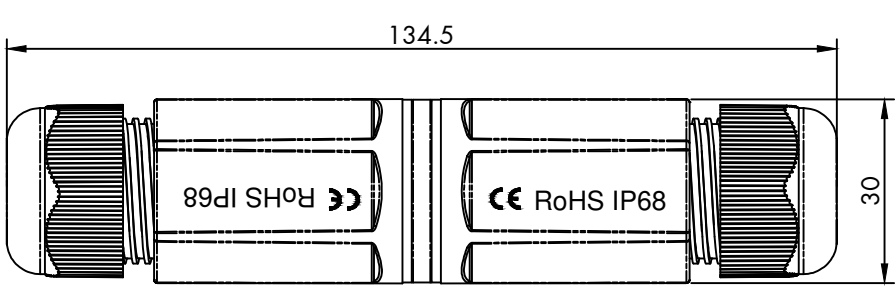
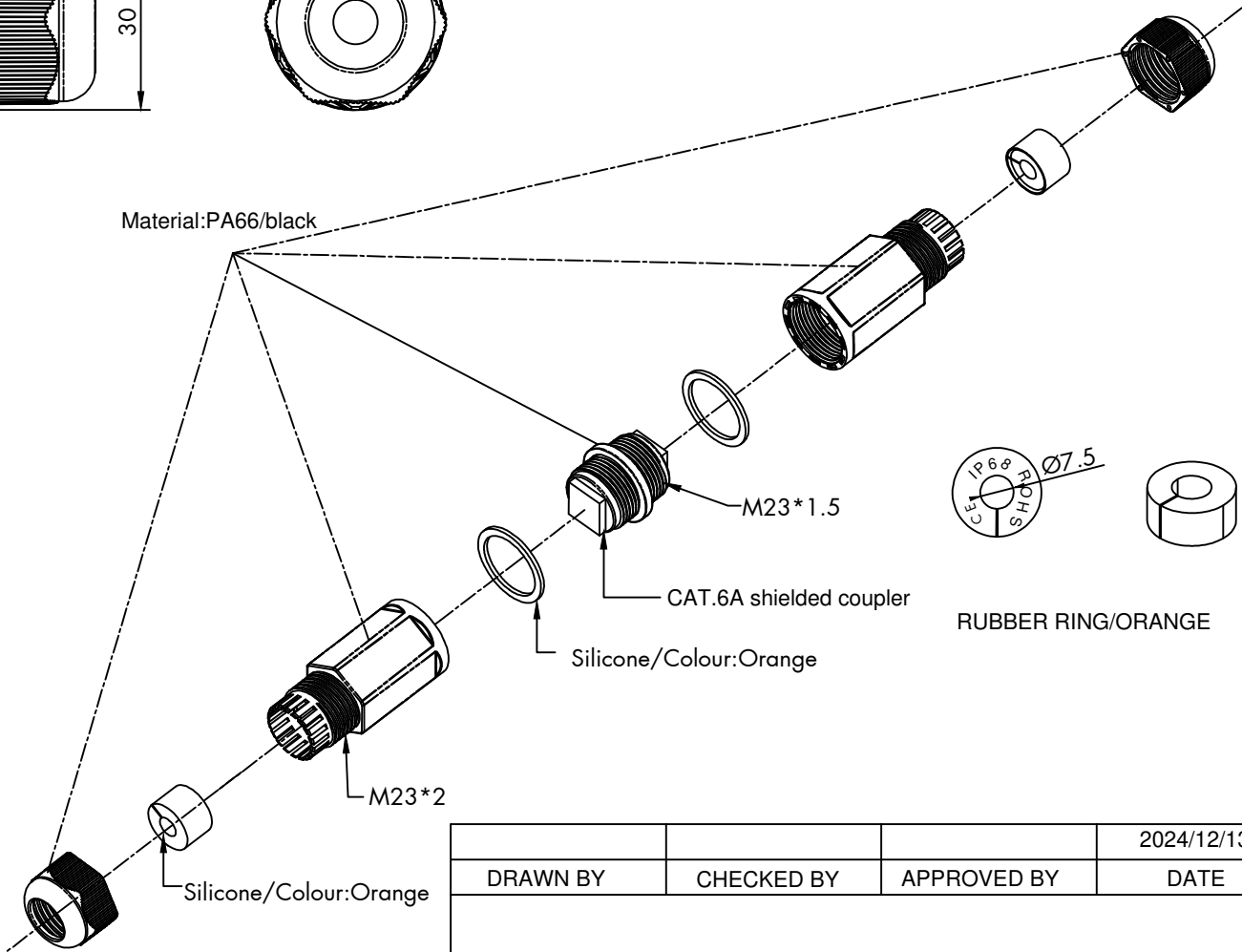


CONFIGURATION DETAILS OF  
UNDIMENSIONED FEATURES  
MAY VARY

REVISIONS			
REV	DESCRIPTION	DATE	APPROVED
A			



Material:PA66/black



Specification:  
Coupler Material:  
1.Shield:BRASS  
2.Plastic Housing:PC  
3.RJ45 contact material& finished:  
3.1 Phospor Bronze with Nickel plated  
3.2 Contact area:Gold plated  
Performace:  
1.Insertion force:20N max.  
2.Retention strength:7.7kgs between jack and plug.  
3.Operation temperature:-20 °C to 68 °C  
4.Durability:  
Jack:750 cycles plug-jack mating and unmating test,  
Insertion cyclest at 20 cycles/minute max.  
Contact resistance test per 100 cycles.  
5.The cat.6A performance is in complince with the ANSI/TIA/EIA 568C standard.  
RoHS2.0 (2011/65/EU) &(2015/863/EU) Compliant

			2024/12/13
DRAWN BY	CHECKED BY	APPROVED BY	DATE
PRODUCT TITLE: Outdoor Connector Cat.6A RJ45 Female/Female,IP68			
CUSTOMER:		ITEM NO.	
		PROJECTION	
		SCALE:NONE	UNITS:mm
			SHEET:1/1